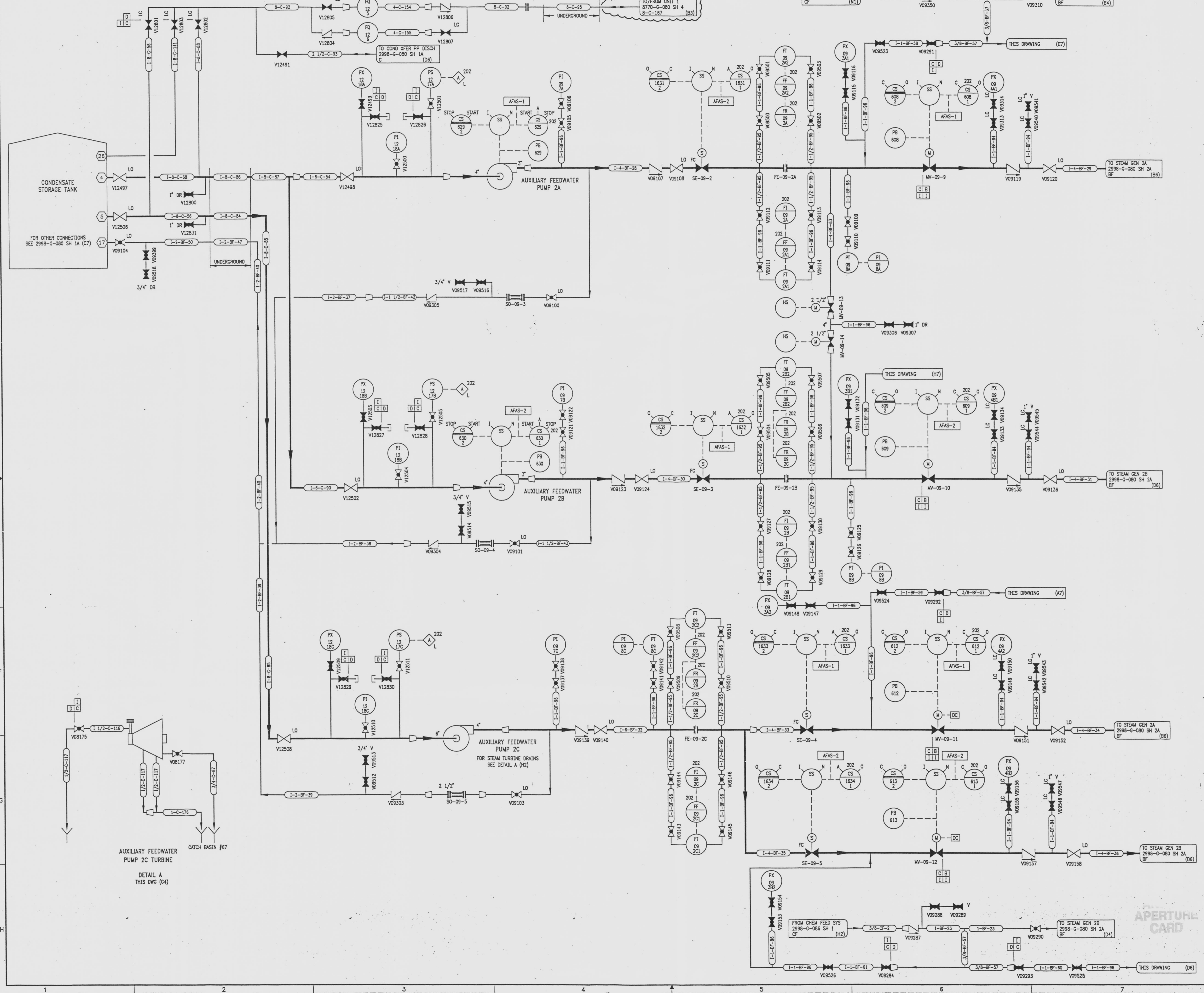


2998-G-080  
SH 2B



DRAWING 1

DRAWING NUMBER  
2998-G-080  
SH 2B

DRAWING NUMBER

NUMBER

| REVISIONS  |         |             |     |          |
|--|---------|-------------|-----|----------|
| NO   | DATE    | DESCRIPTION | BY  | APPROVED |
| 26   | 7/24/95 |             | GM  | JUZ      |
| DCR-SLM-94-02: REDRAWN   |         |             |     |          |
| 27   | 4/2/96  |             | JGW | JUZ      |
| DCR-SLM-96-01: REVISE (G2) VALVE POSITION (V08177)             |         |             |     |          |
| 28   | 10/4/96 |             | GM  | JRH      |
| CSN 86037-6036: ADD (A2,B6,B7,D6,D7,F7,F6,G6,G7) VALVE MODE LC |         |             |     |          |
| 29   | 8/5/97  |             | GM  | JRH      |
| DCR 86022: REV (A4) CONTINUATION                               |         |             |     |          |

REFERENCE DRAWINGS

|                                  |                   |
|----------------------------------|-------------------|
| PIPE, VALVE & INSTRUMENT SYMBOLS | 2998-0-078 SH 100 |
| VALVE LIST                       | 2998-A-051        |
| LINE LIST                        | 2998-B-052        |
| VALVE OPERATIONAL NUMBER INDEX   | 2998-B-057A       |
| INSTRUMENT INSTALLATION DETAILS  | 2998-B-231        |
| INSTRUMENT LIST                  | 2998-B-270C       |

**INFORMATION ONLY**  
VERIFY WITH A CONTROLLED COPY BEFORE USE.

NOTE: THIS DRAWING IS MADE FROM REV. 25 OF DRAWING 2998-G-080 SH 2

REVISION OF THIS DRAWING MAY REQUIRE UPDATE OF THE FOLLOWING DOCUMENT: FSAR FIGURE 10.1-2b

**NUCLEAR SAFETY RELATED IN PART ONLY**

FLORIDA POWER & LIGHT COMPANY  
1983 - 890 MW EXTENSION - UNIT 2  
FLOW DIAGRAM  
FEEDWATER & CONDENSATE SYSTEMS

|                  |          |            |
|------------------|----------|------------|
| SCALE: NONE      | APPROVAL | DATE:      |
| DW: MECH         |          | 2998-G-080 |
| DR: D. CHESTN    |          | SHEET 2B   |
| CH: P. BERGERSON |          | 29         |

9712040015-43