

2998-G-080
SH 2A

REVISIONS

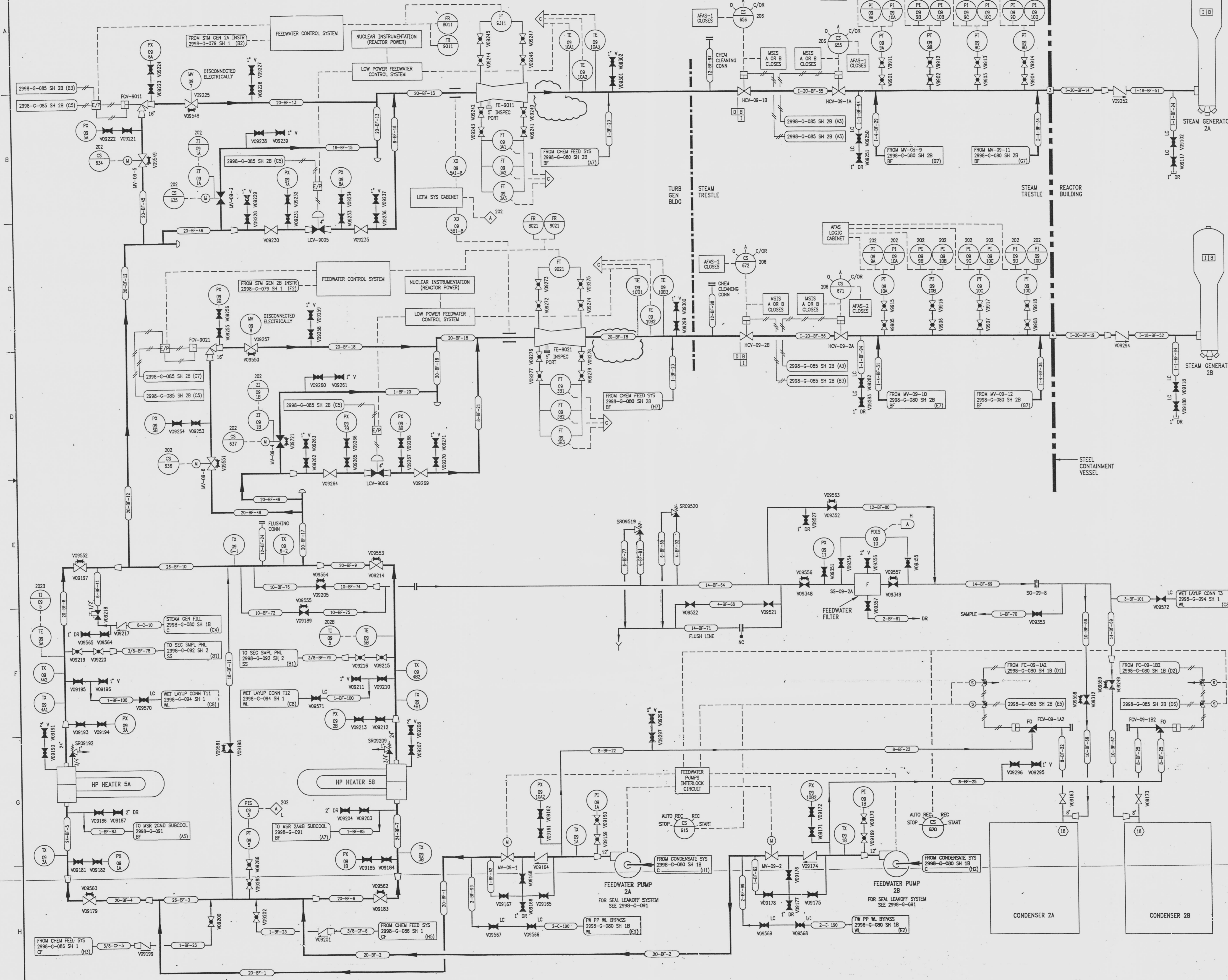
| NO | DATE | DESCRIPTION | BY | CH | APPROVED |
|----|---------|--|-----|----|----------|
| 26 | 7/24/95 | DCR-SL-84-057: REDRAWN | GM | RR | JZ |
| 27 | 1/22/96 | ADD: INSTRUMENTATION AND ALARM (A3-C3) | PAB | HS | JZ |
| 28 | 8/8/96 | DCR 96037-6036: DEL: (F2,E3) LC | GM | HS | JZ |
| 29 | 10/4/96 | DCR 96037-6036: ADD: (B5,B7,D5,D7) VALVE MODE LC | GM | HS | JRH |
| 30 | 5/14/97 | DCR 96147: DEL: (B4 AND D4) INSPECTION PORTS | GM | HS | JZ |

DRAWING NUMBER
2998-G-080
SH 2A

DRAWING NUMBER
2998-G-080
SH 2A

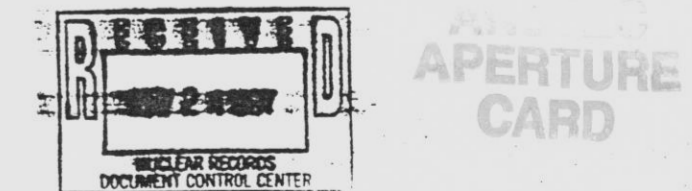
DRAWING NUMBER
2998-G-080
SH 2A

DRAWING NUMBER
2998-G-080
SH 2A



REFERENCE DRAWINGS
PIPE, VALVE & INSTRUMENT SYMBOLS
VALVE LIST
LINE LIST
VALVE OPERATIONAL NUMBER INDEX
INSTRUMENT INSTALLATION DETAILS
INSTRUMENT LIST
FEEDWATER CONTROL SYSTEM

INFORMATION ONLY
VERIFY WITH A CONTROLLED COPY BEFORE USE.



NOTE: THIS DRAWING IS MADE FROM REV. 25 OF DRAWING 2998-G-080 SH 2

REVISION OF THIS DRAWING MAY REQUIRE UPDATE OF THE FOLLOWING DOCUMENT: FSAR FIGURE 10.1-2b

NUCLEAR SAFETY-RELATED IN PART ONLY

FLORIDA POWER & LIGHT COMPANY
ST LUCIE PLANT
1983 - 890 MWe EXTENSION - UNIT 2
FLOW DIAGRAM
FEEDWATER & CONDENSATE SYSTEMS

| | |
|---|-----------------|
| RAYTHEON ENGINEERS & CONSTRUCTORS, INC. | |
| SCALE: NONE | APPROVAL: _____ |
| DATE: 2998-G-080 | DATE: _____ |
| DW: MESH | DR: S. BLATT |
| CH: P. BEVERSON | CH: _____ |
| SHEET 2A | 30 |

971204005-42