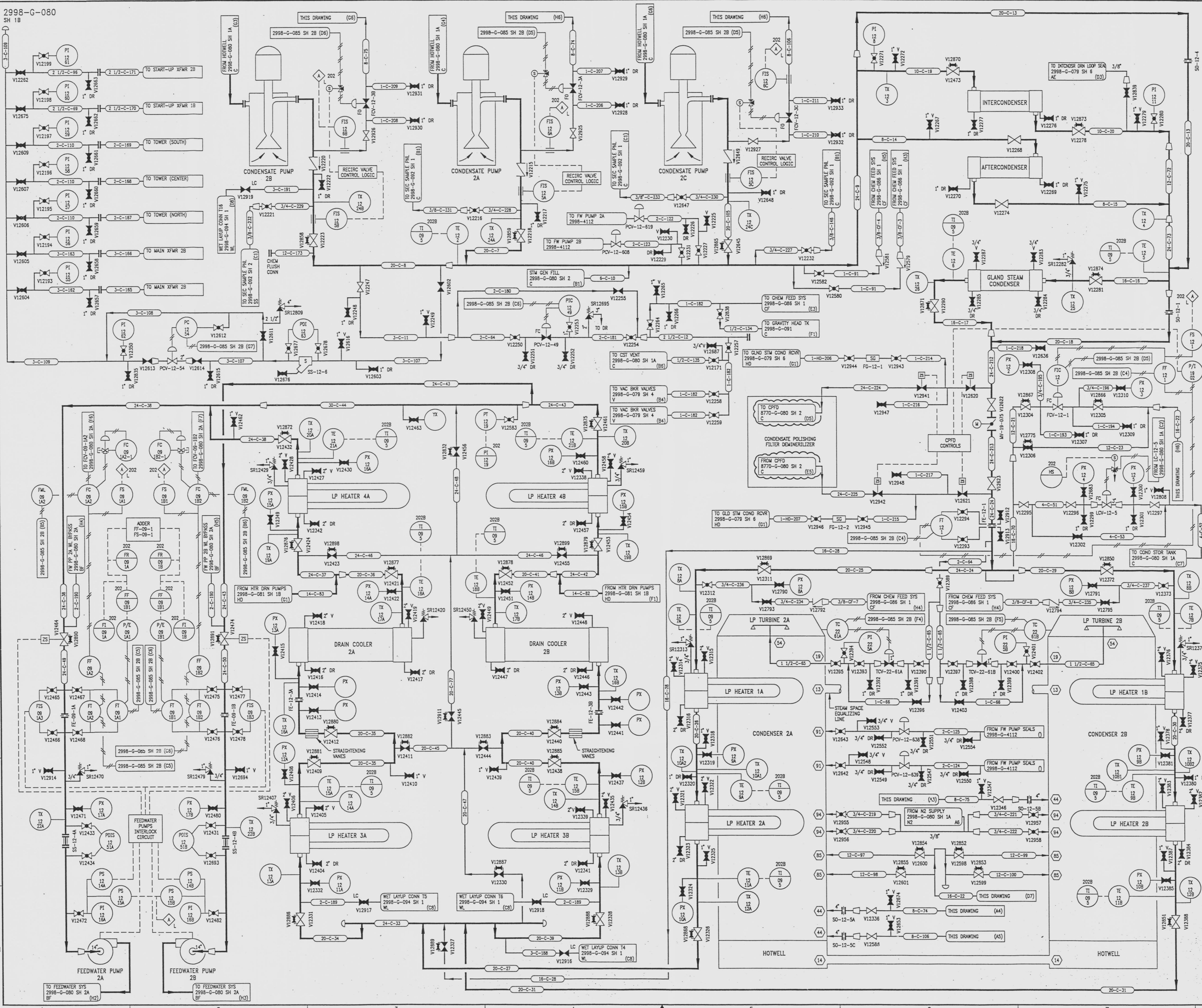


DRAWING NUMBER  
2998-G-080  
SH 1B

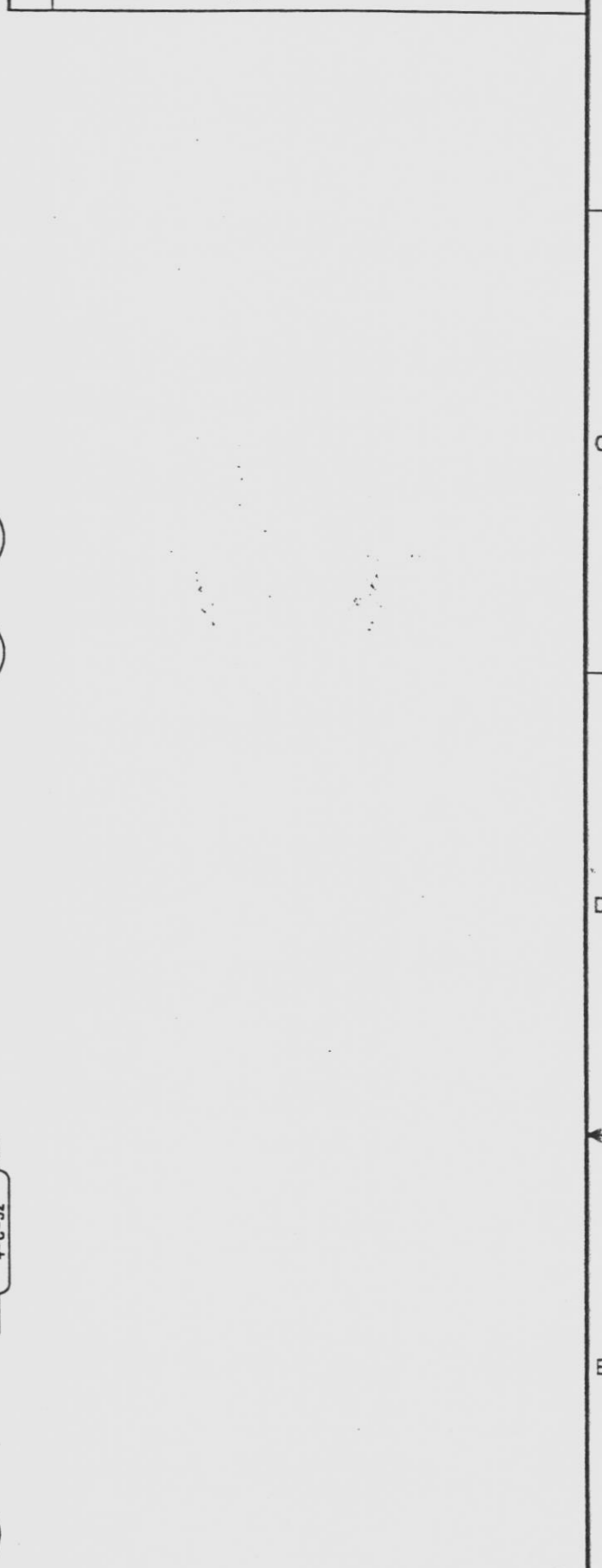
DRAWING NUMBER  
2998-G-080  
SH 1B

DRAWING NUMBER  
2998-G-080  
SH 1B

DRAWING NUMBER  
2998-G-080  
SH 1B



REVISIONS				
NO	DATE	DESCRIPTION	BY	APPROVED
30	7/24/95	DCR-SM-24-052: REDRAWN	GM	RR
31	10/18/95	PC/M 010-228: REVISE (G6)	PAB	RR
32	10/31/95	PC/M 154-224: REVISE (A7)	PAB	HS
33	8/8/96	GRN 86027-5035: DEL: (B3,B4,B5,CA,C7,D8,E,H6 & G8) LC/LD	GM	HS
34	11/9/96	GRN 86027-5021: REV: (C3) VALVE POSITION	GM	POB
35	5/8/97	PC/M 88158: DEL: (A2,A4 & A5) VALVES AND INSTRUMENTS	GM	HS
36	8/25/97	DCR 86028: REV: (D5) CONTINUATIONS	GM	RR



REFERENCE DRAWINGS	
PIPE VALVE & INSTRUMENT SYMBOLS	2998-G-078 SH 100
VALVE LIST	2998-A-051
LINE LIST	2998-B-052
INSTRUMENT INSTALLATION DETAILS	2998-B-057A
INSTRUMENT LIST	2998-B-200

INFORMATION ONLY	
VERIFY WITH A CONTROLLER COPY BEFORE USE.	
NOTE: THIS DRAWING IS MADE FROM REV. 29 OF DRAWING 2998-G-080 SH 1.	
REVISION OF THIS DRAWING MAY REQUIRE UPDATE OF THE FOLLOWING DOCUMENT: FSAR FIG 10.1-2c	
<b>NUCLEAR SAFETY RELATED IN PART ONLY</b>	
FLORIDA POWER & LIGHT COMPANY ST LUCIE PLANT 1983 - 890 MWe EXTENSION - UNIT 2 FLOW DIAGRAM CONDENSATE SYSTEM	
RAYTHEON ENGINEERS & CONSTRUCTORS, INC.	
SCALE: NONE	DATE:
DR: MECH	APPROVAL:
DR: C. GLATT	DATE:
CH: W. PELPHRY	SHEET
	1B
	36