

2998-G-080
SH 1A

REVISIONS

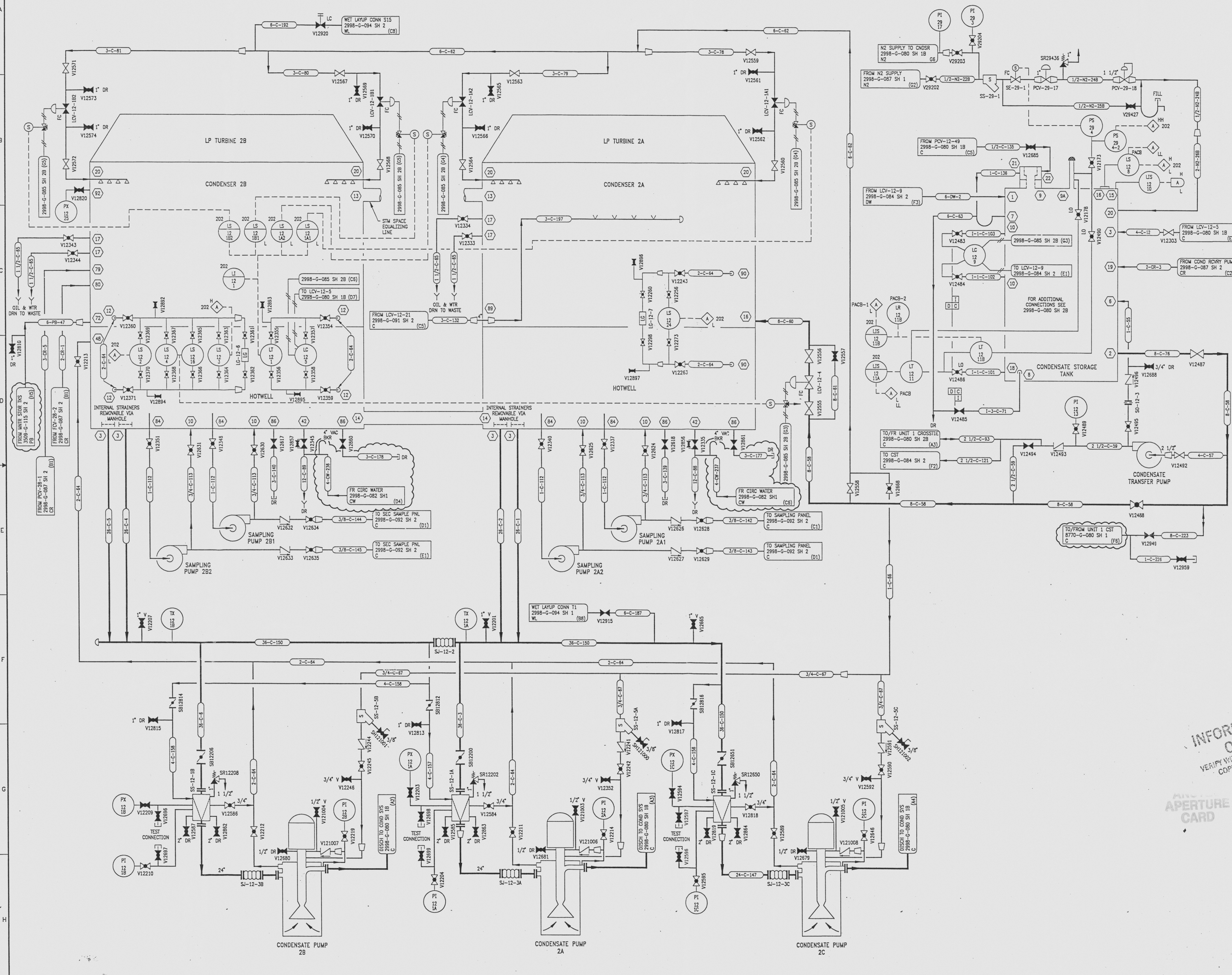
NO	DATE	DESCRIPTION	BY	CH	APPROVED
30	7/24/95	DCR-SM-24-057: REDRAWN			
31	10/19/95	PC/M 010-295: REVISE (A6)	PAB	RR	TWS/JUZ
32	11/16/95	PC/M 010-295: REVISE (D6)	PAB	SD	TWS
33	4/2/96	DCR-SM-96-013: REVISE (D3, D5) VAC BKR	JGW	GM	JUZ
34	6/12/96	PC/M 95037-5035: ADD: (D3, D4, D5) TEST CONNECTIONS, CAPS REV: (D3, D4, D5) SHOW VALVES CLOSED DEL: (D3, D4, D5) POIS'S AND ALARMS	GM	GM	BJP
35	8/8/96	DCR 96037-5035: DEL: (D6, D3, D1, D2, D3, D4, D4 & G5) LC/LD	GM	HS	JUZ
36	10/4/96	DCR 96037-5035: ADD: (D6, D7) VALVE MODE	GM	HS	JRW
37	5/8/97	PC/M 96155: ADD: (F3, F4, F6, G3, G4 & G5) VALVES AND INSTRUMENTS AND PIPING	GM	HS	SM
38	05/9/97	PC/M 96035: ADD: (E2, E5) CONTINUATIONS DCR 960028: REV: (D1, E7) CONTINUATIONS	GM	HS	WJ

DRAWING NUMBER
2998-G-080
SH 1A

DRAWING NUMBER
2998-G-080
SH 1A

DRAWING NUMBER
2998-G-080
SH 1A

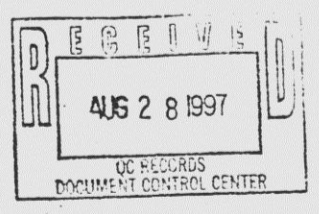
NUMBER



REFERENCE DRAWINGS

PIPE, VALVE & INSTRUMENT SYMBOLS	2998-G-078 SH 100
VALVE LIST	2998-A-051
LINE LIST	2998-B-052
VALVE OPERATIONAL NUMBER INDEX	2998-B-057A
INSTRUMENT INSTALLATION DETAILS	2998-B-231
INSTRUMENT LIST	2998-B-270C

INFORMATION ONLY
VERIFY WITH A CONTROLLED COPY BEFORE USE.



NOTE: THIS DRAWING IS MADE FROM REV. 29 OF DRAWING 2998-G-080 SH 1

REVISION OF THIS DRAWING MAY REQUIRE UPDATE OF THE FOLLOWING DOCUMENT: FSAR FIGURE 10.1-2a

NUCLEAR SAFETY RELATED IN PART ONLY

FLORIDA POWER & LIGHT COMPANY
ST LUCIE PLANT
1983 - 880 MWe EXTENSION - UNIT 2
FLOW DIAGRAM
CONDENSATE SYSTEM

RAYTHEON ENGINEERS & CONSTRUCTORS, INC.	
SCALE: NONE	APPROVAL
DATE: 2998-G-080	DATE: 2998-G-080
DR: MECH	DATE: 2998-G-080
CR: G. SLATT	SHEET: 1A
CH: W. P. PHERRY	1A