

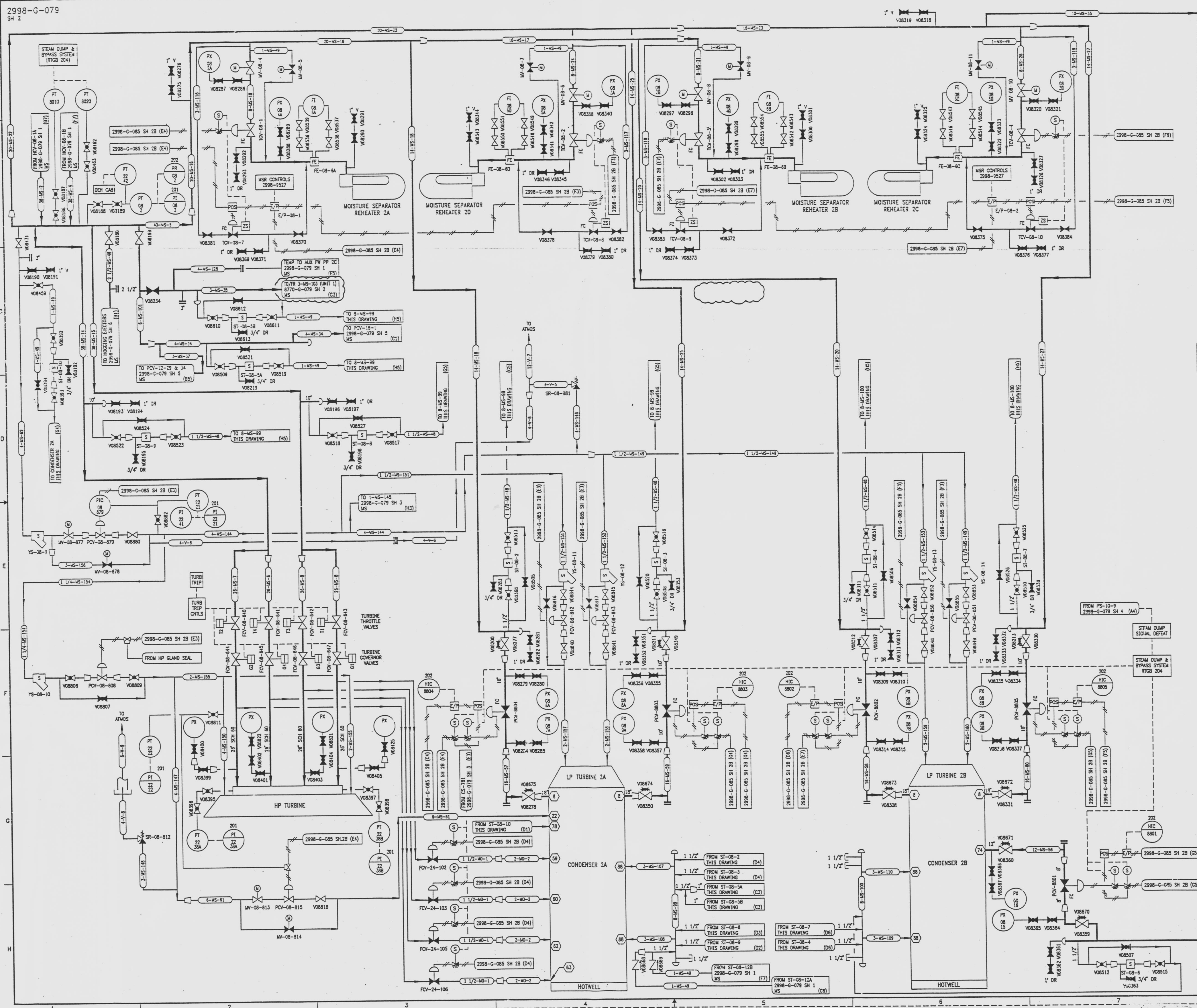
2998-G-079
SH 2

DRAWING NUMBER
2998-G-079
SH 2

DRAWING NUMBER
2998-G-079
SH 2

DRAWING NUMBER
2998-G-079
SH 2

NUMBER
2998-G-079
SH 2



REVISIONS					
NO	DATE	DESCRIPTION	BY	CH	APPROVED
23	7/24/95		GM	RR	JJZ
24	4/2/96		GM	GM	JJZ
25	5/22/97		GM	HS	SHW
26	7/23/97		GM	HS	SHW
27	8/1/97		GM	HS	SHW

NOTE
FOR ADDITIONAL NOTES AND REFERENCE DRAWINGS
SEE 2998-G-079 SH 1

REFERENCE DRAWINGS
STEAM DUMP AND BYPASS SYSTEM 2998-3055

INFORMATION ONLY
VERIFY WITH A CONTROLLED COPY BEFORE USE.

NOTE:
THIS DRAWING IS MADE FROM REV. 22
OF DRAWING 2998-G-079 SH 2

REVISION OF THIS DRAWING MAY REQUIRE UPDATE OF
THE FOLLOWING DOCUMENT: FSAR FIGURE 10.1-1b

FLORIDA POWER & LIGHT COMPANY
ST. LUCIE PLANT
1983 - 890 MW EXTENSION - UNIT 2
FLOW DIAGRAM
MAIN STEAM
SYSTEM

RAYTHEON ENGINEERS & CONTRACTORS, INC.

SCALE: NONE	APPROVAL	DATE:
DR: J. CHESTN		2998-G-079
CH: W. POLINSKY		SHEET 2
		27

977204 0015 -40 E