

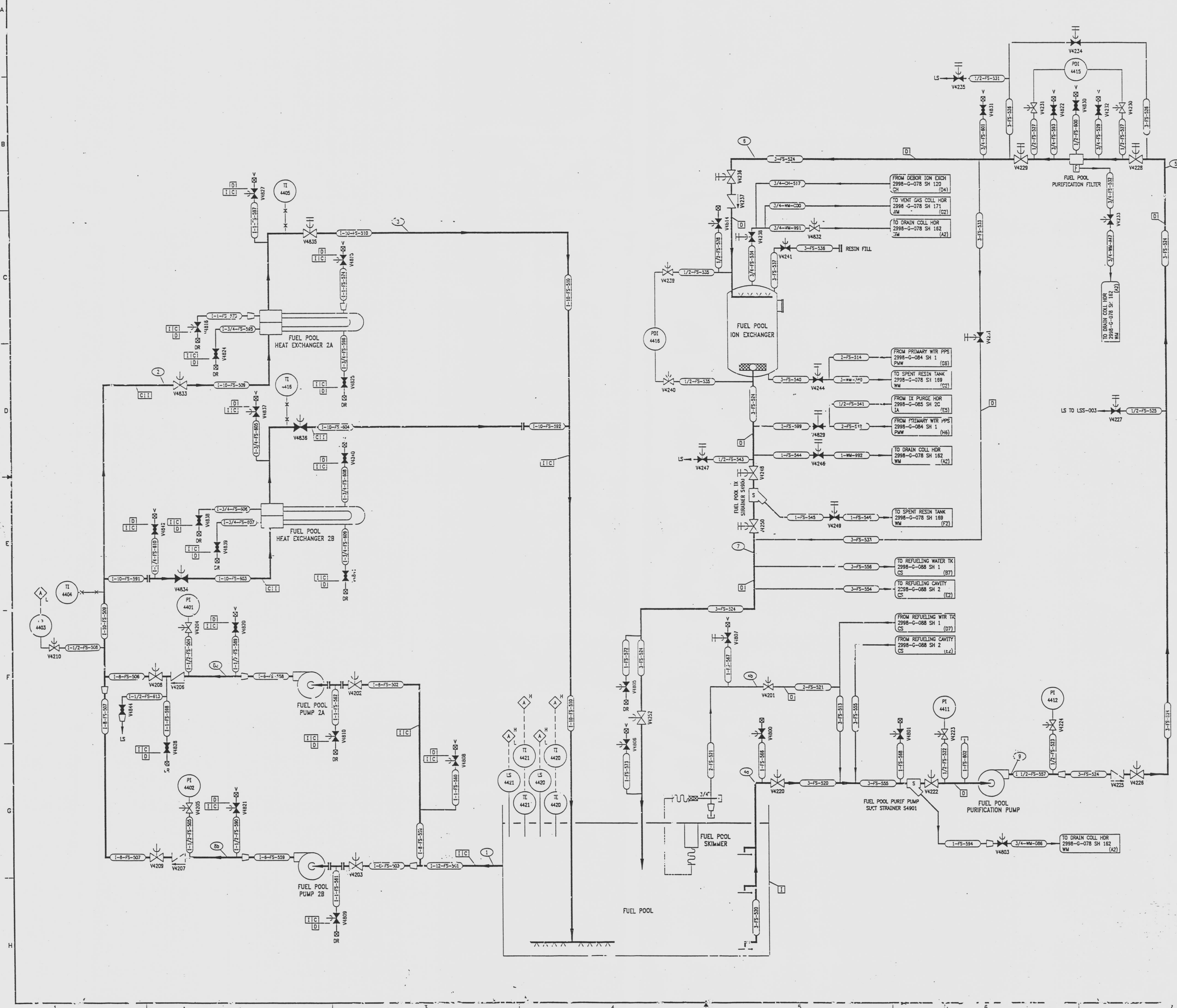
2998-G-078  
SH 140

REVISIONS				
NO	DATE	DESCRIPTION	BY	APPROVED
5	7-14-85		BB	
2998-G-078-140-027 REDRAWN				

DRAWING NUMBER  
2998-G-078  
SH 140  
RAYTHEON ENGINEERS & CONSTRUCTORS, INC.  
PLANT AND INSTRUMENT SYMBOLS

DRAWING NUMBER  
2998-G-078  
SH 140  
RAYTHEON ENGINEERS & CONSTRUCTORS, INC.  
PLANT AND INSTRUMENT SYMBOLS

NUMBER  
2998-G-078  
SH 140  
RAYTHEON ENGINEERS & CONSTRUCTORS, INC.  
PLANT AND INSTRUMENT SYMBOLS



JUN 20 1987

- NOTES
1. THE FUEL POOL PURIFICATION SUCTION LINE (3-FS-520) HAS A 1/4" DIAMETER SYPHON BREAKER HOLE LOCATED 1'-2 1/2" BELOW THE NORMAL POOL WATER LEVEL.
  2. THE FUEL POOL COOLING RETURN LINE (1-10-FS-510) HAS A 1/2" DIAMETER SYPHON BREAKER HOLE LOCATED 1'-0" BELOW NORMAL POOL WATER LEVEL.
  3. THE FUEL POOL PURIFICATION RETURN LINE (3-FS-524) DOES NOT REQUIRE A SYPHON BREAKER SINCE THE PIPE TERMINATES AT A SUBMERGENCE ELEVATION THAT WOULD PRECLUDE EXCESSIVE DRAINAGE BY SYPHON ACTION.

- REFERENCE DRAWINGS
- PIPE, VALVE & INSTRUMENT SYMBOLS 2998-G-078 SH 100
  - VALVE LIST 2998-A-051
  - LINE LIST 2998-B-002
  - VALVE OPERATIONAL NUMBER INDEX 2998-B-057A
  - INSTRUMENT INSTALLATION DETAILS 2998-B-121
  - INSTRUMENT LIST 2998-B-170C

**INFORMATION ONLY**  
VERIFY WITH A CONTROLLED COPY BEFORE USE.

NOTE: THIS DRAWING IS MADE FROM REV. 2 OF DRAWING 2998-G-078 SH 140.

REVISION OF THIS DRAWING MAY REQUIRE UPDATE OF THE FOLLOWING DOCUMENTS: FSAR FIGURE 9.1-6

**NUCLEAR SAFETY RELATED IN PART ONLY**

FLORIDA POWER & LIGHT COMPANY  
ST. LUCIE PLANT  
1983 - 890 MW EXTENSION - UNIT 2  
FLOW DIAGRAM  
FUEL POOL SYSTEM

SCALE: NONE	APPROVAL	DATE:
DR: J. B. BROWN		2998-G-078
CH: J. P. PHIBBS		5/27/85
		1/40
		5

9712040015-58 E