

2998-G-078
SH 107

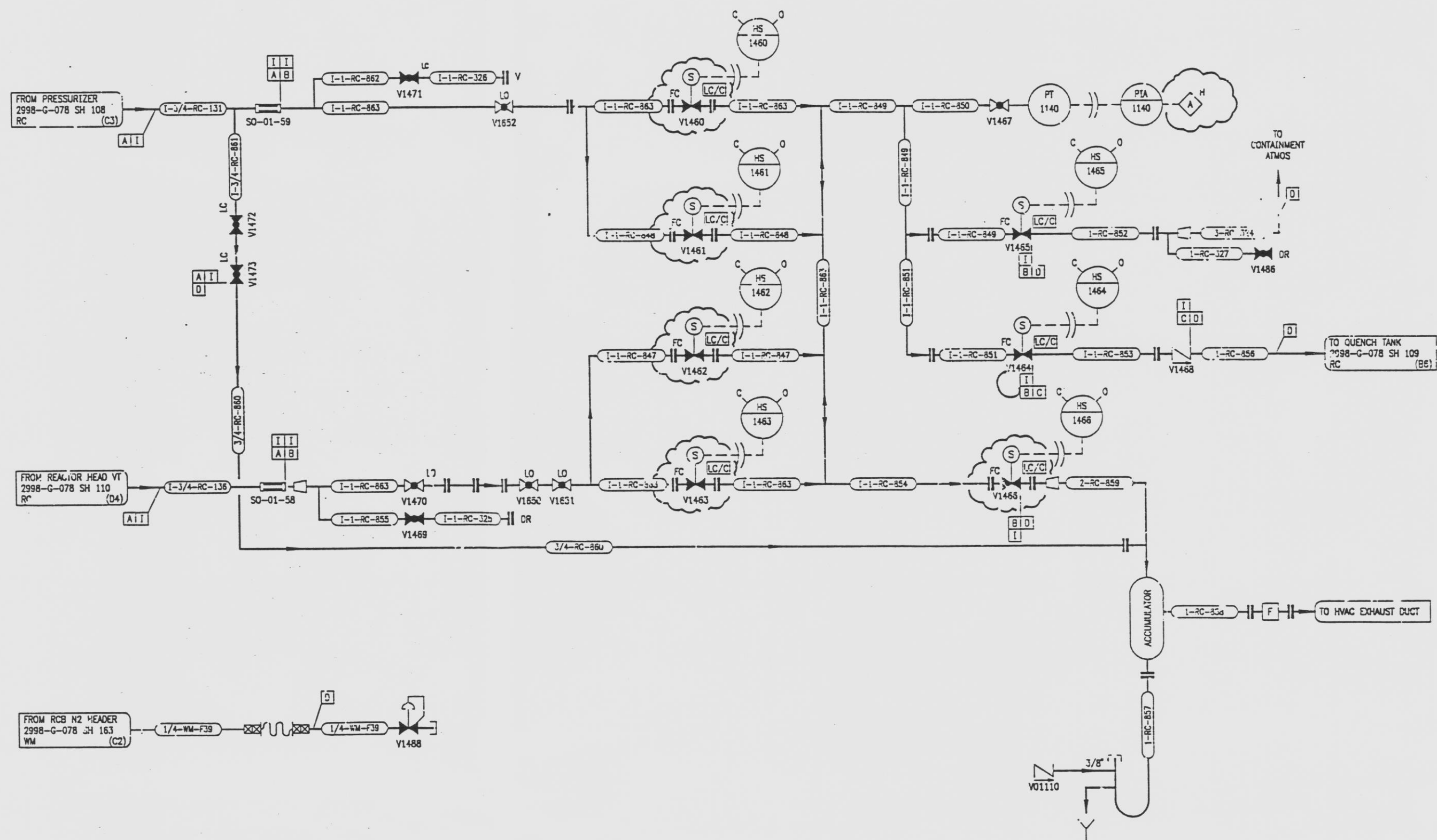
REVISIONS				
NO.	DATE	DESCRIPTION	BY	APPROVED
1	7-24-53	ADD: (S-E-2) RE-DRAWN	BB	MJP
4	1-3-73	ADD: (C-4-E-4) VALVE (V1450, V1451 & V1452)	GM	HS
5	4-22-73	ADD: (D-S-E-5) FLANGE CONNECTIONS	GM	HS
6	6-7-78	REV: (C-8) ALARM SIGNAL FROM H TO L	GM	CW
7	10-4-78	ADD: (C-4) VALVE H FC 'LO'	GM	JRH
8	1/14/81	ADD: (C8) ALARM SIGNAL DEL: (S8) DUPLICATE CATEGORY REFERENCE	GM	JRH

DRAWING NUMBER
2998-G-078

DRAWING NUMBER
2998-G-078

DRAWING NUMBER
2998-G-078

DRAWING NUMBER
2998-G-078



REFERENCE DRAWINGS

PIPE, VALVE & INSTRUMENT SYMBOLS	2998-G-078 SH 100
VALVE LIST	2998-G-078 SH 101
LINE LIST	2998-G-078 SH 102
VALVE OPERATIONAL NUMBER INDEX	2998-G-078 SH 103
INSTRUMENT INSTALLATION DETAILS	2998-G-078 SH 104
INSTRUMENT LIST	2998-G-078 SH 105

NOTE:
THIS DRAWING IS MADE FROM REV. 2
OF DRAWING 2998-G-078 SH 107

REVISION OF THIS DRAWING MAY REQUIRE UPDATE OF
THE FOLLOWING DOCUMENT: FSAR FIGURE 5.1-4b

INFORMATION ONLY
VERIFY WITH A CONTROLLED COPY BEFORE USE.

NUCLEAR SAFETY RELATED IN PART ONLY

FLORIDA POWER & LIGHT COMPANY
ST. LUCIE PLANT
1843 - 890 MW EXTENSION - UNIT 2
FLOW DIAGRAM
REACTOR COOLANT SYSTEM

DATE	APPROVAL
DATE	APPROVAL
DATE	APPROVAL

DATE	2998-G-078
SHEET	8

9712040015 -71 E