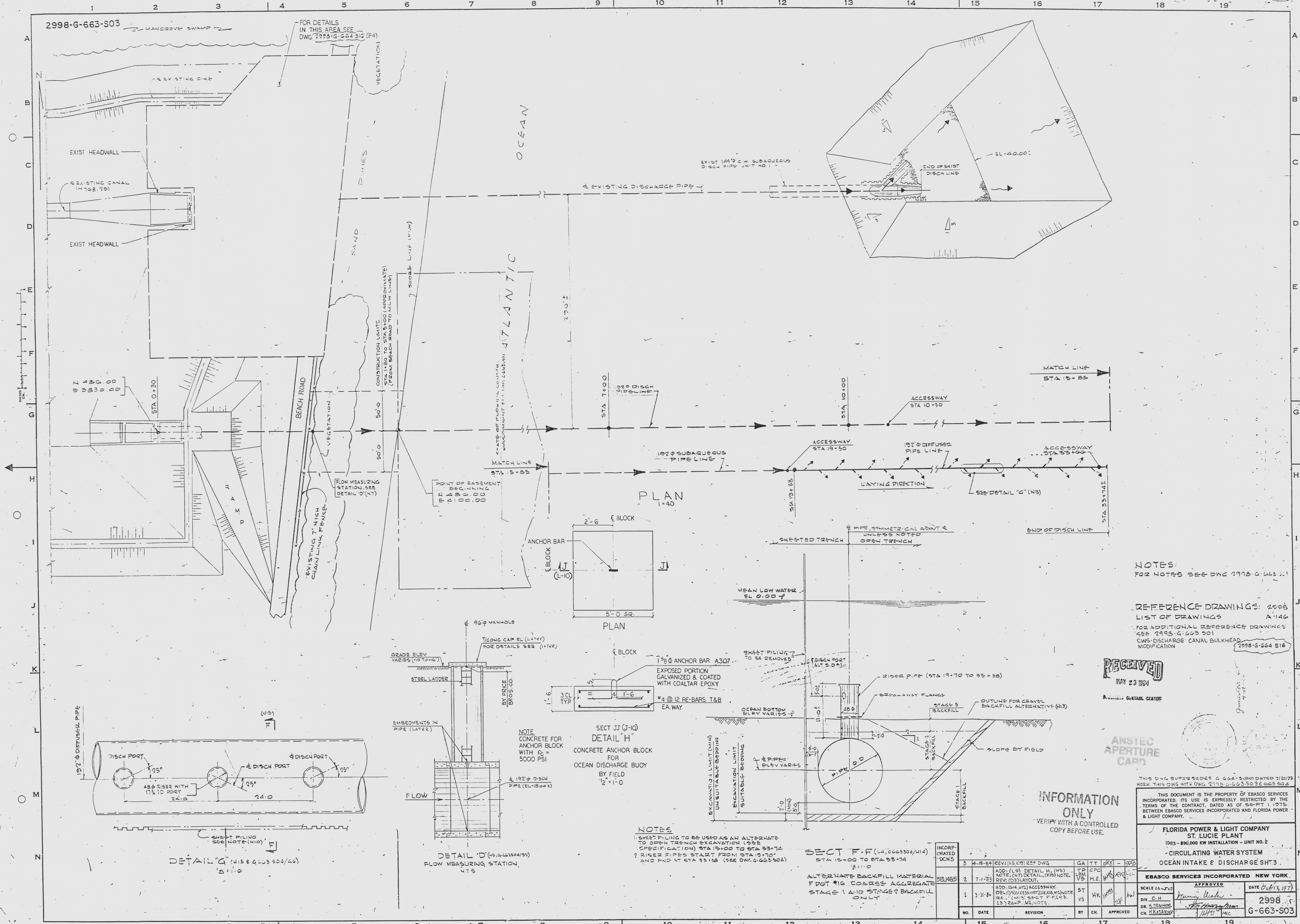


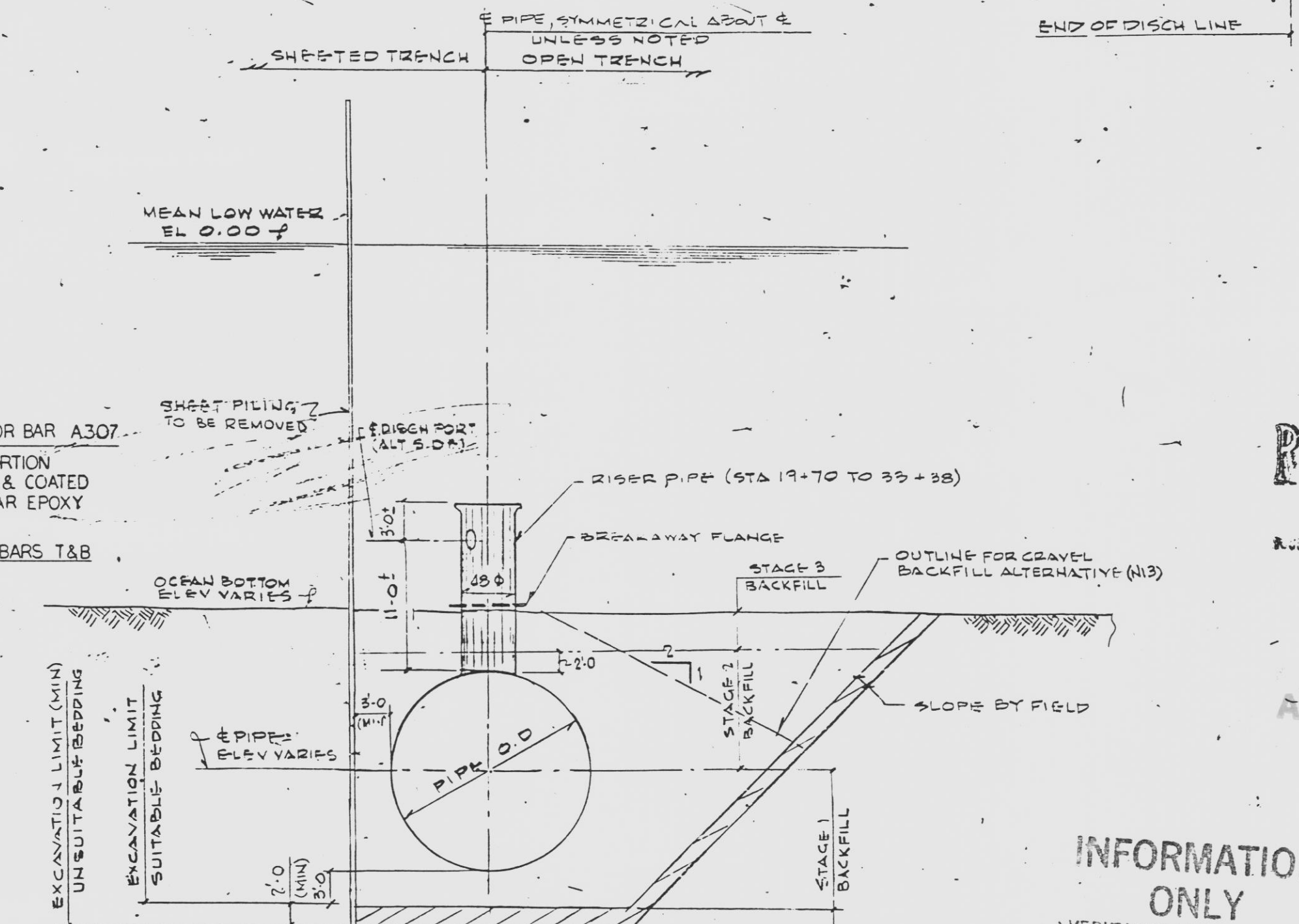
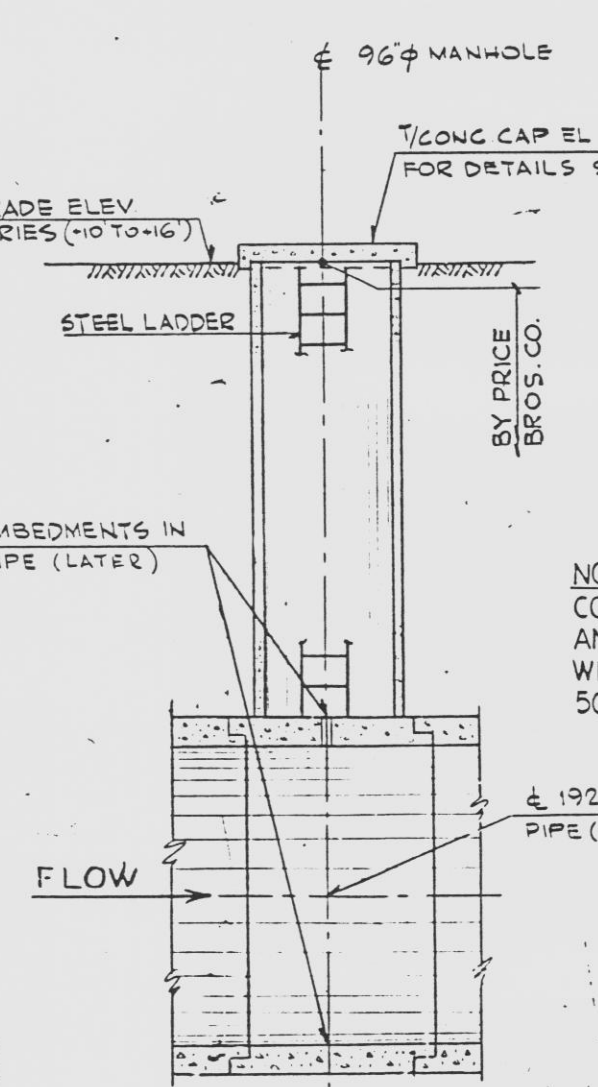
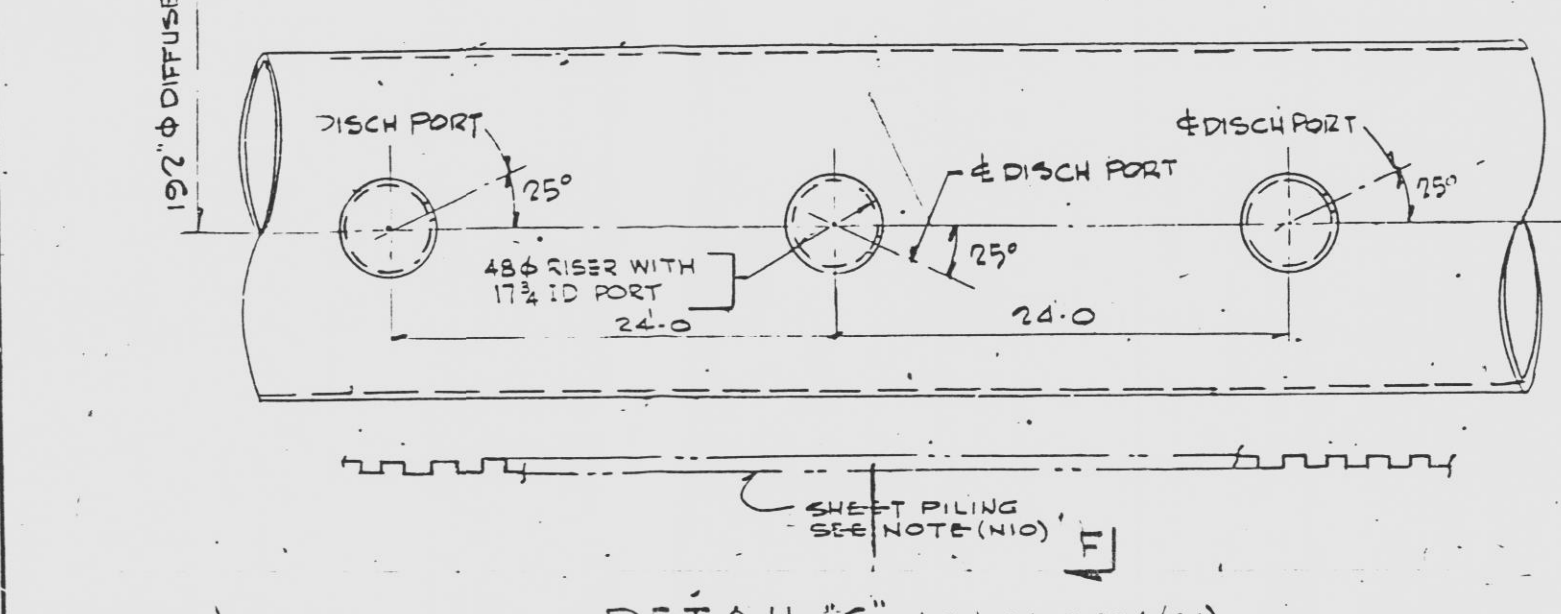
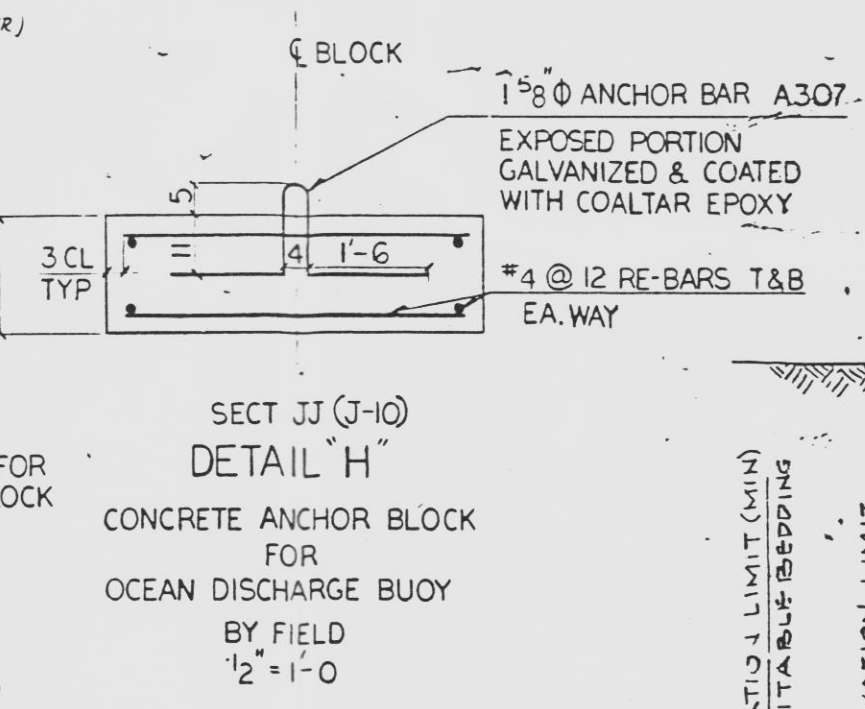
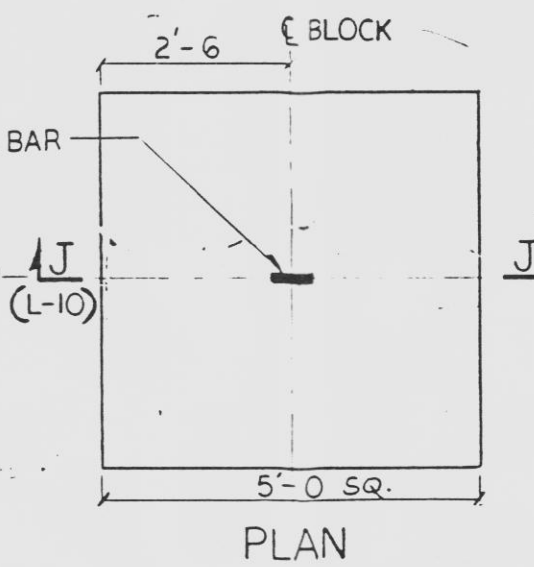
2998-G-663-S03

MANGROVE SWAMP

FOR DETAILS IN THIS AREA SEE DWG 2998-G-664 SIG (F4)



PLAN 1-40



NOTES

1. SHEET PILING TO BE USED AS AN ALTERNATE TO OPEN TRENCH EXCAVATION IS SEE SPECIFICATION STA 15+00 TO STA 33+74.
2. RISER PIPES START FROM STA 19+70 AND END AT STA 33+38 (SEE DWG G-663 S04).

SECT F-F (L4, G663 S04/H14) STA 15+00 TO STA 33+74 1/10

ALTERNATE BACKFILL MATERIAL FDOT #16 COARSE AGGREGATE STAGE 1 AND STAGE 2 BACKFILL ONLY

NOTES:
FOR NOTES SEE DWG 2998-G-663 S01

REFERENCE DRAWINGS: 2998 A-146 LIST OF DRAWINGS FOR ADDITIONAL REFERENCE DRAWINGS SEE 2998-G-663 S01 CWS-DISCHARGE CANAL BULKHEAD MODIFICATION 2998-G-664 S16

RECEIVED
MAY 23 1994
R. WILSON CIVIL CENTER

ANSTEC APERTURE CARD

THIS DWG SUPERSEDES G-664 S01 DATED 7/22/79 WORK THIS DWG WITH DWG 2114 G-663 S03 & G-663 S04

<p>FLORIDA POWER & LIGHT COMPANY ST. LUCIE PLANT 1983 - 896,000 KW INSTALLATION - UNIT NO. 2 CIRCULATING WATER SYSTEM OCEAN INTAKE & DISCHARGE SH. 3.</p>			
<p>INCORPORATED "DCNS"</p>			
NO.	DATE	REVISION	BY
1	3-11-84	ADD: (S14, H12) ACCESSWAY DELINEATION (SEE H12, H13, H14, H15, H16, H17, H18, H19, H20, H21, H22, H23) & R.A.P. (W) NOTE.	ST VS
2	7-1-85	ADD: (L9) DETAIL H, (H5) NOTE, (H7) DETAIL, (H8) NOTE, (H10) LAYOUT.	ST VS
3	4-8-84	REV: (AS K9) REF DWG	GA TT HX - 1993
4	10-8-84	REV: (S13) LAYOUT.	TP CPC M.E. HX HX

SCALE AS NOTED	APPROVED Murray Wachs	DATE Oct 13, 1997
DIV. C.H.	2998	
DR. S. T. CHANDLER		
CH. N. KASABIAN		

9712040915.104