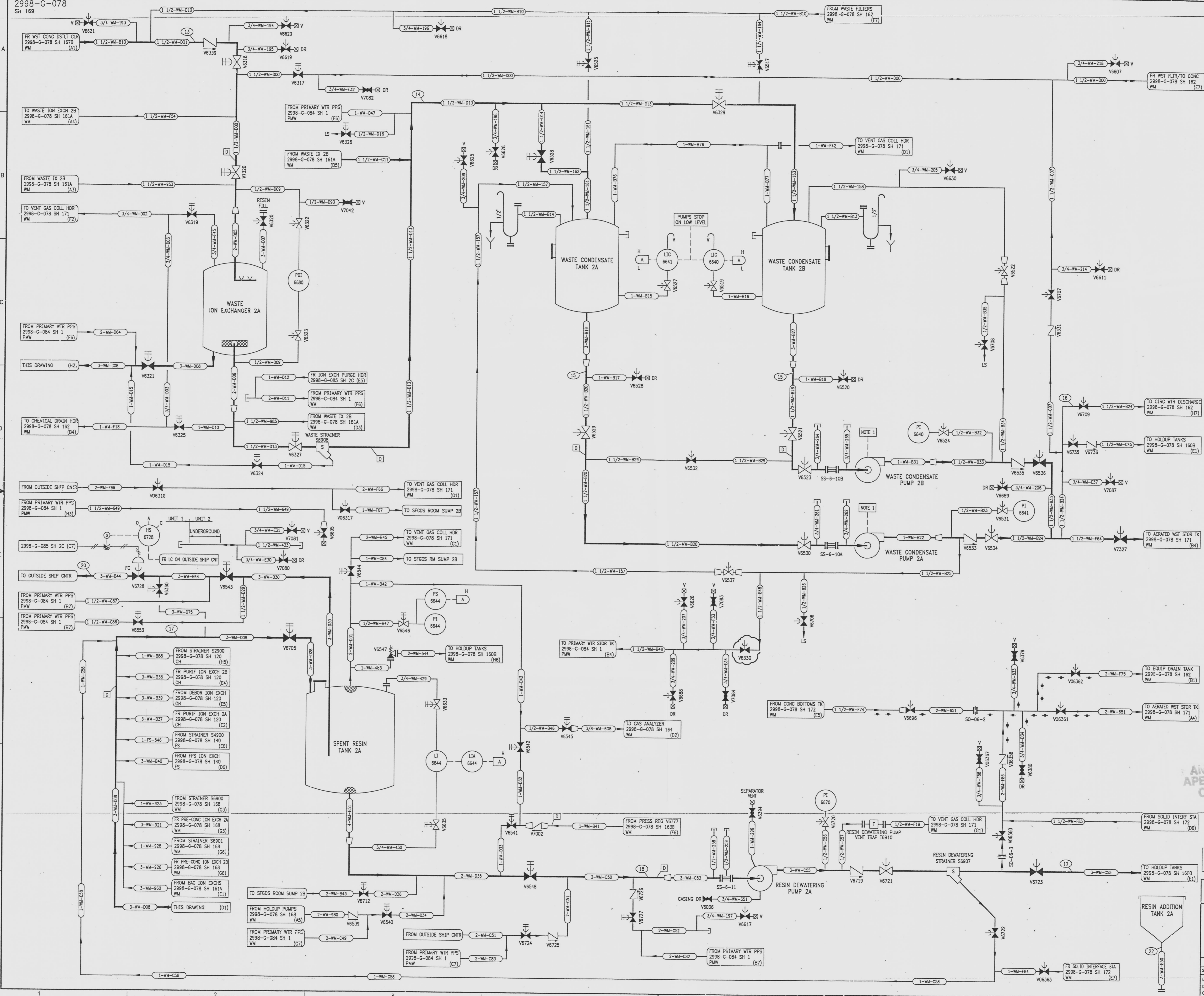


REVISIONS				
NO	DATE	DESCRIPTION	BY	CH
5	7/24/96		CJG	DWC
6	8-9-96	DCR-SLM-94-052: REDRAWN	GM	HS
			DEL: (FS) LC	988

DRAWING NUMBER
2998-G-078
SH 169

DRAWING NUMBER

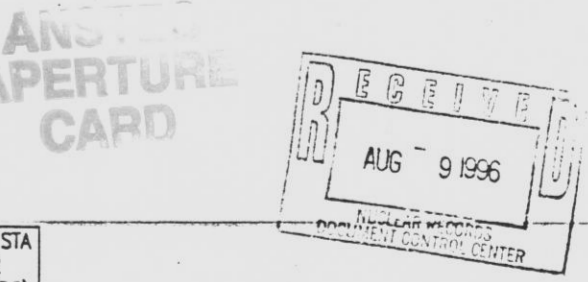
DRAWING NUMBER



- NOTES
1. PUMP STOPS ON HIGH PRIMARY WATER STORAGE TANK LEVEL.
 2. LOCAL ALARMS ARE GROUPED ON SEVERAL LOCAL PANELS. EACH PANEL HAS AN ANNUNCIATOR IN THE CONTROL ROOM.

- REFERENCE DRAWINGS
- PIPE, VALVE & INSTRUMENT SYMBOLS 2998-G-078 SH 100
 - LINE LIST 2998-A-051
 - VALVE OPERATIONAL NUMBER INDEX 2998-B-052
 - INSTRUMENT INSTALLATION DETAILS 2998-B-057A
 - INSTRUMENT LIST 2998-B-231
 - 2998-B-270C

INFORMATION ONLY
VERIFY WITH A CONTROLLED COPY BEFORE USE.



NOTE: THIS DRAWING IS MADE FROM REV. 4 OF DRAWING 2998-G-078 SH 169.

REVISION OF THIS DRAWING MAY REQUIRE UPDATE OF THE FOLLOWING DOCUMENT: FSAR FIGURE 11.2-9

FLORIDA POWER & LIGHT COMPANY
ST LUCIE PLANT
1983 - 890 MW EXTENSION - UNIT 2
FLOW DIAGRAM
WASTE MANAGEMENT SYSTEM

PATHEON ENGINEERS & CONSTRUCTORS, INC.

SCALE: NONE APPROVAL DATE: 2998-G-078
DR: C. CLATT SHEET 169
CH: CUNNINGHAM

971204005-94