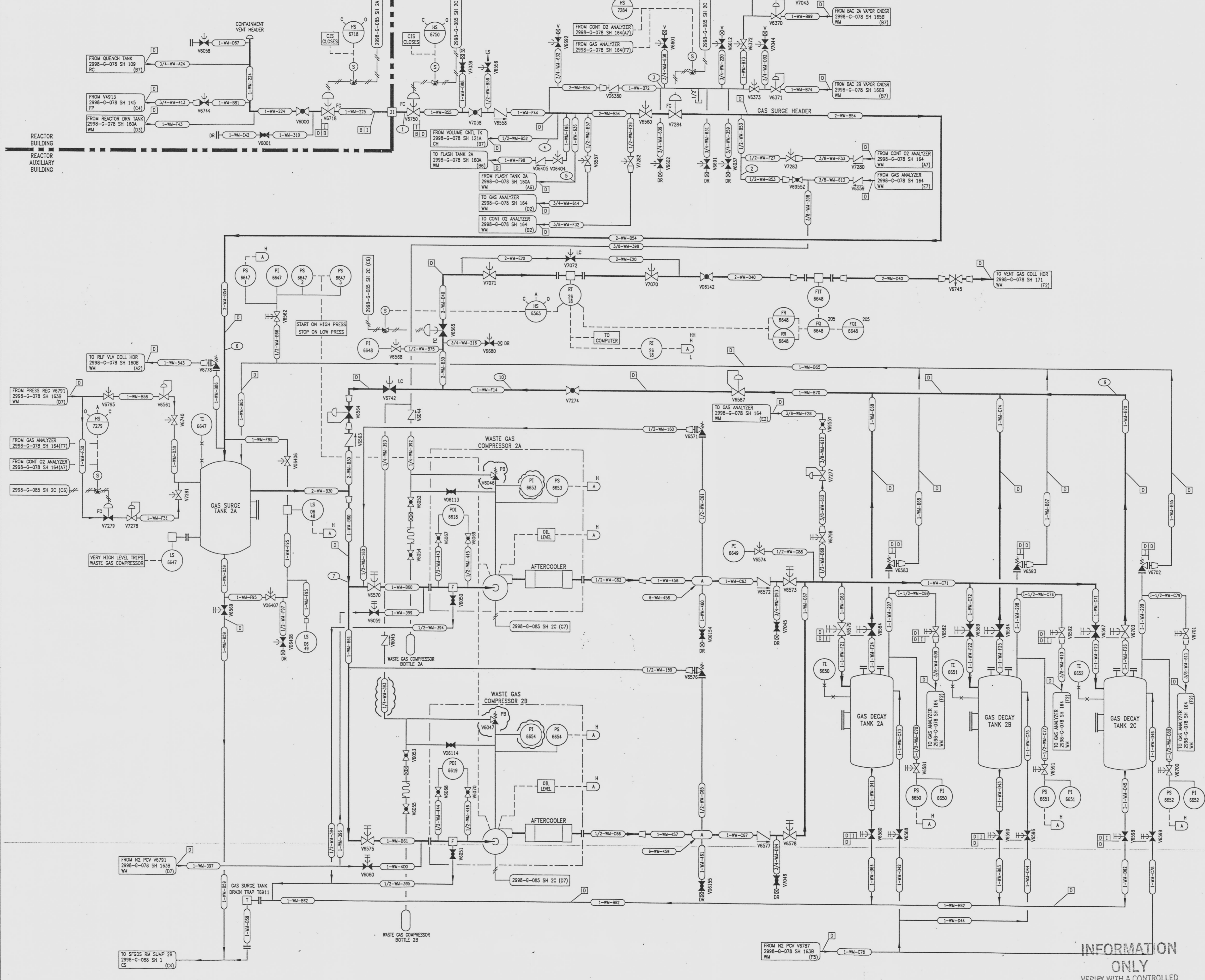


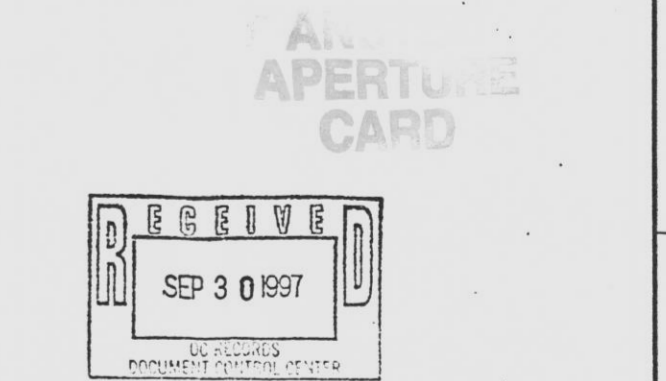
2998-G-078
SH 163A



REVISIONS					
NO	DATE	DESCRIPTION	BY	CH	APPROVED
11	7/24/95	DESCRIPTION	JCG	DWC	JJZ
DOR-SM-84-052: REDRAWN					
12	8/8/96	CRN 86037-6036; DEL: (B4) LO	HJF	HS	JJZ
13	10/4/96	CRN 86037-6036; ADD: (C4) VALVE MODE LC	WZ	HS	JRH
14	7/1/97	DOR 970152; ADD: (E4,F4) PB-PUSH BUTTON, TAG NUMBERS REF: (F3) LINE NUMBER SIZE.	GM	HS	JJZ

NOTE
LOCAL ALARMS ARE GROUPED ON SEVERAL LOCAL PANELS.
EACH LOCAL PANEL HAS AN ANNUNCIATOR IN THE CONTROL ROOM.

REFERENCE DRAWINGS
PIPE, VALVE & INSTRUMENT SYMBOLS 2998-G-078 SH 100
VALVE LIST 2998-A-051
LINE LIST 2998-B-052
VALVE OPERATIONAL NUMBER INDEX 2998-B-057A
INSTRUMENT INSTALLATION DETAILS 2998-B-231
INSTRUMENT LIST 2998-B-270C



NOTE:
THIS DRAWING IS MADE FROM REV. 10
OF DRAWING 2998-G-078 SH 163

REVISION OF THIS DRAWING MAY REQUIRE UPDATE OF
THE FOLLOWING DOCUMENT: FSAR FIGURE 11.3-1

**NUCLEAR SAFETY RELATED
IN PART ONLY**

FLORIDA POWER & LIGHT COMPANY
ST LUCIE PLANT
1983 - 890 MWe EXTENSION - UNIT 2
FLOW DIAGRAM
WASTE MANAGEMENT
SYSTEM

RAYTHEON ENGINEERS & CONSTRUCTORS, INC.	
SCALE: NONE	APPROVAL
DATE: 2998-G-078	DATE: 2998-G-078
DW: J. G. ...	DR: J. G. ...
CH: SUNNINGHAM	CH: SUNNINGHAM
SHEET 163A	SHEET 163A

INFORMATION ONLY
VERIFY WITH A CONTROLLED COPY BEFORE USE.

DRAWING NUMBER
2998-G-078
SH 163A
RAYTHEON ENGINEERS & CONSTRUCTORS, INC.
SAN DIEGO, CALIFORNIA
REVISION 10

DRAWING NUMBER
2998-G-078
SH 163A
RAYTHEON ENGINEERS & CONSTRUCTORS, INC.
SAN DIEGO, CALIFORNIA
REVISION 10

DRAWING NUMBER
2998-G-078
SH 163A
RAYTHEON ENGINEERS & CONSTRUCTORS, INC.
SAN DIEGO, CALIFORNIA
REVISION 10

9712040015-95

F