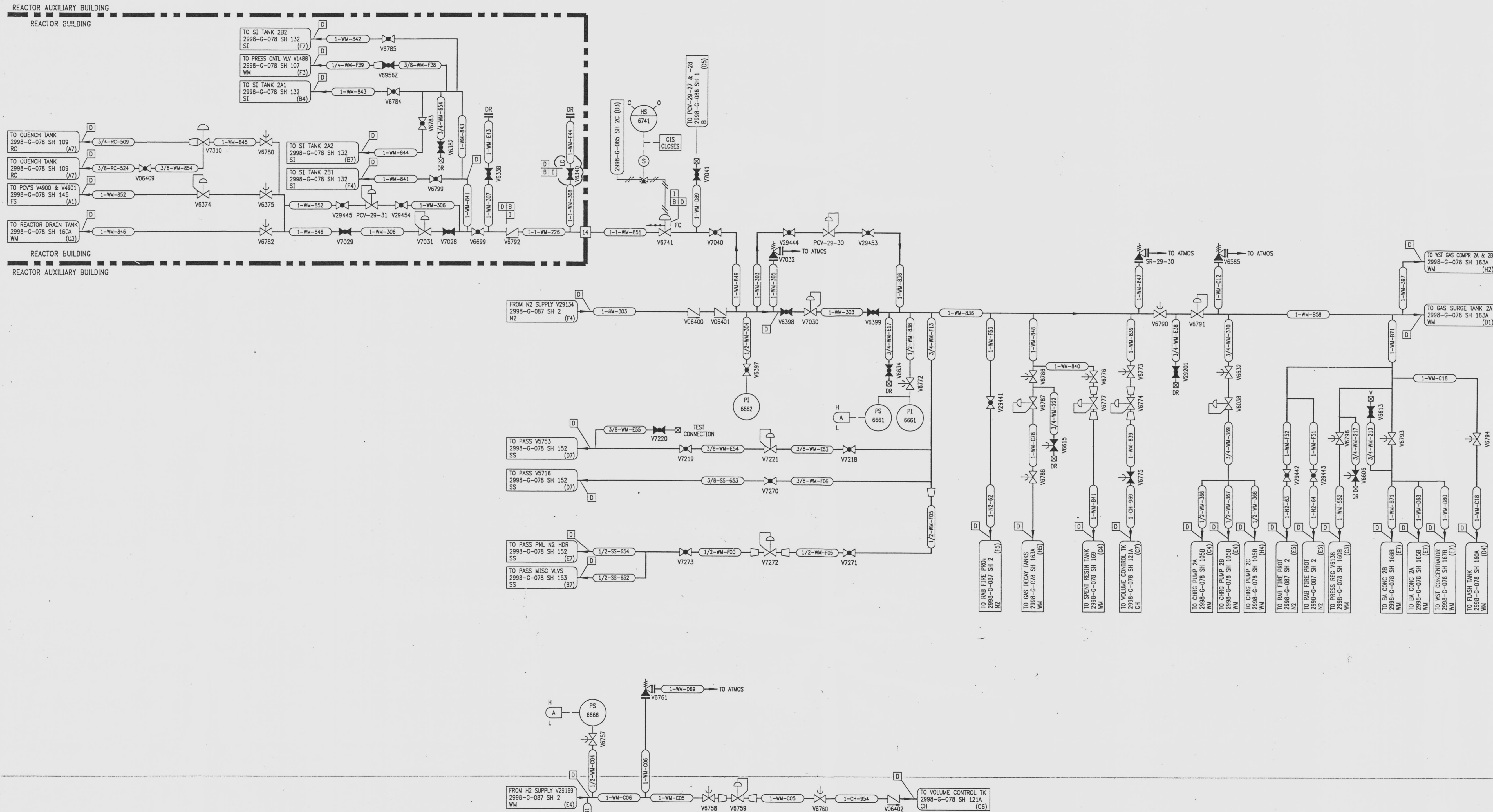


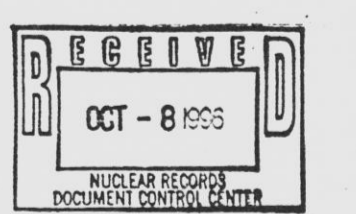
NO	DATE	DESCRIPTION	BY	CH	APPROVED
11	7/24/95	DCR-SLM-34-057: REDRAWN	JCG	DW	JJZ
12	8/21/95	PCM 064-295: DEL (E4) INST. & ALARM	CM	HS	JJZ
13	10-4-96	CRN 86037-6038: ADD: (C3) VALVE MODE LC	MZ		JJZ

DRAWING NUMBER
2998-G-078
SH 163B

DRAWING NUMBER
PLANT HOLD CORPORATION - IRVINE, CALIFORNIA



NOTE
FOR NOTES AND REFERENCE DRAWINGS SEE 2998-G-078 SH 163A.



NOTE:
THIS DRAWING IS MADE FROM REV. 10
OF DRAWING 2998-G-078 SH 163

REVISION OF THIS DRAWING MAY REQUIRE UPDATE OF
THE FOLLOWING DOCUMENT: FSAR FIGURE 11.3-1

NUCLEAR SAFETY RELATED
IN PART ONLY

FLORIDA POWER & LIGHT COMPANY
ST. LUCIE PLANT
1983 - 890 MWe EXTENSION - UNIT 2
FLOW DIAGRAM
WASTE MANAGEMENT
SYSTEM

RAYTHEON ENGINEERS & CONSTRUCTORS, INC.	
SCALE: NONE	APPROVAL DATE:
DR: MECH	2998-G-078
DR: J. GIPSE	SHEET
CH: CLUNNINGHAM	163B
	13

INFORMATION
ONLY
VERIFY WITH A CONTROLLED
COPY BEFORE USE.
ANSTEAD
APERTURE
CARD