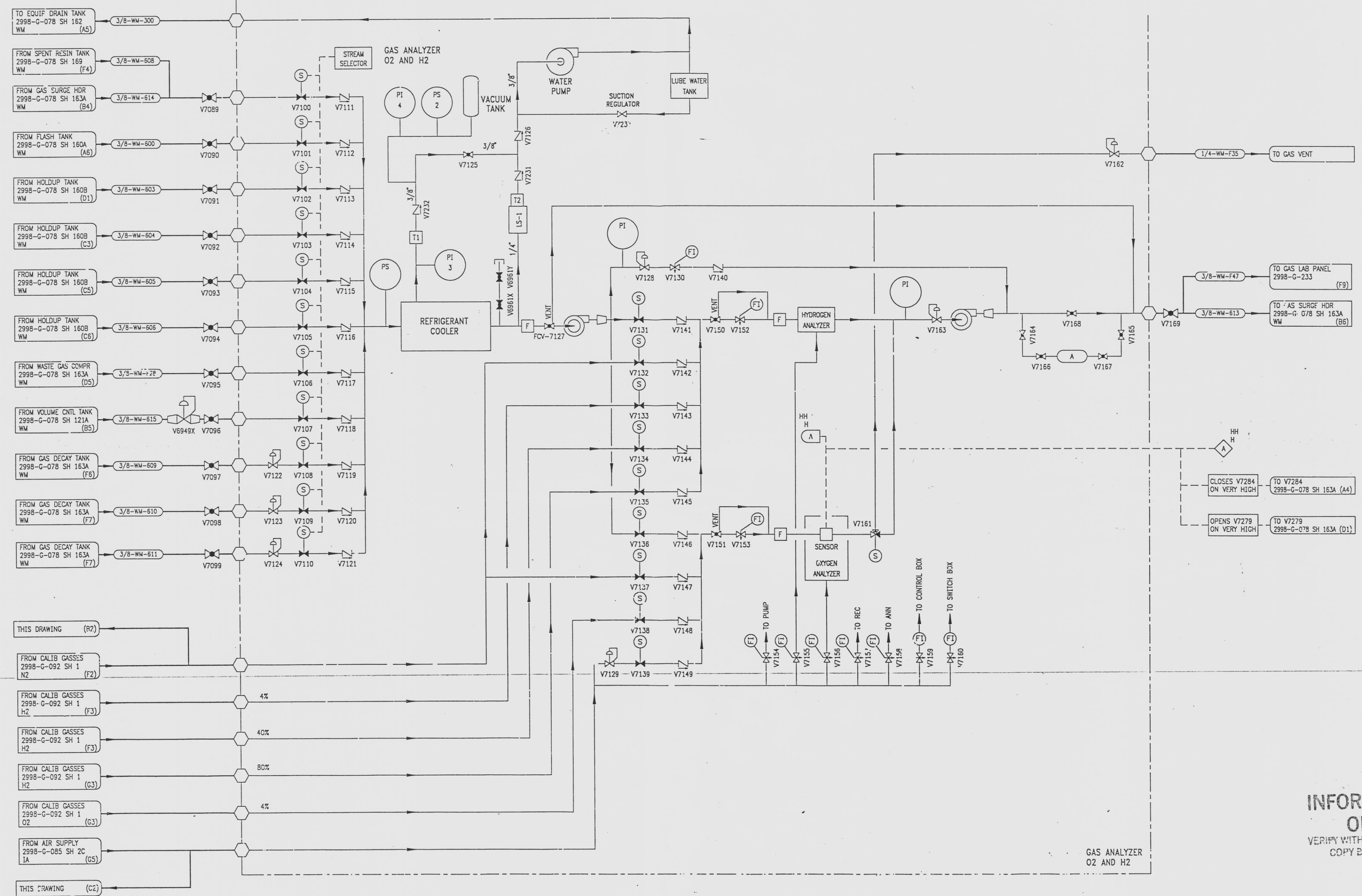
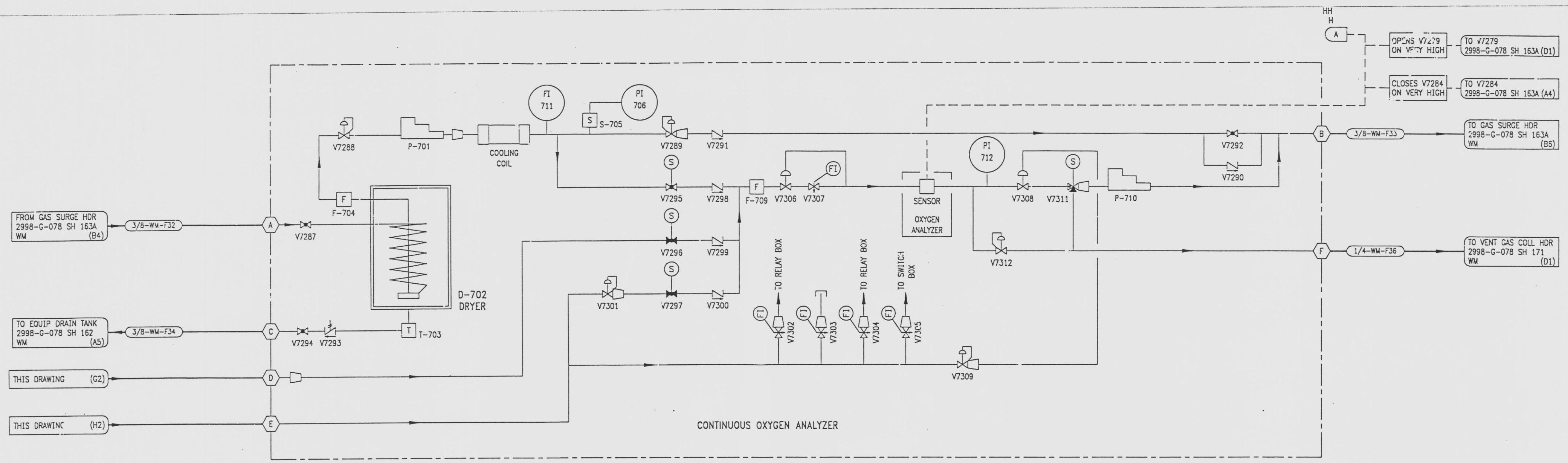


NO	DATE	DESCRIPTION	BY	CHK	APPROVED
4	7-24-95	OPENS V7279 ON VERY HIGH CLOSES V7284 ON VERY HIGH	BB	DWC	[Signature]



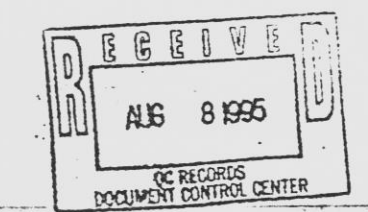
DRAWING NUMBER
2998-G-078
SH 164

DRAWING NUMBER
2998-G-078
SH 164

DRAWING NUMBER

NUMBER

- REFERENCE DRAWINGS
- PIPE, VALVE & INSTRUMENT SYMBOLS 2998-G-078 SH 100
 - VALVE LIST 2998-A-C11
 - LINE LIST 2998-B-052
 - VALVE OPERATIONAL NUMBER INDEX 2998-B-07A
 - INSTRUMENT INSTALLATION DETAILS 2998-B-231
 - INSTRUMENT LIST 2998-G-270C
 - CONTINUOUS GAS ANALYZER 2998-16041



NOTE:
THIS DRAWING IS MADE FROM REV. 3
OF DRAWING 2998-G-078 SH 164.

REVISION OF THIS DRAWING MAY REQUIRE UPDATE OF THE FOLLOWING DOCUMENTS:
A. FSAR FIGURE 11.3-1j
B. 1/4" CONTINUOUS GAS ANALYZER 2998-16041

INFORMATION ONLY
VERIFY WITH A CONTROLLED COPY BEFORE USE.

FLORIDA POWER & LIGHT COMPANY
ST LUCIE PLANT
1983 - 890 MWe EXTENSION - UNIT 2
FLOW DIAGRAM
WASTE MANAGEMENT SYSTEM

SCALE: NONE	APPROVAL	DATE:
DR: B. BLUM	[Signature]	2998-G-078
CHK: D. CUNNINGHAM	[Signature]	SHEET 164