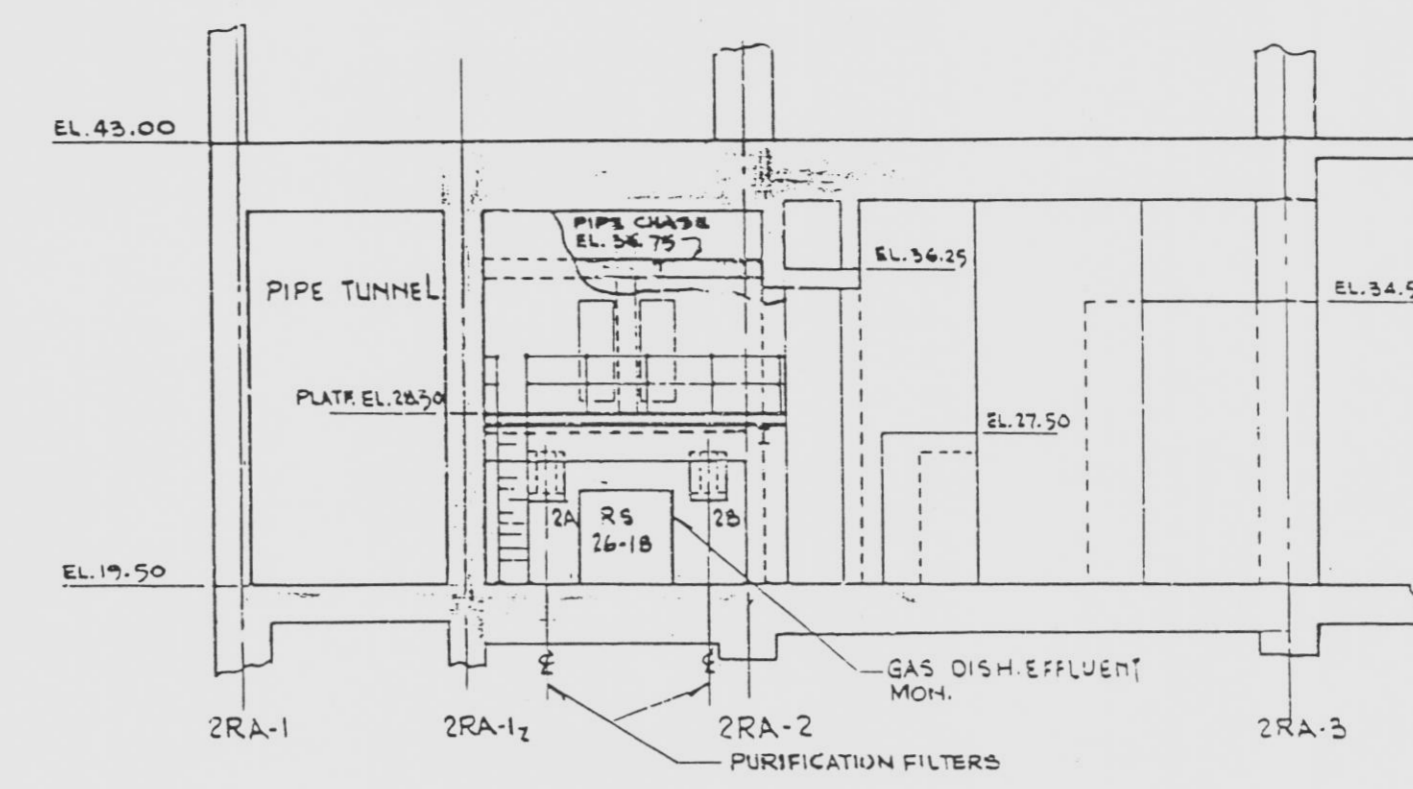


REVISIONS				
NO	DATE	DESCRIPTION	BY	APPROVED
13	10-24-91	THIS DOCUMENT HAS BEEN PHOTOGRAPHICALLY REPRODUCED FOR PREVIOUS REV BLOCKS SEE RECORD MYLAR 2998-G-076 REV 13	NA	AP
14	3/29/95	ADD: (115) SURGE TANK, GENERAL DELETED (18) KEY PLAN	J.F.T.	AP
15	3/29/95	REVISED: COMMUNICATION CONSOLE (6-4)	RC	AP
16	10-25-96	REV: (64-56) ANPS WORK STATION	G.W.	AP



SECTION N-N
2998-G-070 (F-12)

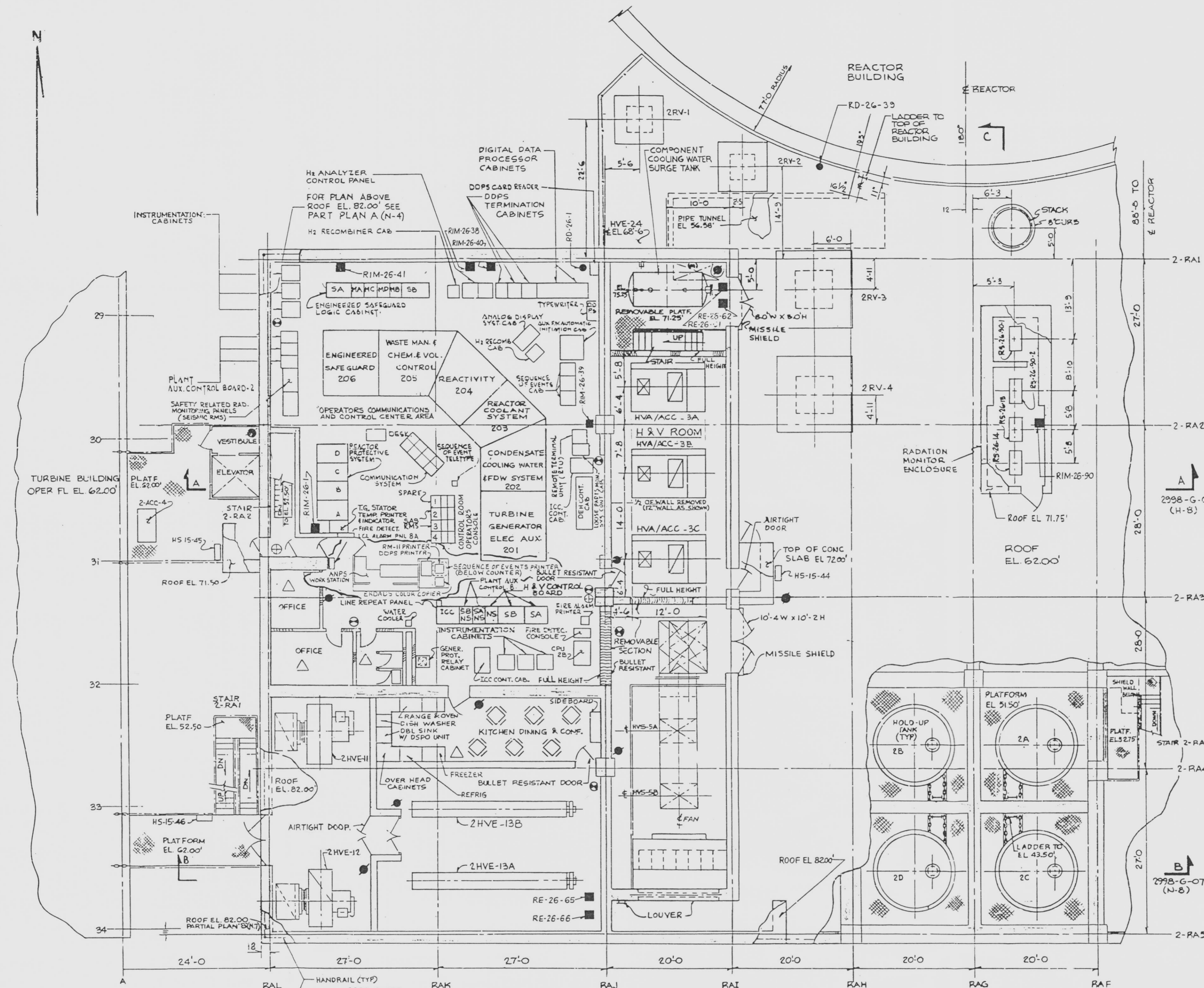
NOTE
1. FOR GENERAL NOTES, REFERENCE DRAWINGS & LEGEND SEE 2998-G-069

DRAWING NUMBER
2998-G-076
REV. 16

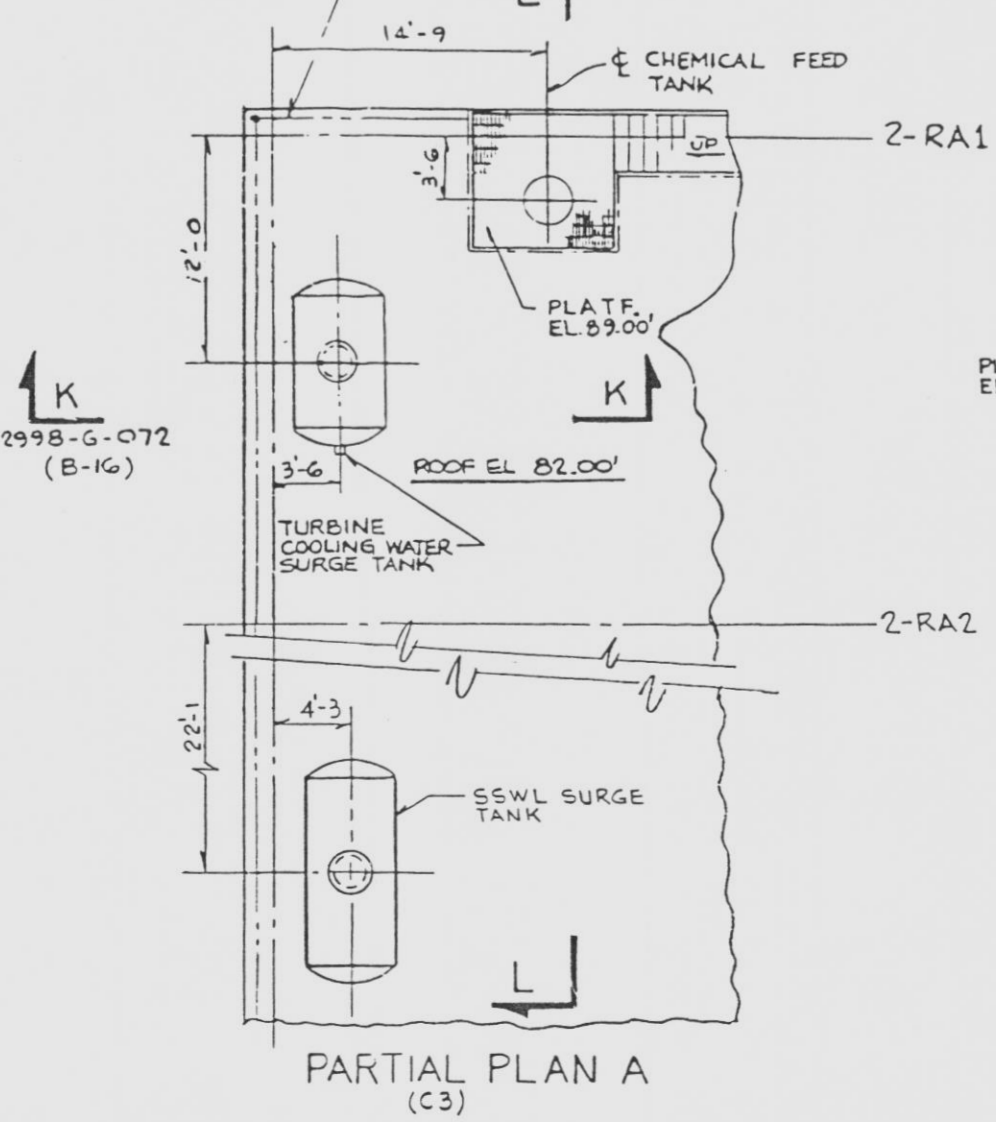
DRAWING NUMBER
2998-G-076
REV. 16

DRAWING NUMBER
2998-G-076
REV. 16

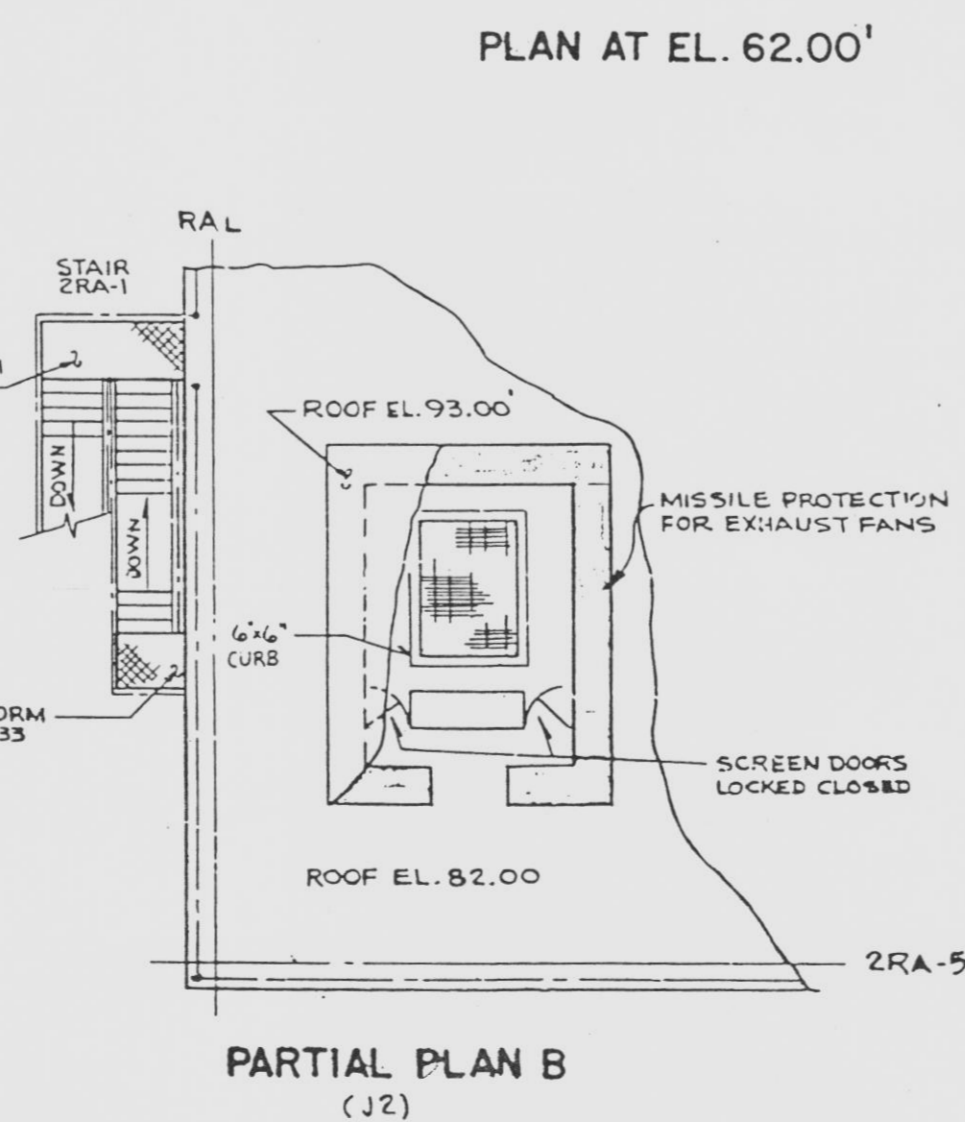
DRAWING NUMBER
2998-G-076
REV. 16



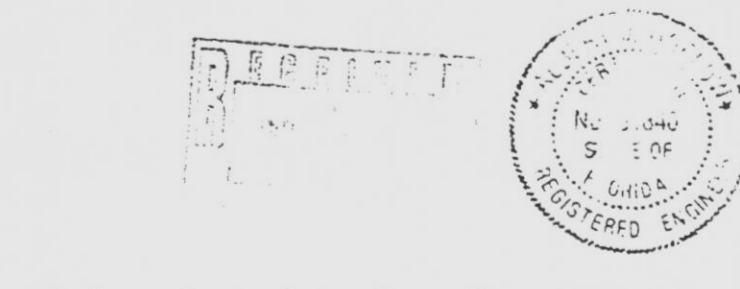
PLAN AT EL. 62.00'



PARTIAL PLAN A
(C3)



PARTIAL PLAN B
(J2)



THE DESIGN INFORMATION FOR THE CHANGES SHOWN IN THIS REVISION HAS BEEN ENGINEERED BY FLORIDA POWER & LIGHT COMPANY.

THIS DOCUMENT IS THE PROPERTY OF EBASCO SERVICES INCORPORATED. ITS USE IS EXPRESSLY RESTRICTED BY THE TERMS OF THE CONTRACT, DATED AS OF SEPTEMBER 1, 1975 BETWEEN EBASCO SERVICES INCORPORATED AND FLORIDA POWER & LIGHT COMPANY.

FLORIDA POWER & LIGHT COMPANY
ST. LUCIE PLANT
1983-800 MW EXTENSION UNIT # 2
GENERAL ARRANGEMENT
REACTOR AUXILIARY BUILDING
MISCELLANEOUS PLANS & SECTIONS
EBASCO SERVICES INCORPORATED

INFORMATION ONLY
VERIFY WITH A CONTROL COPY BEFORE USE.

SCALE 1/8"=1'-0"
DW. MESH
DR. AMOROS
CH. BERGERON
APPROVED
DATE OCT 17, 1988
2998-G-076
16

E 971204 0015-92