

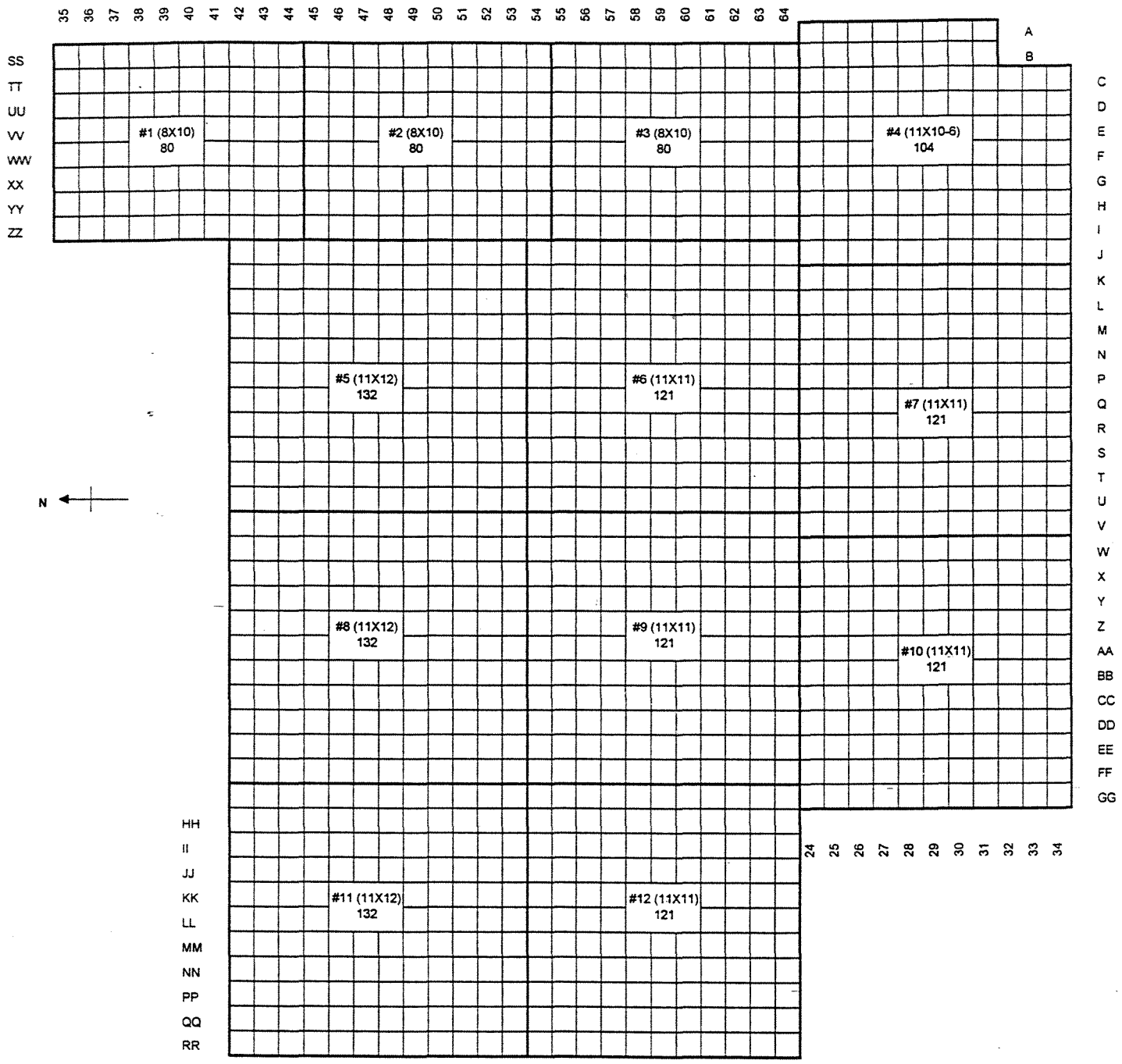
INDIAN POINT 3	FSAR UPDATE
FUEL TRANSFER SYSTEM	
REV 1 DEC 1997	FIGURE NO. 9.5-1

REGION 1 COLUMNS

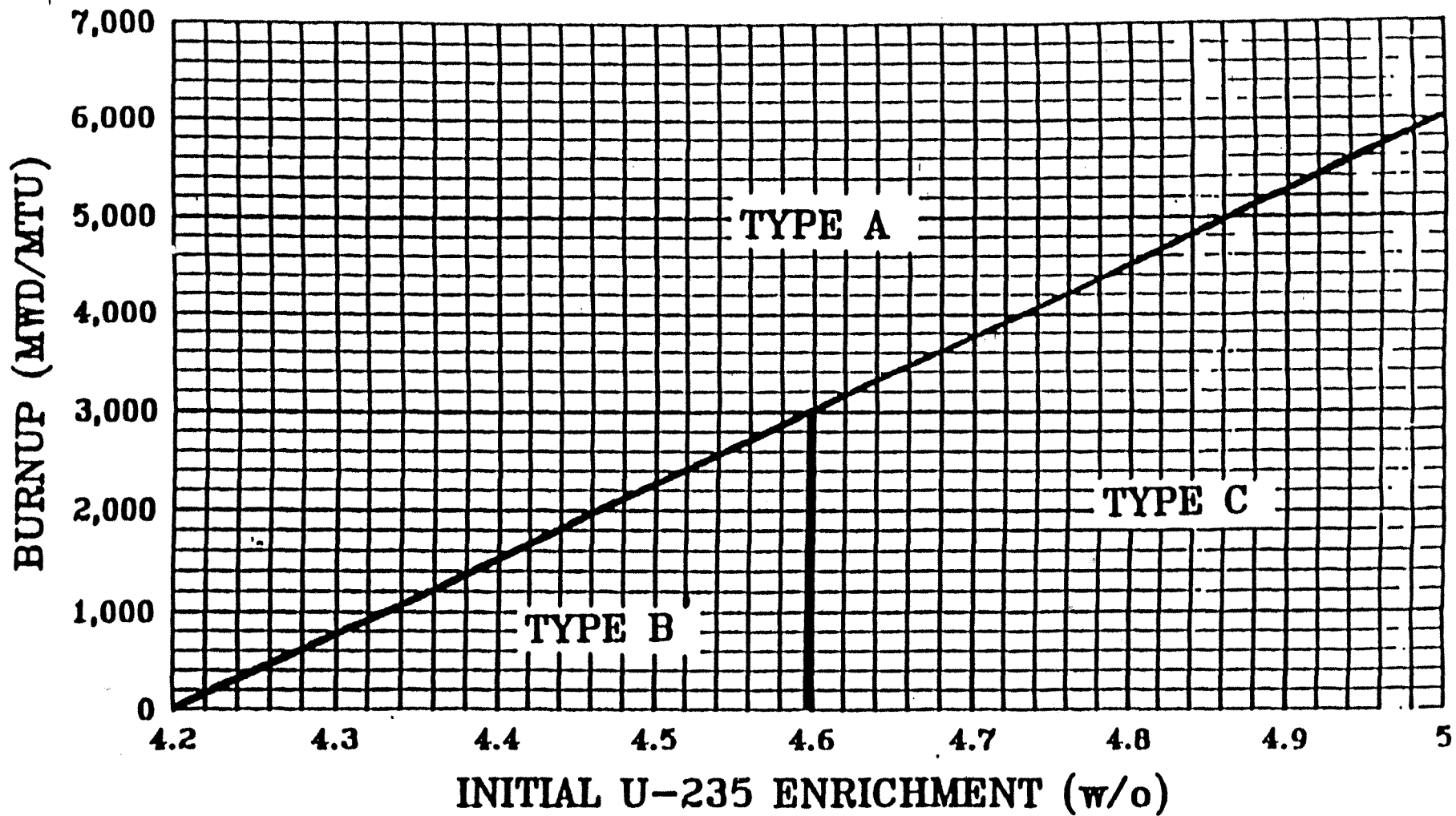
REGION 2 COLUMNS

REGION 1 ROWS

REGION 2 ROWS



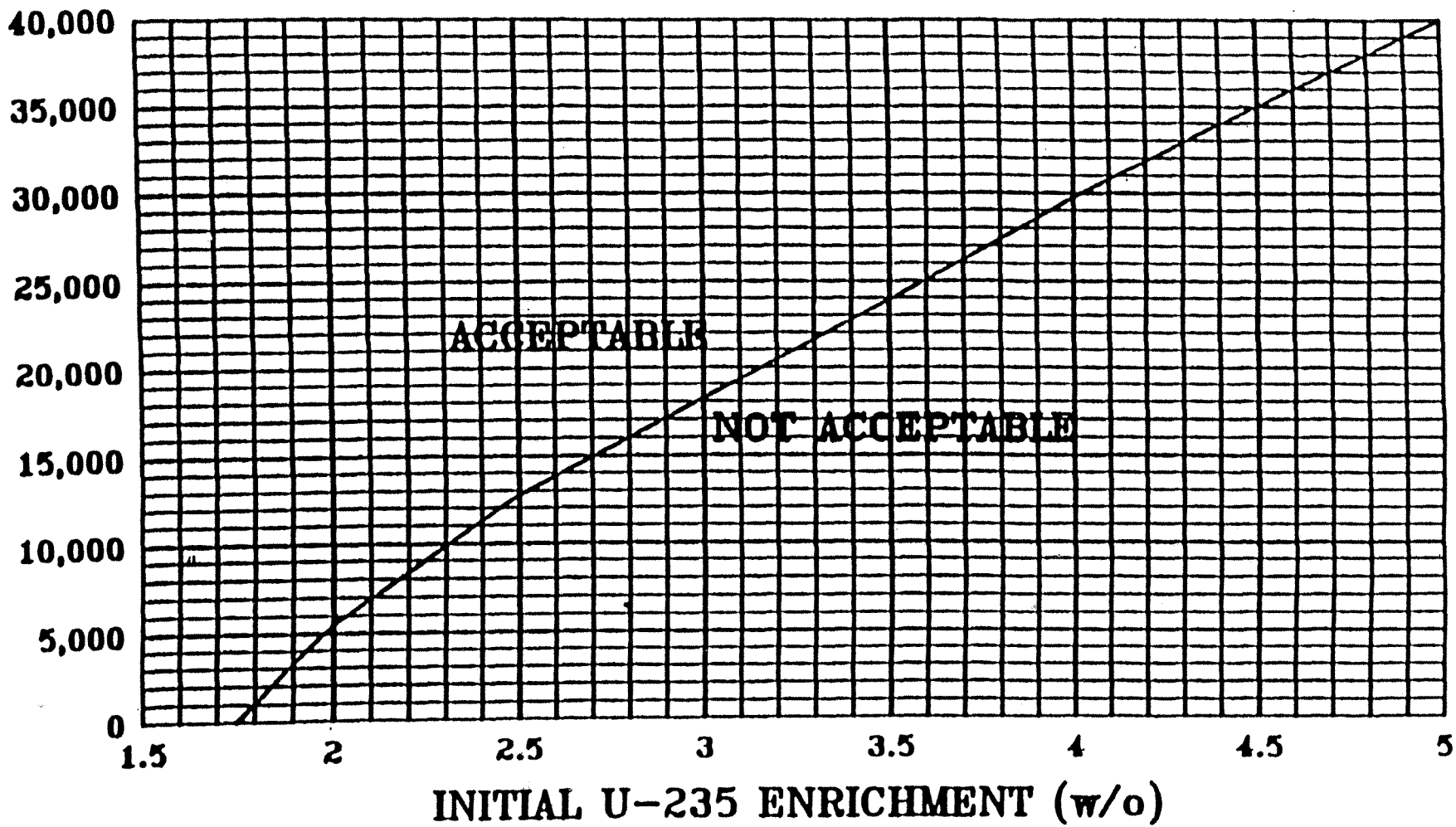
**INDIAN POINT 3 FSAR UPDATE**  
 MAXIMUM DENSITY SPENT FUEL  
 PIT (SPF) RACKS  
 REGIONS AND INDEXING  
 REV. 0 JUN 1999 | FIGURE NO. 9.5-2A



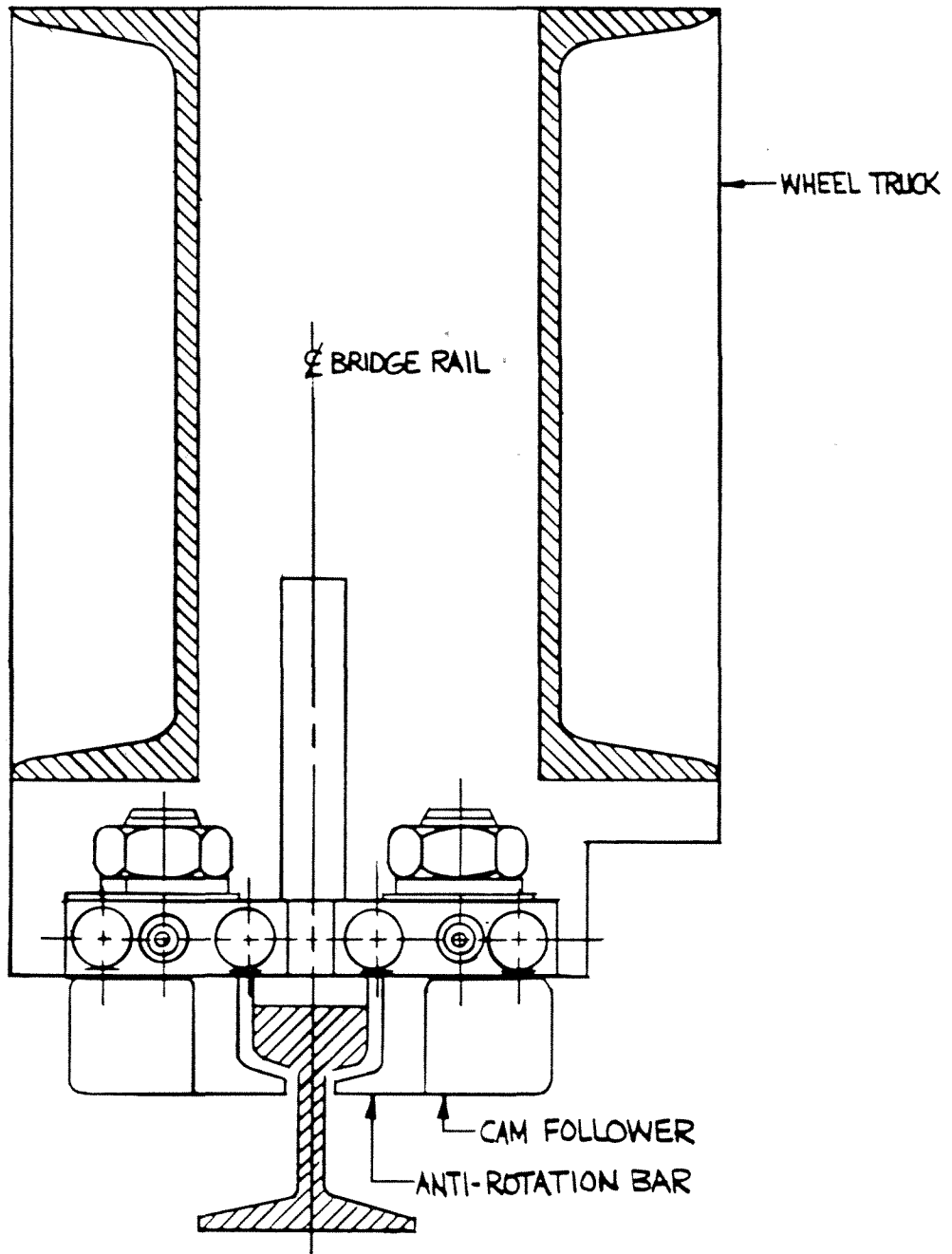
**Note: Fresh (unburned) fuel is defined as fuel with a burnup of 0 MWD/MTU.**

INDIAN POINT 3	FSAR UPDATE
SPENT FUEL PIT REGION I TYPE DEFINITION	
REV. 0 JUN 1999	FIGURE NO. 9.5-2B

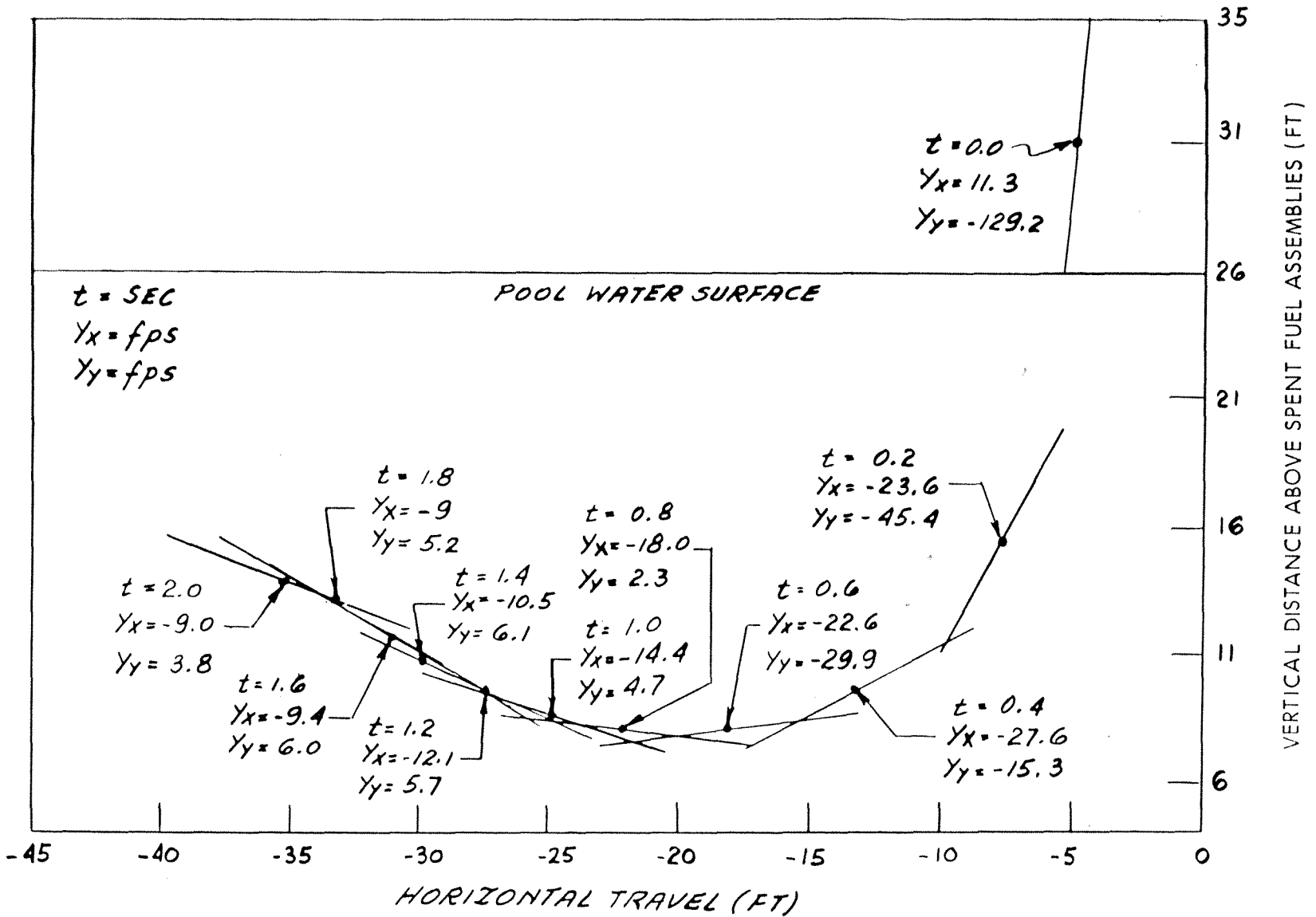
MINIMUM ASSY. DISCHARGE BURNUP (MWD/MTU)



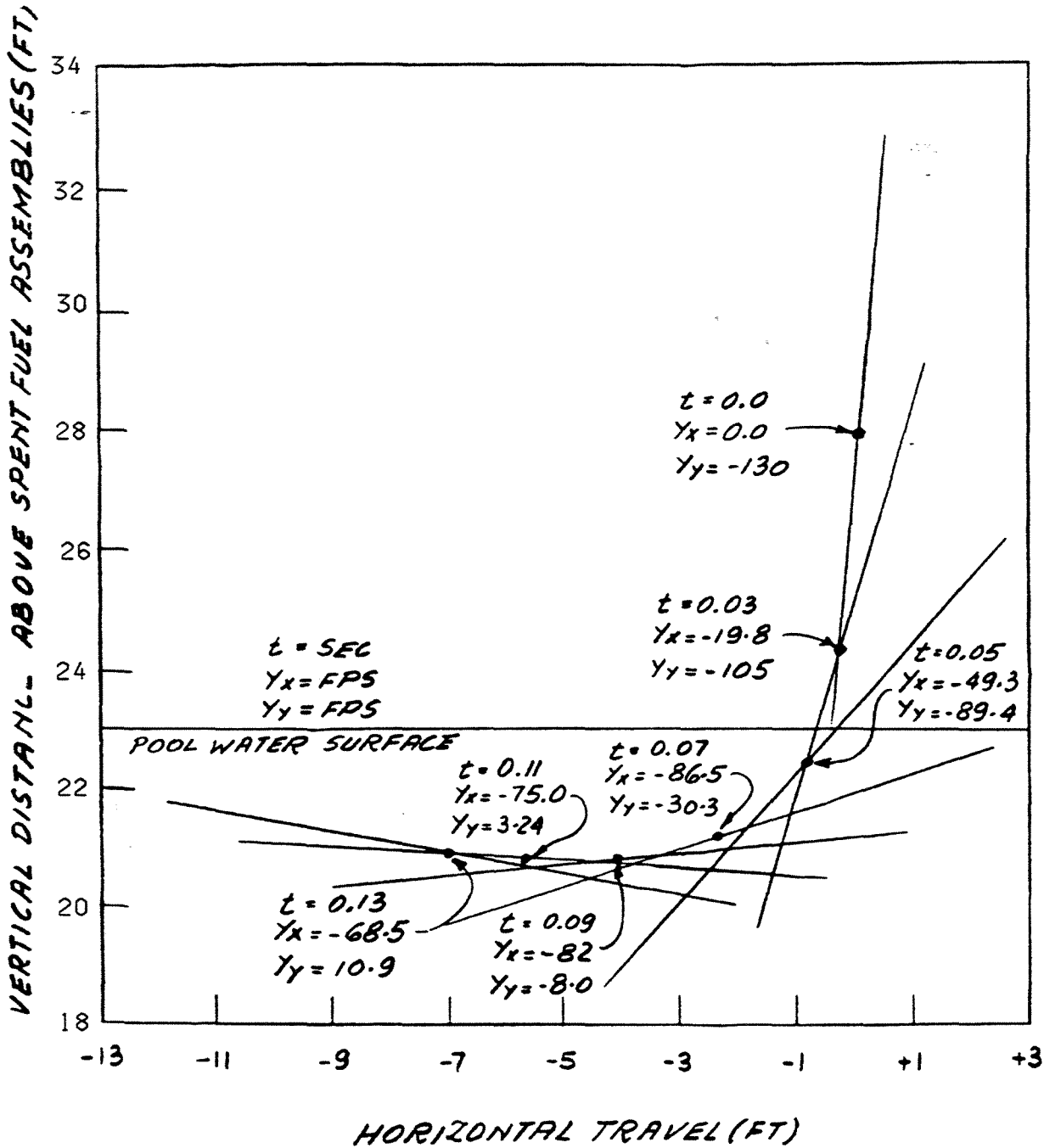
INDIAN POINT 3	FSAR UPDATE
REGION 2 BURNUP REQUIREMENTS FOR FUEL ASSEMBLY STORAGE IN SPENT FUEL PIT	
REV. 0 JUN 1999	FIGURE NO. 9.5-2C



INDIAN POINT 3	FSAR UPDATE
MANIPULATOR CRANE RESTRAINTS	
REV. 0	JULY, 1982
FIGURE NO.	9.5-3

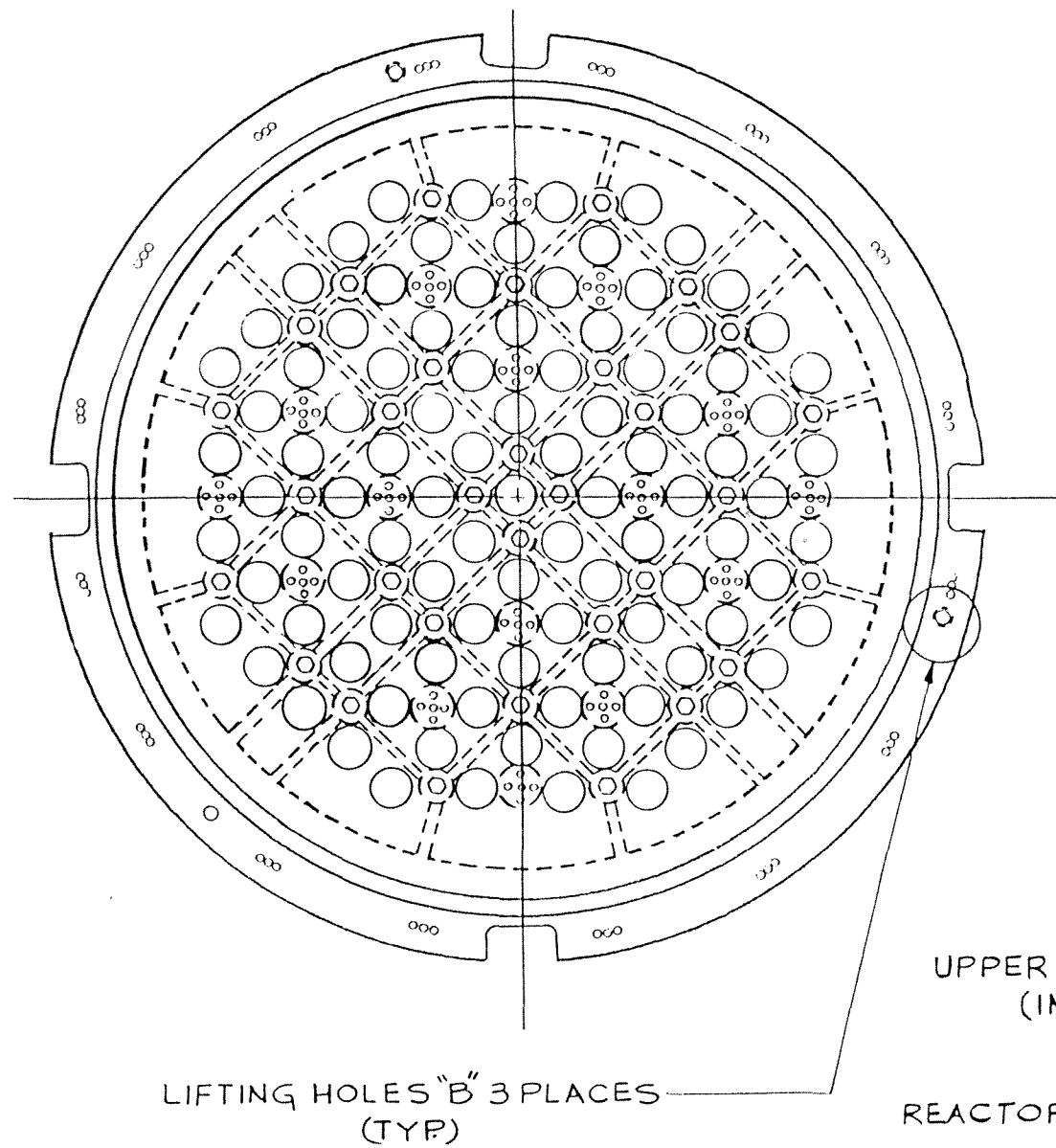


CALCULATED DECELERATION OF 130FPS WOOD PLANK WHEN INITIAL VELOCITY AND MISSILE AXIS ARE ALIGNED, 5° FROM VERTICAL

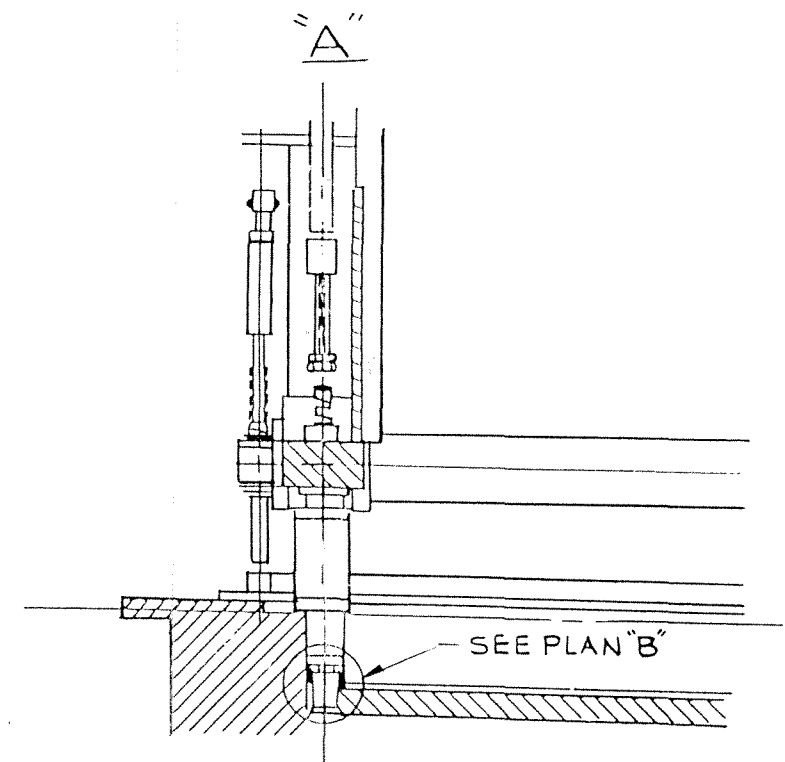
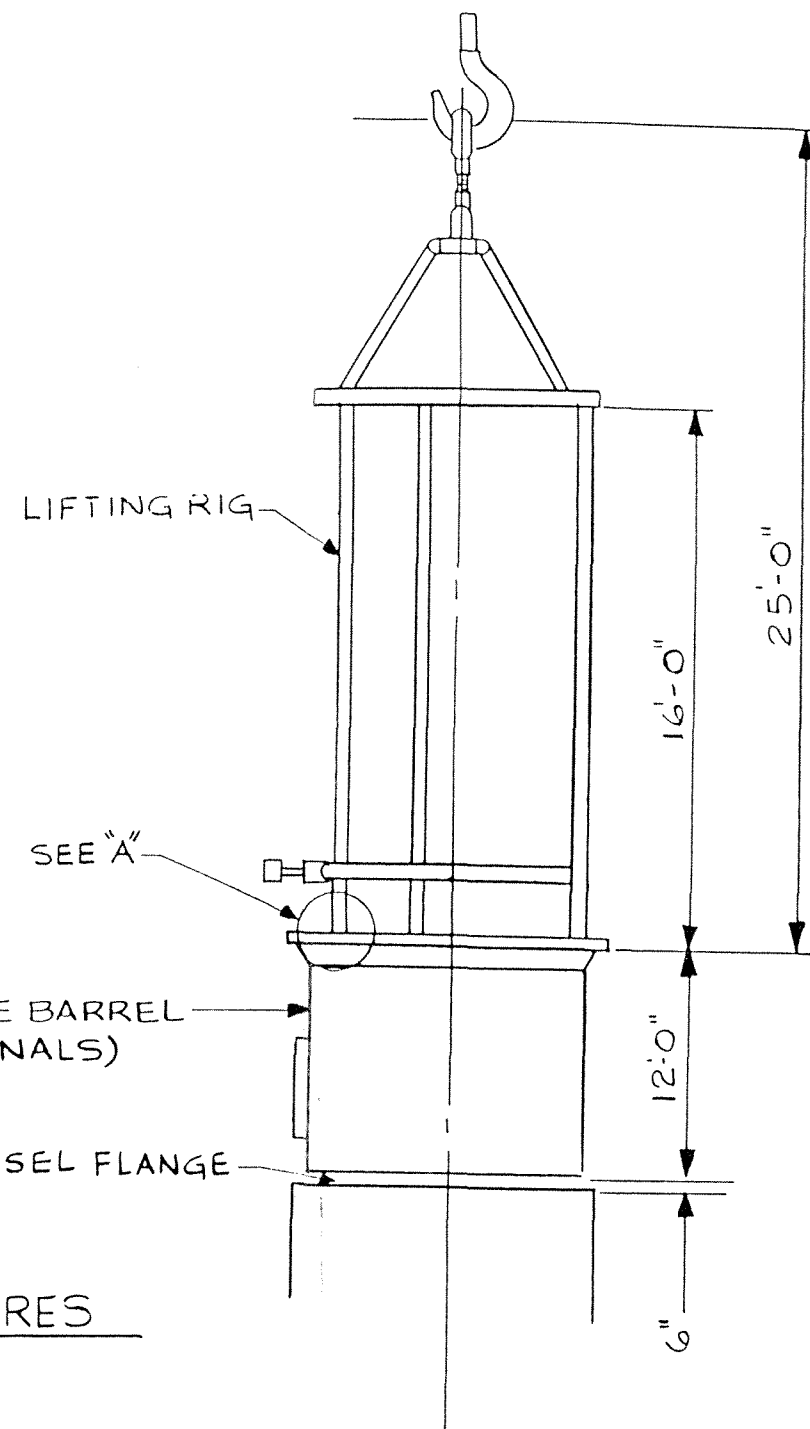


**CALCULATED DECELERATION OF 130 FPS WOOD PLANK WHEN INITIAL VELOCITY AND MISSILE AXIS ARE MISALIGNED BY 5°**

INDIAN POINT 3 FSAR UPDATE	
CALCULATED DECELERATION OF 130 FPS WOOD PLANK (MISALIGNED)	
REV. 1 JUN 2000	FIGURE 9.5-5



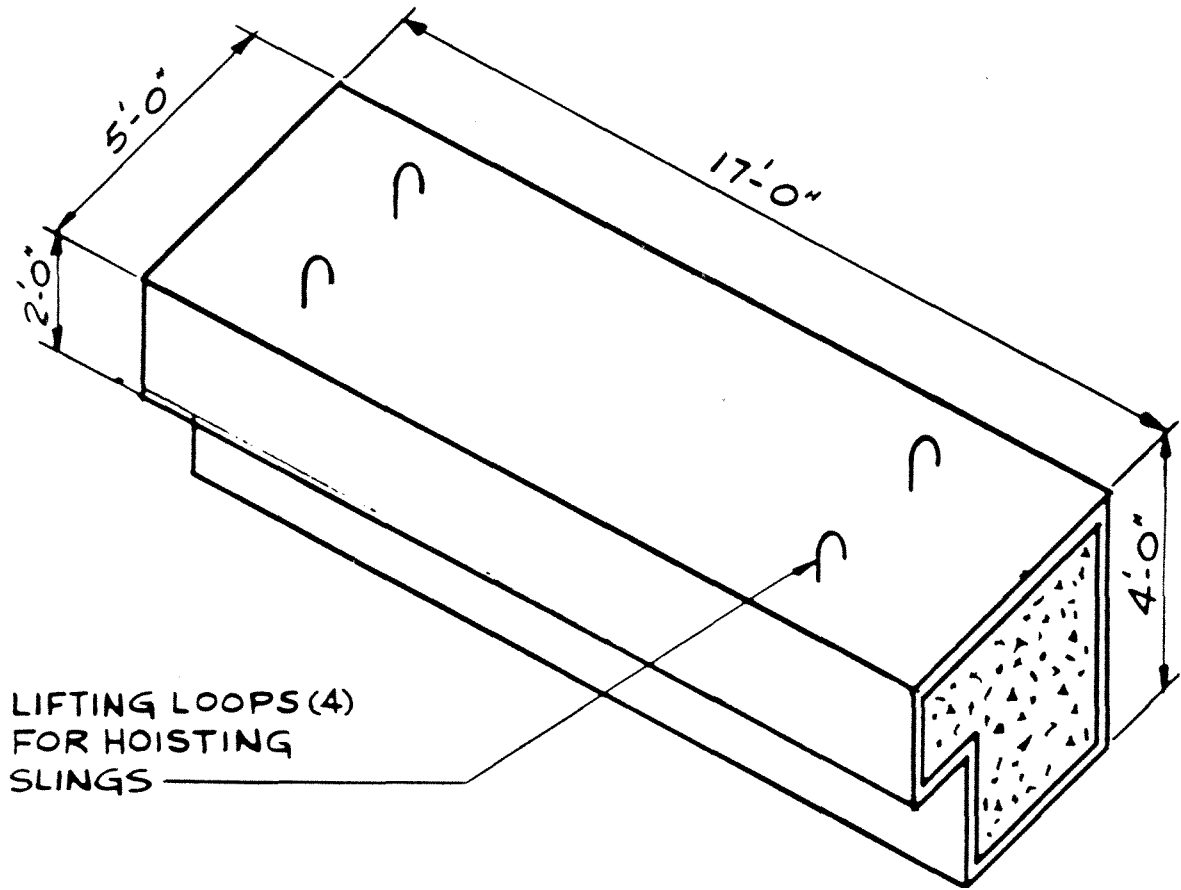
PLAN VIEW OF UPPER CORE SUPPORT STRUCTURES



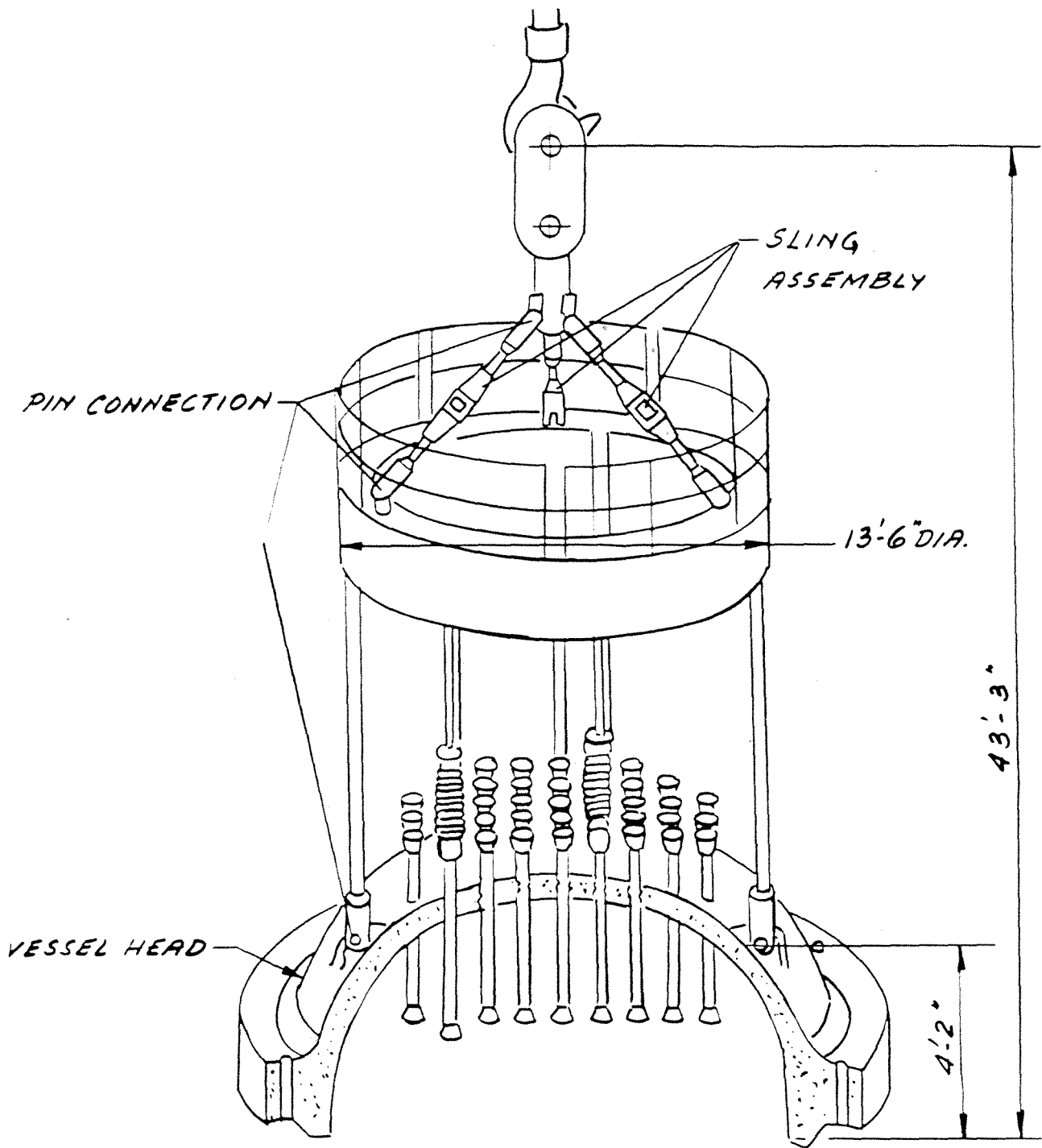
UPPER CORE BARREL HANDLING FIXTURE

INDIAN POINT 3		FSAR UPDATE
UPPER CORE SUPPORT AND HANDLING FIXTURE		
REV. 0	JULY, 1982	FIGURE NO. 9.5-6





INDIAN POINT 3		FSAR UPDATE	
MISSILE SHIELD STRUCTURE			
REV. 0	JULY, 1982	FIGURE NO.	9.5-7



INDIAN POINT 3	FSAR UPDATE
REACTOR VESSEL HEAD LIFTING DEVICE	
REV. 0	JULY, 1982   FIGURE NO. 9.5-8