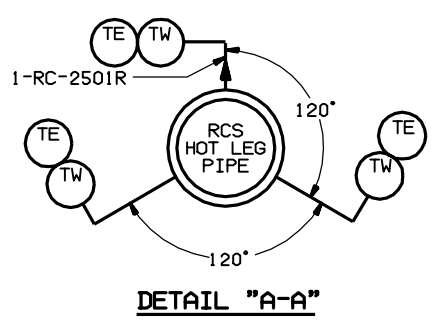


NOTE:
 FOR GENERAL NOTES, REFERENCES, REFERENCE DRAWINGS AND LEGENDS SEE DWG. 9321-F-27473.

LEGEND:
 ○ SEISMIC CLASSIFICATION
 ▭ INDICATES THERMAL SLEEVE

REF. DWG.:
 ISI-27383 - INSERVICE INSPECTION FOR REACTOR COOLANT SYSTEM

THIS IS A COMPUTER AIDED DESIGN DRAWING. A RECORD OF THE REVISIONS TO THIS DOCUMENT WITH APPROVAL INITIALS/SIGNATURES, IS MAINTAINED IN THE FILES OF ENTERTY NUCLEAR NORTHWEST.
 REDRAWN FROM © DWG. 685J413



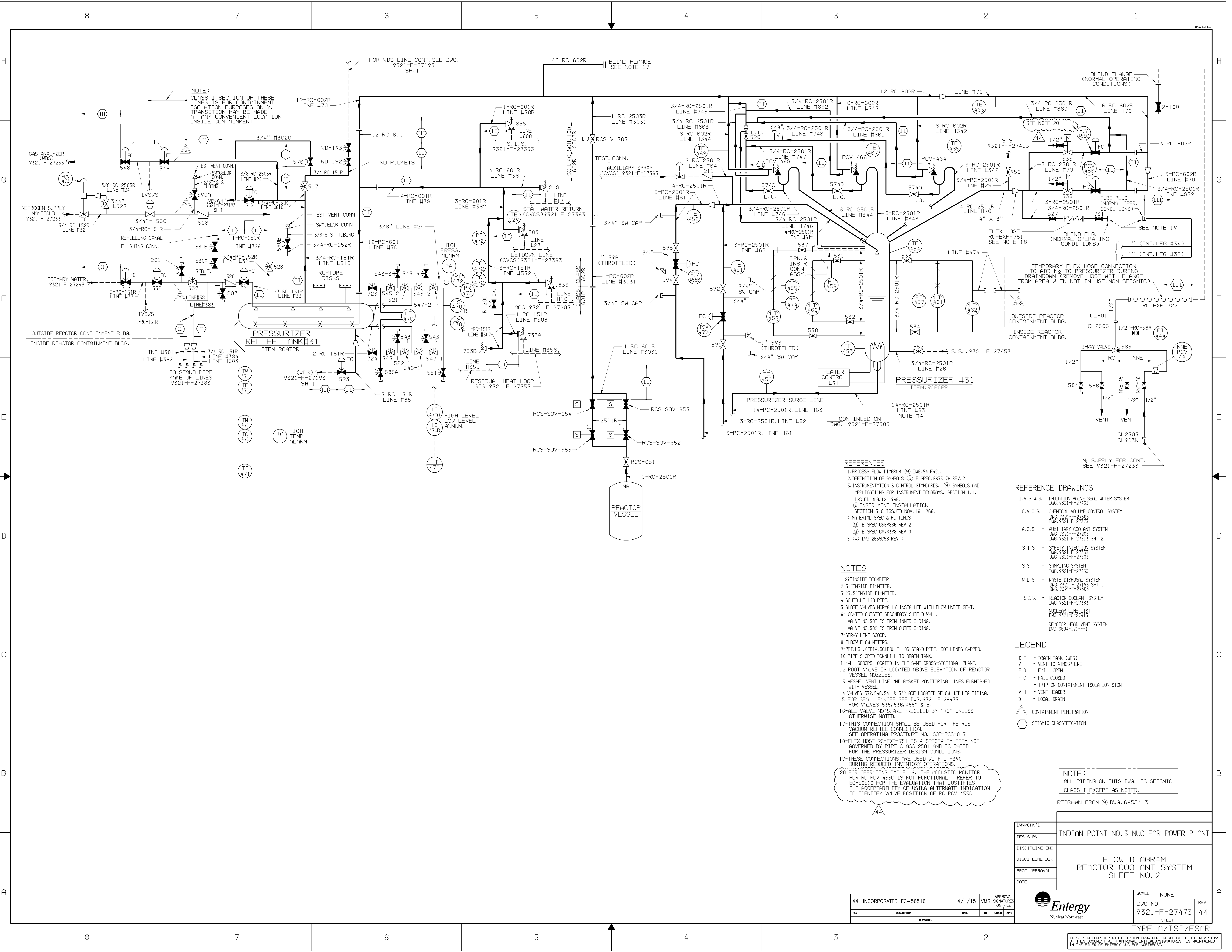
REV NO	DATE	DESCRIPTION	BY	CHK	DES	APP	PROJ MGR
27	8/25/01	AS BUILT PER DCP 00-3-010 RC	VR	JF	JM	LC	FR
26	8/5/00	AS BUILT PER DCR 100157124	JF	LM	JM	-	REB
25	1/13/01	AS BUILT PER DCR 100028575.	PH	ED	REB	BY	AE
24	1/13/01	AS BUILT PER MOD 93-03-085RCS.	PH	ED	REB	-	-
23	1/10/02	AS BUILT PER MOD 90-03-011RCS & DCR 100028276.	TD	REB	-	AE	-
22	8/30/00	AS BUILT PER IP3 TECH. SERV. HD&D-86.	PH	REB	-	AE	-

INDIAN POINT NO. 3 NUCLEAR POWER PLANT

FLOW DIAGRAM REACTOR COOLANT SYSTEM SHEET NO. 1

SCALE: NONE
 DWG NO: 9321-F-27383
 SHEET: 28

Entergy
 Nuclear Northeast



NOTE:
CLASS I SECTION OF THESE
LINES IS FOR CONTAINMENT
ISOLATION PURPOSES ONLY.
TRANSITION MAY BE MADE
AT ANY CONVENIENT LOCATION
INSIDE CONTAINMENT

PRESSURIZER
RELIEF TANK #31
ITEM:RCATPR1

- REFERENCES**
1. PROCESS FLOW DIAGRAM (PFD) DWG. 541F421.
 2. DEFINITION OF SYMBOLS (D.S.) E. SPEC. 6675176 REV. 2
 3. INSTRUMENTATION & CONTROL STANDARDS. (I.C.S.) SYMBOLS AND APPLICATIONS FOR INSTRUMENT DIAGRAMS, SECTION 1.1. ISSUED AUG. 12, 1966.
 4. MATERIAL SPEC. & FITTINGS (M.S.F.) E. SPEC. 6569866 REV. 2.
 5. (I.C.S.) E. SPEC. 6676398 REV. 0.
 6. (I.C.S.) DWG. 2655C58 REV. 4.

- NOTES**
- 1-2" INSIDE DIAMETER
 - 3-3" INSIDE DIAMETER
 - 27-5" INSIDE DIAMETER
 - SCHEDULE 140 PIPE
 - GLOBE VALVES NORMALLY INSTALLED WITH FLOW UNDER SEAT.
 - LOCATED OUTSIDE SECONDARY SHIELD WALL.
 - VALVE NO. 501 IS FROM INNER O-RING.
 - VALVE NO. 502 IS FROM OUTER O-RING.
 - 7-SPRAY LINE SCOOP
 - ELBOW FLOW METERS
 - 7-FT. LG., 6" DIA. SCHEDULE 10S STAND PIPE, BOTH ENDS CAPPED.
 - 10-PIPE SLOPED DOWNHILL TO DRAIN TANK.
 - 11-ALL SCOOPS LOCATED IN THE SAME CROSS-SECTIONAL PLANE.
 - 12-ROOT VALVE IS LOCATED ABOVE ELEVATION OF REACTOR VESSEL NOZZLES.
 - 13-VESSEL VENT LINE AND GASKET MONITORING LINES FURNISHED WITH VESSEL.
 - 14-VALVES 539, 540, 541 & 542 ARE LOCATED BELOW HOT LEG PIPING.
 - 15-FOR SEAL LEAKOFF SEE DWG. 9321-F-26473 FOR VALVES 535, 536, 455A & B.
 - 16-ALL VALVE NO.'S ARE PRECEDED BY "RC" UNLESS OTHERWISE NOTED.
 - 17-THIS CONNECTION SHALL BE USED FOR THE RCS VACUUM REFILL CONNECTION. SEE OPERATING PROCEDURE NO. SOP-RCS-017
 - 18-FLEX HOSE RC-EXP-751 IS A SPECIALITY ITEM NOT GOVERNED BY PIPE CLASS 2501 AND IS RATED FOR THE PRESSURIZER DESIGN CONDITIONS.
 - 19-THese CONNECTIONS ARE USED WITH LT-390 DURING REDUCED INVENTORY OPERATIONS.
 - 20-FOR OPERATING CYCLE 19, THE ACOUSTIC MONITOR FOR RC-PCV-455C IS NOT FUNCTIONAL. REFER TO EC-56516 FOR THE EVALUATION THAT JUSTIFIES THE ACCEPTABILITY OF USING ALTERNATE INDICATION TO IDENTIFY VALVE POSITION OF RC-PCV-455C

- REFERENCE DRAWINGS**
- I.V.S.W.S. - ISOLATION VALVE SEAL WATER SYSTEM DWG. 9321-F-27485
 - C.V.C.S. - CHEMICAL VOLUME CONTROL SYSTEM DWG. 9321-F-27363
 - A.C.S. - AUXILIARY COOLANT SYSTEM DWG. 9321-F-27205
 - S.I.S. - SAFETY INJECTION SYSTEM DWG. 9321-F-27353
 - S.S. - SAMPLING SYSTEM DWG. 9321-F-27453
 - W.D.S. - WASTE DISPOSAL SYSTEM DWG. 9321-F-27303
 - R.C.S. - REACTOR COOLANT SYSTEM DWG. 9321-F-27385
 - NUCLEAR LINE LIST DWG. 9321-C-27413
 - REACTOR HEAD VENT SYSTEM DWG. 6604-171-F-1

- LEGEND**
- D T - DRAIN TANK (WDS)
 - V - VENT TO ATMOSPHERE
 - F O - FAIL OPEN
 - F C - FAIL CLOSED
 - T - TRIP ON CONTAINMENT ISOLATION SIGN
 - V H - VENT HEADER
 - D - LOCAL DRAIN
 - △ - CONTAINMENT PENETRATION
 - - SEISMIC CLASSIFICATION

NOTE:
ALL PIPING ON THIS DWG. IS SEISMIC CLASS I EXCEPT AS NOTED.

REDRAWN FROM (Q) DWG. 685J413

DWG/CHK'D	INDIAN POINT NO. 3 NUCLEAR POWER PLANT
DES SUPV	
DISCIPLINE ENG	
DISCIPLINE DIR	
PROJ APPROVAL	
DATE	

FLOW DIAGRAM REACTOR COOLANT SYSTEM SHEET NO. 2	
SCALE NONE	REV 44
DWG NO 9321-F-27473	SHEET

REV	DESCRIPTION	DATE	BY	CHKD	APP.
44	INCORPORATED EC-56516	4/1/15	VWR		APPROVAL SIGNATURES ON FILE



THIS IS A COMPUTER AIDED DESIGN DRAWING. A RECORD OF THE REVISIONS OF THIS DOCUMENT WITH APPROVAL INITIALS/SIGNATURES, IS MAINTAINED IN THE FILES OF ENTERGY NUCLEAR NORTHEAST.

TYPE A/ISI/FSAR