

REGULATORY INFORMATION DISTRIBUTION SYSTEM (RIDS)

MA/1

ACCESSION NBR: 8007290722 DOC. DATE: 80/07/21 NOTARIZED: NO DOCKET #
 FACIL: STN-50-528 Palo Verde Nuclear Station, Unit 1, Arizona Public 05000528
 STN-50-529 Palo Verde Nuclear Station, Unit 2, Arizona Public 05000529
 AUTH. NAME AUTHOR AFFILIATION
 VAN BRUNT, E.E. Arizona Public Service Co.
 RECIP. NAME RECIPIENT AFFILIATION

SUBJECT: Final deficiency report re inadequate embedment of anchor bolts for seal tables. Caused by omission of anchor bolt extension in design drawings. Design change will be implemented to reflect proper anchoring in concrete.

DISTRIBUTION CODE: B019S COPIES RECEIVED: LTR 1 ENCL 1 SIZE: 4
 TITLE: Construction Deficiency Report (10CFR50.55E)

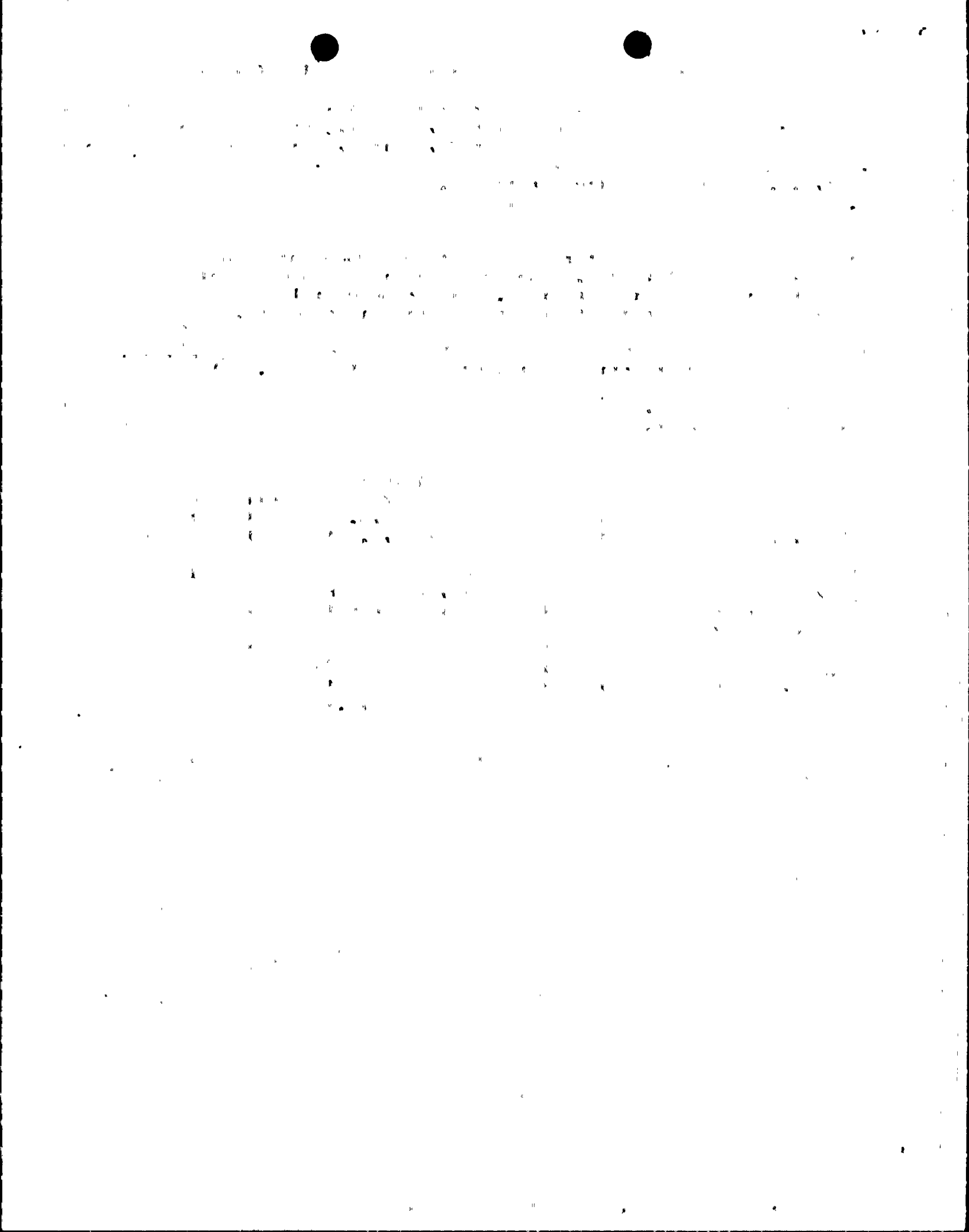
NOTES: Standardized Plant. 05000528
 Standardized Plant. 05000529

ACTION:	RECIPIENT	COPIES		RECIPIENT	COPIES	
	ID CODE/NAME	LTR	ENCL		ID CODE/NAME	LTR
ACTION:	A/D LICENSNG 21	1	1	SCHWENCER, A. 15	1	1
	LEE, J. 20	1	1	KERRIGAN, J. 14	1	1
INTERNAL:	AD/RCI/IE	1	1	AEOD	1	1
	D/DIR HUM FAC S	1	1	DIR, HUM FAC SFY	1	1
	EDO & STAFF 07	1	1	EQUIP QUAL BR16	1	1
	FIELD COOR/IE13	1	1	I&E 05	2	2
	LIC QUAL BR	1	1	MPA 08	1	1
	NRC PDR 02	1	1	OELD 23	1	1
	PROC/TST REV BR	1	1	QA BR 10	1	1
	REG FILE 01	1	1	RUTHERFORD, W. IE	1	1
STANDRDS DEV 11	1	1				
EXTERNAL:	ACRS 24	16	16	LPDR 03	1	1
	NSIC 04	1	1			

JUL 30 1980



TOTAL NUMBER OF COPIES REQUIRED: LTR 40 ENCL 40



ARIZONA



PUBLIC SERVICE COMPANY

P. O. BOX 21666 • PHOENIX, ARIZONA 85036

July 21, 1980
ANPP-15970-JEC/BSK

8/20/80

U. S. Nuclear Regulatory Commission
Region V
Walnut Creek Plaza - Suite 202
1990 North California Boulevard
Walnut Creek, California 94596

Attention: Mr. G. S. Spencer, Chief
Reactor Construction and
Engineering Support Branch

Subject: A 59.55(e) Reportable Condition Relating to
Inadequate Embedment of Anchor Bolts for
Units #1 and #2 Seal Tables
File: 80-019-026

Reference: Telephone Conversation between G. Hernandez
and B. S. Kaplan on June 20, 1980 (DER 80-16)

Dear Sir:

Attached, is our final written report of the reportable deficiency,
under 10CFR50.55(e), referenced above.

Very truly yours,

E. E. Van Brunt, Jr.
APS Vice President
Nuclear Projects
ANPP Project Director

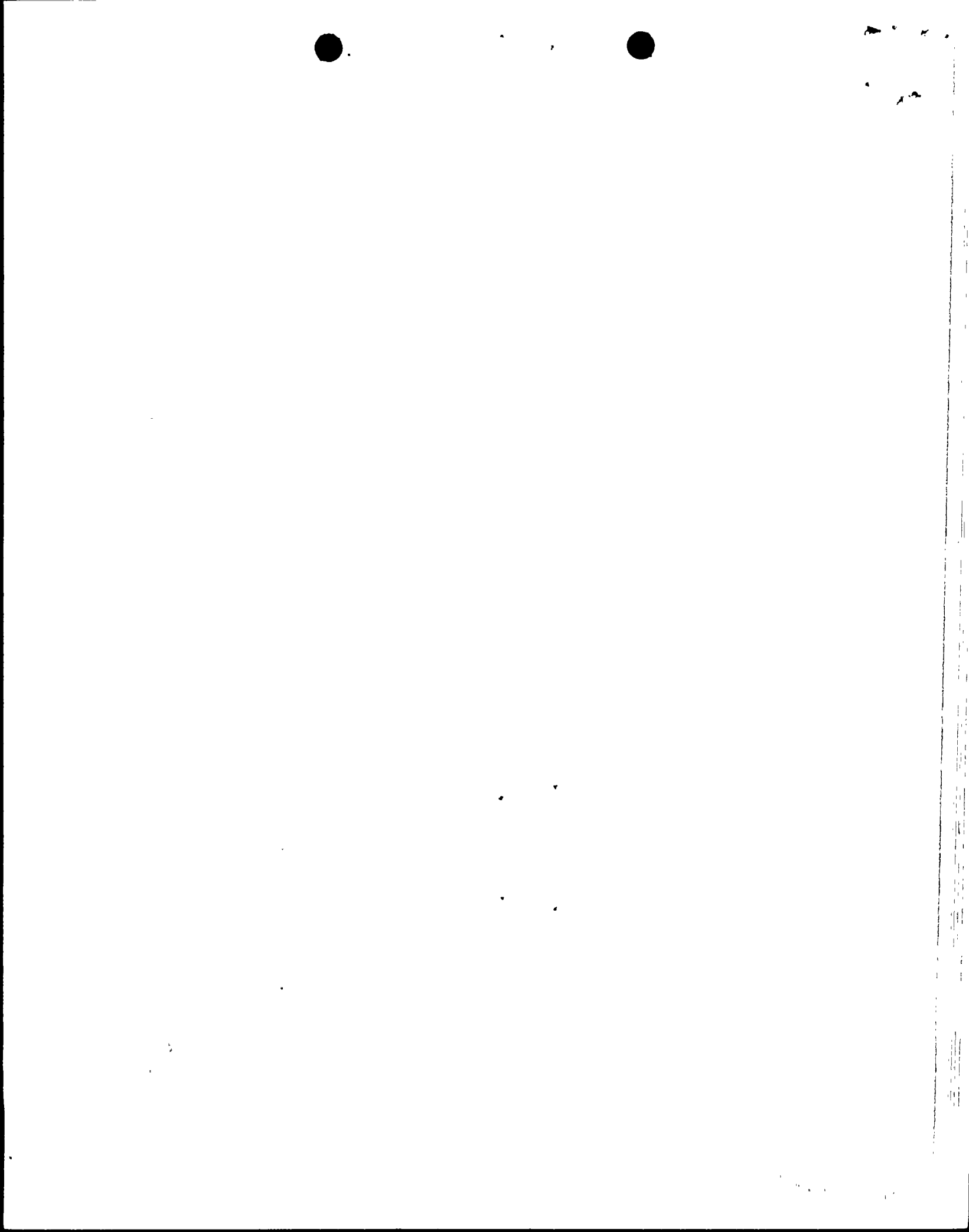
EEVBJr/JEC:skc

Attachment

8019
S
1/1

8007290722

5



U. S. Nuclear Regulatory Commission
Attention: Mr. G. S. Spencer, Chief
ANPP-15970-JEC/BSK
July 21, 1980
Page 2

cc: Victor Stello, Jr., Director
Office of Inspection and Enforcement
U. S. Nuclear Regulatory Commission
Washington, D. C. 20555

A. C. Gehr
Snell & Wilmer

R. L. Robb
D. B. Fasnacht
W. E. Ide
B. S. Kaplan
A. C. Rogers
J. M. Allen
J. A. Brand
W. H. Wilson
W. G. Bingham
W. J. Stubblefield
J. E. Bashore
R. W. Welcher
D. R. Hawkinson



11
2

11
2

FINAL REPORT
REPORTABLE DEFICIENCY 50.55(e)
ARIZONA PUBLIC SERVICE COMPANY (APS)
PVNGS UNITS #1 AND #2

I Description of Deficiency

The in-core instrumentation (ICI) seal table is supported by a 3'-0" thick reinforced concrete slab. The top 9" of this slab, however, is merely unreinforced filler concrete. The anchor bolts for the (ICI) seal table were intended by design to extend down into the reinforced portion of the slab in order to provide proper embedment. This detail was not correctly translated to the drawing. Subsequent increase in design loads from the seal table supplier further compounded the condition. This condition was discovered during a final check and review of the civil/structural calculations.

II Analysis of Safety Implications

If this condition is not corrected, it is possible that the seal table may become dislodged during a seismic event or due to the pressure load from a LOCA in the reactor cavity. If the seal table was dislodged during a seismic event, it may cause leakage from the reactor coolant pressure boundary into the containment. If the seal table was dislodged as a result of a LOCA in the reactor cavity, it could cause additional leakage from the reactor coolant pressure boundary into the containment. However, it is estimated that in both cases this leakage would be quite small, but must still be considered significant to safety. A detailed analysis of the possible leakage will not be performed since the condition is being corrected to meet design calculation requirements.

This condition is considered a reportable deficiency based on two considerations:

1. If the condition were not detected and corrected, it is possible that it would be significant to safety.
2. The detail causing the condition was not detected during the initial review.



10
11

12
13

III Corrective Action

A design change will be implemented so that the seal table is adequately anchored in the reinforced concrete. This design will include, as a minimum, core drilling and inserting dowels into the reinforced concrete. The design will meet all Seismic Category I requirements, as well as the pressure load from a postulated LOCA in the reactor cavity. All engineering personnel responsible for the design have been instructed to carefully check to assure that the design is implemented correctly on the drawings.



11