

ACCELERATED DISTRIBUTION DEMONSTRATION SYSTEM

REGULATORY INFORMATION DISTRIBUTION SYSTEM (RIDS)

ACCESSION NBR: 9203040066 DOC. DATE: 92/02/28 NOTARIZED: NO DOCKET #
 FACIL: 50-397 WPPSS Nuclear Project, Unit 2, Washington Public Power 05000397
 AUTH. NAME AUTHOR AFFILIATION
 SORENSEN, G.C. Washington Public Power Supply System
 RECIP. NAME RECIPIENT AFFILIATION
 Document Control Branch (Document Control Desk)

SUBJECT: Forwards fitness for duty program performance data for Jul-Dec 1991.

DISTRIBUTION CODE: A021D COPIES RECEIVED: LTR 1 ENCL 1 SIZE: 11
 TITLE: "Semiannual Fitness for Duty Program Performance Rept/Data" 10CFR26.7

NOTES:

	RECIPIENT ID CODE/NAME	COPIES LTTR ENCL	RECIPIENT ID CODE/NAME	COPIES LTTR ENCL
	PD5 LA	1 1	PD5 PD	1 1
	ENG, P.L.	1 1		
INTERNAL:	ACRS	1 1	NRR/DRIS/RSGB	1 1
	NUDOCS-ABSTRACT	1 1	REG FILE 01	1 1
	RGN5 . 02	1 1		
EXTERNAL:	NRC PDR	1 1	NSIC	1 1

NOTE TO ALL "RIDS" RECIPIENTS:

PLEASE HELP US TO REDUCE WASTE! CONTACT THE DOCUMENT CONTROL DESK,
 ROOM P1-37 (EXT. 20079) TO ELIMINATE YOUR NAME FROM DISTRIBUTION
 LISTS FOR DOCUMENTS YOU DON'T NEED!

TOTAL NUMBER OF COPIES REQUIRED: LTTR 10 ENCL 10

MAY

Docket No. 50-397

February 28, 1992
G02-92-055

U.S. Nuclear Regulatory Commission
Document Control Desk
Washington, D.C. 20555

Subject: **NUCLEAR PLANT NO. 2**
PERFORMANCE DATA REPORT - JULY 1 TO DECEMBER 31, 1991

Enclosed is the Supply System's Performance Data - Personnel Subject to 10CFR26 (Enclosure 1) Report for the period July 1 - December 31, 1991 as required by 10CFR26.71(d).

For the calendar year of 1991, the average random pool size was 1725 individuals. A total of 1770 random chemical drug tests were conducted, which equates to 102.6% of the workforce and compliance with 10CFR26.24(a)(2). Charts and graphs that summarize the Program data are attached to the report.

Questions regarding the information in this report should be directed to M.M. (Matt) Monopoli, Manager, Support Services, at (509) 377-8473.

Very truly yours,



G.C. Sorensen, Manager
Regulatory Programs (280)

GCS:vs
Enclosures (1)

cc: Mr. R. C. Sorensen, NRC Resident Inspector
Mr. J. B. Martin, NRC - Region V
Mr. N. S. Reynolds, Winston and Strawn
Mr. F. Wenslawski, NRC - Region V

030060

9203040066 920228
PDR ADOCK 05000397
R PDR

AD21 1/1

FITNESS FOR DUTY PROGRAM

Performance Data Personnel Subject to CFR 26

Washington Public Power Supply System
December 31, 1991
COMPANY
6 MONTHS ENDING
WNP-2
LOCATION
M.M. Monopoli, Manager, Support Services
(509) 377-8473
CONTACT NAME
PHONE (INCLUDE AREA CODE)
CUTOFFS: SCREEN/CONFIRMATION (ng/ml) ☐ APPENDIX A TO 10CFR 26

MARIJUANA	100 / 15	AMPHETAMINES	1000 / 15	_____ /
COCAINE	300 / 50	PHENCYCLIDINE	25 / 25	_____ /
OPIATES	300 / 300	ALCOHOL (% BAC)	.04%	_____ /

TESTING RESULTS	LICENSEE EMPLOYEES				LONG-TERM CONTRACTOR PERSONNEL		SHORT-TERM CONTRACTOR PERSONNEL	
AVERAGE NUMBER WITH UNESCORTED ACCESS	1695							
CATEGORIES	# TESTED	# POSITIVE	# REFERRED TO EAP	# ACCESS RESTORED	# TESTED	# POSITIVE	# TESTED	# POSITIVE
PRE-EMPLOYMENT	212	0			71	0	41	0
PRE-BADGING	11	0			1	0	1	1
PERIODIC	0	0			0	0	0	0
FOR CAUSE	14	0			0	0	0	0
POST ACCIDENT	0	0			0	0	0	0
RANDOM	749	4	3	3	89	0	6	0
FOLLOW-UP	15	0			0	0	0	0
OTHER								
TOTAL	1001	4	3	3	161	0	48	1

RANDOM TESTING PROGRAM RESULTS

INDIVIDUALS TESTED	1989		1990 Jan-June July-Dec		1991 Jan-June July-Dec		1992		1993	
# POSITIVE			2	1	2	4				
# NEGATIVE			934	812	924	840				
% POSITIVE			.0021%	.0012%	.0021%	.0047%				
GRAPH OF % POSITIVE	5									
	4									
	3									
	2									
	1									

CONFIRMED POSITIVE TESTS FOR SPECIFIC SUBSTANCES

Random

MARIJUANA						1				
COCAINE						3				
OPIATES										
AMPHETAMINES										
PHENCYCLIDINE										
ALCOHOL										

6/7/89

Management Actions taken by the Supply System during the current reporting period of July 1 to December 31, 1991 are as follows:

Denied Access to the Protected Area of WNP-2 for 14 (fourteen) days	4
Referrals to the EAP	3
Returned to work in the Protected Area of WNP-2	3
Resignation notice in progress as confirmation conducted and finalized	1

ATTACHMENT 1

Subject: Fitness For Duty Program
 Washington Public Power Supply System

Performance Summary:

Chart 1, Chemical Tests by Type. This chart shows the total number of tests administered by type for the reporting period June 1 - December 31, 1991.

Chart 2, Chemical Tests by Employee Type. This chart shows the total number of annual tests administered by the type of test.

Graph 1, Random Test Failures. This graph shows the total number of random test failures by substance for each of the 4 reporting periods.

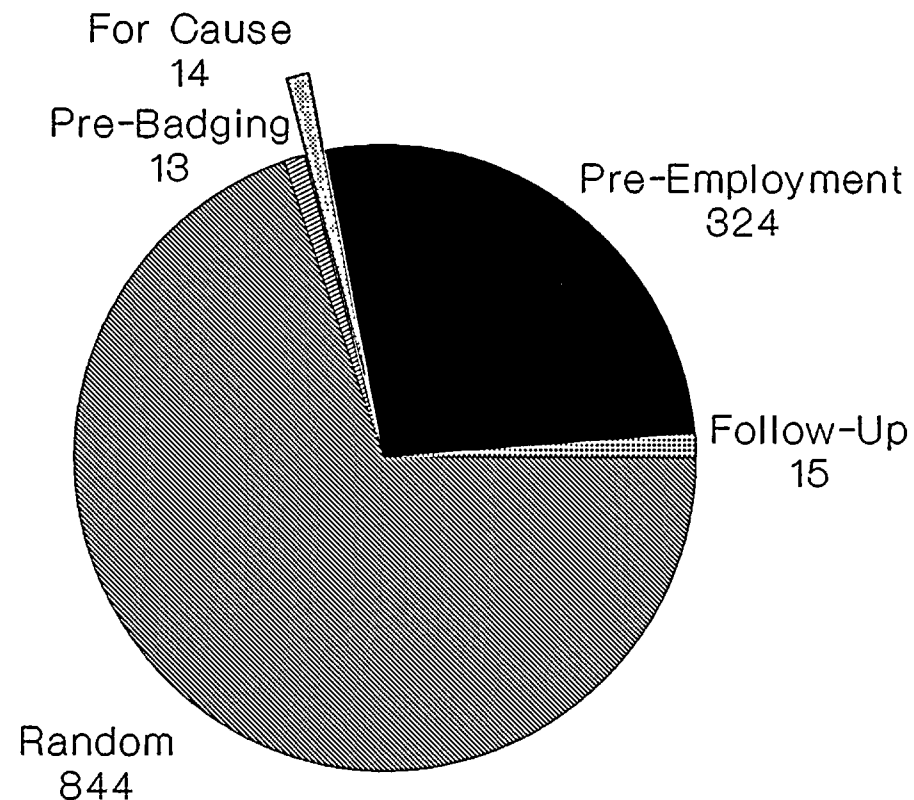
Graph 2, % of Times Selected. This graph shows percentage of random selections pulled from personnel available for all 161 runs through the end of this reporting period January 1 to December 31, 1991. The random selection is based on the unknown universe format.

Graph 3, % of Times Selected. Movement over Time - This graph shows the movement of the percentage of random selections curve over all 4 reporting periods beginning January 1, 1990 through December 31, 1991. The percentage of those participants selected 0 times, and available for all runs has dropped from 13.3% June 13, 1990 to 6.6% December 31, 1991.

Graph 4, Substance Test Failures - All Types. This graph shows the comparison of substance test failures by type for each of the 4 reporting periods, January 1, 1990 through December 31, 1991. Includes licensee, long-term contractors, and short-term contractors.

Supply System FFD Program

Chemical Tests By Type

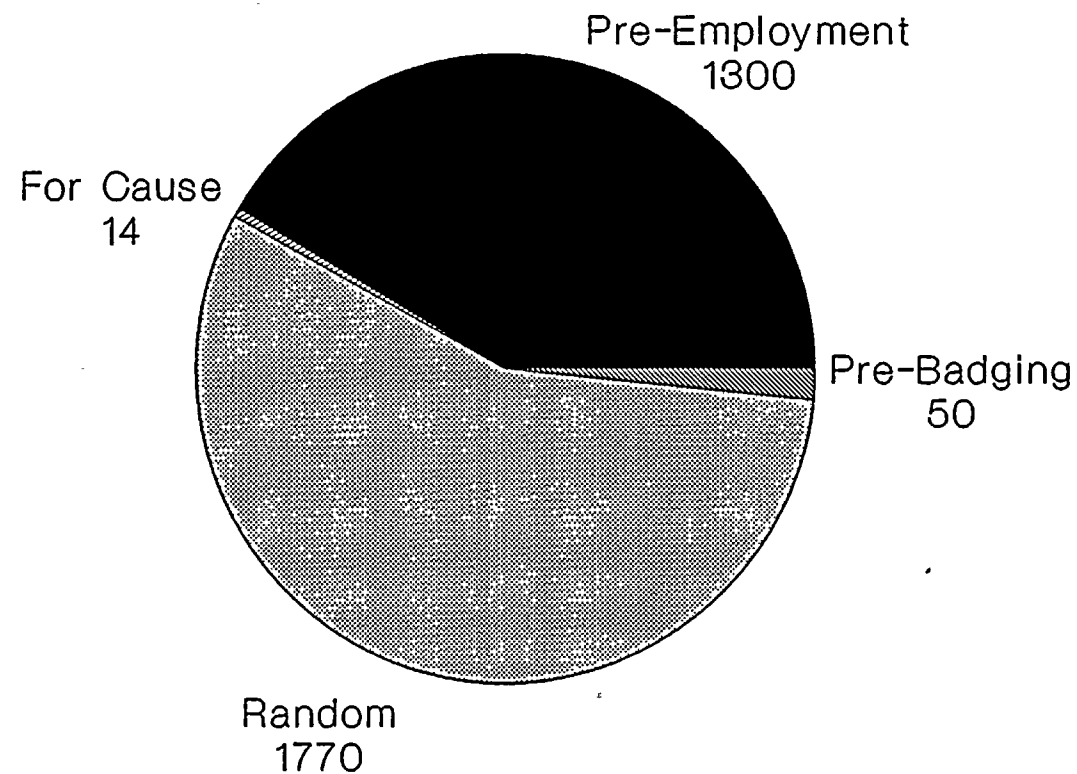


July - December 1991

CHART 1

Supply Sytem FFD Program

Chemical Tests by Type

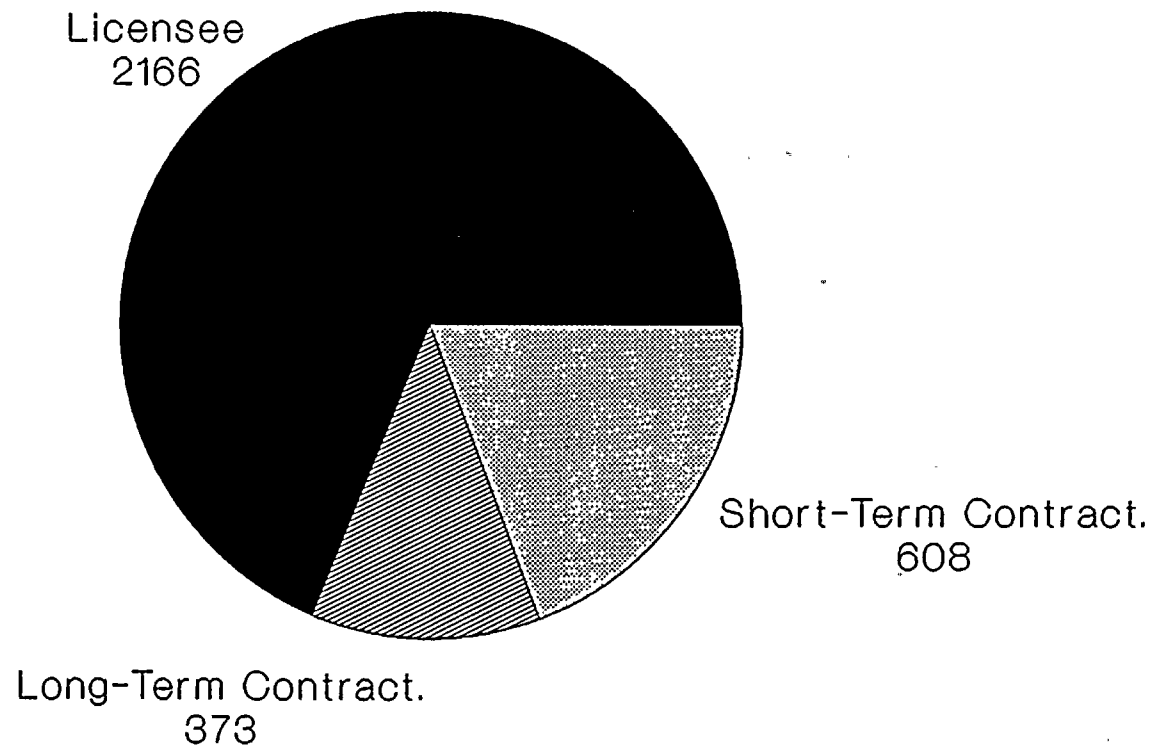


January 1 - December 31, 1991

CHART 2

Supply System FFD Program

Tests By Employee Type

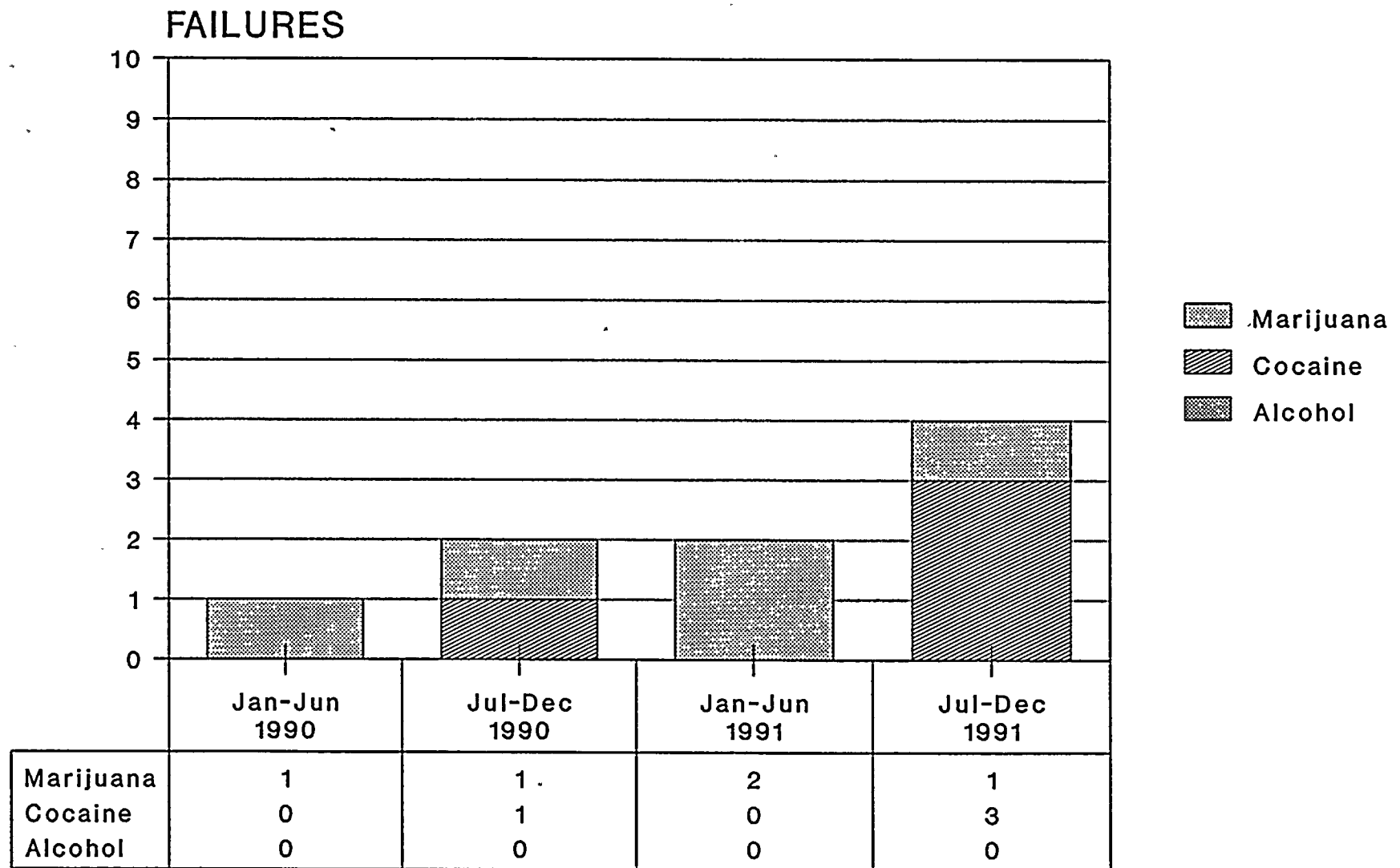


January 1 - December 31, 1991

CHART 3

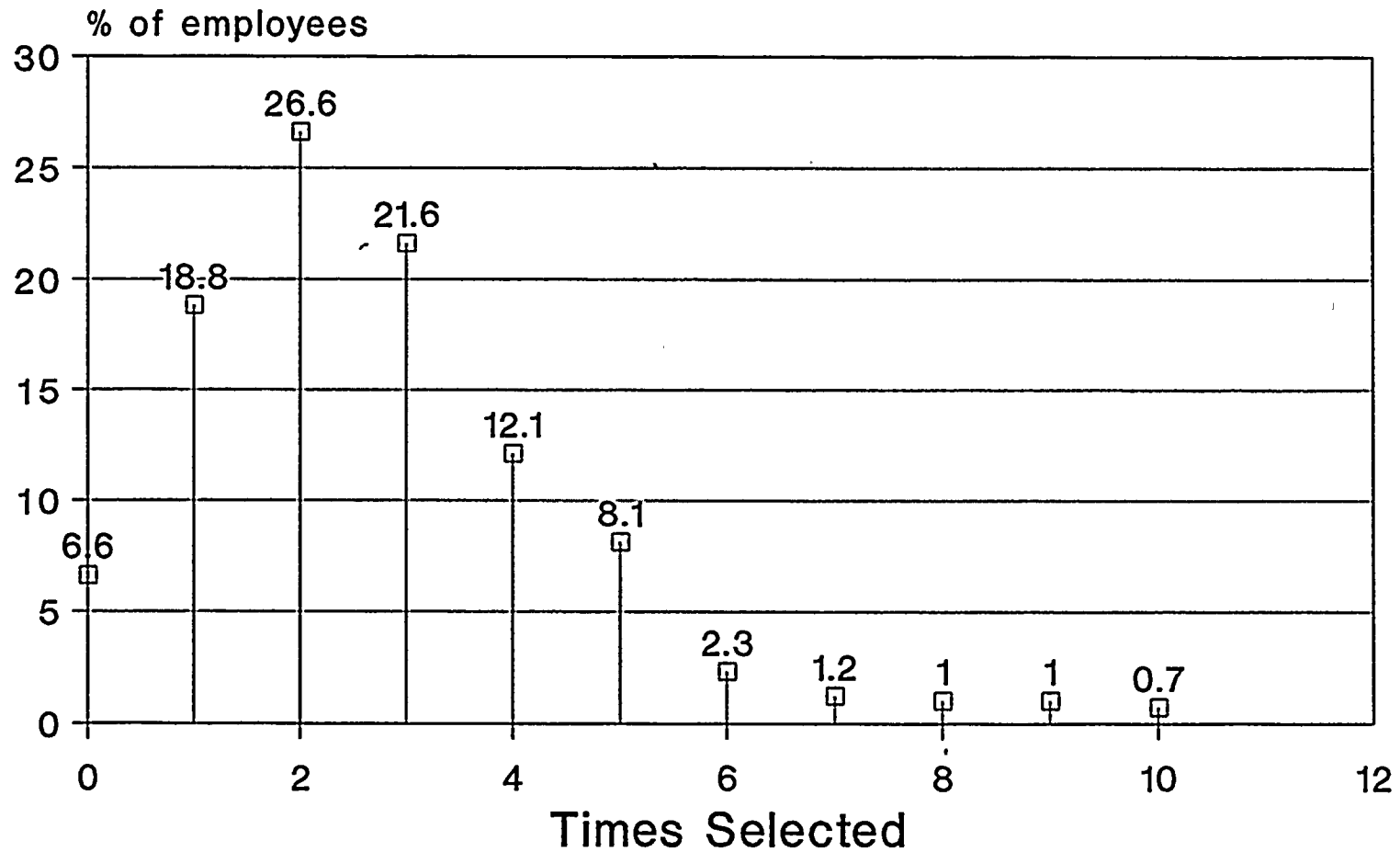
Random Test Failures

Reporting Periods 1990-1991



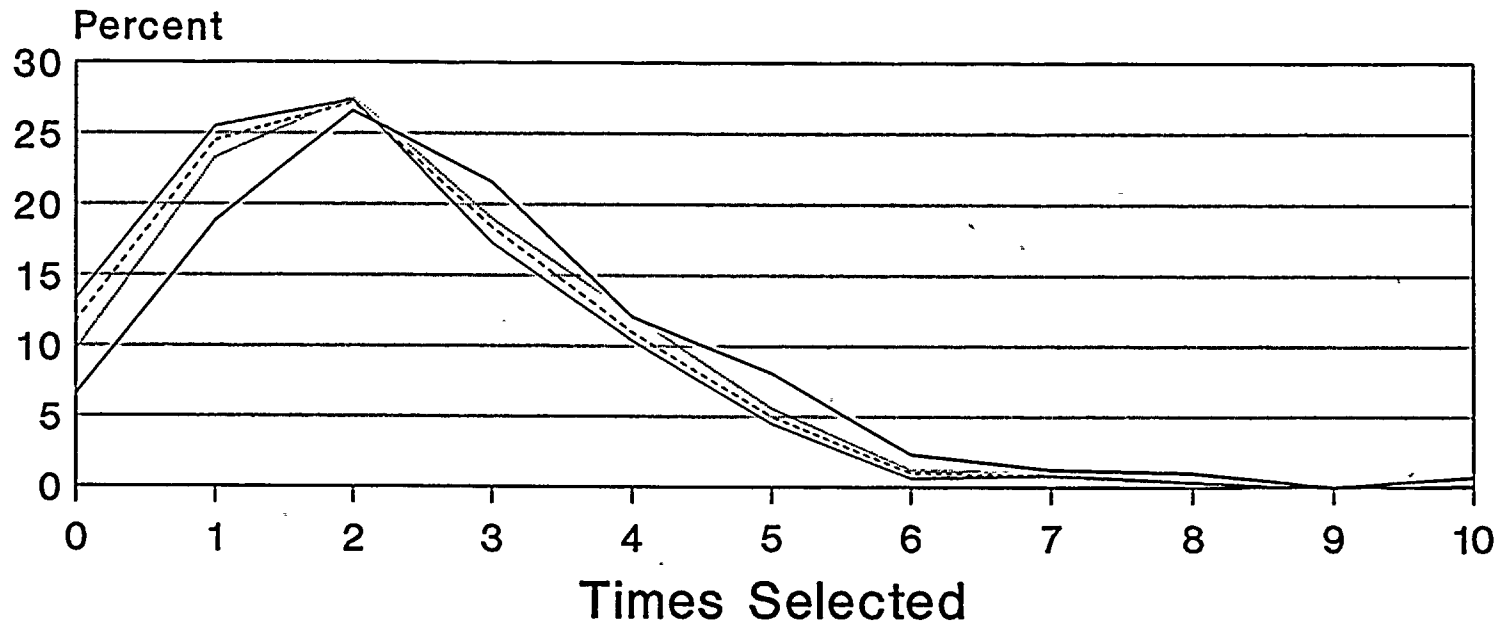
PERIOD

% of Times Selected (Available for all 161 runs)



GRAPH 2

% of times selected -Movement Over Time-

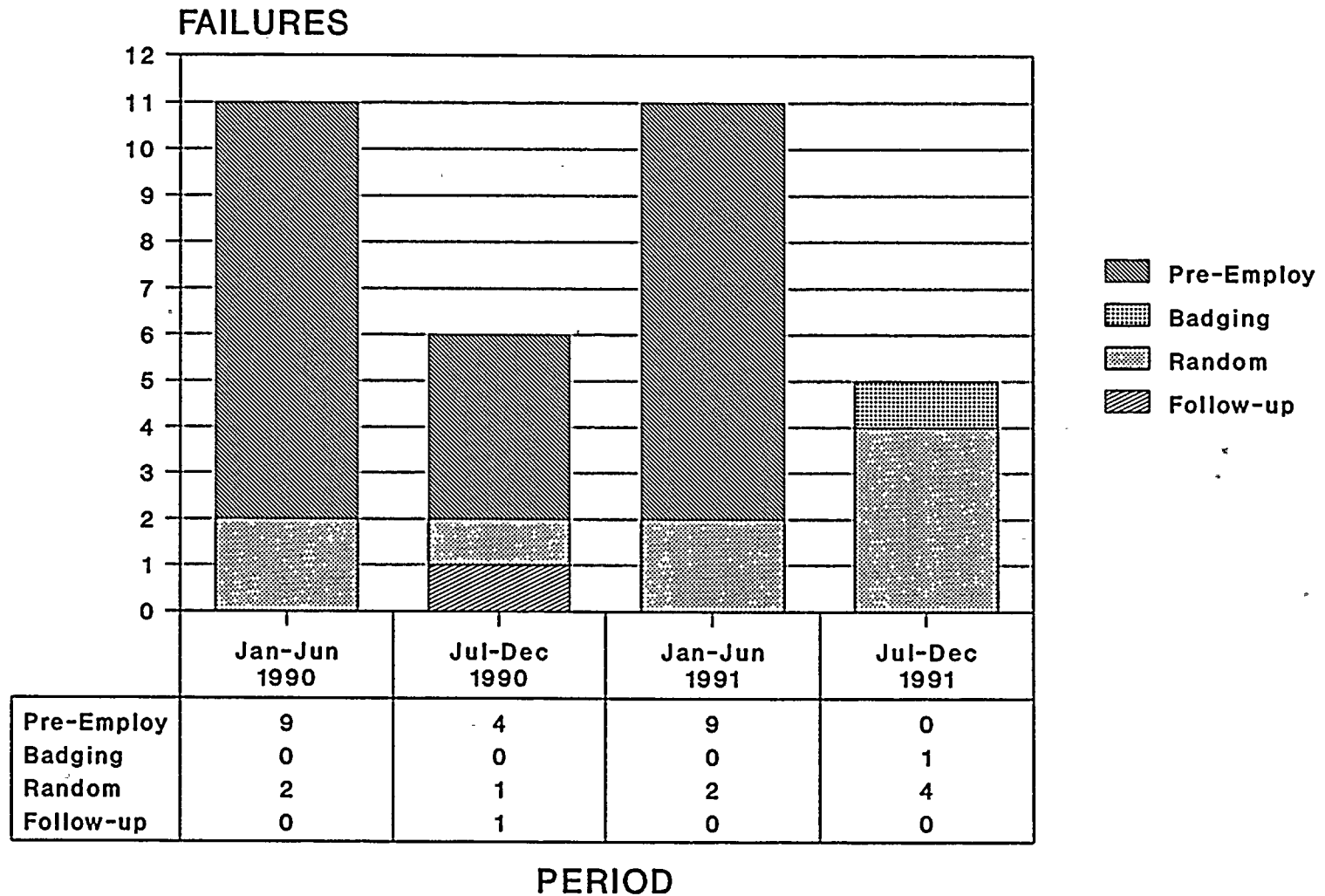


Numeric

— 60 pulls (06/90) 88 pulls (12/90)
— 127 pulls (06/91)	— 161 pulls (12/91)

GRAPH 3

Substance Test Failures All Types



GRAPH 4

