

Hematite Decommissioning Project	Procedure: HDP-PR-FSS-712, Final Status Surveys of Structures, Systems, and Components (SSCs)		
			Revision: 5 Page A-1 of 2

**APPENDIX A-1  
FINAL STATUS SURVEY RESULTS**

Survey Unit Description & Survey Unit Number:	Duplicate FSS of BSA 02-18	Survey Log Number:	7695 C 160617	Date:	6/17/2016
Technician(s): Print/Sign/Date	John Michel/ <i>JM</i> 6/22/16	Reviewed by: Print/Sign/Date	Joshy Bushman/ <i>JB</i> 6/23/16	Time:	14:00
Instrument # 1		Instrument # 2		Lud 3030 A and 43-10-1	
Instrument & Probe:	Lud 2360 43-89 I (dpm/100cm <sup>2</sup> ): 581.1	Instrument & Probe:	N/A (dpm/100cm <sup>2</sup> ): N/A	Instrument & Probe	232152 PR260187 Cal Due: 10/2/16
Instrument SN:	275770 Bkg 1: 221	Instrument SN:	N/A Bkg 1: N/A	Alpha Bkg:	1.3 Beta Bkg: 37.7
Cal Due Date:	2/24/2017 Bkg 2: 206	Cal Due Date:	N/A Bkg 2: N/A	Alpha Eff:	36.0% Beta Eff: 21.8%
Probe Size:	125 Bkg 3: 236	Probe Size:	N/A Bkg 3: N/A	Alpha MDA (dpm):	19.3 Beta MDA (dpm): 111.1
Weighted Eff.:	9.6% Ave. Bkg: 221	Weighted Eff.:	N/A Ave. Bkg: N/A	Batch No:	N/A

Comments: Refer to Survey 7686 C 160616 for Initial survey of BSA 02-18.  
A 50% scan was performed using Ludlum Instruments 2360 A, E, I, and M of remaining area. See page 2 for locations.

Sample No.	Instrument Number (i.e., 1 or 2)	Description	Removable Alpha		Removable Beta		Total Contamination (α + β)		DCGL Fraction
			Net CPM	DPM / 100cm <sup>2</sup>	Net CPM	DPM / 100cm <sup>2</sup>	Gross CPM	DPM / 100cm <sup>2</sup>	
1	1	B02-18-01-S-F-S-00	0.0	<MDA	0.0	<MDA	233	100	0.01
2	1	B02-18-02-S-F-S-00	0.0	<MDA	3.3	<MDA	241	167	0.01
3	1	B02-18-03-S-F-S-00	0.0	<MDA	0.3	<MDA	236	125	0.01
4	1	B02-18-04-S-F-S-00	1.7	<MDA	1.3	<MDA	254	276	0.01
5	1	B02-18-05-S-F-S-00	0.7	<MDA	1.3	<MDA	215	0	0.00
6	1	B02-18-06-S-F-S-00	0.0	<MDA	6.3	<MDA	268	393	0.02
7	1	B02-18-07-S-F-S-00	0.0	<MDA	0.0	<MDA	235	117	0.01
8	1	B02-18-08-S-F-S-00	0.0	<MDA	0.0	<MDA	217	0	0.00
9	1	B02-18-09-S-F-S-00	1.7	<MDA	0.0	<MDA	236	125	0.01
10	1	B02-18-10-S-F-S-00	0.0	<MDA	8.3	<MDA	255	284	0.02
11	1	B02-18-11-S-F-S-00	0.0	<MDA	4.3	<MDA	240	159	0.01
N/A	N/A	N/A	N/A	N/A	N/A	N/A	N/A	N/A	N/A
N/A	N/A	N/A	N/A	N/A	N/A	N/A	N/A	N/A	N/A
N/A	N/A	N/A	N/A	N/A	N/A	N/A	N/A	N/A	N/A
N/A	N/A	N/A	N/A	N/A	N/A	N/A	N/A	N/A	N/A
N/A	N/A	N/A	N/A	N/A	N/A	N/A	N/A	N/A	N/A
N/A	N/A	N/A	N/A	N/A	N/A	N/A	N/A	N/A	N/A
N/A	N/A	N/A	N/A	N/A	N/A	N/A	N/A	N/A	N/A
N/A	N/A	N/A	N/A	N/A	N/A	N/A	N/A	N/A	N/A
N/A	N/A	N/A	N/A	N/A	N/A	N/A	N/A	N/A	N/A
N/A	N/A	N/A	N/A	N/A	N/A	N/A	N/A	N/A	N/A
N/A	N/A	N/A	N/A	N/A	N/A	N/A	N/A	N/A	N/A
N/A	N/A	N/A	N/A	N/A	N/A	N/A	N/A	N/A	N/A
N/A	N/A	N/A	N/A	N/A	N/A	N/A	N/A	N/A	N/A
N/A	N/A	N/A	N/A	N/A	N/A	N/A	N/A	N/A	N/A
N/A	N/A	N/A	N/A	N/A	N/A	N/A	N/A	N/A	N/A
N/A	N/A	N/A	N/A	N/A	N/A	N/A	N/A	N/A	N/A
N/A	N/A	N/A	N/A	N/A	N/A	N/A	N/A	N/A	N/A
N/A	N/A	N/A	N/A	N/A	N/A	N/A	N/A	N/A	N/A



Hematite Decommissioning Project	Procedure: HDP-PR-FSS-712. Final Status Surveys of Structures, Systems, and Components (SSCs)	Revision 0

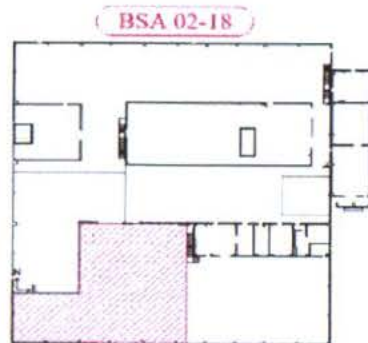
## FORM HDP-PR-FSS-712-1 FINAL STATUS SURVEY RESULTS

Survey Unit Description & Survey Unit Number:	Duplicate FSS of BSA 02-18		Survey Log Number:	7695 C 160617		Date:	6/17/2016				
Technician(s):	John Michel / <i>JM Michel</i> 6/22/16		Reviewed by:	Joshy Bushman / <i>JB</i> 6/23/16		Time:	14:00				
Print/Sign/Date:			Print/Sign/Date:								
Instrument # 1			Instrument # 2			Tennelec					
Instrument & Probe:	Lud 2360 43-89 I	MDA (dpm/100cm <sup>2</sup> ):	581.1	Instrument & Probe:	N/A	MDA (dpm/100cm <sup>2</sup> ):	N/A	Unit #:	232152 PR260187	Cal Due:	10/2/16
Instrument SN:	275770	Bkg 1:	221	Instrument SN:	N/A	Bkg 1:	N/A	Alpha Bkg:	1.3	Beta Bkg:	37.7
Cal Due Date:	2/24/2017	Bkg 2:	206	Cal Due Date:	N/A	Bkg 2:	N/A	Alpha Eff:	36.0%	Beta Eff:	21.8%
Probe Size:	125	Bkg 3:	236	Probe Size:	N/A	Bkg 3:	N/A	Alpha MDA (dpm):	19.3	Beta MDA (dpm):	111.1
Weighted Eff.:	9.6%	Ave. Bkg:	221	Weighted Eff.:	N/A	Ave. Bkg:	N/A	Batch No:	N/A		

Comments: Refer to Survey 7686 C 160616 for Initial survey of BSA 02-18.  
A 50% scan was performed using Ludlum Instruments 2360 A, E, I, and M of remaining area. See page 2 for locations.

## BSA 02-18

### Lower Walls and Floor of West Warehouse in B230



Sample Location	Surface	X Coordinates (feet)	Y Coordinates (feet)
1	Floor	49.2	60.0
2	Floor	75.5	60.0
3	Floor	101.7	60.0
4	Wall	17.1	4.1
5	Wall	37.3	2.4
6	Floor	62.4	37.4
7	Floor	88.6	37.4
8	Floor	23.0	14.7
9	Floor	49.2	14.7
10	Floor	75.5	14.7
11	Floor	101.7	14.7

