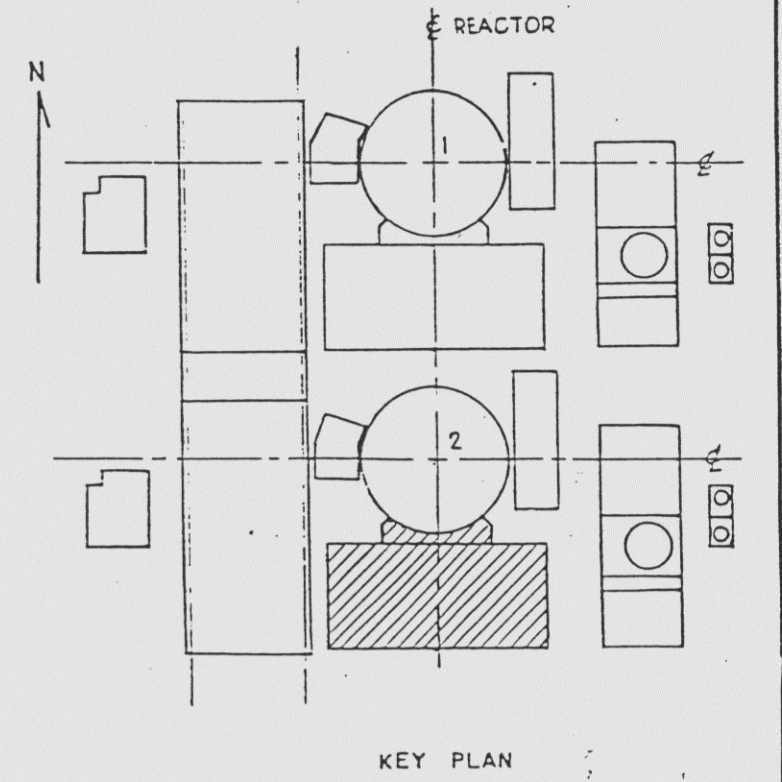
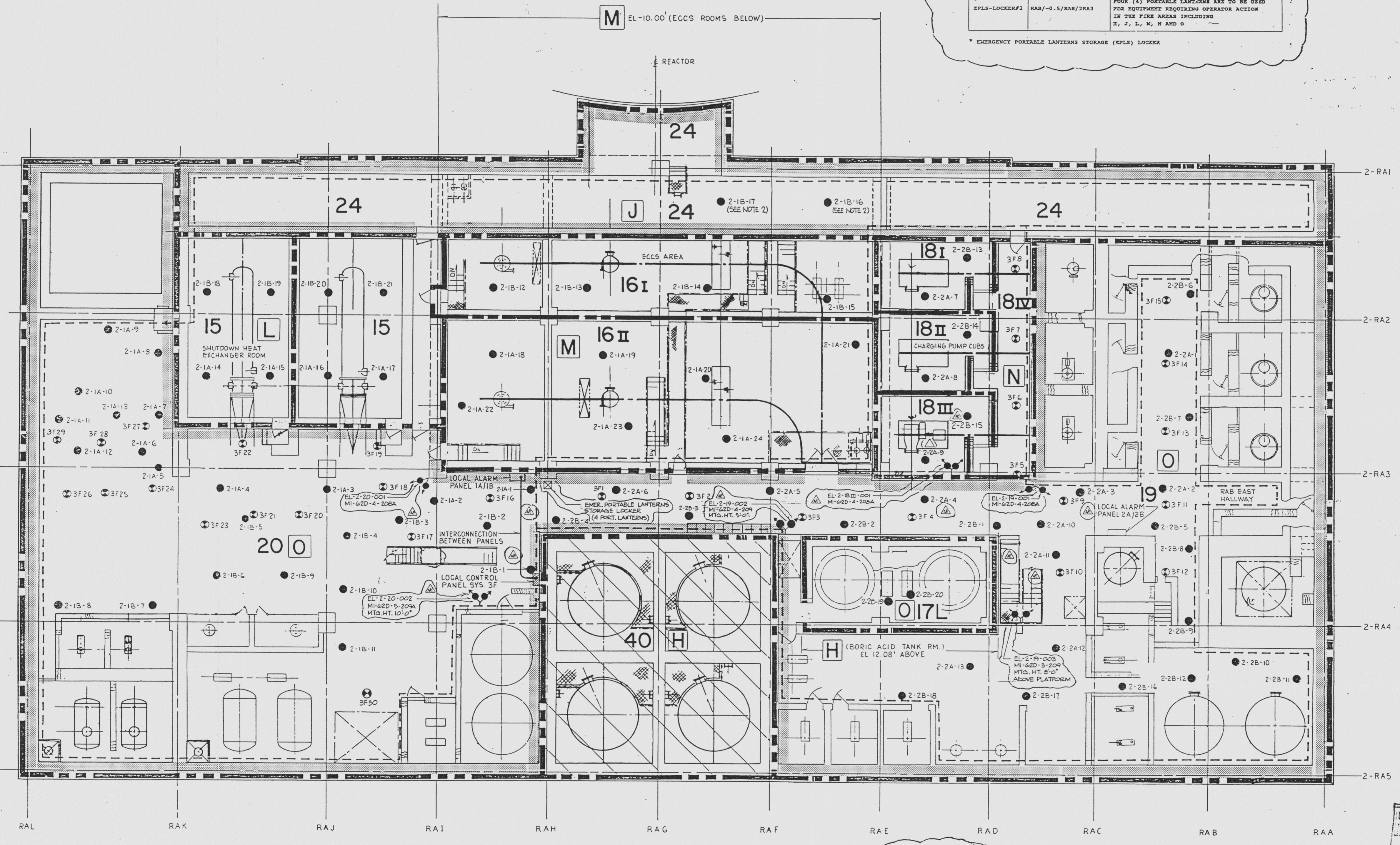


APPENDIX 'R' TAG NO.	LOCATION	AREA ILLUMINATED
EL-2-18111-001	RAB/-0.5/E-RAB/M-2RA3	ACCESS/EGRESS AT 2A CHARGING PUMP ROOM
EL-2-19-001	RAB/-0.5/E-RAB/2RA3	EAST STAIRS & S-W PASSAGEWAY TO CERG PP RM
EL-2-19-002	RAB/-0.5/E-RAB/S-2RA3	ACCESS/EGRESS AT EAST-WEST PASSAGEWAY (CENTR)
EL-2-19-003	RAB/-0.5/E-RAB/2RA4	ACCESS/EGRESS AT EAST STAIRWELL TO ELEV 19.52
EL-2-20-001	RAB/-0.5/N-RAB/2RA3	ACCESS/EGRESS S-W PASSAGEWAY AT LFPI PP ROOM
EL-2-20-002	RAB/-0.5/E-RAB/M-2RA4	ACCESS/EGRESS AND IONE 3F CONTROL PANEL
* EPLS-LOCKER#2 RAB/-0.5/RAB/2RA3 FOUR (4) PORTABLE LANTERNS ARE TO BE USED FOR EQUIPMENT REQUIRING OPERATOR ACTION IN THE FIRE AREAS INCLUDING H, J, L, M, N AND O		
* EMERGENCY PORTABLE LANTERN STORAGE (EPLS) LOCKER		



- NOTES
1. X TYPE DETECTOR PROVIDES EARLY WARNING FIRE DETECTION & NOTIFICATION ONLY. Y TYPE DETECTOR PROVIDES ACTUATION OF FIRE SUPPRESSION SYSTEM, EARLY WARNING & NOTIFICATION.
  2. IONIZATION DETECTORS 2-1B-16 & 2-1B-17 ARE LOCATED IN THE ECCS AREA.
  3. A.C. POWER SOURCE RECEPTACLE FOR APPENDIX 'R' EMERGENCY BATTERY PACK LIGHTING UNITS SEE 2998-G-297, SH-1.

- FIRE PROTECTION SYMBOLS
- /// 'A' TRAIN SECURE
  - ▨ 'B' TRAIN SECURE
  - GRINNELL LOCAL ALARM PANEL
  - HONEYWELL LOCAL ALARM PANEL
  - - - HONEYWELL SMOKE DETECTION SYSTEM ZONE BOUNDARY
  - - - - - APPENDIX 'R' FIRE AREA BOUNDARY
  - GRINNELL THERMAL DETECTOR AND TAG NUMBER (Y TYPE DETECTOR - SEE NOTE 1) DETECTOR NO. SYSTEM I.D.
  - DUCT MOUNTED SMOKE DETECTORS
  - IONIZATION HONEYWELL SMOKE DETECTOR AND TAG NUMBER (X TYPE DETECTOR - SEE NOTE 1) DETECTOR NO. TRAIN
  - HONEYWELL THERMAL DETECTOR (135°F) (X TYPE DETECTOR - SEE NOTE 1)
  - HONEYWELL THERMAL DETECTOR (200°F) (X TYPE DETECTOR - SEE NOTE 1)
  - FENWAL VERTICAL DETECT-A-FIRE UNIT (X TYPE DETECTOR - SEE NOTE 1)
  - AA (TYP) APPENDIX 'R' FIRE AREA
  - 42 (TYP) APPENDIX 'R' FIRE ZONE
  - ⊙ EMERGENCY BATTERY PACK LIGHTING UNIT
  - ⊙ EMERGENCY DC LIGHTING FIXTURE (APPLETON MODEL #G-502/G, LAMP TYPE 200P530) LIGHTING PANEL NUMBER



SYMBOLS CONT'D

- EMER. LTG. NO.
- APPENDIX 'R'
- FIRE ZONE NO.
- UNIT NO.
- EMER. LTG.
- EL-0-000-000
- MI-620-4-206A
- MI-620-00-000
- BILL OF MATERIAL
- CIRCUIT NO.
- LTG. PANEL NO.
- △ - EQUIPMENT REQS. APPENDIX 'R' EMER. LTG.
- △ - ACCESS/EGRESS PASSAGEWAYS REQUIRING APPENDIX 'R' EMER. LTG.
- \* - REMOTE EMERGENCY BATTERY PACK LIGHT FIXTURE
- ⊙ - EMERGENCY PORTABLE LANTERN STORAGE LOCKER

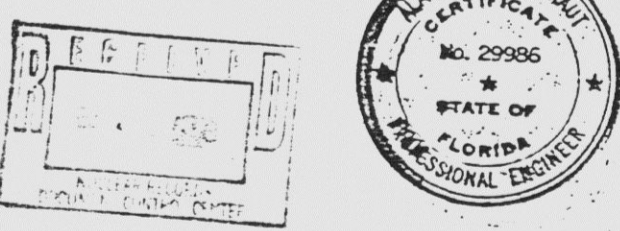
INFORMATION ONLY  
VERIFY WITH A CONTROLLED COPY BEFORE USE.

NO.	DATE	REVISION	BY	CHK.	APPROVED
4	10-14-43	REVISED: ADD: (A-DIG-15, E18-19, H12, IS, IT, K, J, P, Q, R, S, M, N, H-15) TABUL. NOTES 3, EMER. BATT. PACK W/S, SYMBOLS; DEL: (12) EMER. BATT. PACK	AWB	NA	SB
3	4-25-86	ADDED: EMER BATT PACK (H12) PER PCM 074-285	J. E. J.	K.C.	W/S
2	9-5-85	ADDED: SYMBOLS (G18) SYMBOL TO INDICATE APP 'R' TRAIN'S SECURE AREA (I1 THRU I16) SYMBOL TO INDICATE APP 'R' TRAIN'S SECURE AREA (J8). NOT CHECKED FOR CLARITY. ADDED: NOTE (E18) NOTE REF (F9, H11); DOORS AS NOTED; SYMBOL (G18) ZONE NO (F12, G5); FIRE BOUNDARY (S-W, G12, H12); RM TITLES AS NOTED. REVISED: EMER LTG LOC (I10); ZONE NO (I10); TITLE BLOCK (H19); SYMBOLS (G19)	J. E. J.	RP	W/S
1	1-27-85				

THIS DOCUMENT IS THE PROPERTY OF EBASCO SERVICES INCORPORATED. ITS USE IS EXPRESSLY RESTRICTED BY THE TERMS OF THE CONTRACT, DATED AS OF SEPT 1, 1975 BETWEEN EBASCO SERVICES INCORPORATED AND FLORIDA POWER & LIGHT COMPANY.

FLORIDA POWER & LIGHT COMPANY  
ST. LUCIE PLANT  
1983-890 MW (e) EXTENSION-UNIT NO. 2  
FIRE PROTECTION  
REACTOR AUX. BLDG EL.-0.50'  
FIRE DETECTORS AND EMERGENCY LIGHTS

EBASCO SERVICES INCORPORATED NEW YORK  
SCALE: 1/8" = 1'-0"  
APPROVED: [Signature]  
DATE: 6-14-88  
DIV. ELEC  
DR. RJE  
CH. E.O.  
2998-G-424 S01



9712040015-30