

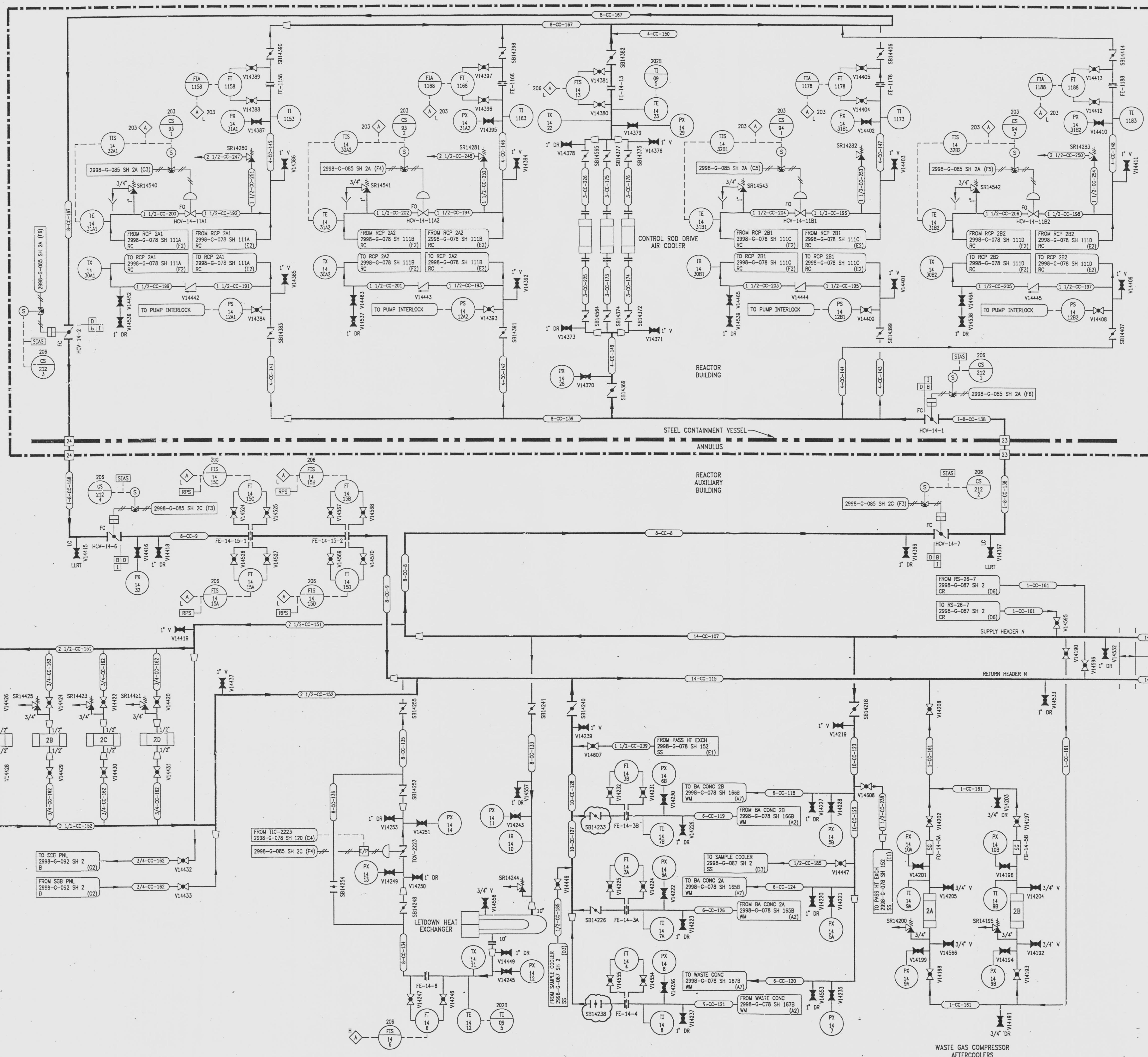
REVISIONS					
NO	DATE	DESCRIPTION	BY	CH	APPROVED
29	7/24/95		GM	RR	JUZ
DCR-SM-94-057: REDRAWN					
30	10/4/96		HJF	HS	JRH
CRN 85037-5036: ADD (E1,E8) VALVE MODE LC					
31	10/25/96		GM	GW	CF
CRN 85037-5490: REV (F4,H4) VALVE POSITION					

DRAWING NUMBER
2998-G-083
SH 2

DRAWING NUMBER
2998-G-083
SH 2

DRAWING NUMBER
2998-G-083
SH 2

DRAWING NUMBER
2998-G-083
SH 2



REFERENCE DRAWINGS

PIPE, VALVE & INSTRUMENT SYMBOLS	2998-G-078 SH 100
VALVE LIST	2998-A-051
LINE LIST	2998-B-052
VALVE OPERATIONAL NUMBER INDEX	2998-B-057A
INSTRUMENT INSTALLATION DETAILS	2998-B-231
INSTRUMENT LIST	2998-B-270C

INFORMATION ONLY
VERIFY WITH A CONTROLLED COPY BEFORE USE.



NOTE:
THIS DRAWING IS MADE FROM REV. 28
OF DRAWING 2998-G-083

REVISION OF THIS DRAWING MAY REQUIRE UPDATE OF THE FOLLOWING DOCUMENT: FSAR FIGURE 9.2-2

NUCLEAR SAFETY RELATED IN PART ONLY

FLORIDA POWER & LIGHT COMPANY
ST. LUCIE PLANT
1983 - 890 MW EXTENSION - UNIT 2
FLOW DIAGRAM
COMPONENT COOLING SYSTEM

SCALE: NONE	APPROVAL:	DATE:
DR: MECH		2998-G-083
DR: D. CHEFFI		SHEET
CH: C. DUNNINGHAM		31

971 204 0015-20