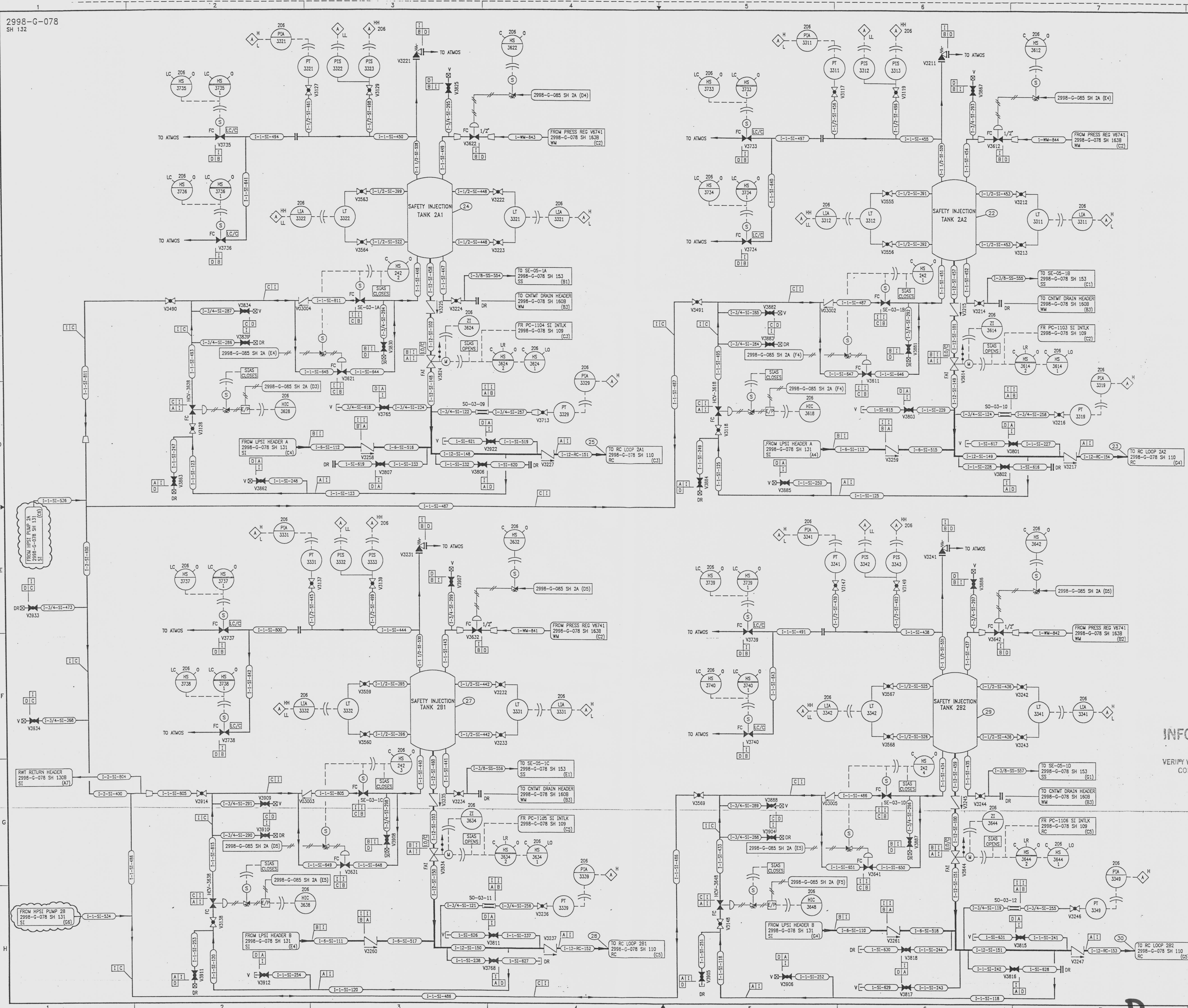


2998-G-078  
SH 132



REVISIONS					
NO	DATE	DESCRIPTION	BY	CH	APPROVED
4	7/24/95	DCR-SM-94-057: REDRAWN	BB	DWC	JJZ
5	12/8/95	DCR-SM-975-225: REV. DRAIN LINE (H6)	PAB	HS	TWS
6	6/16/97	DCR-S70038: REV. DRAIN LINE (H5), VENT LINE (H2)	GM	HS	SHM
7	9/1/97	DCR-S6037-6563: REV. (E1,H1) CONTINUATIONS			LEF

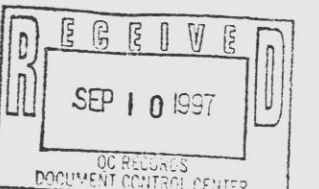
DRAWING NUMBER  
2998-G-078  
SH 132

DRAWING NUMBER  
2998-G-078  
SH 132

DRAWING NUMBER  
2998-G-078  
SH 132

REFERENCE DRAWINGS  
PIPE, VALVE & INSTRUMENT SYMBOLS 2998-G-078 SH 100  
VALVE LIST 2998-A-051  
LINE LIST 2998-B-052  
VALVE OPERATIONAL NUMBER INDEX 2998-B-057A  
INSTRUMENT INSTALLATION DETAILS 2998-B-231  
INSTRUMENT LIST 2998-B-270C

INFORMATION ONLY  
VERIFY WITH A CONTROLLED COPY BEFORE USE.



NOTE:  
THIS DRAWING IS MADE FROM REV. 3  
OF DRAWING 2998-G-078 SH 132

REVISION OF THIS DRAWING MAY REQUIRE UPDATE OF THE FOLLOWING DOCUMENTS:  
1. FSAR FIGURE 4.4-9a  
2. FSAR FIGURE 6.3-1c

NUCLEAR SAFETY RELATED  
IN PART ONLY  
FLORIDA POWER & LIGHT COMPANY  
ST LUCIE PLANT  
1983 - 890 MW EXTENSION - UNIT 2  
FLOW DIAGRAM  
SAFETY INJECTION  
SYSTEM

RAYTHEON ENGINEERS & CONSTRUCTORS, INC.	
SCALE: NONE	APPROVAL DATE:
DW: MECH	2998-G-078
DR: B. BLUM	SHEET 132
CH: GUNNINGHAM	7

971204 0015-18