

2998-G-078
SH 165A

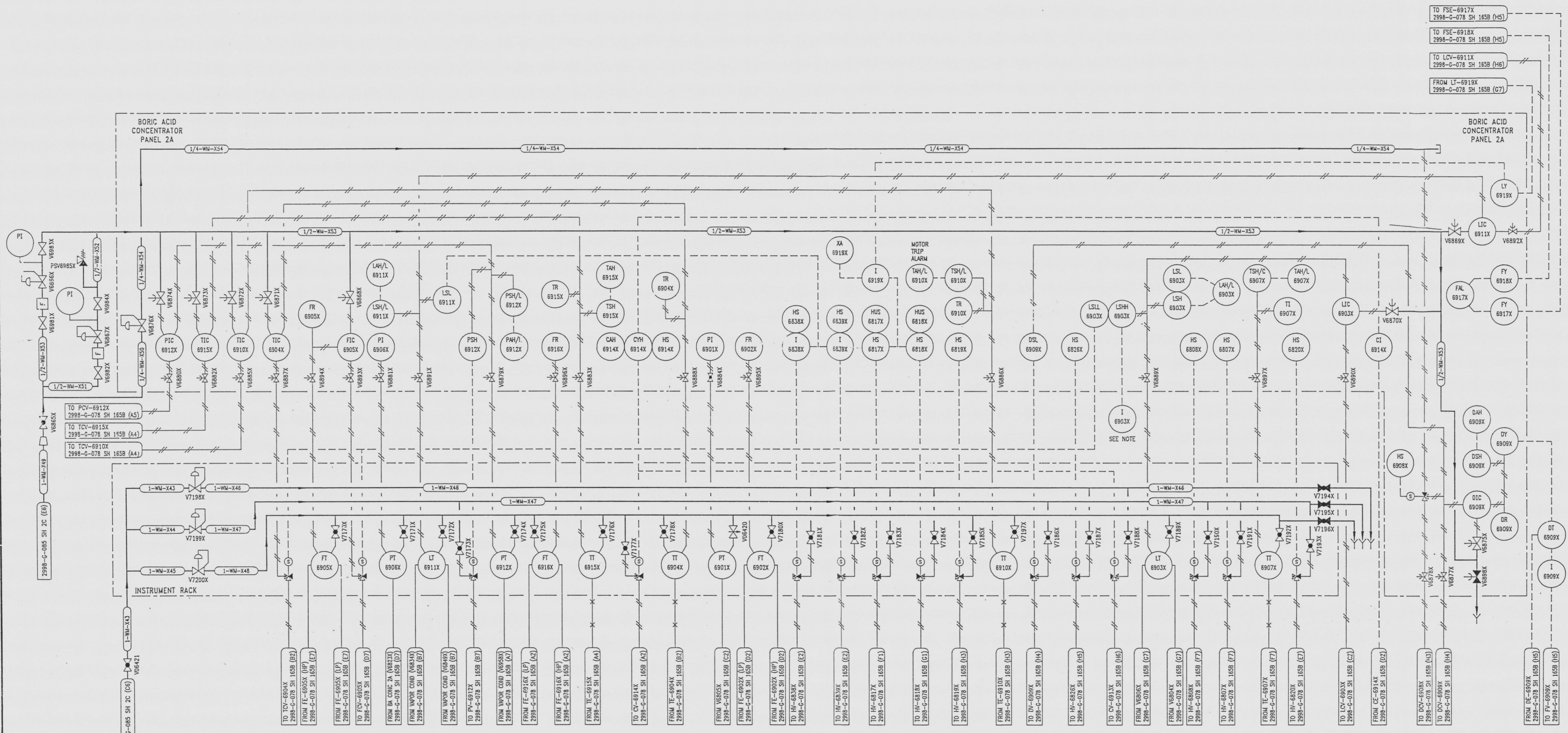
REVISIONS				
NO	DATE	DESCRIPTION	BY	APPROVED
3	7-24-95	OCB-SUM-24-02: REDRAWN	CJG	DWC

DRAWING NUMBER
2998-G-078
SH 165A

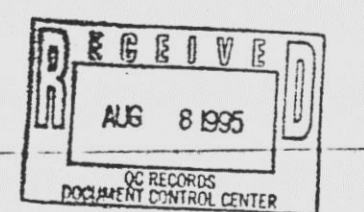
DRAWING NUMBER
2998-G-078
SH 165A

DRAWING NUMBER
2998-G-078
SH 165A

JUMBER



REFERENCE DRAWINGS
PIPE, VALVE & INSTRUMENT SYMBOLS 2998-G-078 SH 100
VALVE LIST 2998-A-051
VALVE OPERATIONAL NUMBER INDEX 2998-B-052
INSTRUMENT INSTALLATION DETAILS 2998-B-057A
INSTRUMENT LIST 2998-B-211
2998-B-270C



INFORMATION ONLY
VERIFY WITH A CONTROLLED COPY BEFORE USE.

NOTE:
THIS DRAWING IS MADE FROM REV. 2
OF DRAWING 2998-G-078 SH 165A

REVISION OF THIS DRAWING MAY REQUIRE UPDATE OF THE FOLLOWING DOCUMENT: FSAR FIGURE 11.2-3

FLORIDA POWER & LIGHT COMPANY
ST. LUCIE PLANT
1983 - 890 MWe EXTENSION - UNIT 2
FLOW DIAGRAM
WASTE MANAGEMENT
SYSTEM

RAYTHEON ENGINEERS & CONSTRUCTORS, INC.

SCALE: NONE	APPROVAL	DATE:
DR: MECH		2998-G-078
DR: S. BLATT		SHEET
DR: CHANNING		165A

3

971204005-112 E