

2998-G-078  
SH 171

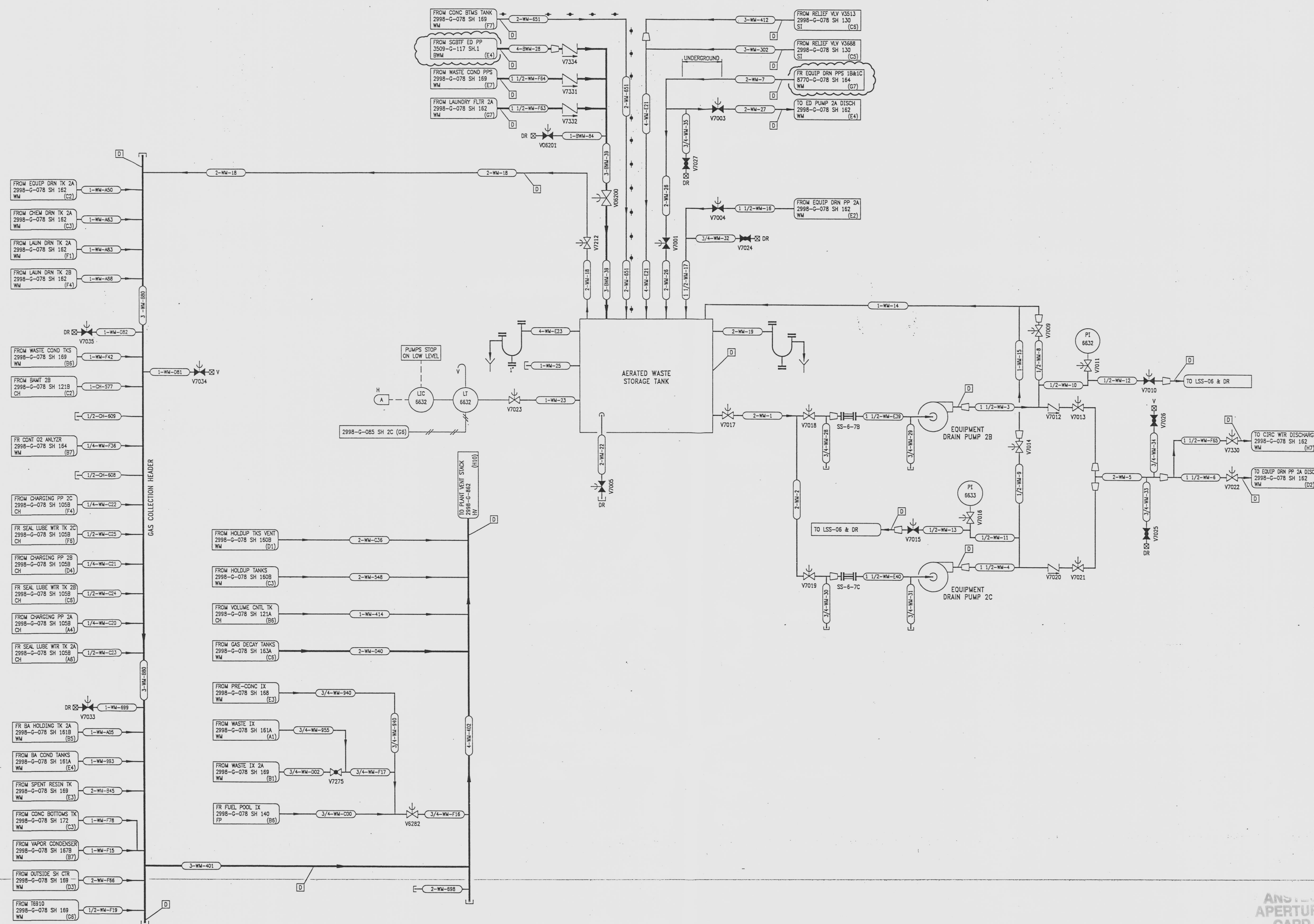
REVISIONS					
NO	DATE	DESCRIPTION	BY	CH	APPROVED
8	2/24/95		CJC	PGB	JJZ
DCR-SLM-24-027 REDRAWN					
9	8/8/98		HJF	HS	JJZ
CRM 86037-6035; DEL: (F3,G3,C4,B5) LC/LD					
10	8/5/97		GM		JJZ
DCR 86022 REV: (B3,B5) CONTINUATION					

DRAWING

DRAWING NUMBER  
2998-G-078  
SH.171

DRAWING NUMBER

NUMBER



REFERENCE DRAWINGS  
PIPE, VALVE & INSTRUMENT SYMBOLS 2998-G-078 SH 100  
VALVE LIST 2998-A-051  
LINE LIST 2998-B-052  
VALVE OPERATIONAL NUMBER INDEX 2998-B-057A  
INSTRUMENT INSTALLATION DETAILS 2998-B-231  
INSTRUMENT LIST 2998-B-270C

INFORMATION  
ONLY  
VERIFY WITH A CONTROLLED  
COPY BEFORE USE.

ANSI APTURE  
CARD

NOTE:  
THIS DRAWING IS MADE FROM REV. 7  
OF DRAWING 2998-G-078 SH 171.

REVISION OF THIS DRAWING MAY REQUIRE UPDATE OF  
THE FOLLOWING DOCUMENT: FSAR FIGURE 11.2-8

FLORIDA POWER & LIGHT COMPANY ST LUCIE PLANT 1983 - 890 MWe EXTENSION - UNIT 2 FLOW DIAGRAM WASTE MANAGEMENT SYSTEM	
RAYTHEON ENGINEERS & CONSTRUCTORS, INC.	
SCALE: NONE	APPROVAL: DATE:
DR: G. GLATT	2998-G-078
CH: P. BERGERSON	SHEET 171
	10

9712040015-109  
E