

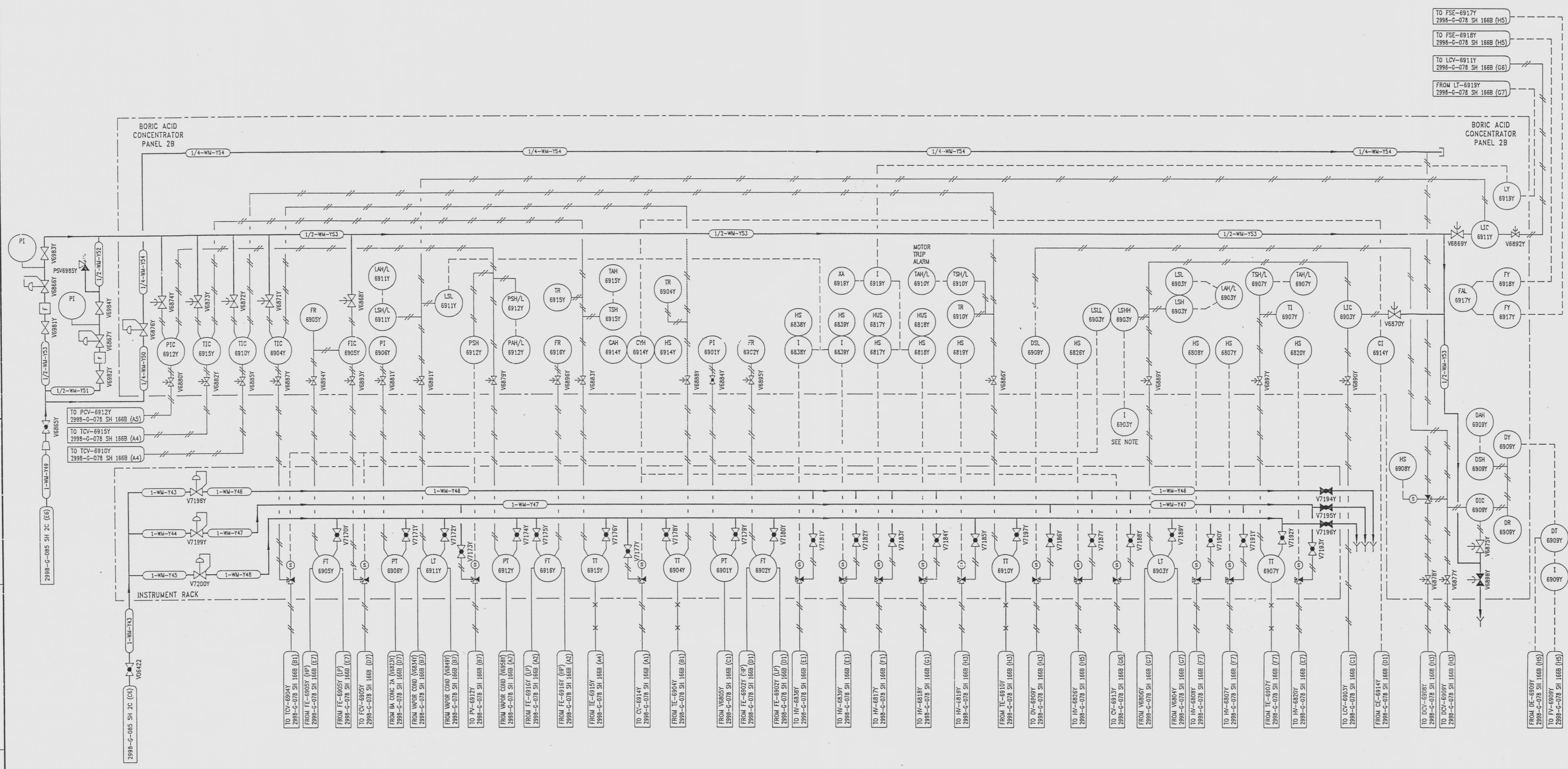
REVISIONS				
NO	DATE	DESCRIPTION	BY	CH
4	7-24-93	DCR-SLM-24-057: REDRAWN	CJG	CHC
				APPROVED

DRAWING NUMBER
2998-G-078
SH 166A

DRAWING NUMBER
2998-G-078
SH 166A

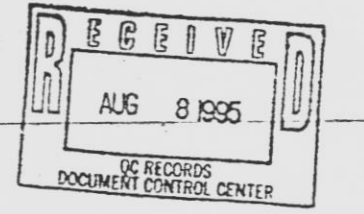
DRAWING NUMBER
2998-G-078
SH 166A

UNBER



NOTE
STOP HOLDUP DRAIN AND RECIRCULATION PUMPS ON HIGH LEVEL

- REFERENCE DRAWINGS
- PIPE, VALVE & INSTRUMENT SYMBOLS 2998-G-078 SH 100
 - VALVE LIST 2998-G-051
 - LINE LIST 2998-G-052
 - VALVE OPERATIONAL NUMBER INDEX 2998-G-057A
 - INSTRUMENT INSTALLATION DETAILS 2998-G-231
 - INSTRUMENT LIST 2998-G-270C



NOTE:
THIS DRAWING IS MADE FROM REV. 3
OF DRAWING 2998-G-078 SH 166

REVISION OF THIS DRAWING MAY REQUIRE UPDATE OF
THE FOLLOWING DOCUMENT: FSAR FIGURE 11.2-4

INFORMATION ONLY
VERIFY WITH A CONTROLLED COPY BEFORE USE.

FLORIDA POWER & LIGHT COMPANY
ST. LUCIE PLANT
1983 - 800 MW EXTENSION - UNIT 2
FLOW DIAGRAM
WASTE MANAGEMENT
SYSTEM

RAYTHEON ENGINEERS & CONSTRUCTORS, INC.			
SCALE: NONE	APPROVAL	DATE:	
DR: MELCH		2998-G-078	
SR: C. GLATT		SH 166A	
CH: SUNNINGHAM			4

977204 0015-114