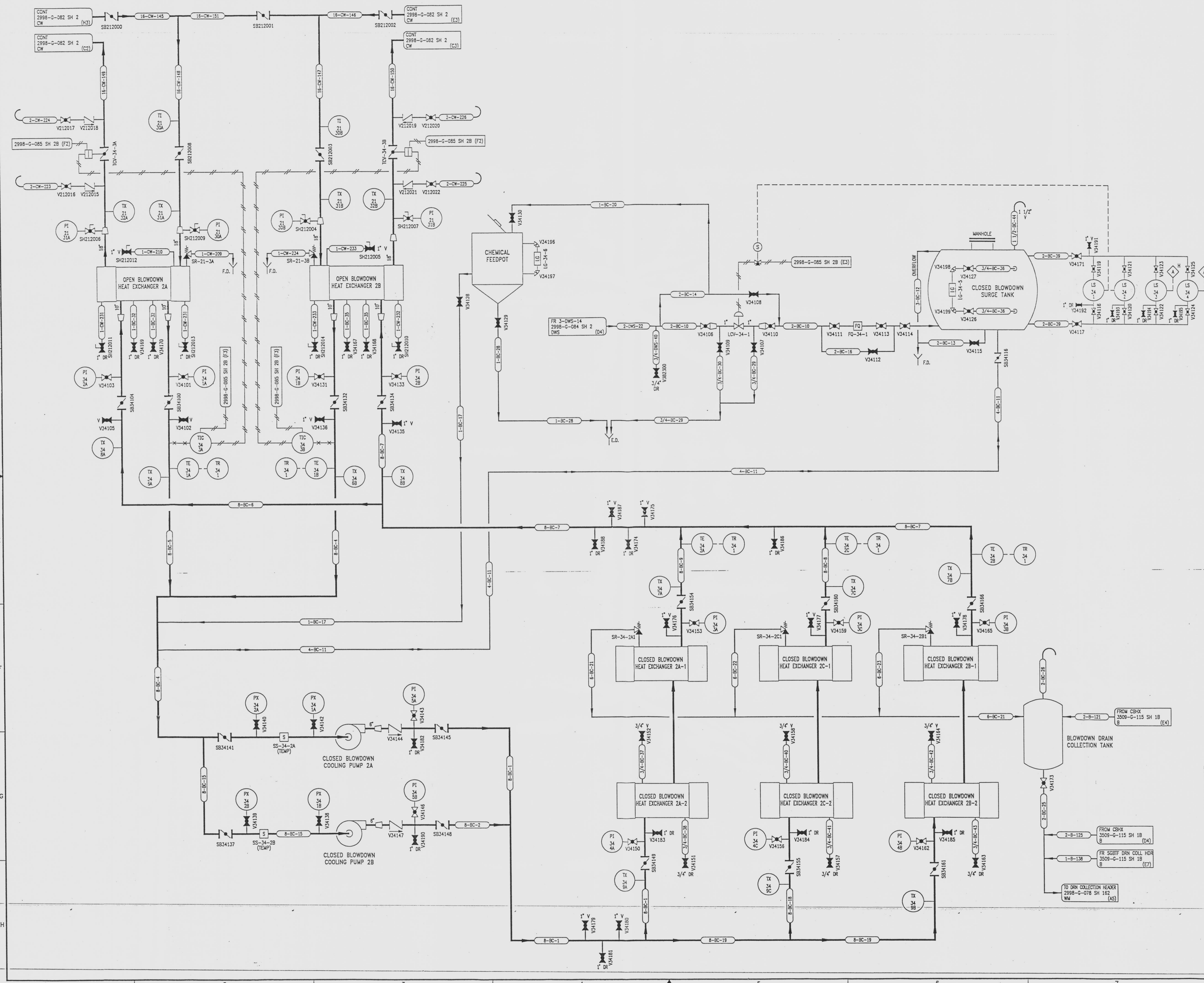


3509-G-116
SH 2

REVISIONS				
NO	DATE	DESCRIPTION	BY	APPROVED
15	6/16/97		C.J.G.	P.D.B.
DCR 98029: REDRAWN				



DRAWING NUMBER
3509-G-116
SH 2

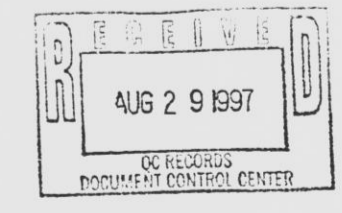
DRAWING NUMBER
3509-G-116
SH 2

DRAWING NUMBER
3509-G-116
SH 2

DRAWING NUMBER
3509-G-116
SH 2

- REFERENCE DRAWINGS
- PIPE, VALVES & INSTRUMENT SYMBOLS 2998-G-078 SH 100
 - VALVE LIST 2998-A-051
 - LINE LIST 2998-B-052
 - VALVE OPERATIONAL NUMBER INDEX 2998-B-057A
 - INSTRUMENT INSTALLATION DETAILS 2998-B-231
 - INSTRUMENT LIST 2998-B-270C

INFORMATION ONLY
VERIFY WITH A CONTROLLED COPY BEFORE USE.



ANSTEC APERTURE CARD

NOTE:
THIS DRAWING IS MADE FROM REV. 14
OF DRAWING 3509-G-116

FLORIDA POWER & LIGHT COMPANY
ST. LUCIE PLANT
1983 - 890 Mw EXTENSION - UNIT 2
FLOW DIAGRAM
STEAM GENERATOR BLOWDOWN
COOLING SYSTEM

FLORIDA POWER & LIGHT COMPANY	
SCALE: NONE	APPROVAL: _____ DATE: _____
DRW: MECH	3509-G-116
DR: C. GLATT	SHEET 2
CH: P. BERGERON	15

E 9717040015 - 124