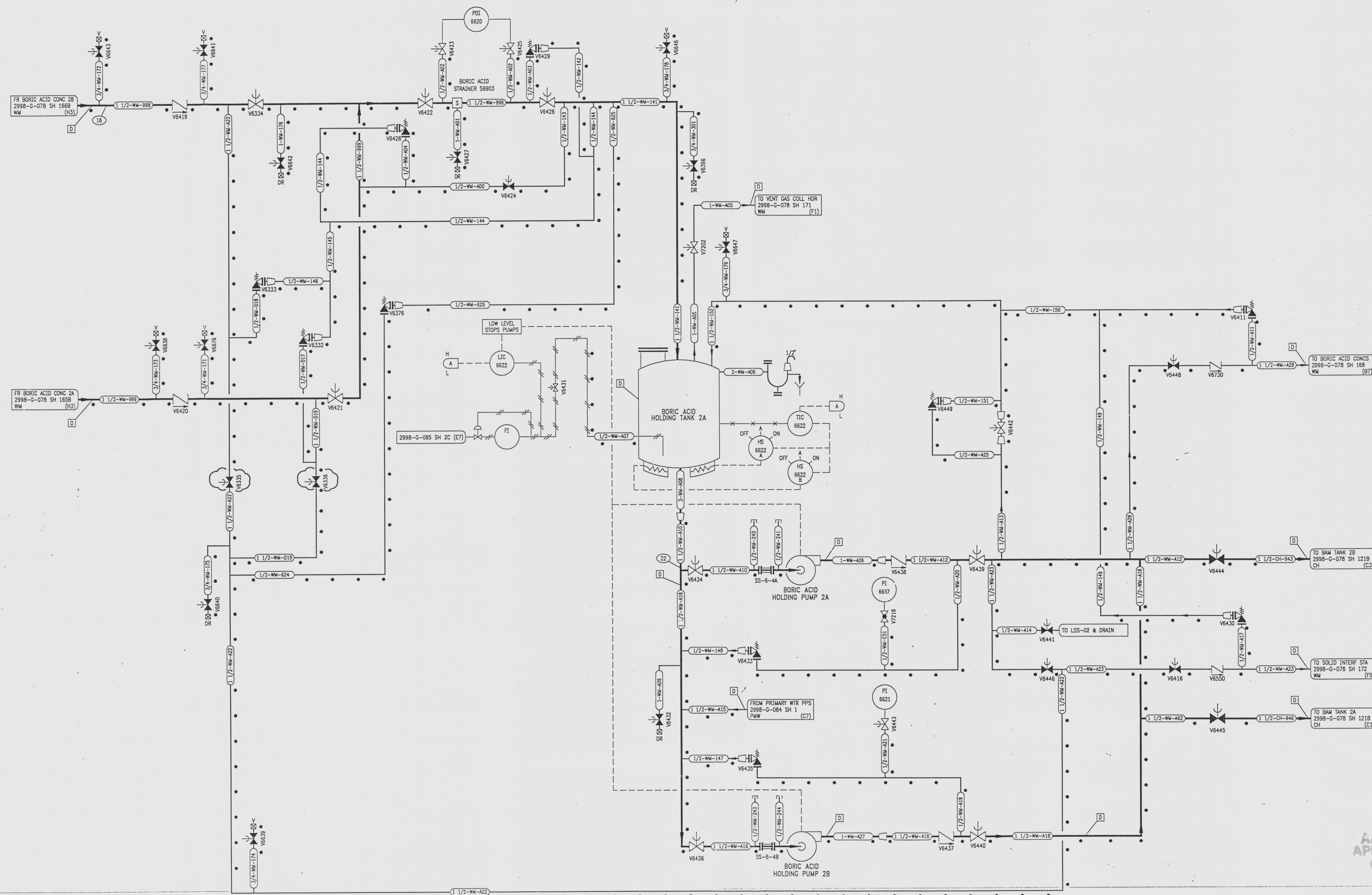


NO	DATE	DESCRIPTION	BY	CH	APPROVED
8	7/24/95		GM	RR	JUZ
9	8-8-96	DCR-SLM-94-057: REDRAWN	HJF	///	998
CRN 95037-5035; DEL: (02) LC					



NOTES
FOR NOTES & REFERENCE DRAWINGS SEE 2998-G-078 SH 161A.

INFORMATION
ONLY
VERIFY WITH A CONTROLLED
COPY BEFORE USE.

APERTURE
CARD

NOTE:
THIS DRAWING IS MADE FROM REV. 7
OF DRAWING 2998-G-078 SH 161

REVISION OF THIS DRAWING MAY REQUIRE UPDATE OF
THE FOLLOWING DOCUMENT: FSAR FIGURE 11.2-5

**NUCLEAR SAFETY RELATED
IN PART ONLY**

FLORIDA POWER & LIGHT COMPANY
ST LUCIE PLANT
1983 - 890 MWe EXTENSION - UNIT 2
FLOW DIAGRAM
WASTE MANAGEMENT
SYSTEM

RAYTHEON ENGINEERS & CONSTRUCTORS, INC.		
SCALE: NONE	APPROVAL	DATE:
DR: MECH		2998-G-078
CH: W. DELPHREY		SHEET 161B
		9

DR
DRAWING NUMBER
2998-G-078
SH 161B

DRAWING NUMBER
2998-G-078
SH 161B

DRAWING NUMBER
2998-G-078
SH 161B