

2998-G-078
SH 160A

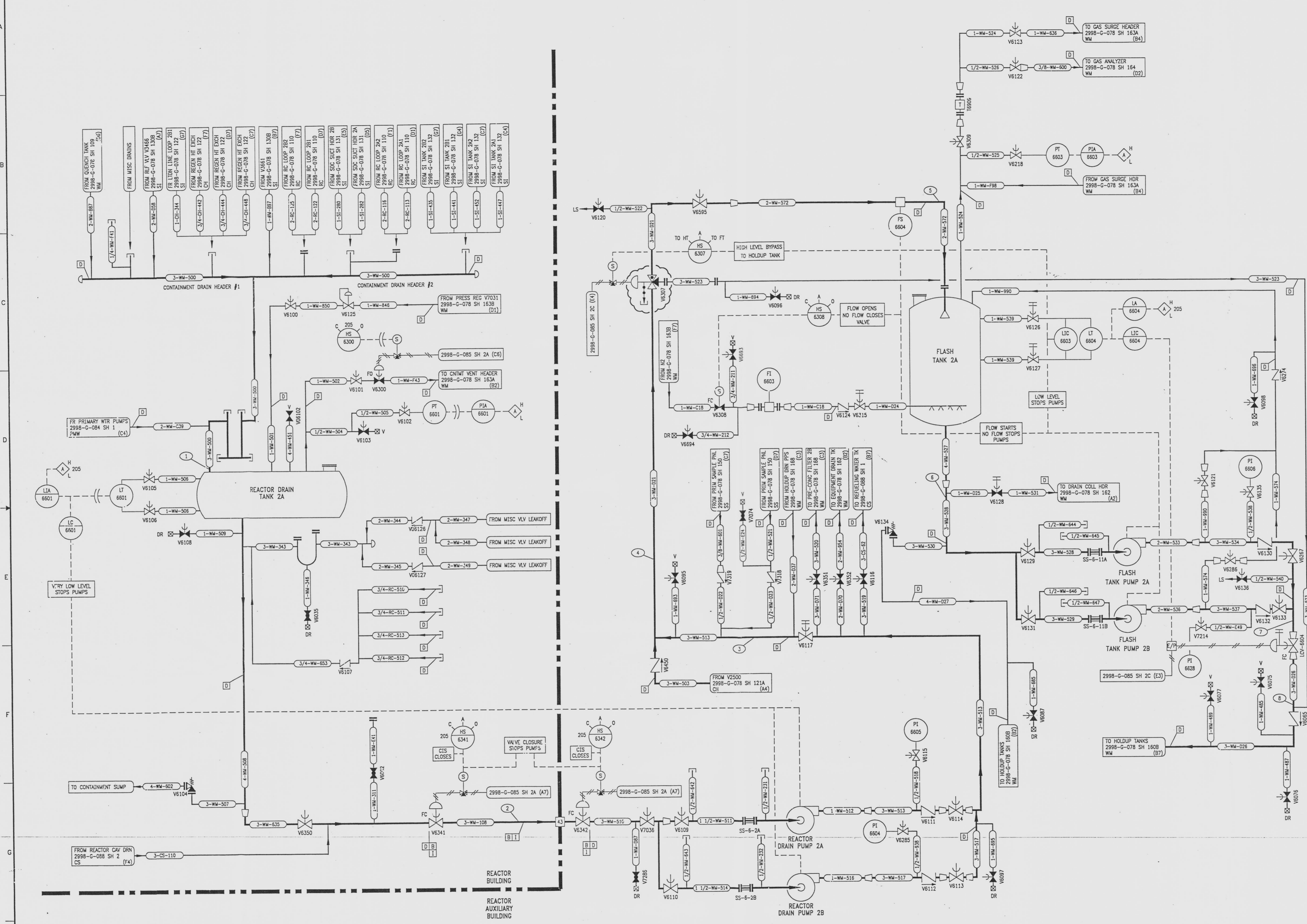
REVISIONS					
NO	DATE	DESCRIPTION	BY	CH	APPROVED
3	7/24/95		BB	DWC	JJZ
DCR-SLM-84-027: REDRAWN					
4	12/21/95	2998-G-078 SH 163A (A7)	GM	HS	TWS
2998-G-078 SH 163A (A7) CONTINUATIONS					
5	8/8/96		GM	HS	JJZ
CRN 98037-8035: DEL (02, E5 & C4) LC/LD					
6	11/9/96		GM	PPS	MS
CRN 98037-8493: REV. (C4) STEM LEAK OFF CAP					

DRAWING NUMBER
2998-G-078
SH 160A

DRAWING NUMBER
2998-G-078
SH 160A

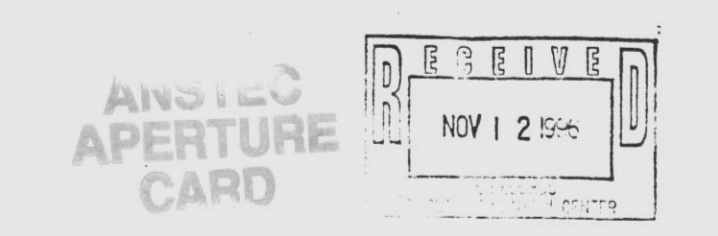
DRAWING NUMBER
2998-G-078
SH 160A

IG NUMBER
2998-G-078
SH 160A



REFERENCE DRAWINGS

PIPE, VALVE & INSTRUMENT SYMBOLS	2998-G-078 SH 100
VALVE LIST	2998-A-051
LINE LIST	2998-B-052
VALVE OPERATIONAL NUMBER INDEX	2998-B-057A
INSTRUMENT INSTALLATION DETAILS	2998-B-231
INSTRUMENT LIST	2998-B-270C



NOTE: THIS DRAWING IS MADE FROM REV. 2 OF DRAWING 2998-G-078 SH 160

REVISION OF THIS DRAWING MAY REQUIRE UPDATE OF THE FOLLOWING DOCUMENTS: FSAR FIGURE 11.2-1

NUCLEAR SAFETY RELATED IN PART ONLY

FLORIDA POWER & LIGHT COMPANY
ST LUCIE PLANT
1983 - 890 MWe EXTENSION - UNIT 2
FLOW DIAGRAM
WASTE MANAGEMENT SYSTEM

RAYTHEON ENGINEERS & CONSTRUCTORS, INC		
SCALE: NONE	APPROVAL	DATE:
DR: MECH		2998-G-078
CH: SUNNINGHAM		SHEET 160A
		6

INFORMATION ONLY
VERIFY WITH A CONTROLLED COPY BEFORE USE.

7712040015 - 117