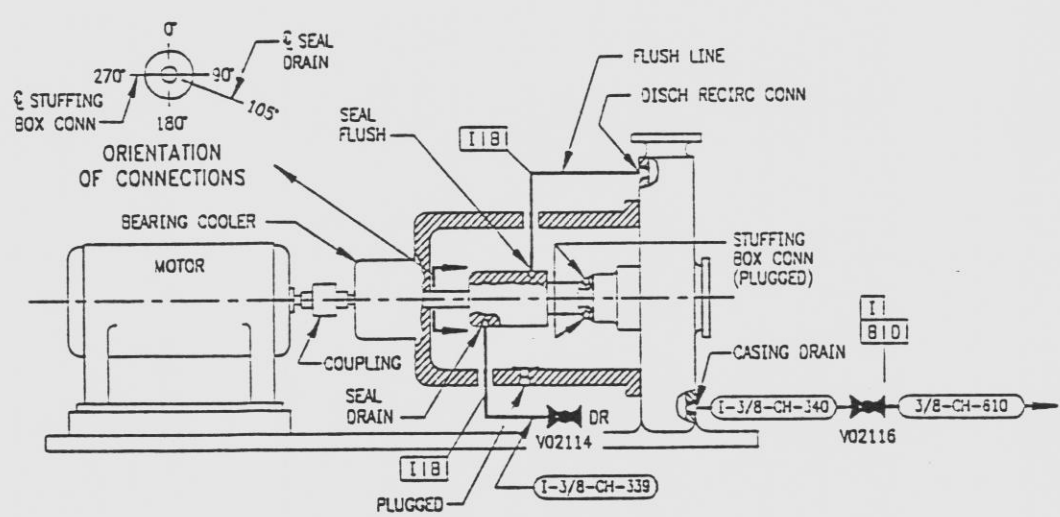
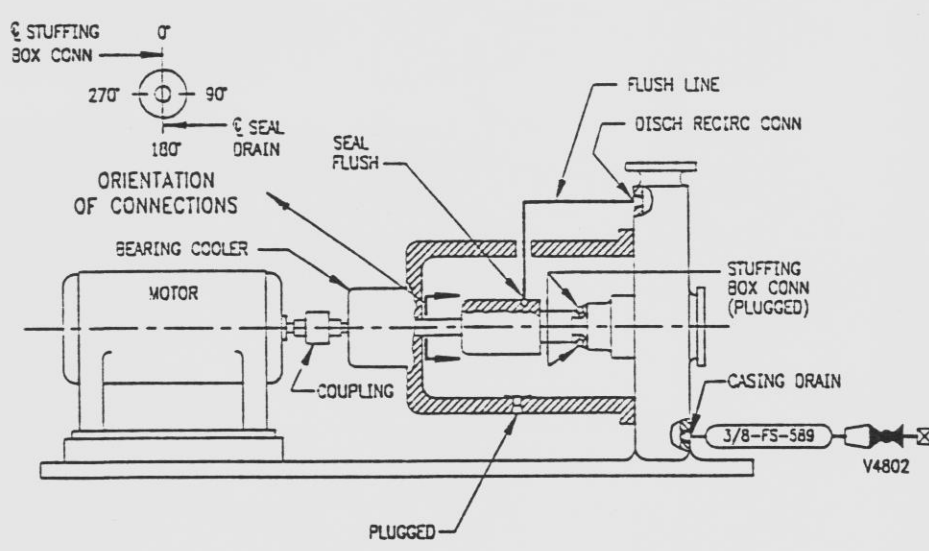


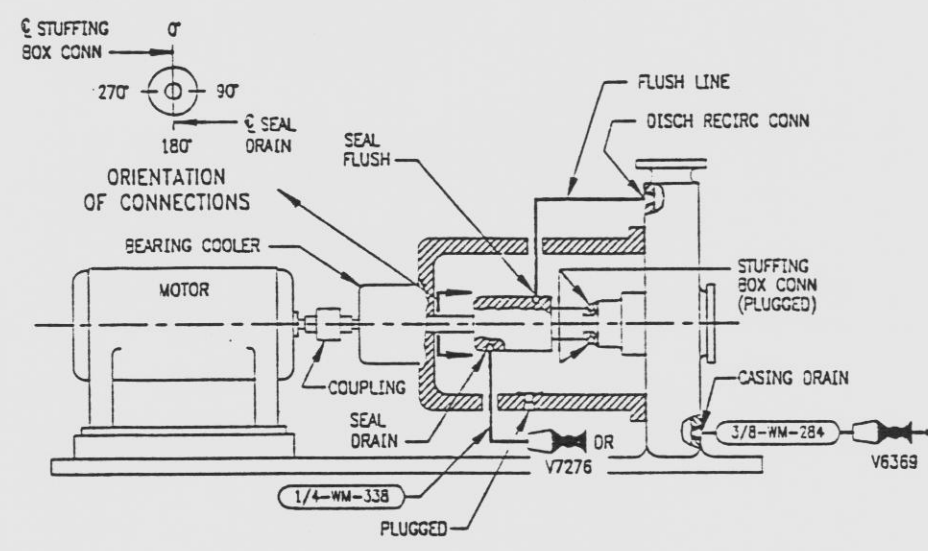
2998-G-078
SH 105C



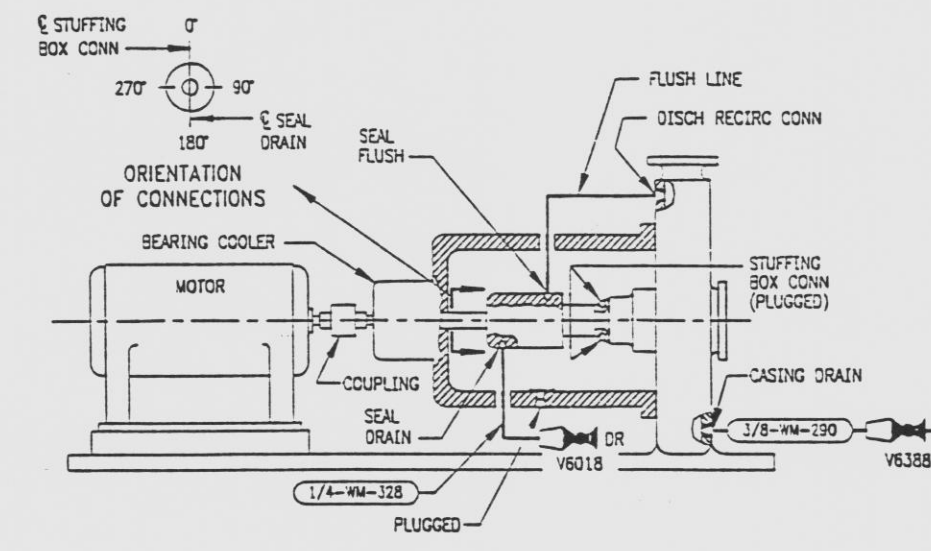
BORIC ACID MAKEUP PUMP 2A



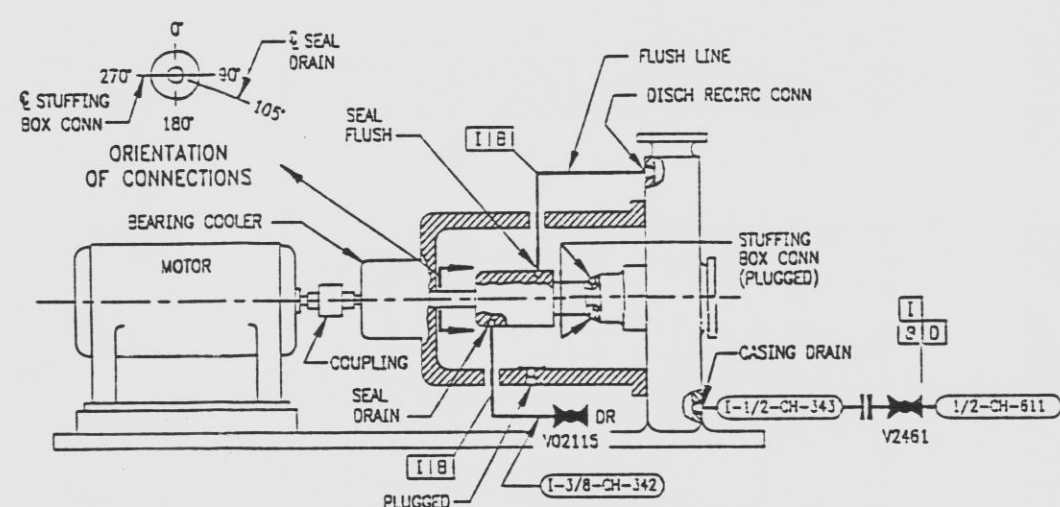
FUEL POOL PURIFICATION PUMP



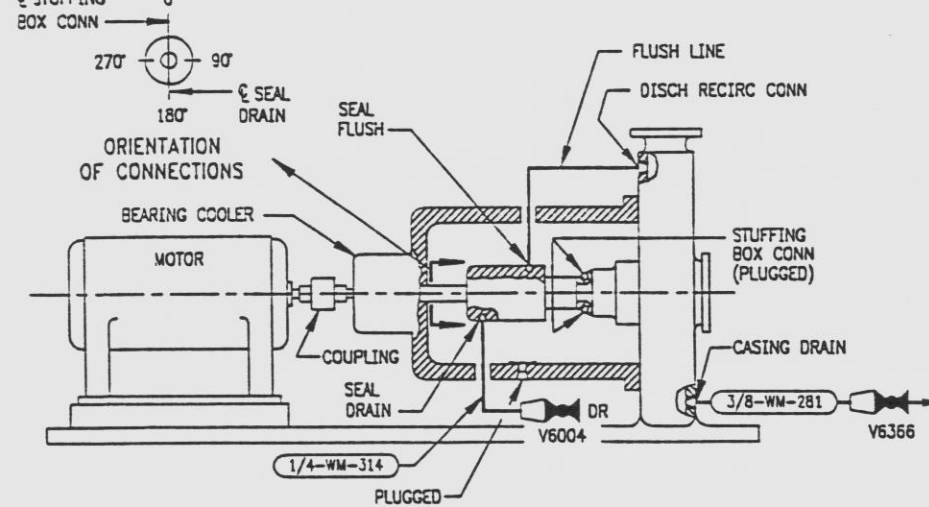
BORIC ACID HOLDING PUMP 2A



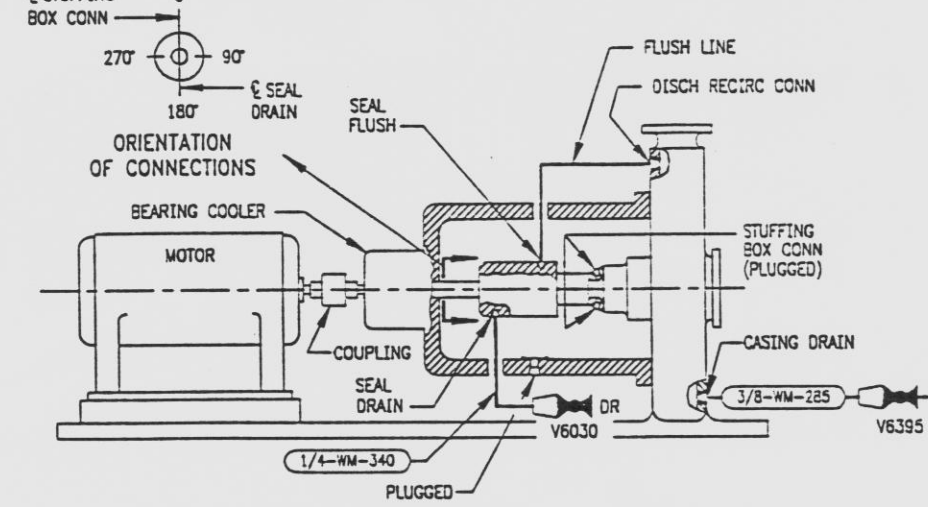
EQUIPMENT DRAIN PUMP 2C



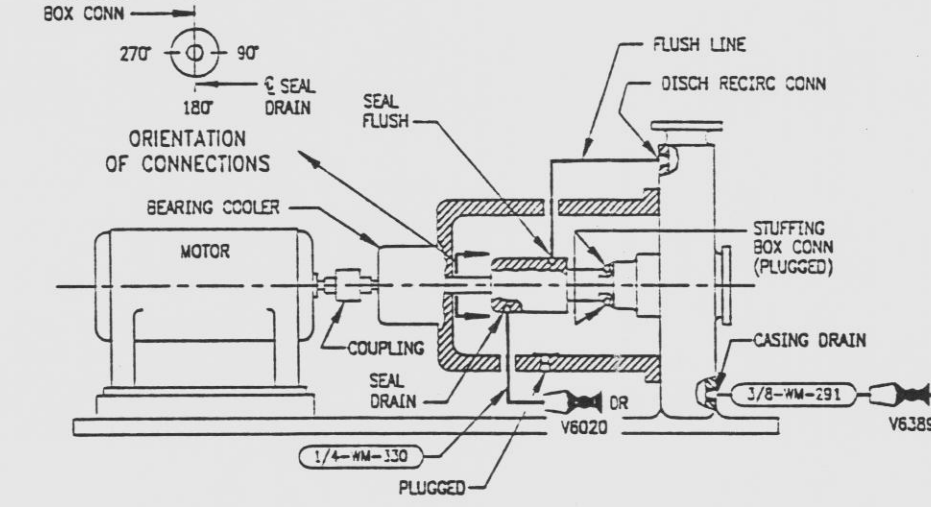
BORIC ACID MAKEUP PUMP 2B



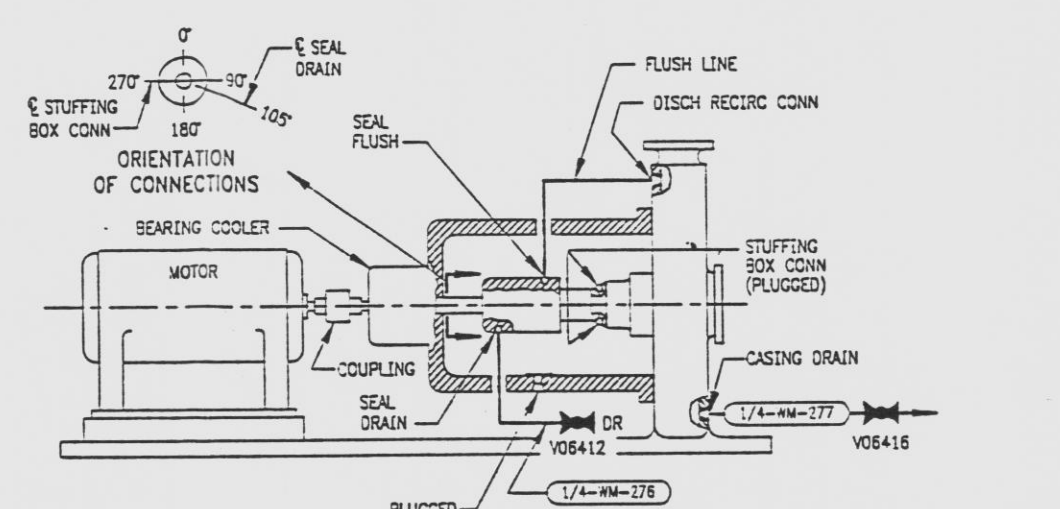
FUEL POOL PURIFICATION PUMP



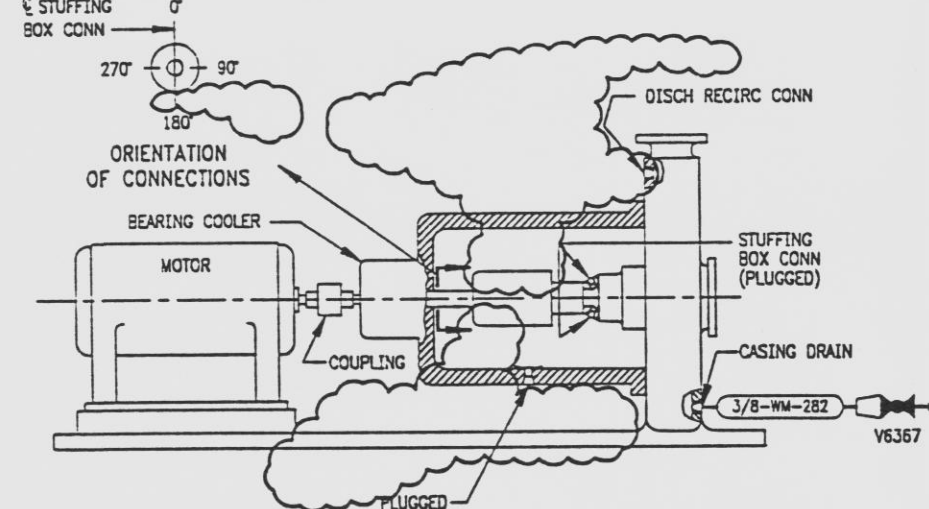
BORIC ACID HOLDING PUMP 2B



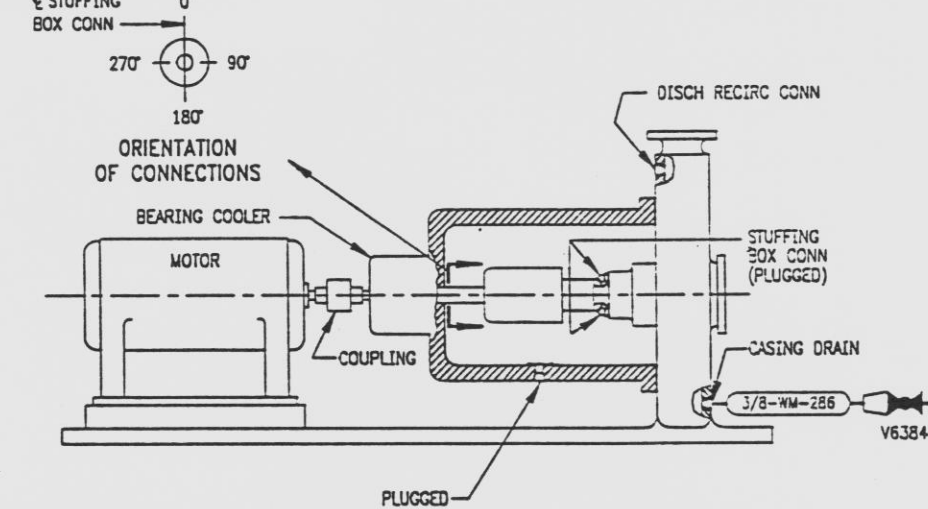
EQUIPMENT DRAIN PUMP 2C



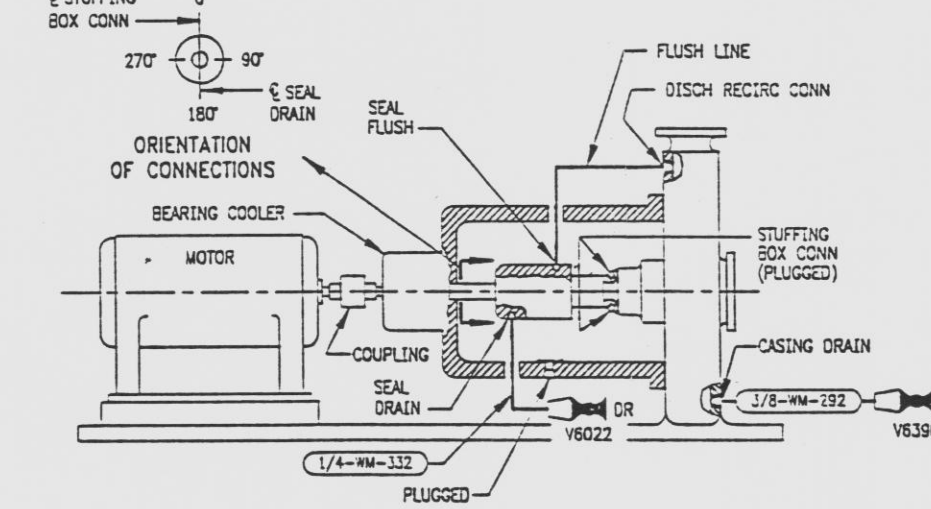
FLASH TANK PUMP 2A



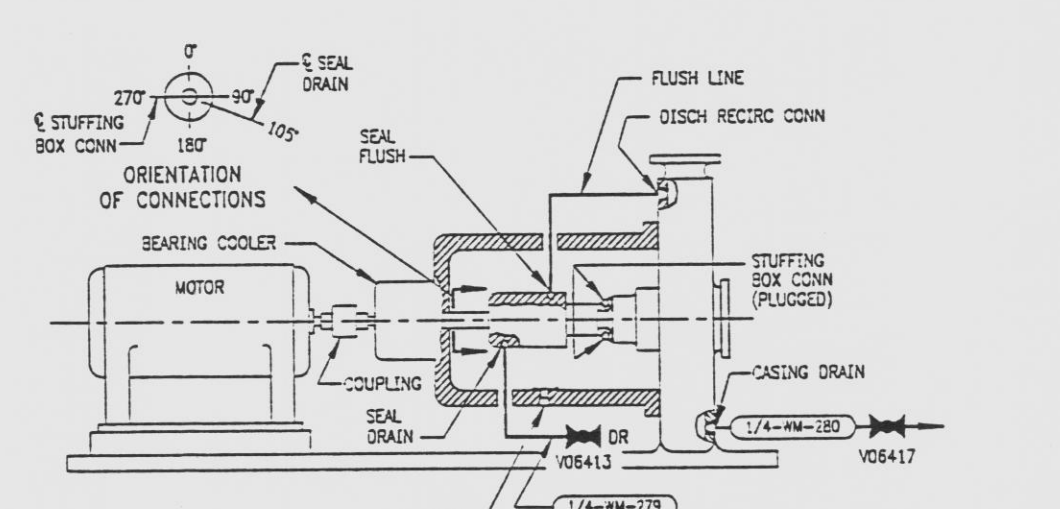
HOLDUP DRAIN PUMP 2A



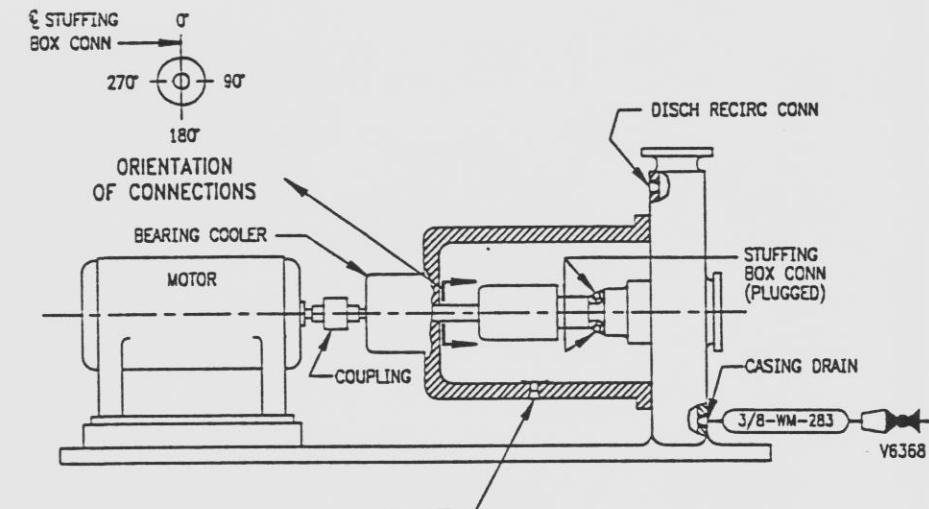
BORIC ACID HOLDING PUMP 2B



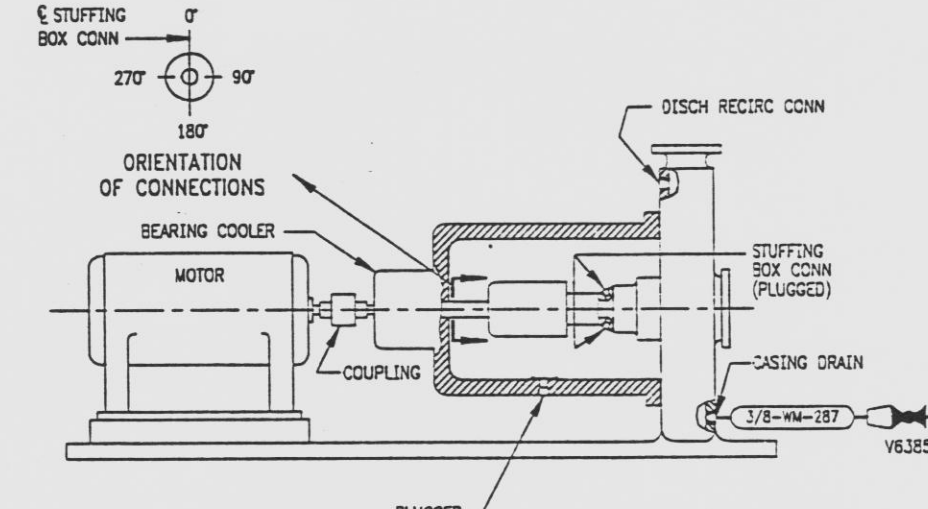
CHEMICAL DRAIN PUMP 2A



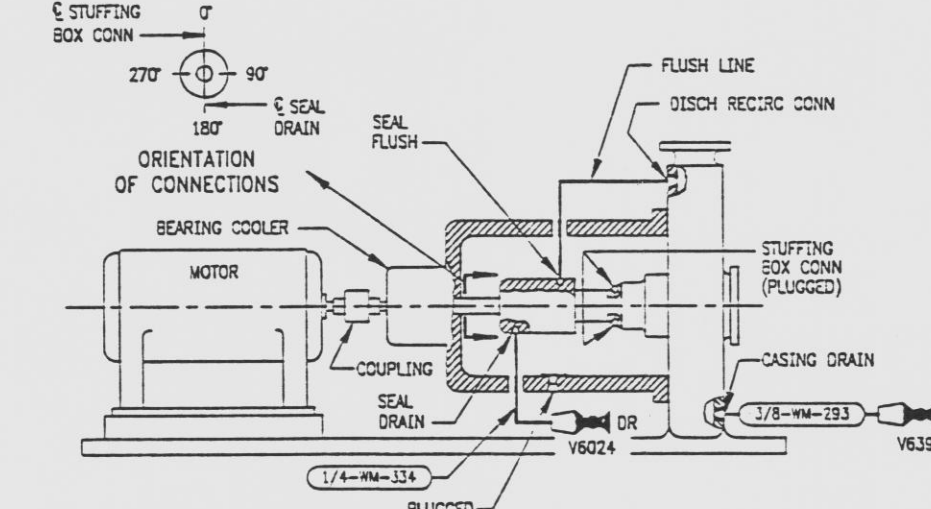
FLASH TANK PUMP 2B



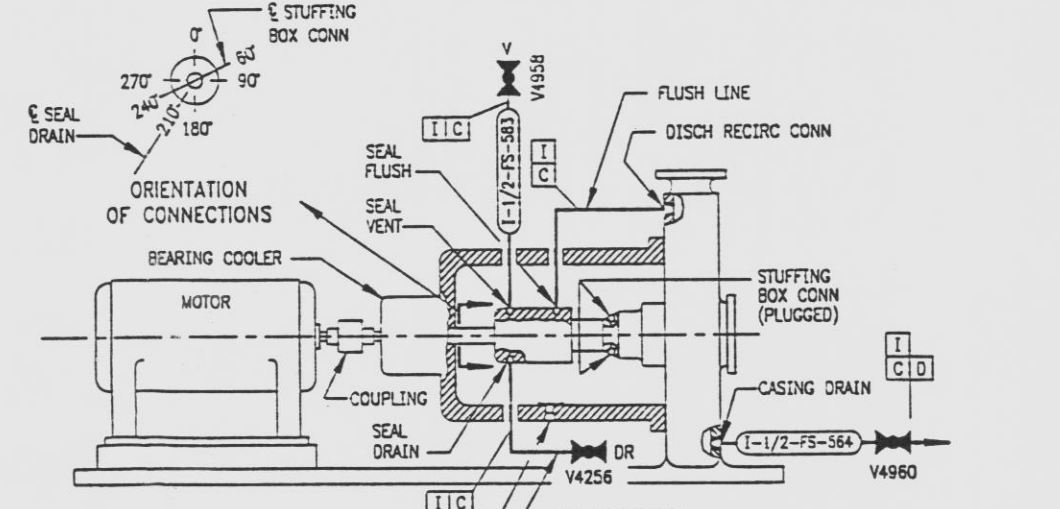
HOLDUP DRAIN PUMP 2B



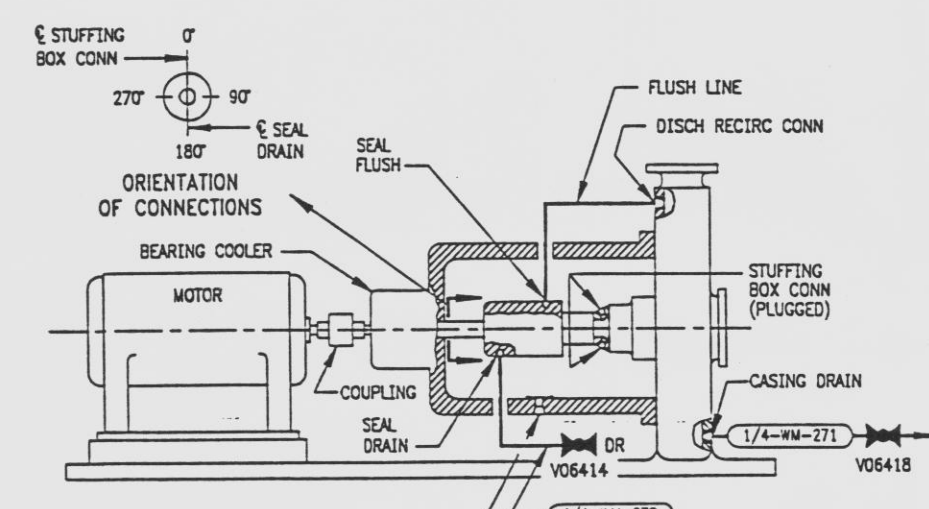
BORIC ACID HOLDING PUMP 2B



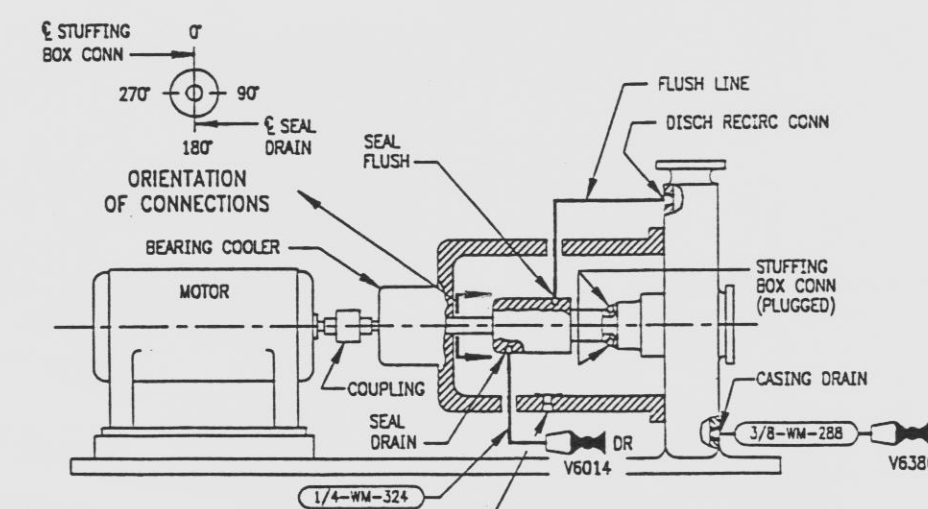
LAUNDRY DRAIN PUMP 2A



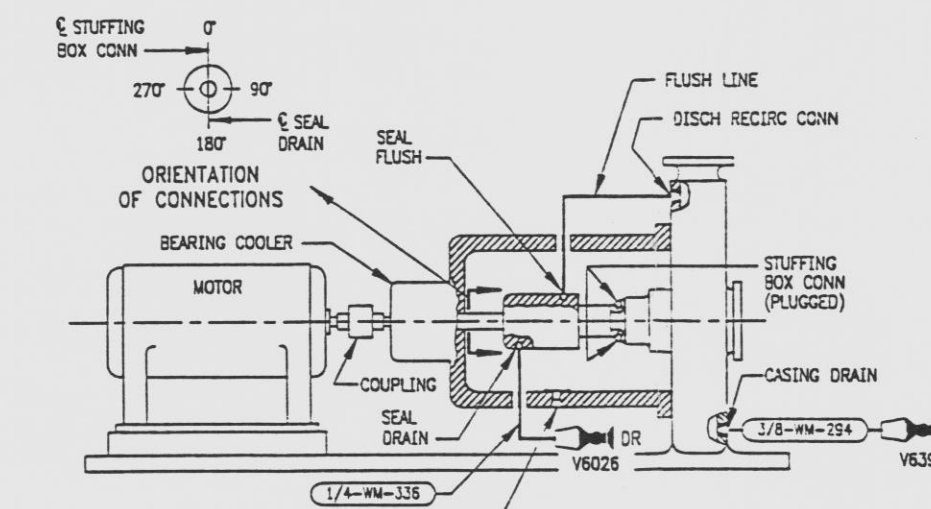
FUEL POOL PUMP 2A



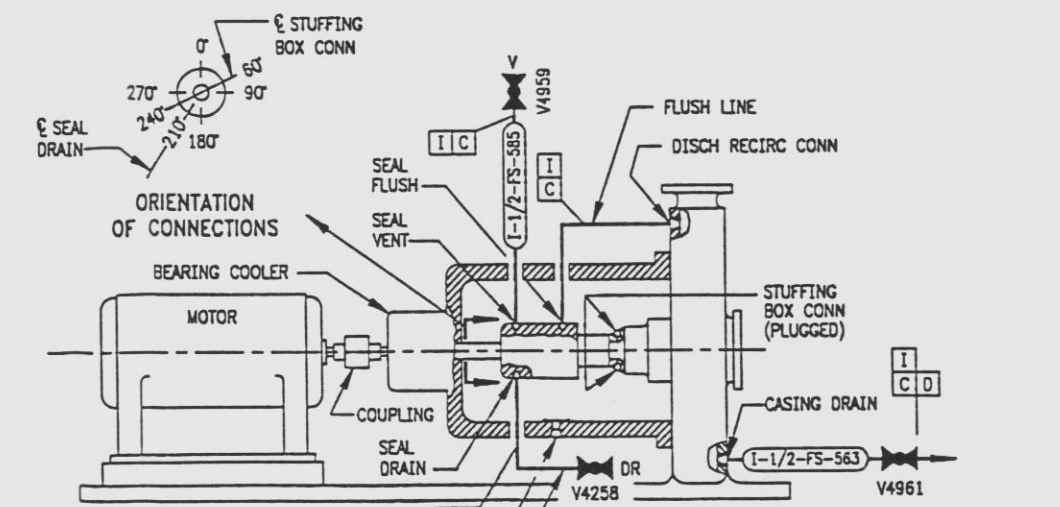
REACTOR DRAIN PUMP 2A



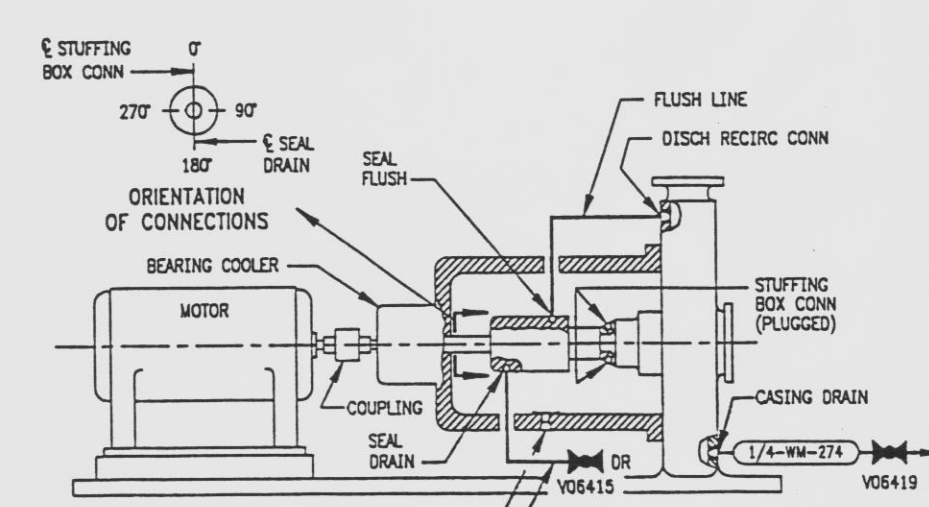
EQUIPMENT DRAIN PUMP 2A



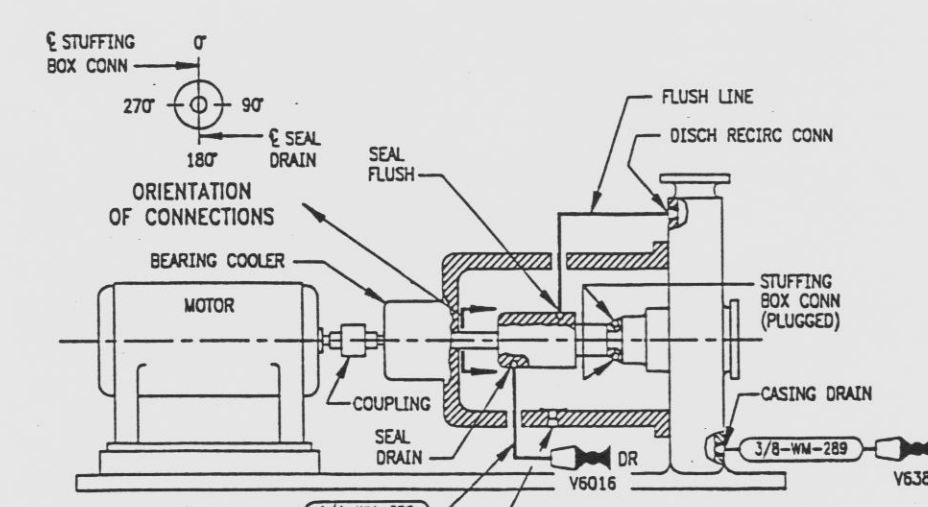
WASTE CONDENSATE PUMP 2A



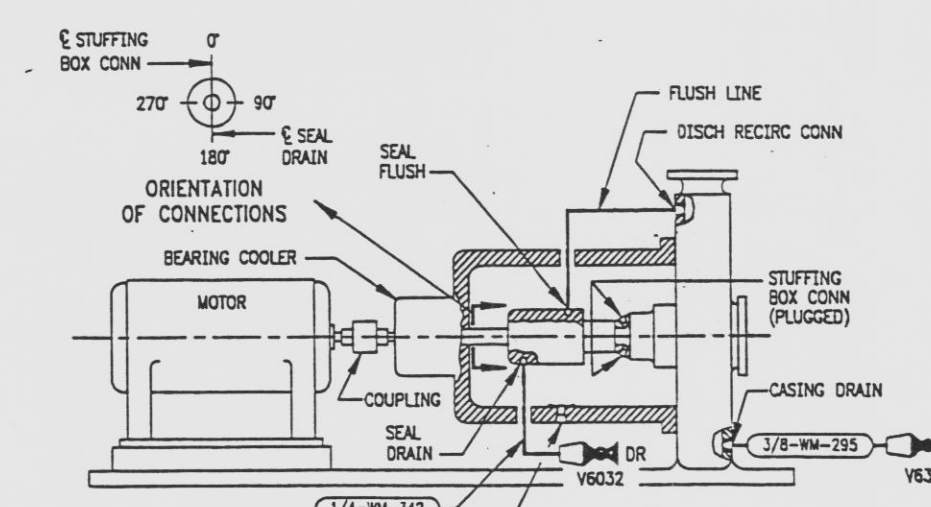
FUEL POOL PUMP 2B



REACTOR DRAIN PUMP 2B



EQUIPMENT DRAIN PUMP 2B



WASTE CONDENSATE PUMP 2B

REVISIONS					
NO	DATE	DESCRIPTION	BY	CH	APPROVED
11	7/24/95		BB	DWC	JIZ
ROR-SLW-34-052: REDRAWN					
12	7/21/97		GM	HS	SHM
ROR-SLW-34-052: DEL: (B3) PIPING AND VALVE					
13	8/25/97		GM	HS	VFR
CON 27000-5885: DEL: (E5) PIPING AND VALVE					
CON 27000-5882: DEL: (E3) PIPING AND VALVE					
CON 27000-5883: DEL: (D5) PIPING AND VALVE					
14	8/25/97		GM	HS	PA
CON 27000-5882: DEL: (D3) PIPING AND VALVE					

OCT 30 1997
RAYTHEON ENGINEERS & CONSTRUCTORS, INC.

REFERENCE DRAWINGS
PIPE, VALVE & INSTRUMENT SYMBOLS 2998-G-078 SH 100
VALVE LIST 2998-G-051
LINE LIST 2998-G-052
VALVE OPERATIONAL NUMBER INDEX 2998-G-057A
INSTRUMENT INSTALLATION DETAILS 2998-G-231
INSTRUMENT LIST 2998-G-270C

INFORMATION ONLY
VERIFY WITH A CONTROLLED COPY BEFORE USE.

NOTE:
THIS DRAWING IS MADE FROM REV. 10
OF DRAWING 2998-G-078 SH 105C

REVISION OF THIS DRAWING MAY REQUIRE UPDATE OF THE FOLLOWING DOCUMENTS: FSAR FIGURE 1.2-34

NUCLEAR SAFETY RELATED IN PART ONLY

FLORIDA POWER & LIGHT COMPANY
ST. LUCIE PLANT
1983 - 890 MW EXTENSION - UNIT 2
FLOW DIAGRAM
AUXILIARY PUMPS

SCALE: NONE	APPROVAL	DATE
DR: B. BLUM		2998-G-078
CR: CURNINGHAM		SHEET 105C

RAYTHEON ENGINEERS & CONSTRUCTORS, INC.

97120 40015 124 E