

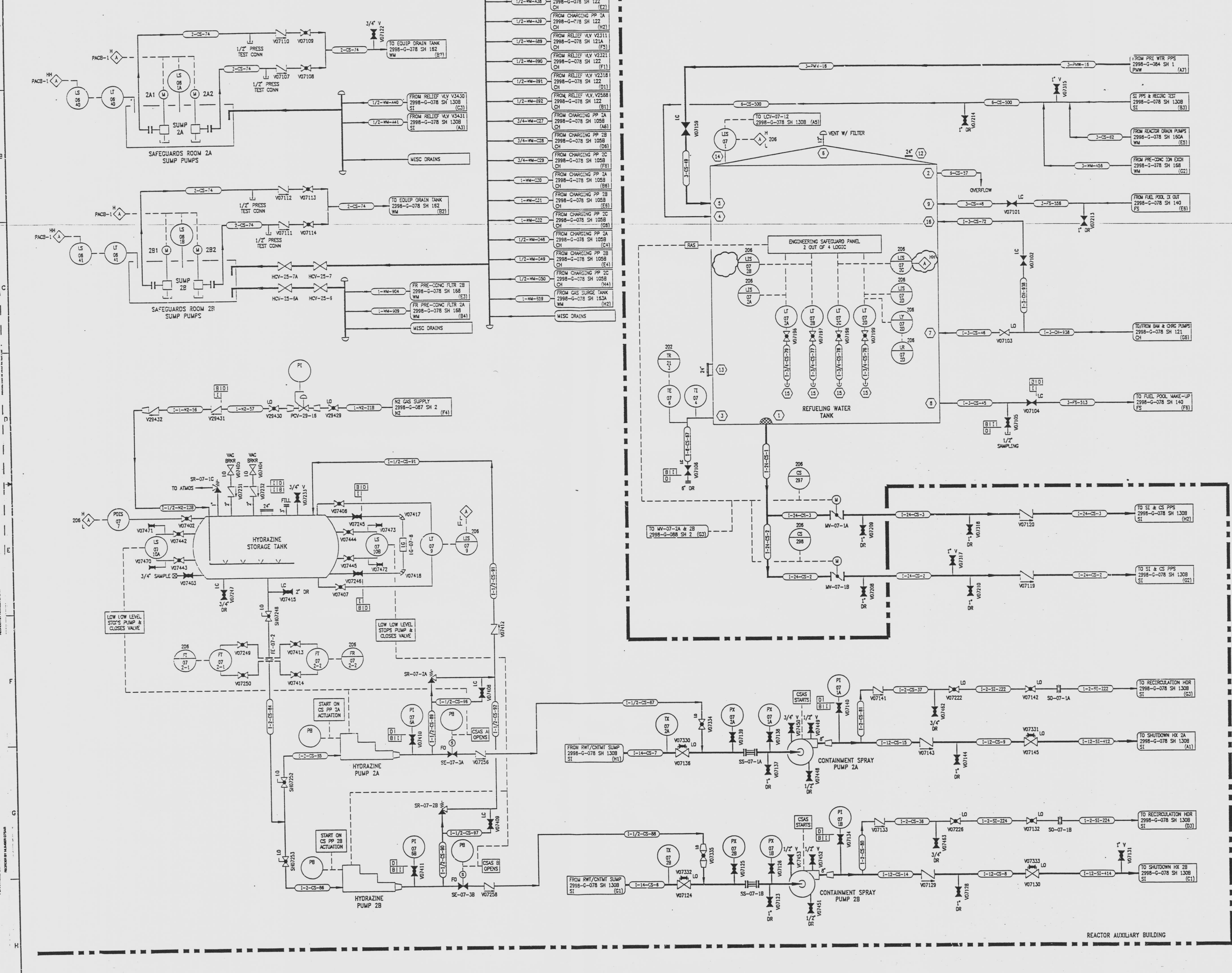
2998-G-088
SH 1

DRAWING NUMBER
2998-G-088
SH 1

DRAWING NUMBER
2998-G-088
SH 1

DRAWING NUMBER
2998-G-088
SH 1

DRAWING NUMBER
2998-G-088
SH 1



REVISIONS				
NO	DATE	DESCRIPTION	BY	APPROVED
23	7/24/95	2998-G-088-001: REVISION	CM	RR
24	12/14/95	2998-G-088-002: DELETE REFERENCE AND LINE FROM V2507 AND V2439 (E1)	PM	CM
25	4/17/96	2998-G-088-003: ADD (96) VALVE W/LOC LC	CM	HS
26	10/1/96	2998-G-088-004: ADD (96) VALVE W/LOC LC	HS	CM
27	11/9/96	2998-G-088-005: ADD (E1.5) VALVES	CM	PM
28	5/2/97	2998-G-088-006: DEL (95) REDUCERS	CM	HS
29	9/16/97	2998-G-088-007: REV (95.08) INVT. LOCATION	CM	HS

REFERENCE DRAWINGS
 PIPE, VALVE & INSTRUMENT SYMBOLS 2998-G-078 SH 100
 VALVE LIST 2998-G-051
 LINE LIST 2998-G-052
 VALVE OPERATIONAL NUMBER INDEX 2998-G-053
 INSTRUMENT INSTALLATION DETAILS 2998-G-211
 INSTRUMENT LIST 2998-G-270C

INFORMATION ONLY
 VERIFY WITH A CONTROLLED COPY BEFORE USE.

NOTE: THIS DRAWING IS MADE FROM REV. 22 OF DRAWING 2998-G-088.

REVISION OF THIS DRAWING MAY REQUIRE UPDATE OF THE FOLLOWING DOCUMENT: FSAR FIGURE 6.2-41

NUCLEAR SAFETY RELATED IN PART ONLY

FLORIDA POWER & LIGHT COMPANY
 ST. LUCIE PLANT
 1983 - 890 MWe EXTENSION - UNIT 2
 FLOW DIAGRAM
 CONTAINMENT SPRAY AND
 REFUELING WATER SYSTEMS

SCALE	APPROVAL	DATE
AS SHOWN	DR. S. SLATT	2998-G-088
	CH. J. JENNINGS	29

97120400B -08 E