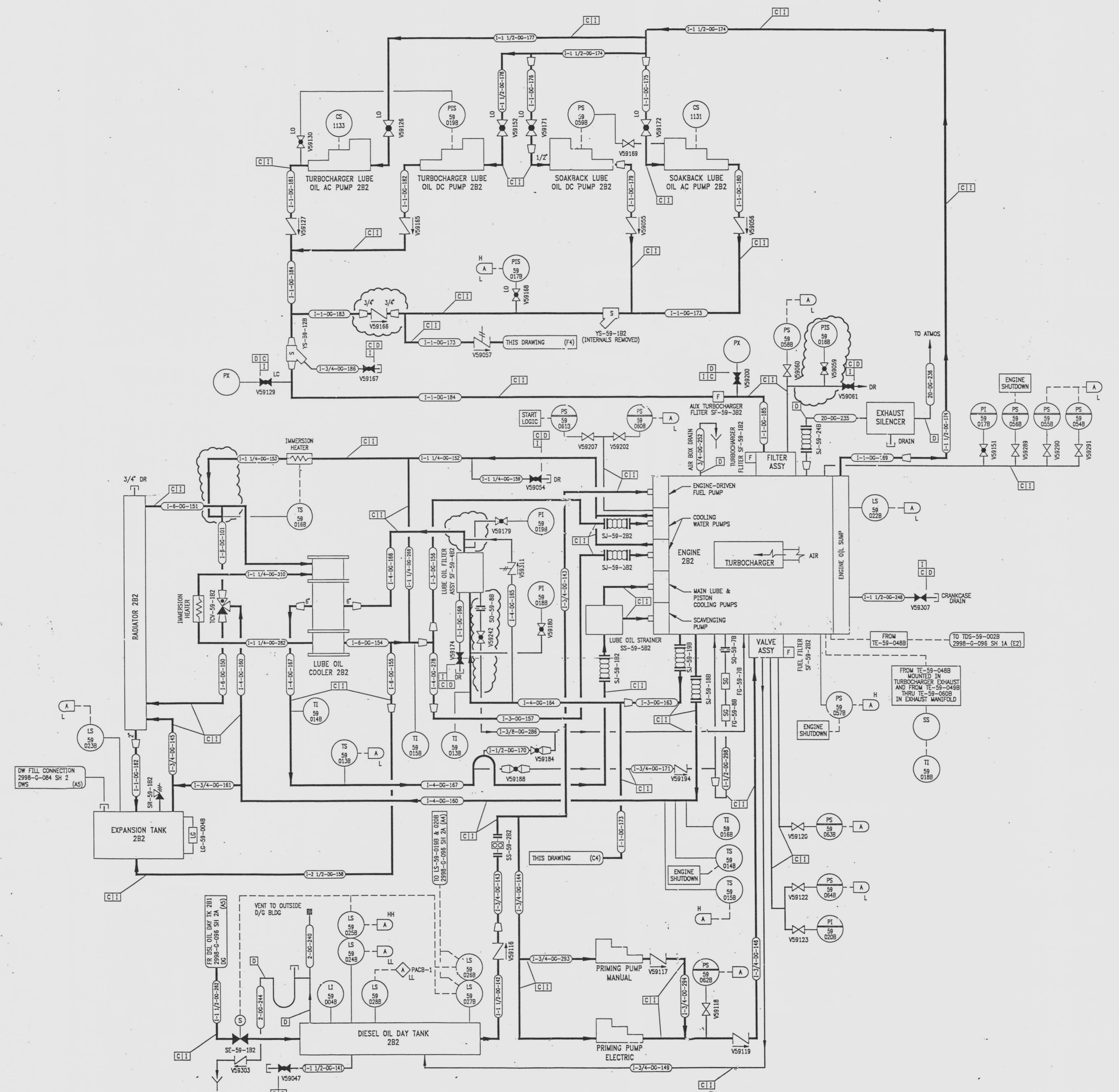


| REVISIONS | | | | |
|-----------|---------|--|-----|----------|
| NO | DATE | DESCRIPTION | BY | APPROVED |
| 5 | 7/2/95 | | DAC | DWC |
| 6 | 12/8/95 | DCR-SLM-84-057: RARRN | CH | TWS |
| 7 | 12/8/95 | PC/M 075-285 REV. 13 C-182 TO SHOW INTERNALS REMOVED (C4) | CH | HS |
| 8 | 8/8/96 | CRN 98037-6035; DEL: (F4) LO | HJF | HS |
| 9 | 2/2/97 | CRN 98037-6490; ADD: (C3) REDUCERS, REV (05) VLV LOC. (E4) ORIFICE LOCATION, (D2,D4) BRANCH LINE | GM | GM |



JUN 20 1997

NOTE
LOCAL ALARMS ARE GROUPED ON A LOCAL PANEL.
THE LOCAL PANEL HAS AN ANNUNCIATOR IN THE
CONTROL ROOM ON RTG5 201.

- REFERENCE DRAWINGS
- PIPE, VALVE & INSTRUMENT SYMBOLS 2998-G-078 SH 100
 - VALVE LIST 2998-A-051
 - LINE LIST 2998-B-052
 - VALVE NUMBER OPERATIONAL NUMBER INDEX 2998-B-057A
 - INSTRUMENT INSTALLATION DETAILS 2998-B-231
 - INSTRUMENT LIST 2998-B-270C

NOTE:
THIS DRAWING IS MADE FROM REV. 5
OF DRAWING 2998-G-096 SH 2

REVISION OF THIS DRAWING MAY REQUIRE UPDATE OF
THE FOLLOWING DOCUMENT: F4/R FIGURE 9.5-8

**NUCLEAR SAFETY RELATED
IN PART ONLY**

FLORIDA POWER & LIGHT COMPANY
ST LUCIE PLANT
1983 - 890 MWe EXTENSION - UNIT 2
FLOW DIAGRAM
EMERGENCY DIESEL GENERATOR SYSTEM
DIESEL ENGINE 2B2

| | |
|---|------------------|
| RAYTHEON ENGINEERS & CONSTRUCTORS, INC. | |
| SCALE: NONE | DATE: |
| DWG. NO: 2998-G-096 | DATE: 2998-G-096 |
| DR: D. CHEFFI | SHEET 2B |
| CH: CLANNINGHAM | 9 |

INFORMATION
ONLY
VERIFY WITH A CONTROLLED
COPY BEFORE USE.

Docket # 50-389
Accession # 9712240015
Date 11/24/97
Regulatory Docket File

DRAWING NUMBER
2998-G-096
SH 2B

DRAWING NUMBER
2998-G-096
SH 2B

DRAWING NUMBER
2998-G-096
SH 2B

NUMBER
2998-G-096
SH 2B