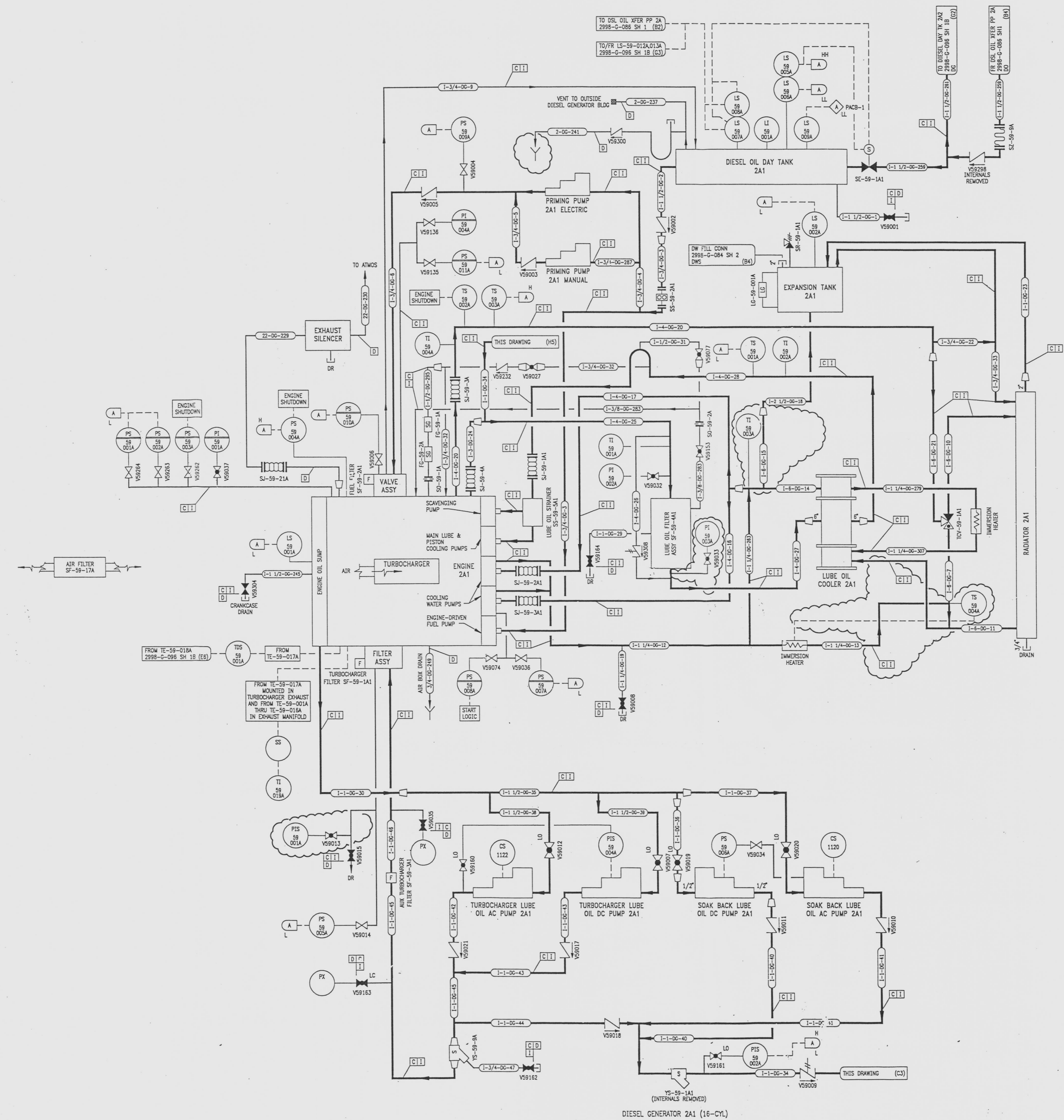


| REVISIONS | | | | |
|------------------------------------------------------------------------------------------------------------------|---------|-------------|-------|----------|
| NO | DATE | DESCRIPTION | BY | APPROVED |
| 7 | 7/24/95 | DAC POB | | JJZ |
| DCR-SLW-94-052: REDRAWN | | | | |
| 8 | 12/8/95 | PAB HS | | TWS |
| PC/M 075-285: REV. YS-59-1A1 TO SHOW INTERNALS REMOVED (H4) | | | | |
| 9 | 8/8/96 | HJF HS | | JJZ |
| CRN 86037-8035: DEL: (C4) LO | | | | |
| 10 | | | AN GW | |
| CON 36037-8499: REV: (S3) DRAIN, (F3) VALVE LOCATION (D5) INSTRUMENT LOCATION, (E5) BRANCH LINE (E4) BRANCH LINE | | | | |

DRAWING NUMBER
2998-G-096
SH-1A
PLANT FIELD OPERATIONS
RECORDED BY PLANT FIELD OPERATIONS

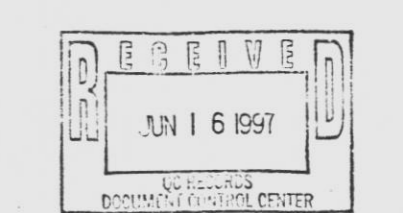
DRAWING NUMBER
2998-G-096
SH-1A
PLANT FIELD OPERATIONS
RECORDED BY PLANT FIELD OPERATIONS

NUMBER
2998-G-096
SH-1A
PLANT FIELD OPERATIONS
RECORDED BY PLANT FIELD OPERATIONS



NOTE
LOCAL ALARMS ARE GROUPED ON A LOCAL PANEL.
THE LOCAL PANEL HAS AN ANNUNCIATOR IN THE
CONTROL ROOM ON RTG3 201.

- REFERENCE DRAWINGS
- PIPE, VALVE & INSTRUMENT SYMBOLS 2998-G-076 SH 100
 - VALVE LIST 2998-A-051
 - LINE LIST 2998-B-052
 - VALVE OPERATIONAL NUMBER INDEX 2998-B-057A
 - INSTRUMENT INSTALLATION DETAILS 2998-B-231
 - INSTRUMENT LIST 2998-B-270C



NOTE
THIS DRAWING IS MADE FROM REV. 6
OF DRAWING 2998-G-096 SH 1

REVISION OF THIS DRAWING MAY REQUIRE UPDATE OF
THE FOLLOWING DOCUMENT: FSAR FIGURE 9.5-7

INFORMATION ONLY
VERIFY WITH A CONTROLLED COPY BEFORE USE.

NUCLEAR SAFETY RELATED IN PART ONLY

FLORIDA POWER & LIGHT COMPANY
ST LUCIE PLANT
1983 - 890 MW EXTENSION UNIT 2
FLOW DIAGRAM
DIESEL GENERATOR SYSTEM
DIESEL ENGINE 2A1

| | |
|-----------------------------------------|----------|
| RAYTHEON ENGINEERS & CONSTRUCTORS, INC. | |
| SCALE: NONE | APPROVAL |
| DATE: 2998-G-096 | |
| DR: D. CHEFF | SHEET 1A |
| CH: P. BERGERON | 10 |