

2998-G-086
SH 1

REVISIONS

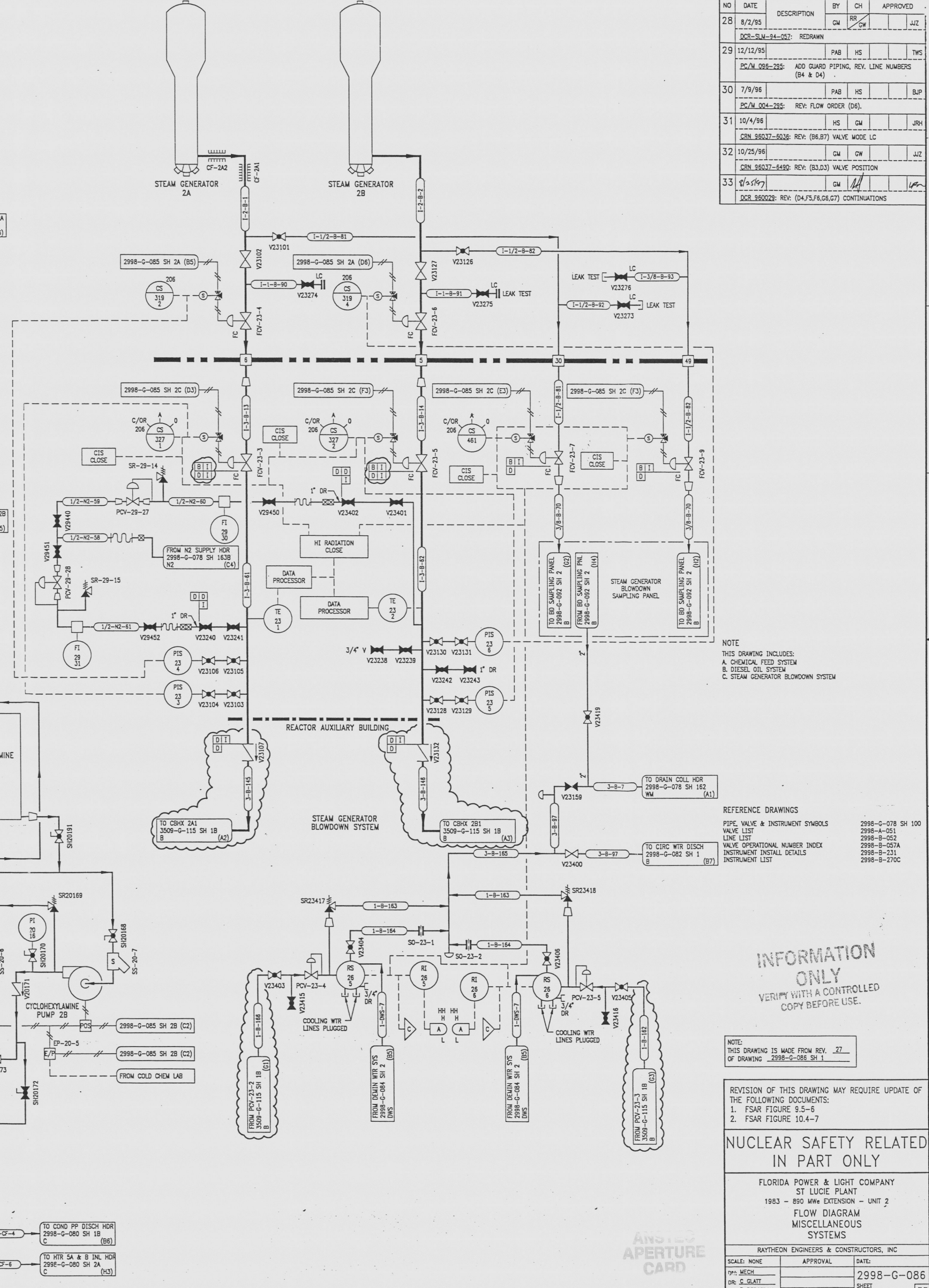
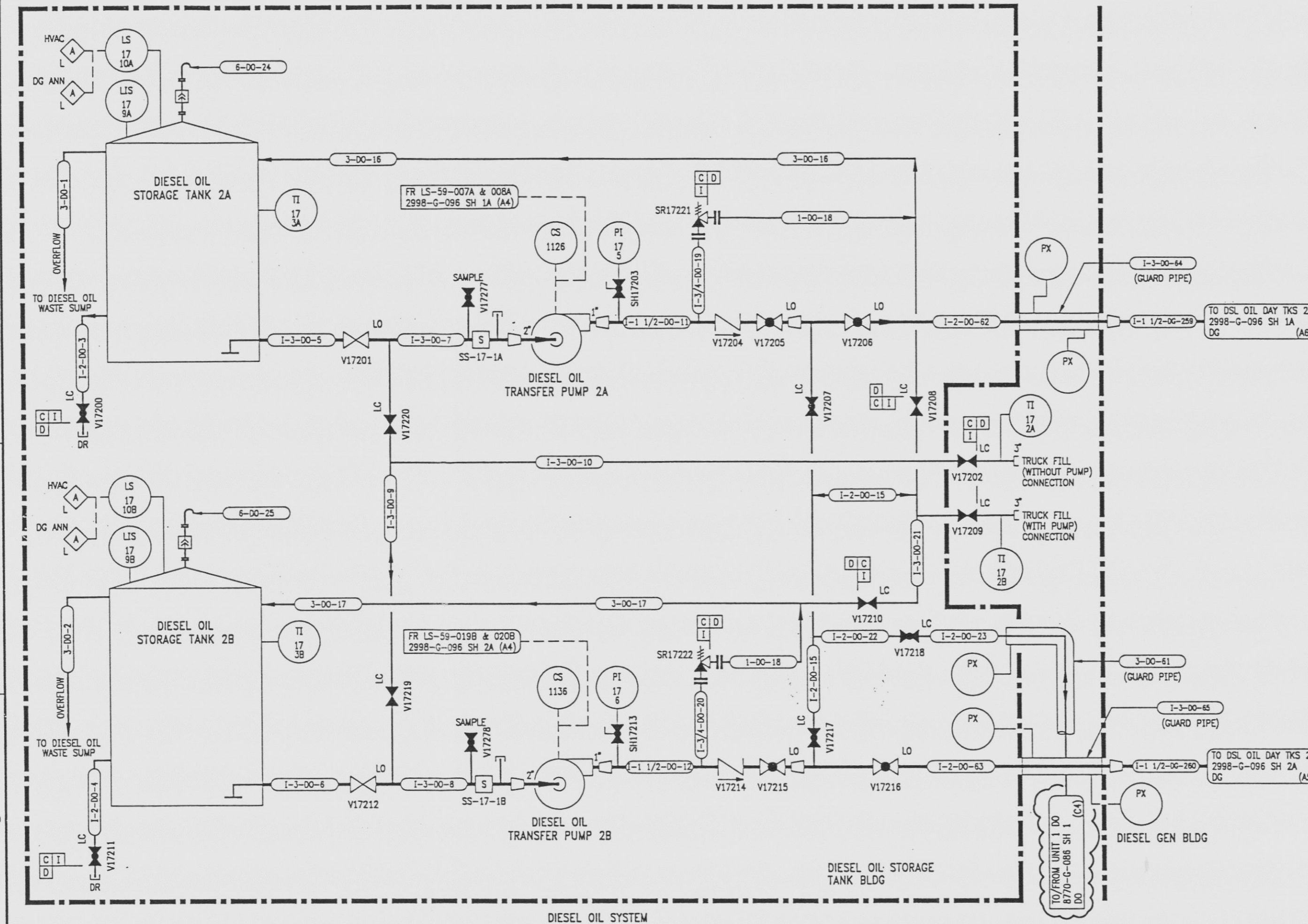
NO	DATE	DESCRIPTION	BY	CH	APPROVED
28	8/2/95	DCR-SM-34-067: REDRAWN	GM	RR	JJZ
29	12/12/95	PC/M 098-295: ADD GUARD PIPING, REV. LINE NUMBERS (B4 & C4)	PAB	HS	TWS
30	7/9/96	PC/M 004-295: REV. FLOW ORDER (D6)	PAB	HS	BJP
31	10/4/96	CRN 95037-5036: REV. (B6,B7) VALVE MODE LC	HS	GM	JRH
32	10/25/96	CRN 95037-5490: REV. (B3,D3) VALVE POSITION	GM	GW	JJZ
33	8/2/97	DCR 95029: REV. (D4,F3,F6,G6,G7) CONTINUATIONS	GM		

DRAWING NUMBER

2998-G-086
SH. 1

DRAWING NUMBER

NUMBER



NOTE
THIS DRAWING INCLUDES:
A. CHEMICAL FEED SYSTEM
B. DIESEL OIL SYSTEM
C. STEAM GENERATOR BLOWDOWN SYSTEM

REFERENCE DRAWINGS
PIPE, VALVE & INSTRUMENT SYMBOLS LIST
VALVE OPERATIONAL NUMBER INDEX
INSTRUMENT INSTALL DETAILS
INSTRUMENT LIST

INFORMATION ONLY
VERIFY WITH A CONTROLLED COPY BEFORE USE.

NOTE:
THIS DRAWING IS MADE FROM REV. 27
OF DRAWING 2998-G-086 SH 1

REVISION OF THIS DRAWING MAY REQUIRE UPDATE OF THE FOLLOWING DOCUMENTS:
1. FSAR FIGURE 9.5-5
2. FSAR FIGURE 10.4-7

NUCLEAR SAFETY RELATED IN PART ONLY

FLORIDA POWER & LIGHT COMPANY
ST LUCIE PLANT
1983 - 890 MWe EXTENSION - UNIT 2
FLOW DIAGRAM MISCELLANEOUS SYSTEMS

RAYTHEON ENGINEERS & CONSTRUCTORS, INC.
SCALE: NONE
APPROVAL: DATE: 2998-G-086
DR: C. GRATT
CH: P. BERGERON
SHEET 33

E 971 204 0015-0