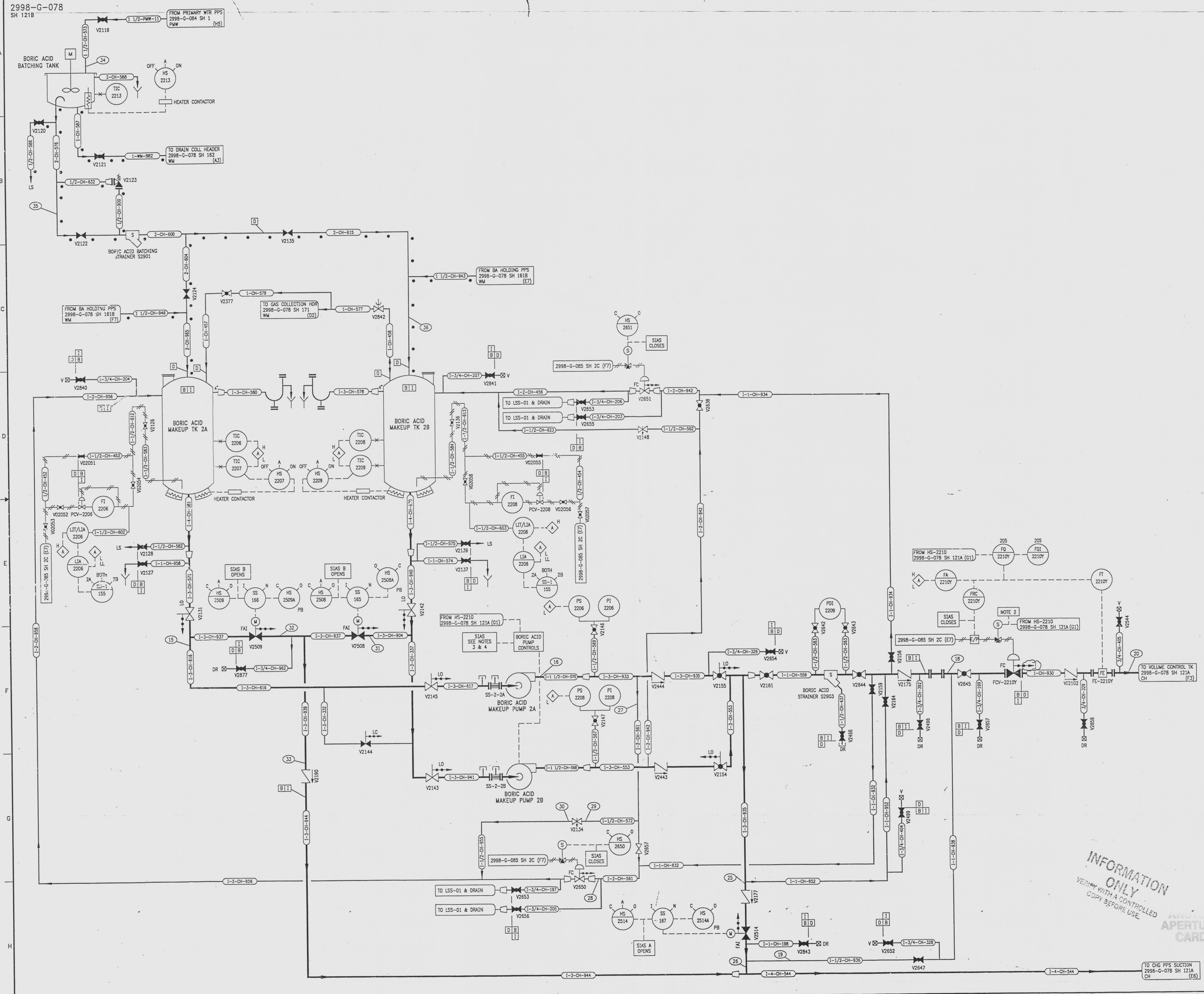
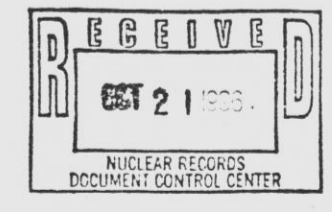


REVISIONS				
NO	DATE	DESCRIPTION	BY	APPROVED
17	7/24/95		GM	RR
DCR-94-052: REBANK				
18	10/4/96		GM	HS
DCR-96037-6038: ADD: (F3) VALVE MODE 'LC', (F3, F5, G3, G5) VALVE MODE 'LO'				
19	01/09/96		GM	Ad
DCR-960228: ADD: (F6) SAPPED LEAKOFF LINE				



- NOTES
- FOR ADDITIONAL NOTES AND REFERENCE DRAWINGS SEE 2998-G-078 SH 121A.
 - BATCHING SWITCH FOIS-2210Y CLOSURES FCV-2210Y AT END OF BORATE BATCH.
 - WHEN OPERATING FROM THE CONTROL ROOM WITH THE SELECTOR SWITCH IN THE "NORMAL" POSITION AND AN SIAS OCCURS WITH A LOSS OF OFFSITE POWER, BOTH BORIC ACID MAKEUP PUMPS 2A & 2B START AUTOMATICALLY ZERO SECONDS AFTER THE EMERGENCY DIESEL GENERATOR 2A CRACKER CLOSURE, PROVIDED THE PUMP CONTROL SWITCH IS SET TO EITHER "RUN" OR "AUTO". THEY WILL NOT START AUTOMATICALLY IF THE PUMP CONTROL SWITCH IS IN "OFF/RESET" POSITION.
 - WHEN OPERATING FROM THE CONTROL ROOM WITH THE SELECTOR SWITCH IN THE "NORMAL" POSITION AND AN SIAS OCCURS WITH OFFSITE POWER AVAILABLE, BOTH BORIC ACID MAKEUP PUMPS 2A & 2B START AUTOMATICALLY WITH NO TIME DELAY, PROVIDED THE PUMP CONTROL SWITCH IS SET TO EITHER "RUN" OR "AUTO". THEY WILL NOT START AUTOMATICALLY IF THE PUMP CONTROL SWITCH IS IN THE "OFF/RESET" POSITION.



NOTE: THIS DRAWING IS MADE FROM REV. 16 OF DRAWING 2998-G-078 E-12.

REVISION OF THIS DRAWING MAY REQUIRE UPDATE OF THE FOLLOWING DOCUMENTS: FSAR FIGURE 9.3-5.

NUCLEAR SAFETY RELATED IN PART ONLY

FLORIDA POWER & LIGHT COMPANY
ST LUCIE PLANT
1983 - 890 MW EXTENSION - UNIT 2
FLOW DIAGRAM
CHEMICAL & VOLUME CONTROL SYSTEM

RAYTHEON ENGINEERS & CONSTRUCTORS, INC

SCALE: NONE	APPROVAL	DATE:
DNV: MECH		2998-G-078
DR: J. CHSFT		SHEET
CH: GANNINGHAM		121B

INFORMATION ONLY
VERIFY WITH A CONTROLLED COPY BEFORE USE.

DRAWING NUMBER
2998-G-078
SH 121B

DRAWING NUMBER
2998-G-078
SH 121B

DRAWING NUMBER
2998-G-078
SH 121B

NUMBER

9112040015-04 E