

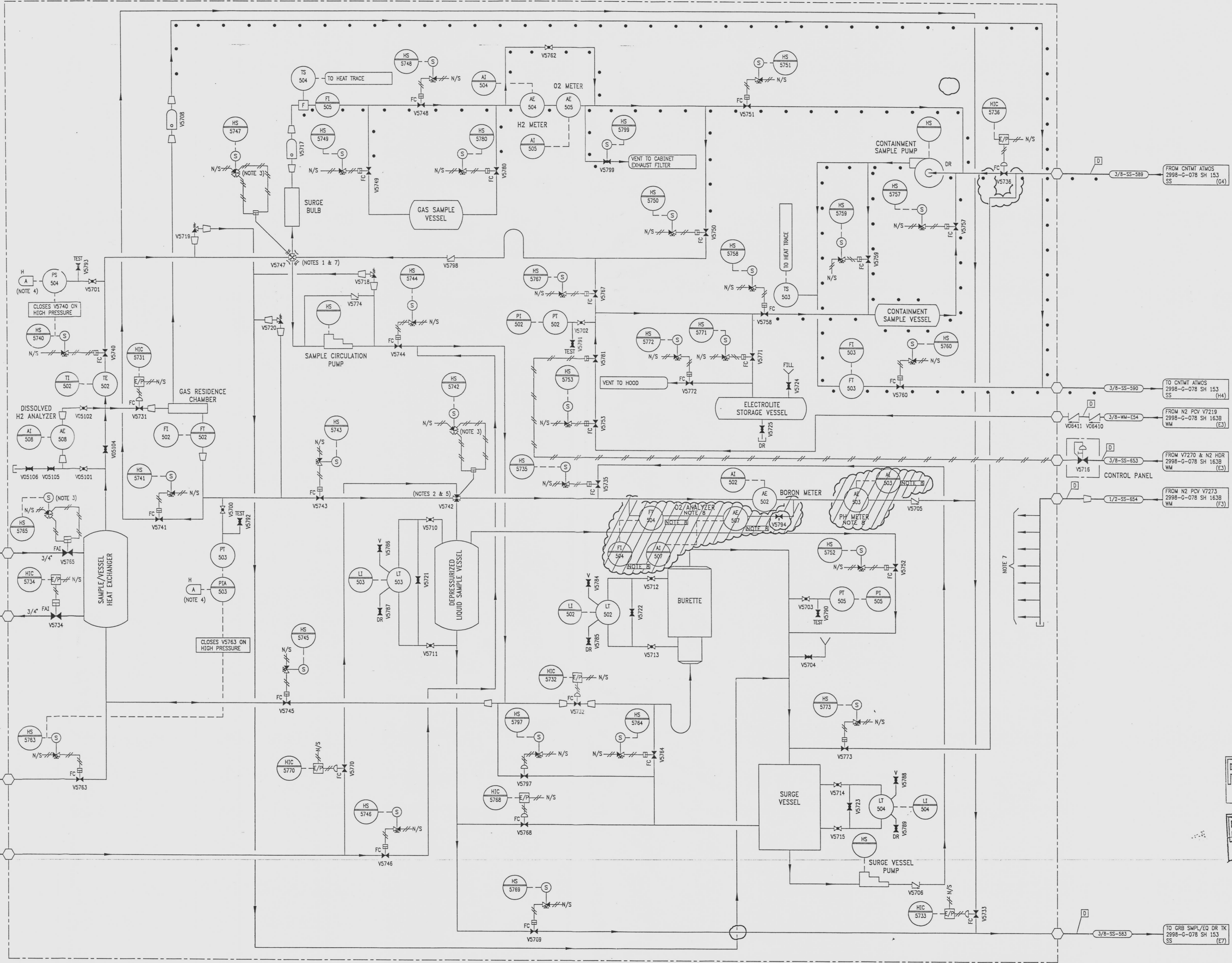
REVISIONS				
NO	DATE	DESCRIPTION	BY	APPROVED
4	7-24-95		BB	DWC
DCR-SLM-94-027 REDRAWN				
5	8/15/97		GM	Sublet

PC/M 57048; REV. (88) PIPING, (E5,E6) ABANDONED AND ADD NOTE B, DEL. (E6) DRAWING CORRECTION

DRAWING NUMBER
2998-G-078
SH 152

DRAWING NUMBER
2998-G-078
SH 152

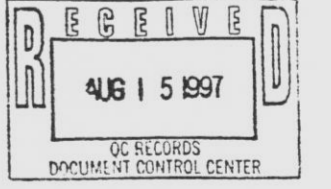
3 NUMBER



- NOTES
- DESIGNATES A 4-WAY VALVE; FLOW ENTERING THE VALVE WILL CONTINUE AT 90° TURNS ONLY. POSITIONING OF THE VALVE WILL ALLOW FLOW TO PASS EITHER ONE WAY (N) SINGLE ARROW OR THE OTHER WAY (S) DOUBLE ARROW. THE SINGLE ARROW DEPICTS THE NORMAL POSITION.
 - DESIGNATES A 4-WAY VALVE WITH NORMAL POSITION ALLOWING STRAIGHT THROUGH FLOW AND THE OTHER POSITION ALLOWING FLOW THROUGH THE VERTICALLY PATH SHOWN.
 - DESIGNATES A 4-WAY VALVE WITH NORMAL POSITION OF THREE OPEN PORTS AND N2 SUPPLY ISOLATED BY THE FOURTH PORT.
 - ALARMS ARE ANNUNCIATED AT THE POST ACCIDENT SAMPLING SYSTEM CONTROL PANEL.
 - VALVE FAILS TO "NORMAL" POSITION UPON LOSS OF POWER AND "AS IS" UPON LOSS OF AIR.
 - ALL EQUIPMENT ON THIS DRAWING IS LOCATED WITHIN THE PASS STATION.
 - N/S - INDICATES THAT NITROGEN IS SUPPLIED TO THIS VALVE FOR OPERATION FROM THE NITROGEN HEADER WITHIN THE SKID.
 - EQUIPMENT IS ABANDONED IN PLACE, AND NON FUNCTIONAL.

REFERENCE DRAWINGS

PIPE, VALVE & INSTRUMENT SYMBOLS	2998-G-078 SH 100
VALVE LIST	2998-A-051
LINE LIST	2998-B-052
VALVE OPERATIONAL NUMBER INDEX	2998-B-057A
INSTRUMENT INSTALLATION DETAILS	2998-B-231
INSTRUMENT LIST	2998-B-270C



NOTE:
THIS DRAWING IS MADE FROM REV. 3
OF DRAWING 2998-G-078 SH 152

- REVISION OF THIS DRAWING MAY REQUIRE UPDATE OF THE FOLLOWING DOCUMENTS:
- FSAR FIGURE 9.3-30
 - I/M PASS VOLUME II 2998-13315

FLORIDA POWER & LIGHT COMPANY ST LUCIE PLANT 1983 - 890 MWe EXTENSION - UNIT 2	
FLOW DIAGRAM SAMPLING SYSTEM	
RAYTHEON ENGINEERS & CONSTRUCTORS, INC	
SCALE: NONE	DATE:
DN: MESH	2998-G-078
DR: B. BLUM	SHEET
CH: CLANNINGHAM	152
	5

APERTURE CARD
INFORMATION ONLY
VERIFY WITH A CONTROLLED COPY BEFORE USE.

E