

2998-G-078
SH 153

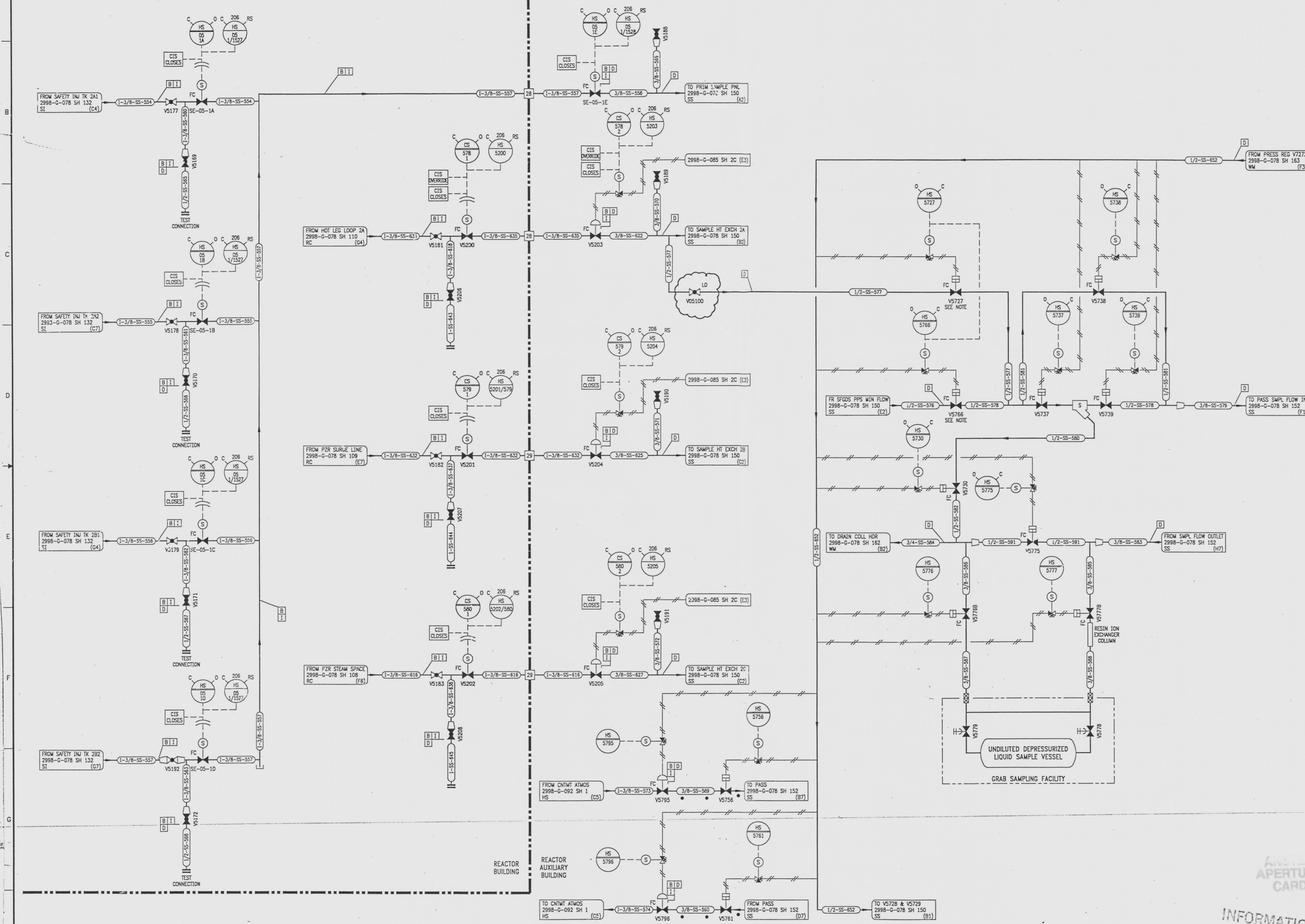
REACTOR BUILDING
REACTOR AUXILIARY BUILDING

REVISIONS					
NO	DATE	DESCRIPTION	BY	CH	APPROVED
4	7/24/95		GM	RR	JJZ
DCR-SLW-94-02: REDRAWN					
5	10-4-96		GW		
CON 46037-8036: ADD: (C4) VALVE MODE 'LO'					

DRAWING NUMBER
2998-G-078
SH 153
DATE: 10/8/95

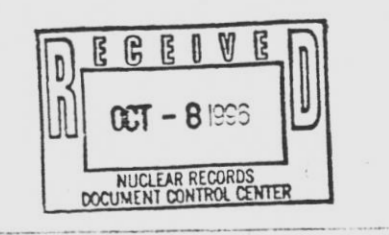
DRAWING NUMBER
DATE: 10/8/95

DRAWING NUMBER
DATE: 10/8/95



NOTES
ONE OF THE TWO AVAILABLE FLOW PATHS MUST BE OPENED PRIOR TO OPENING V5727 OR V5766.

REFERENCE DRAWINGS
PIPE, VALVE & INSTRUMENT SYMBOLS 2998-G-078 SH 100
VALVE LIST 2998-A-051
LINE LIST 2998-B-002
VALVE OPERATIONAL NUMBER INDEX 2998-B-057A
INSTRUMENT INSTALLATION DETAILS 2998-B-231
INSTRUMENT LIST 2998-B-270C



NOTE:
THIS DRAWING IS MADE FROM REV. 3
OF DRAWING 2998-G-078 SH 153

REVISION OF THIS DRAWING MAY REQUIRE UPDATE OF THE FOLLOWING DOCUMENT: FSAR FIGURE 9.3-3A

NUCLEAR SAFETY RELATED
IN PART ONLY
FLORIDA POWER & LIGHT COMPANY
ST. LUCIE PLANT
1883 - 890 MW EXTENSION - UNIT 2
FLOW DIAGRAM
SAMPLING
SYSTEM

RAYTHEON ENGINEERS & CONSTRUCTORS, INC.
SCALE: NONE
APPROVAL
DATE
LW: MECH
DR: J. PIPE
CH: CUNNINGHAM
2998-G-078
SHEET
153
5

APERTURE
CARD
INFORMATION
ONLY
VERIFY WITH A CONTROLLED
COPY BEFORE USE.

971 204 025 04