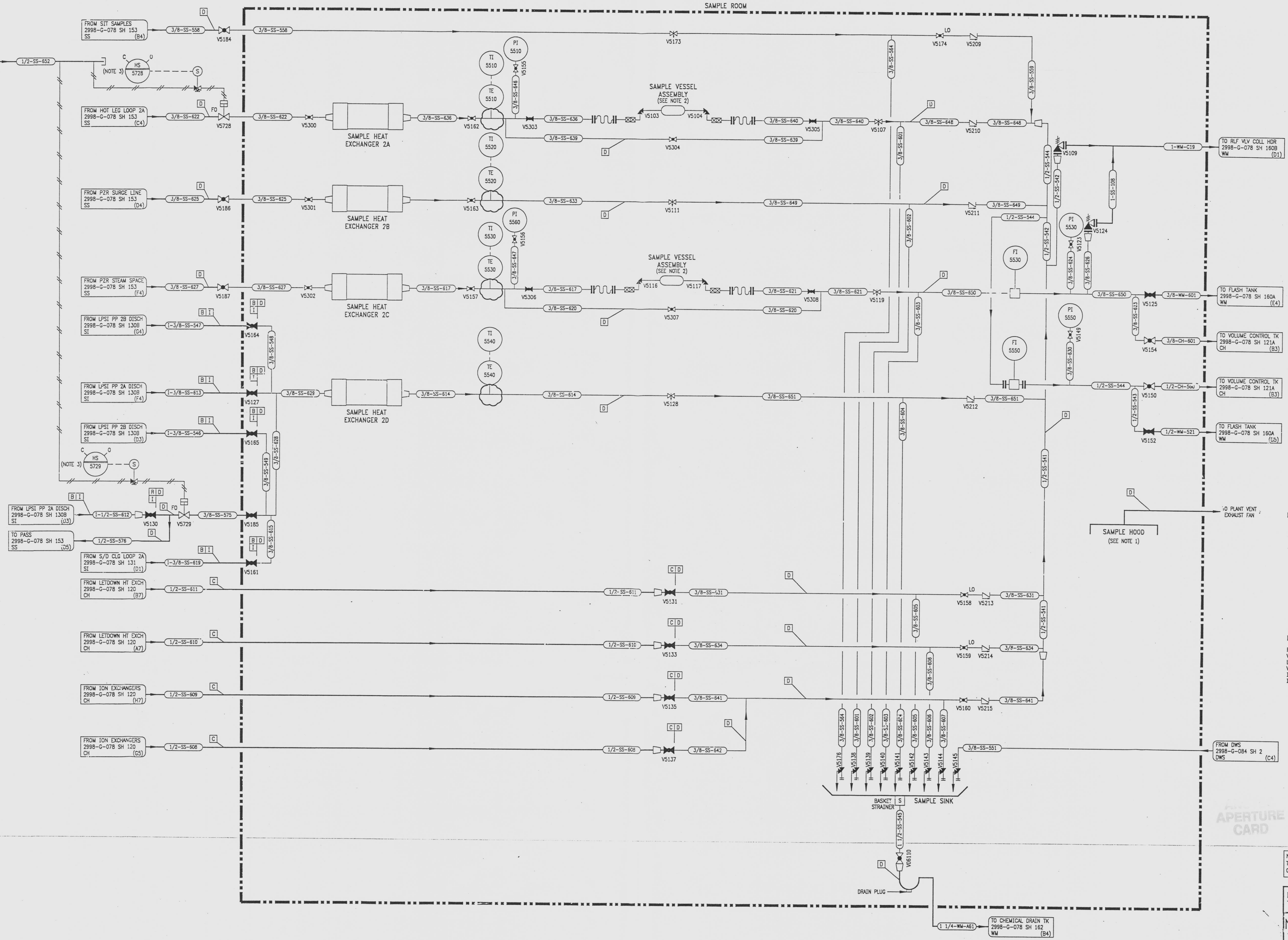


REVISIONS					
NO	DATE	DESCRIPTION	BY	CH	APPROVED
2	7/24/95	DCR-SLM-24-057: REDRAWN	JCG	DWC	JJZ
3	4-2-96	DCR-SLM-26-013: REVISE (B4, C4, D4) INSTRU. CONNECTION	JGW		

DRAWING NUMBER
2998-G-078
SH 150

DRAWING NUMBER
2998-G-078
SH 150

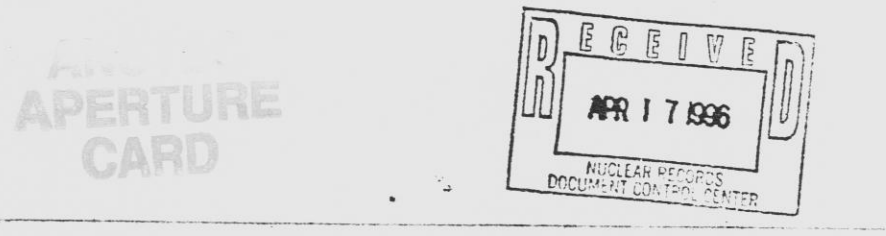
DRAWING NUMBER
2998-G-078
SH 150



- NOTES
1. SAMPLE VESSEL ASSEMBLIES & SAMPLE SINK PIPE INSIDE SAMPLE HOOD.
 2. SAMPLE VESSEL ASSEMBLY INCLUDES THE QUICK CONNECTS & ISOLATION VALVES (V5103, V5104, V5116 & V5117).
 3. SWITCHES ON POST ACCIDENT SAMPLE PANEL.

- REFERENCE DRAWINGS
- PIPE, VALVE & INSTRUMENT SYMBOLS 2998-G-078 SH 100
 - VALVE LIST 2998-A-051
 - LINE LIST 2998-B-052
 - VALVE OPERATIONAL NUMBER INDEX 2998-B-057A
 - INSTRUMENT INSTALLATION DETAILS 2998-B-231
 - INSTRUMENT LIST 2998-B-270C

FROM DWS
2998-G-084 SH 2
DWS (C4)



NOTE: THIS DRAWING IS MADE FROM REV. 1 OF DRAWING 2998-G-078 SH 150

REVISION OF THIS DRAWING MAY REQUIRE UPDATE OF THE FOLLOWING DOCUMENT: FSAR FIGURE 9.3-3

NUCLEAR SAFETY RELATED IN PART ONLY

FLORIDA POWER & LIGHT COMPANY
ST LUCIE PLANT
1983 - 890 MWe EXTENSION - UNIT 2
FLOW DIAGRAM SAMPLING SYSTEM

SCALE: NONE	APPROVAL	DATE
DR: MECH		2998-G-078
OR: J. PIPE		SHEET 150
CH: CLINNINGHAM		3

INFORMATION ONLY
VERIFY WITH A CONTROLLED COPY BEFORE USE.

9712040015-03