

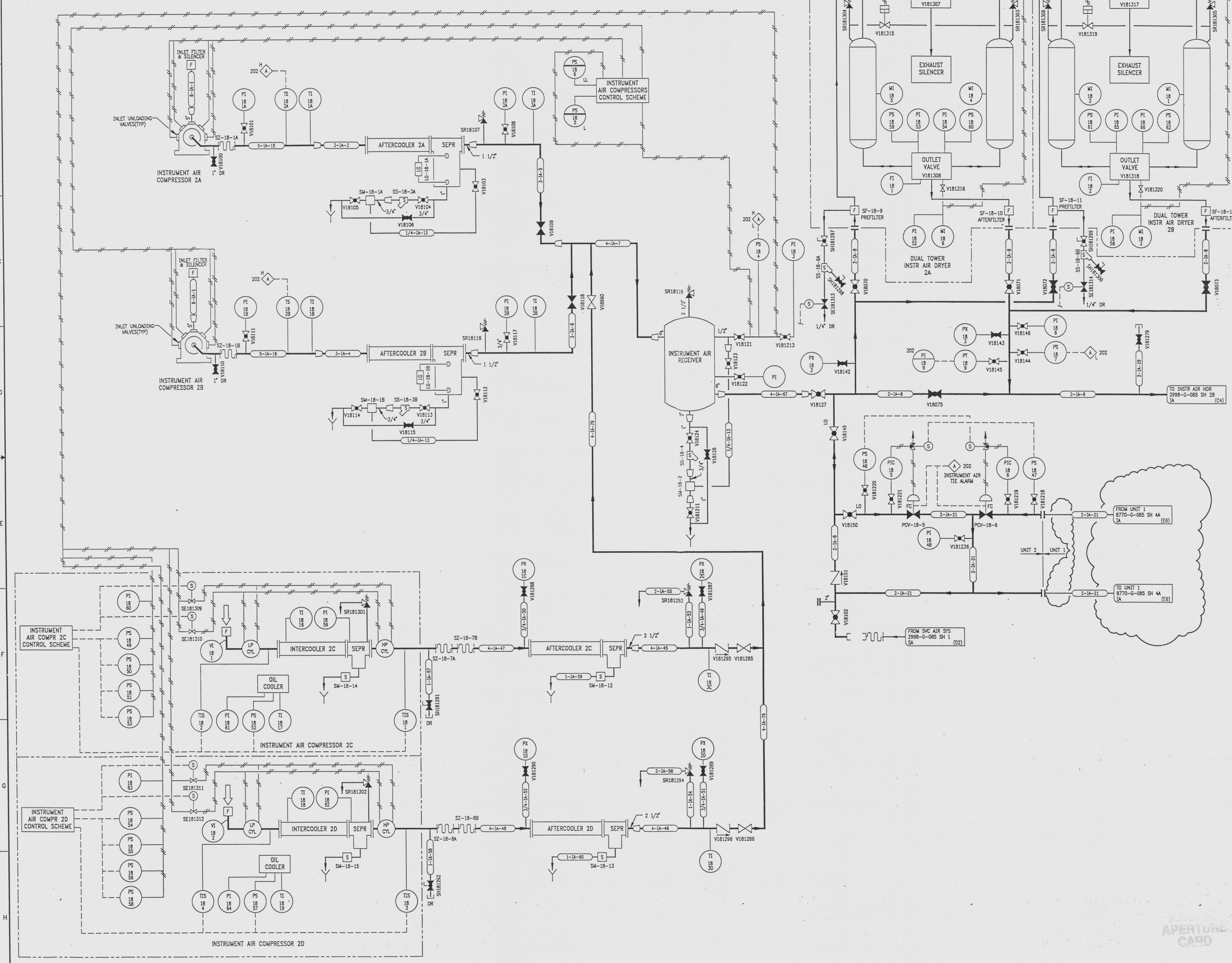
2998-G-085  
SH 3

DRAWING NUMBER  
2998-G-085  
SH 3

DRAWING NUMBER  
2998-G-085  
SH 3

DRAWING NUMBER  
2998-G-085  
SH 3

DRAWING NUMBER  
2998-G-085  
SH 3



REVISIONS				
NO	DATE	DESCRIPTION	BY	APPROVED
19	7/24/95		GM	RR
DCR-SLM-94-057: REDRAWN				
20	4/2/98		JCW	GM
DCR-SLM-96-013: ADD (DS, ES) LO TO V18148 & V18150				
21	8/25/97		GM	USA
DCR 950023: REV. (E7,F7) CONTINUATIONS DEL: (E7,F7) VALVES V18150 & V18170				

NOTES  
 ALL LINES NOT LABELED ARE - 1/2"-IA-12  
 ALL LINES LABELED (3/4") ARE - 3/4"-IA-11  
 ALL LINES LABELED (1") ARE - 1"-IA-10

REFERENCE DRAWINGS	
PIPE, VALVE & INSTRUMENT SYMBOLS	2998-G-078 SH 100
VALVE LIST	2998-A-051
LINE LIST	2998-B-052
VALVE OPERATIONAL NUMBER INDEX	2998-B-057A
INSTRUMENT INSTALLATION DETAILS	2998-B-231
INSTRUMENT LIST	2998-B-270C
IA DRYERS	2998-1842
IA COMPRESSORS 2C & 2D	2998-18480

INFORMATION ONLY  
 VERIFY WITH A CONTROLLED COPY BEFORE USE.

NOTE:  
 THIS DRAWING IS MADE FROM REV. 18  
 OF DRAWING 2998-G-085 SH 3

REVISION OF THIS DRAWING MAY REQUIRE UPDATE OF THE FOLLOWING DOCUMENT: FSAR FIGURE 9.3-2a

FLORIDA POWER & LIGHT COMPANY ST LUCIE PLANT 1983 - 890 Mw EXTENSION - UNIT 2 FLOW DIAGRAM INSTRUMENT AIR SYSTEM		
RAYTHEON ENGINEERS & CONSTRUCTORS, INC.		
SCALE: NONE	APPROVAL	DATE:
DW: MEGH		2998-G-085
DR: CUNNINGHAM		SHEET 3
CH: W. ELLIOTT		21

E 971204 0015-02