

2998-G-086
SH 3

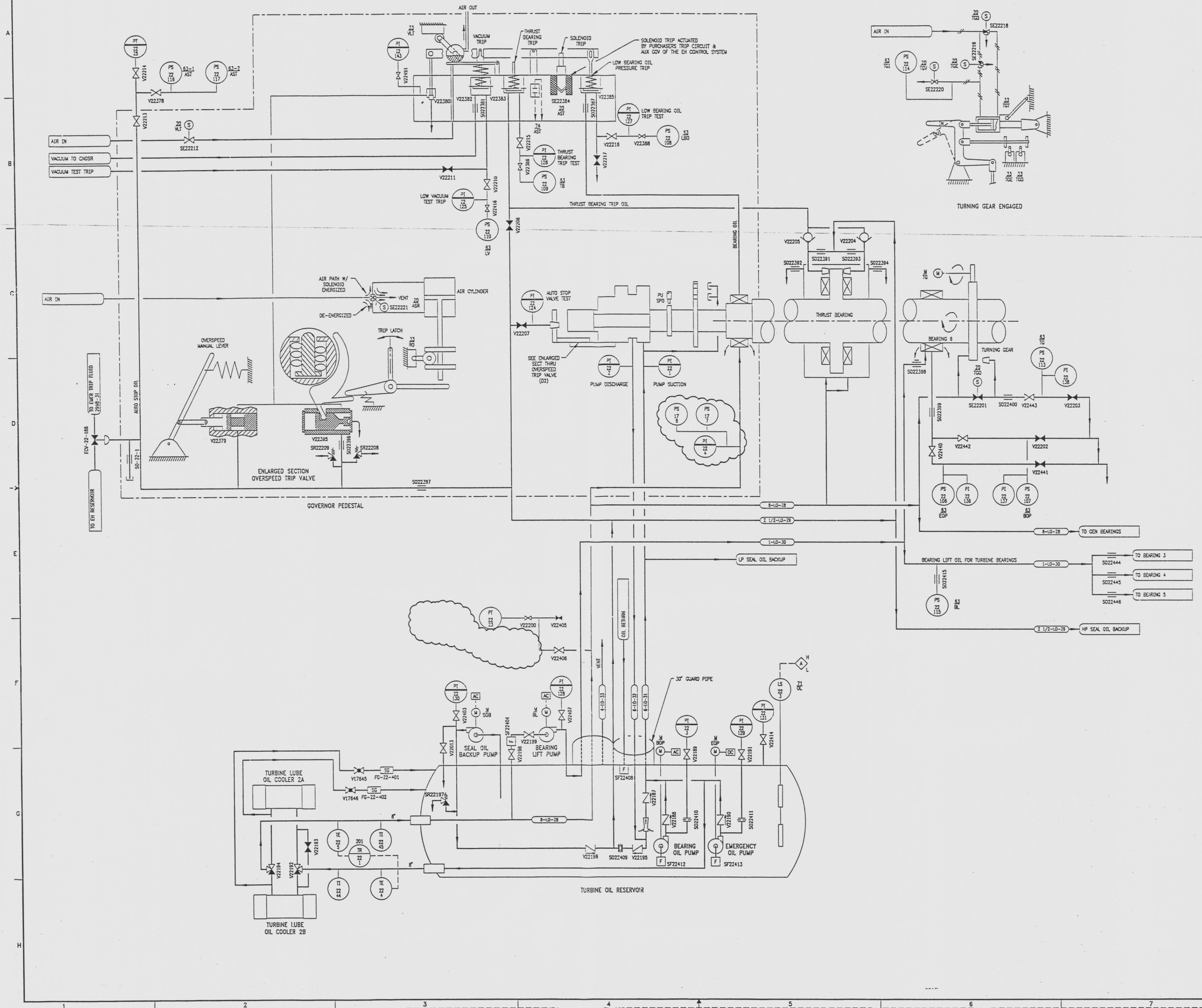
REVISIONS					
NO	DATE	DESCRIPTION	BY	CHK	APPROVED
7	7/24/95	SO22381-382-383 REDRAWN	DAC	MS	JJZ
8	4/2/96	DOE-SM-96-013, PGM 215-235; REVISE (C1, D1) ADD VALVES. ADD CAPPED LINE W/ ORIFICE SO-22-1	JGM	GM	JJZ
9	5/23/97	PGM 38146; DEL: (C4 & C5) ZERO SPEED INDICATOR	GM	HS	SHM
10	9/11/97	DOE-SM-97-018; REV: (D4,F3) INST. LOCATION	GM	HS	SHM

DRAWING NUMBER
2998-G-086
REVISED EDITION
RAYTHEON ENGINEERS & CONSTRUCTORS, INC.
BIRMINGHAM, ALABAMA

DRAWING NUMBER
2998-G-086
REVISED EDITION
RAYTHEON ENGINEERS & CONSTRUCTORS, INC.
BIRMINGHAM, ALABAMA

DRAWING NUMBER
2998-G-086
REVISED EDITION
RAYTHEON ENGINEERS & CONSTRUCTORS, INC.
BIRMINGHAM, ALABAMA

NUMBER
2998-G-086
REVISED EDITION
RAYTHEON ENGINEERS & CONSTRUCTORS, INC.
BIRMINGHAM, ALABAMA



REFERENCE DRAWINGS

PIPE, VALVE & INSTRUMENT SYMBOLS	2998-G-078 SH 100
VALVE LIST	2998-G-079
LINE LIST	2998-G-082
VALVE OPERATIONAL NUMBER INDEX	2998-G-087A
INSTRUMENT INSTALLATION DETAILS	2998-G-211
INSTRUMENT LIST	2998-G-270C

INFORMATION ONLY
VERIFY WITH A CONTROLLED COPY BEFORE USE.

NOTE: THIS DRAWING IS MADE FROM REV. 5 OF DRAWING 2998-G-086 SH 3

REVISION OF THIS DRAWING MAY REQUIRE UPDATE OF THE FOLLOWING DOCUMENT: FSAR FIGURE 10.2-11

FLORIDA POWER & LIGHT COMPANY
ST. LUCIE PLANT
1983 - 850 MW EXTENSION - UNIT 2
FLOW DIAGRAM
TURBINE LUBE OIL SYSTEM

SCALE: NONE	APPROVAL	DATE:
DR: MECH		2998-G-086
DR: J. CHOFFET		SHEET 3
DR: J. BRIDGEMAN		10

9712040015-16 E