

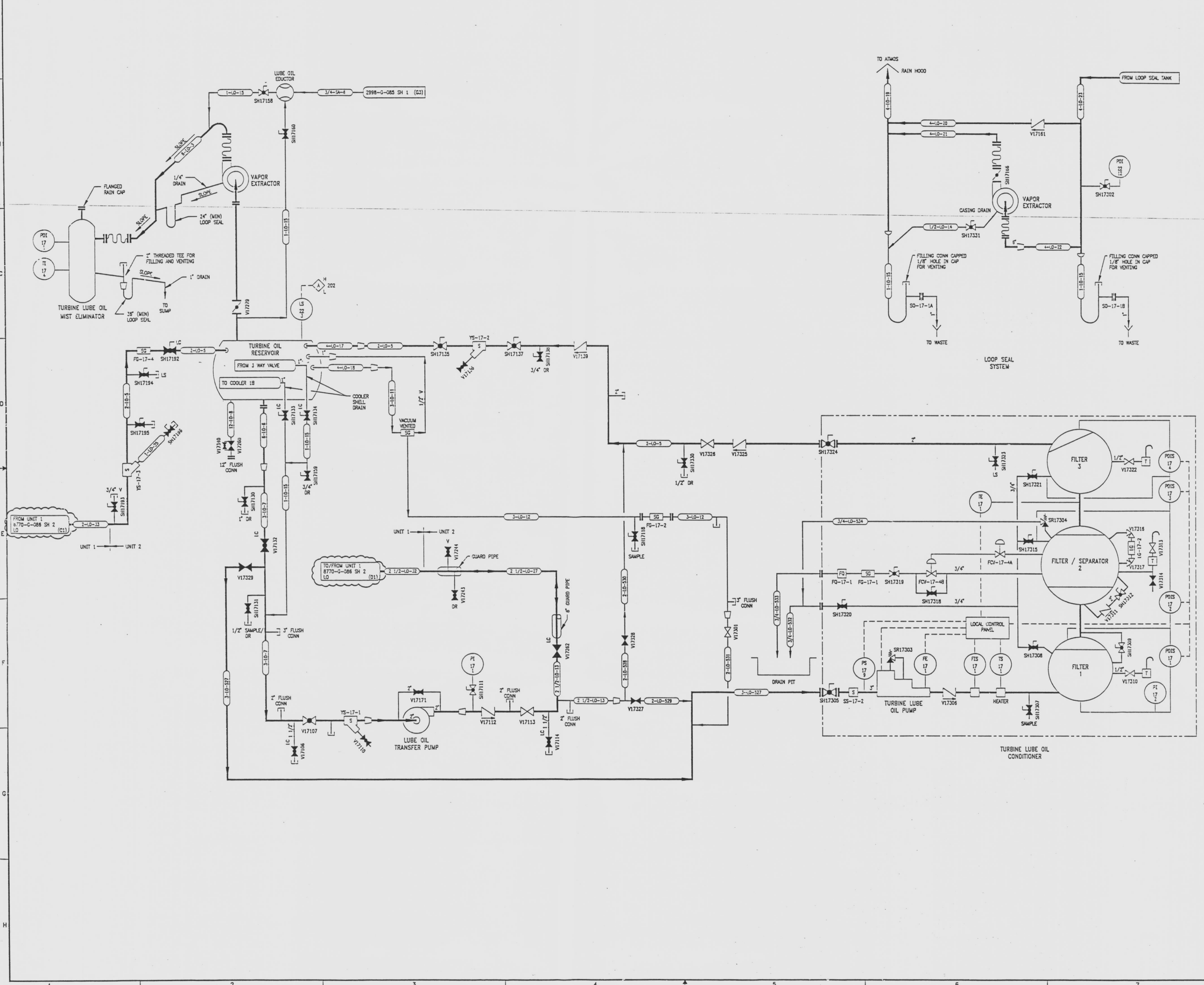
2998-G-086
SH 2

DRAWING NUMBER
2998-G-086
SH 2

DRAWING NUMBER
2998-G-086
SH 2

DRAWING NUMBER
2998-G-086
SH 2

NUMBER
2998-G-086
SH 2



REVISIONS					
NO	DATE	DESCRIPTION	BY	CHK	APPROVED
25	7-24-95		DAC	JCS	JUZ
DCR-SM-94-002: REDRAWN					
26	11/22/98		GM	HS	JUZ
DCM-311-295: ADD: (B-1 THRU C-1) PIPING & EQUIP. DEL: (A-1 THRU C-1) PIPING, EQUIP & INST.					
27	4/2/98		JCW	GM	JUZ
DCR-SM-94-012: ADD: (D2) EQUALIZER VALVE V17240					
28	10/4/98		HS	GM	JRW
DCM-35027-5038: ADD: (D2,F4) VALVE MODE LC					
29	8/26/97		GM	HS	JUZ
DCR-350022: REV: (E1,F3) CONTINUATIONS					

REFERENCE DRAWINGS	
PIPE VALVES & INSTRUMENT SYMBOLS	2998-G-078 SH 100
VALVE LIST	2998-G-081
LINE LIST	2998-G-082
VALVE OPERATIONAL NUMBER INDEX	2998-G-083A
INSTRUMENT INSTALLATION DETAILS	2998-G-231
INSTRUMENT LIST	2998-G-270C
TURBINE LUBE OIL SYSTEM	2998-G-086 SH 1, 2
DI FLUID SYSTEM & LUBE DIAGRAM	2998-11
GENERAL LOOP SEAL SYSTEM	2998-18
LOOP SEAL SYSTEM	2998-110

INFORMATION ONLY
VERIFY WITH A CONTROLLED COPY BEFORE USE.

NOTE:
THIS DRAWING IS MADE FROM REV. 24
OF DRAWING 2998-G-086 SH 2

REVISION OF THIS DRAWING MAY REQUIRE UPDATE OF THE FOLLOWING DOCUMENT: FSAR FIGURE 10.2-10		
FLORIDA POWER & LIGHT COMPANY ST. LUCIE PLANT 1983 - 890 MW EXTENSION - UNIT 2		
FLOW DIAGRAM TURBINE LUBE OIL SYSTEM		
RAYTHEON ENGINEERS & CONSTRUCTORS, INC.		
SCALE: NONE	APPROVAL	DATE:
DR: JCS		2998-G-086
CHK: J. BORGESON		SHEET 2
		29

9778040015-14 E