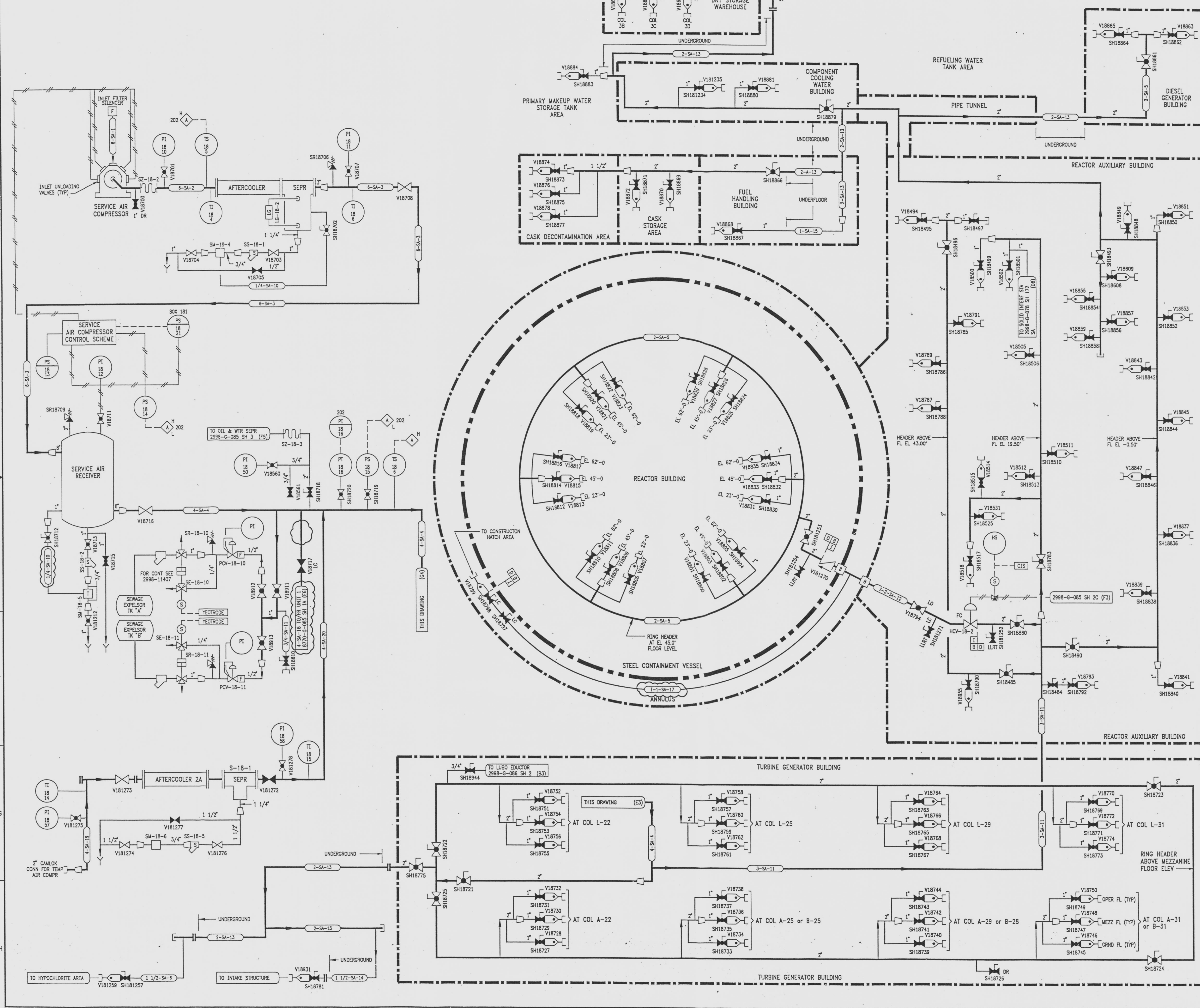


2998-G-085  
SH 1



REVISIONS					
NO	DATE	DESCRIPTION	BY	CH	APPROVED
18	7/24/95		DWC	MJP	JJZ
DCR-SLM-94-057: REDRAWN					
19	11/4/96		GM	HS	JRH
CRN 96037-5038: ADD (F8) VALVE MODE LC					
20	8/5/97		GM	HS	JRH
DCR 96028: REV (F7) CONTINUATION, (F4, E1, E2) DWG CORRECTIONS					

NOTES  
 ALL LINES LABELED (1/2") ARE - 1/2-SA-8  
 ALL LINES LABELED (3/4") ARE - 3/4-SA-8  
 ALL LINES LABELED (1") ARE - 1-SA-7  
 ALL LINES LABELED (1 1/2") ARE - 1 1/2-SA-8  
 ALL LINES LABELED (2") ARE - 2-SA-5

REFERENCE DRAWINGS  
 PIPE, VALVE & INSTRUMENT SYMBOLS 2998-G-078 SH 100  
 VALVE LIST 2998-A-051  
 LINE LIST 2998-B-052  
 VALVE OPERATIONAL NUMBER INDEX 2998-B-057A  
 INSTRUMENT INSTALLATION DETAILS 2998-B-231  
 INSTRUMENT LIST 2998-B-270C

INFORMATION ONLY  
 VERIFY WITH A CONTROLLED COPY BEFORE USE  
 APERTURE CARD

NOTE:  
 THIS DRAWING IS MADE FROM REV. 17  
 OF DRAWING 2998-G-085 SH 1

REVISION OF THIS DRAWING MAY REQUIRE UPDATE OF THE FOLLOWING DOCUMENT: FSAR FIGURE 9.3-1

NUCLEAR SAFETY RELATED IN PART ONLY

FLORIDA POWER & LIGHT COMPANY  
 ST LUCIE PLANT  
 1983 - 890 MWe EXTENSION - UNIT 2  
 FLOW DIAGRAM SERVICE AIR SYSTEM

RAYTHEON ENGINEERS & CONSTRUCTORS, INC  
 SCALE: NONE  
 DWG: MCDL  
 DRG: CLANNINGHAM  
 CH: W. P. PARRY  
 APPROVAL: \_\_\_\_\_  
 DATE: 2998-G-085  
 SHEET: 1  
 TOTAL SHEETS: 20

DRAWING NUMBER  
 2998-G-085  
 SH 1

DRAWING NUMBER  
 2998-G-085  
 SH 1

DRAWING NUMBER  
 2998-G-085  
 SH 1

NUMBER

9712040015-08 E