

DRAWING NUMBER

2998-19710

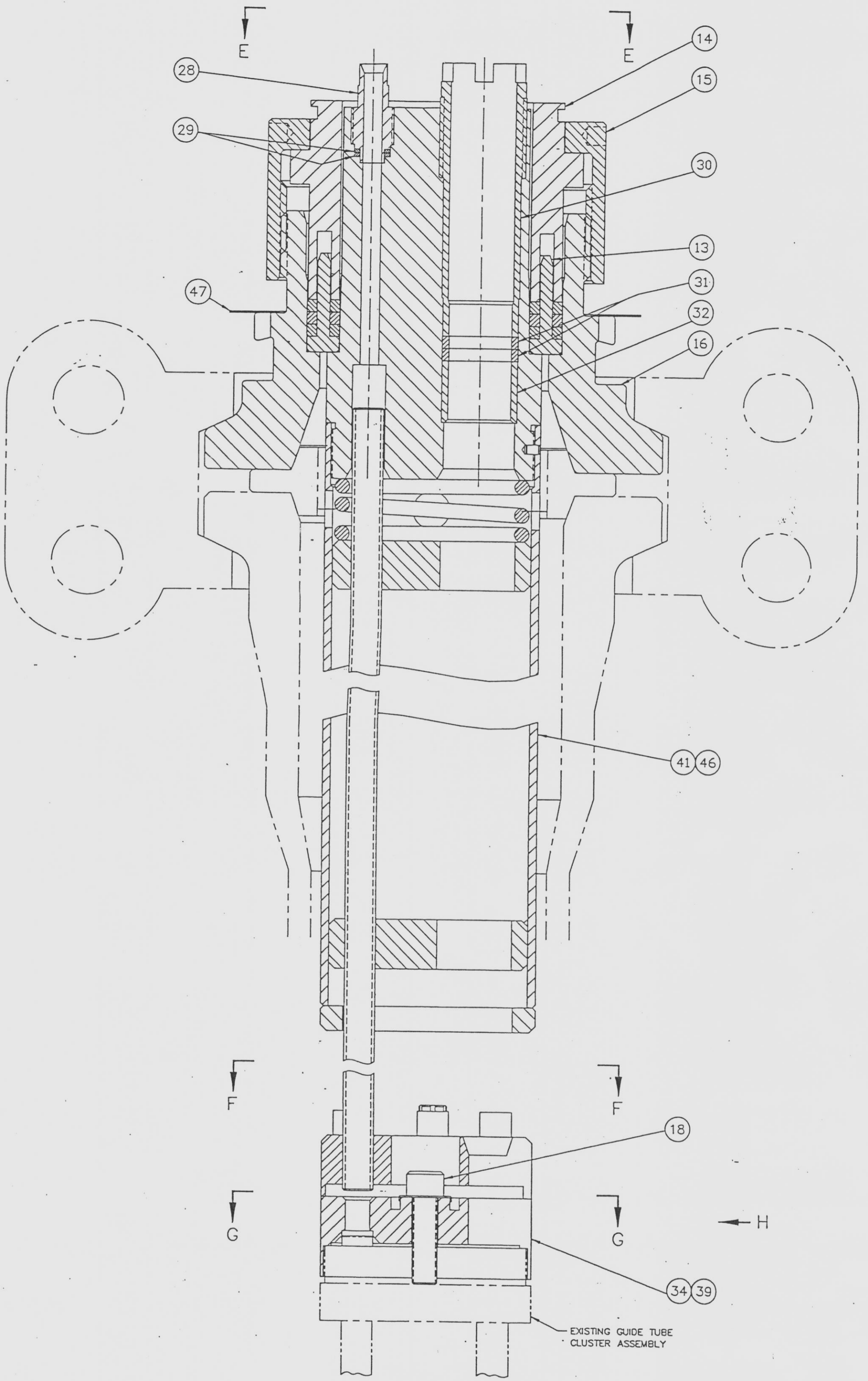
DRAWING NUMBER

NUMBER

FLORIDA POWER & LIGHT COMPANY
PLANT HOLD CORPORATION
REVISION NUMBER 02/28/87
REVISED BY JAMES D. SMITH

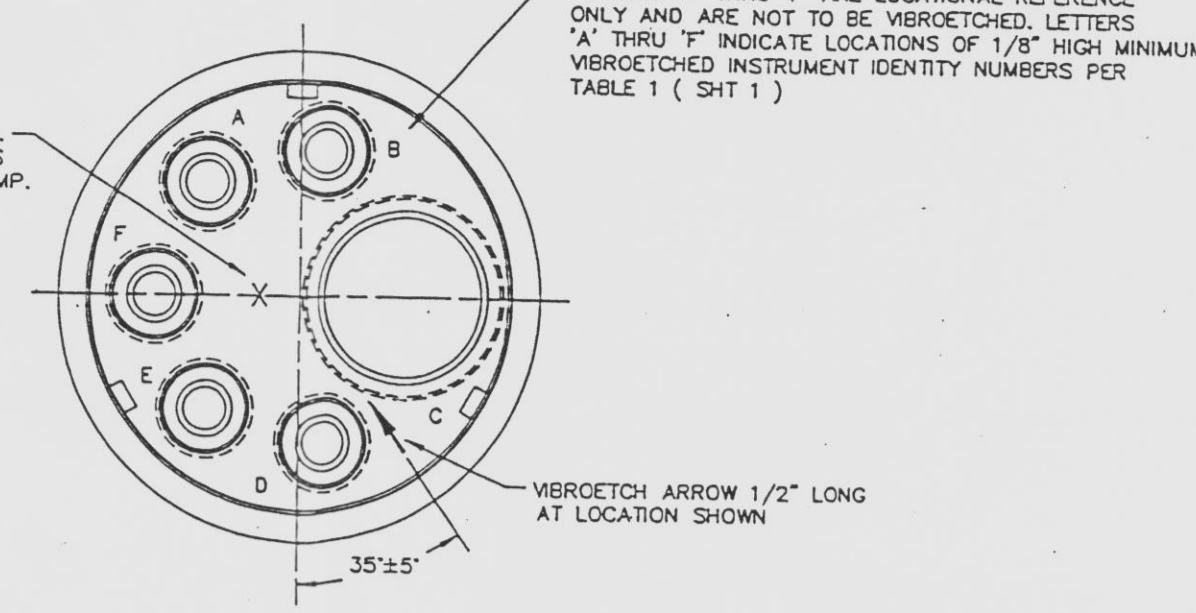
FLORIDA POWER & LIGHT COMPANY
PLANT HOLD CORPORATION
REVISION NUMBER 02/28/87
REVISED BY JAMES D. SMITH

FLORIDA POWER & LIGHT COMPANY
PLANT HOLD CORPORATION
REVISION NUMBER 02/28/87
REVISED BY JAMES D. SMITH

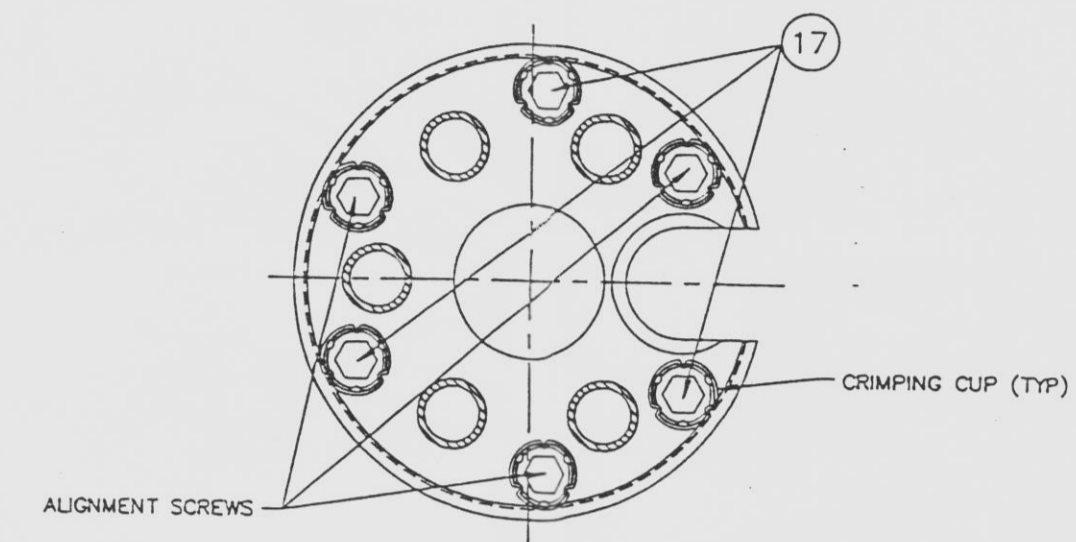


4 9 HJTC QUICKLOC ASSEMBLY
SCALE: 1/1
NOTE 3

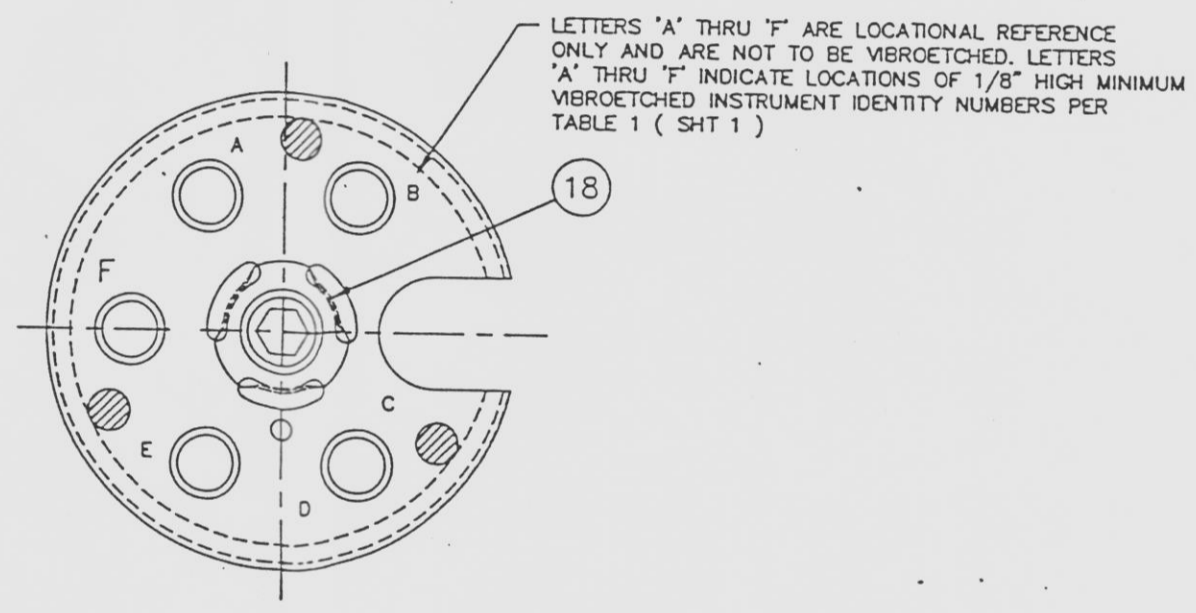
STAMP PIECE NO. IN DEFINED AREA
MARKING SHALL BE 3/16" NUMERALS
1/64" DEPTH. USE LOW STRESS STAMP.



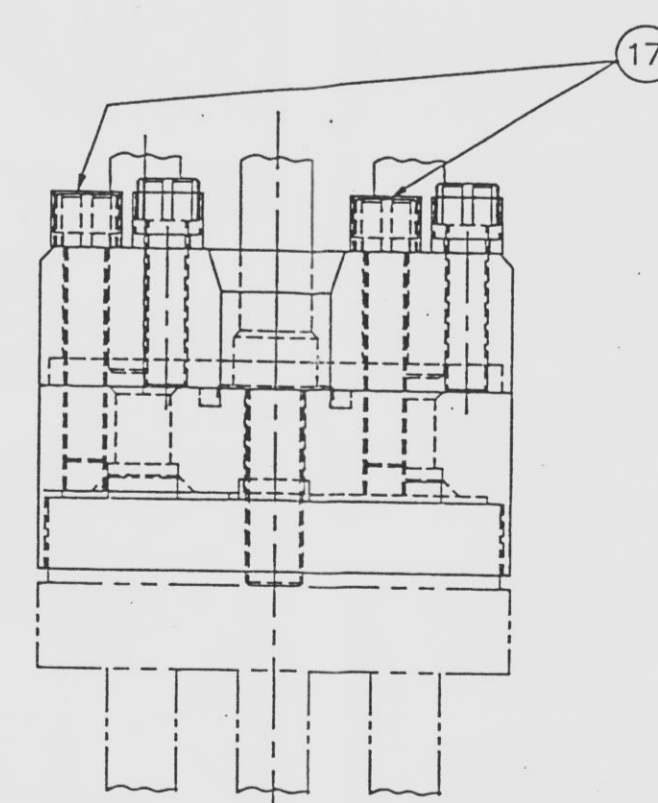
VIEW E-E
SCALE: 1/1
ITEMS 41 & 46 SHOWN ONLY FOR CLARITY



SECTION F-F
SCALE: 1/1



SECTION G-G
SCALE: 1/1



VIEW H
SCALE: 1/1

INFORMATION
ONLY
VERIFY WITH A CONTROLLED
COPY BEFORE USE.

E-13172-165-320
SHEET 2 OF 2

CERTIFIED FOR
CONSTRUCTION

REV.	DESCRIPTION	DATE	BY	CHKD.	APP'D.	SCALE	NOTED	REV.
1	INITIALLY RELEASED AS "CERTIFIED FOR CONSTRUCTION" AND ADDED VERIFICATION STATUS. COMPLETE LABEL PER REV. REG 95-161	2/2/87	JDS	JDS	JDS	1/1		1

UNLESS OTHERWISE SPECIFIED		DIMENSIONING & TOLERANCING PER ANSI Y14.5M-1982	
DIMENSIONS APPLY AT 68°F (20°C)		ALL DIMENSIONS ARE IN INCHES	
TOLERANCES:		ONE PLACE DECIMAL ± .1	
TWO PLACE DECIMAL ± .02		THREE PLACE DECIMAL ± .005	
BREAK CORNERS .015 APPROX. R		OR CHAM - FILETS .015 TO .030 R	
MACHINED FINISH .0125 MICRO IN.		ANGLES ± 0° 30'	
CHAM ± 5°		DO NOT SCALE DRAWING	

COMBUSTION ENGINEERING		DRAWN BY D. BROWN	
NUCLEAR POWER		CHECKED BY J. G. SMITH	
CUSTOMER: FLORIDA POWER & LIGHT CO. ST. LUCIE PLANT-UNIT 2		APPROVED BY J. M. BURGER	
PROJECT NO. 2004909		DATE 2/2/87	
TASK NO.		SCALE 1/1	
SHEET 2 OF 2		REV. 0	

VERIFICATION STATUS: COMPLETE	
THE TECH INFORMATION CONTAINED IN THIS DOCUMENT HAS BEEN REVIEWED TO BE CORRECT BY SCALE OF DESIGN REVIEW	
DESIGNER	DATE
DRAWN	DATE
CHECKED	DATE
APPROVED	DATE

2998-19710		REV. 0
FLORIDA POWER & LIGHT COMPANY		
ST. LUCIE PLANT UNIT 2		
P.O. CE 917		
REMOVED WITHOUT COMMENTS		X
REMOVED WITH COMMENTS AS NOTED		
NOT APPLICABLE		
NO COMMENTS, NO PRINT REQUIRED		
FOR REVISIONS ONLY		
NO FURTHER REVISIONS REQUIRED		X
REVISIONS REQUIRED REPROducible		
REVISIONS REQUIRED AS SHIPPED		
DO NOT PROCEED WITH FABRICATION UNLESS REVISIONS REQUIRED REPROducible		
ICI & HJTC QUICKLOC ASSEMBLY SHEET 2		
REVIEWED BY	DATE	
	2/2/87	

ISO 9001	INITIAL ISSUE FOR PCM 98153
REV. DATE	DESCRIPTION
0	

FEB 2 1987

01

9712040015-14 D