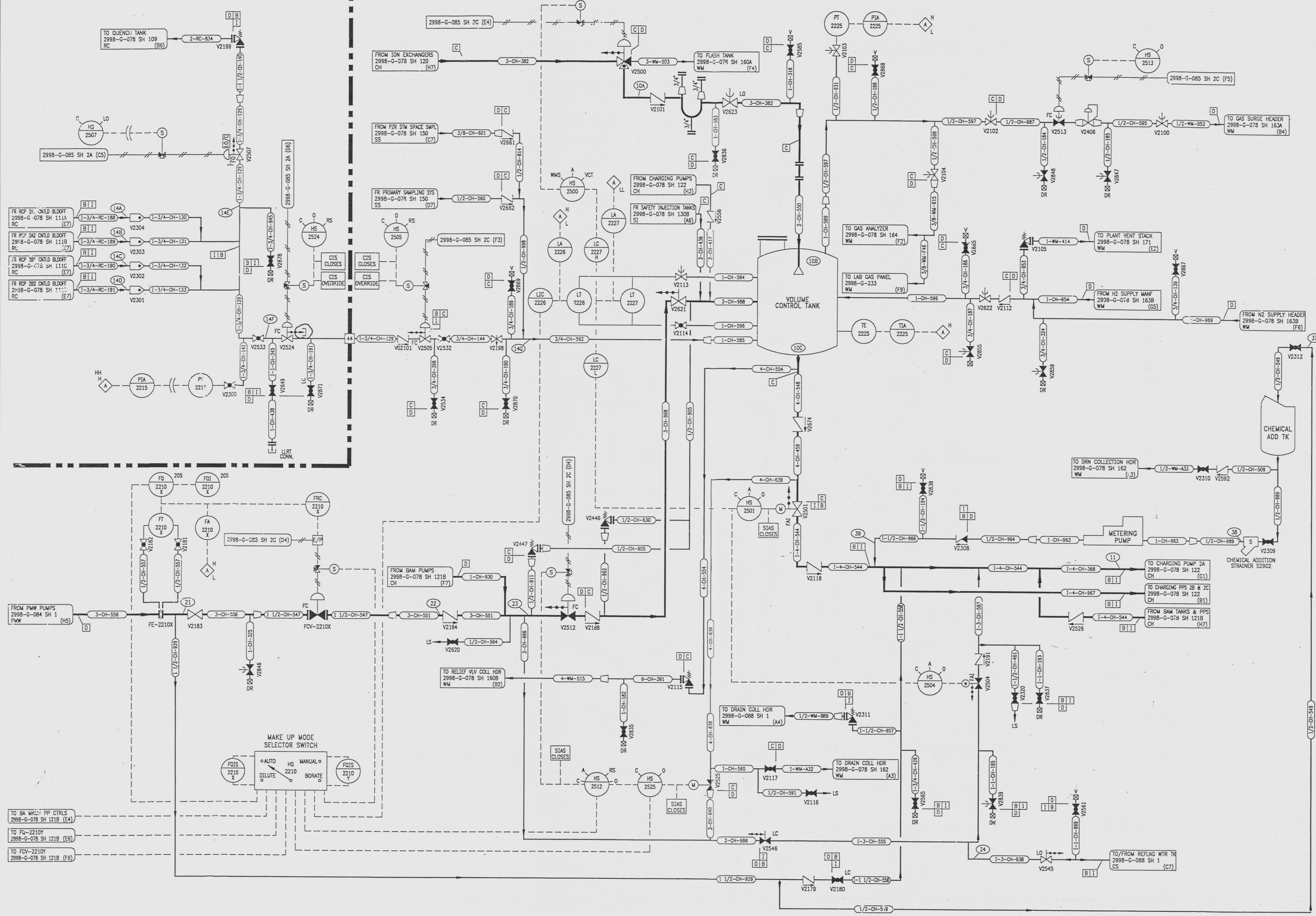


REVISIONS					
NO	DATE	DESCRIPTION	BY	CH	APPROV./FD
17	7/24/95	DCR-SLM-94-057: REDRAWN	JCG	CM	JJZ
18	1/8/96	DC/M 075-295: REV: (D-2) LLRT, (F-4) PIPING.	GM	HS	JJZ
19	10/4/96	SRN 96037-6036: ADD: (D-2) VALVE MODE 'LC'	GW	HS	JRH
20	01/08/97	DCR 960223: ADD: (C2) CAPPED LEAKOFF LINE	GM	WJ	JJZ



NOTE
BATCHING SWITCH F015-2210X CLOSES FCV-2210X AT END OF DILUTE BATCH.

REFERENCE DRAWINGS
 PIPING, VALVES & INSTRUMENT SYMBOLS 2998-G-078 SH 100
 VALVE LIST 2998-A-051
 LINE LIST 2998-B-052
 VALVE OPERATIONAL NUMBER INDEX 2998-B-057A
 INSTRUMENT INSTALLATION DETAILS 2998-B-211
 INSTRUMENT LIST 2998-B-270C



NOTE:
THIS DRAWING IS MADE FROM REV. 16
OF DRAWING 2998-G-078 SH 121A

REVISION OF THIS DRAWING MAY REQUIRE UPDATE OF THE FOLLOWING DOCUMENT: FSAR FIGURE 0.3-56

**NUCLEAR SAFETY RELATED
IN PART ONLY**

FLORIDA POWER & LIGHT COMPANY
ST. LUCIE PLANT
1983 - 890 MWe EXTENSION - UNIT 2
FLOW DIAGRAM
CHEMICAL & VOLUME CONTROL
SYSTEM

RAYTHEON ENGINEERS & CONSTRUCTORS, INC.		
SCALE: NONE	APPROVAL	DATE:
DIV: MECH		2998-G-078
DR: J. GIPE		SHEET
CH: D. CUNNINGHAM		121A
		20

INFORMATION ONLY
VERIFY WITH A CONTROLLED COPY BEFORE USE.

DRAWING NUMBER
2998-G-078
SH 121A

DRAWING NUMBER
2998-G-078
SH 121A

DRAWING NUMBER
2998-G-078
SH 121A

DRAWING NUMBER
2998-G-078
SH 121A