

2998-G-078  
SH 1608

REVISIONS				
NO	DATE	DESCRIPTION	BY	APPROVED
3	7/24/95		BB	JIZ
4	8/27/97	DCR-SJM-94-027: REDRAWN	GM	JIZ

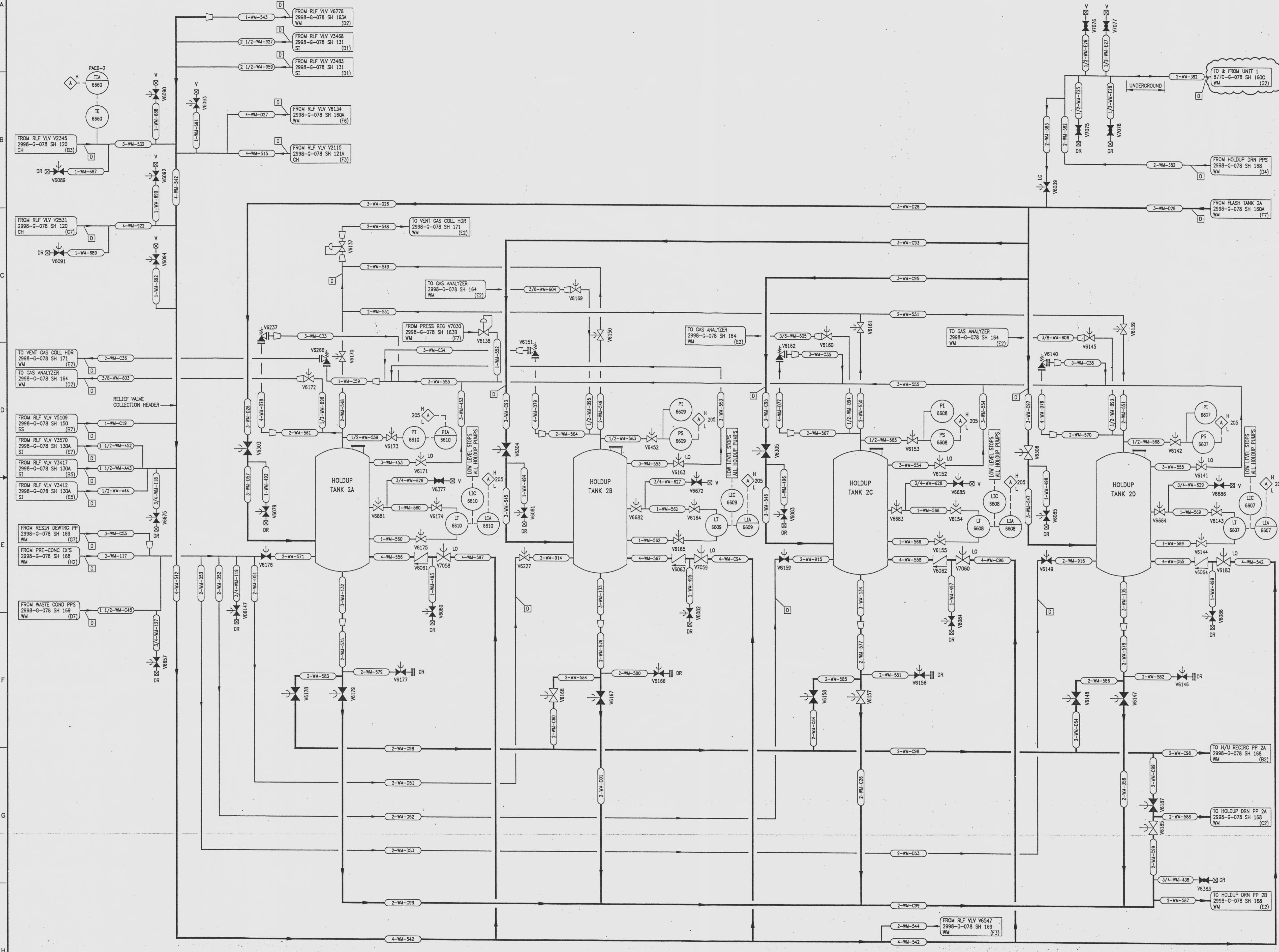
DCR 860023: REV. (87) CONTINUATION

DRAWING NUMBER  
2998-G-078  
SH 1608

DRAWING NUMBER  
2998-G-078  
SH 1608

DRAWING NUMBER  
2998-G-078  
SH 1608

NUMBER



REFERENCE DRAWINGS  
PIPE, VALVE & INSTRUMENT SYMBOLS 2998-G-078 SH 100  
VALVE LIST 2998-A-051  
LINE LIST 2998-B-052  
VALVE OPERATIONAL NUMBER INDEX 2998-B-057A  
INSTRUMENT INSTALLATION DETAILS 2998-B-231  
INSTRUMENT LIST 2998-B-270C

NOTE:  
THIS DRAWING IS MADE FROM REV. 2  
OF DRAWING 2998-G-078 SH 160

REVISION OF THIS DRAWING MAY REQUIRE UPDATE OF THE FOLLOWING DOCUMENTS: FSAR FIGURE 11.2-1

FLORIDA POWER & LIGHT COMPANY  
ST LUCIE PLANT  
1983 - 890 MWe EXTENSION - UNIT 2  
FLOW DIAGRAM  
WASTE MANAGEMENT  
SYSTEM

SCALE: NONE	APPROVAL	DATE:
DR: B. BLUM		2998-G-078
CH: SUNNINGHAM		SHEET 1608
		4

INFORMATION  
ONLY  
VERIFY WITH A CONTROLLED  
COPY BEFORE USE.

9772040015-110