

D₁
West

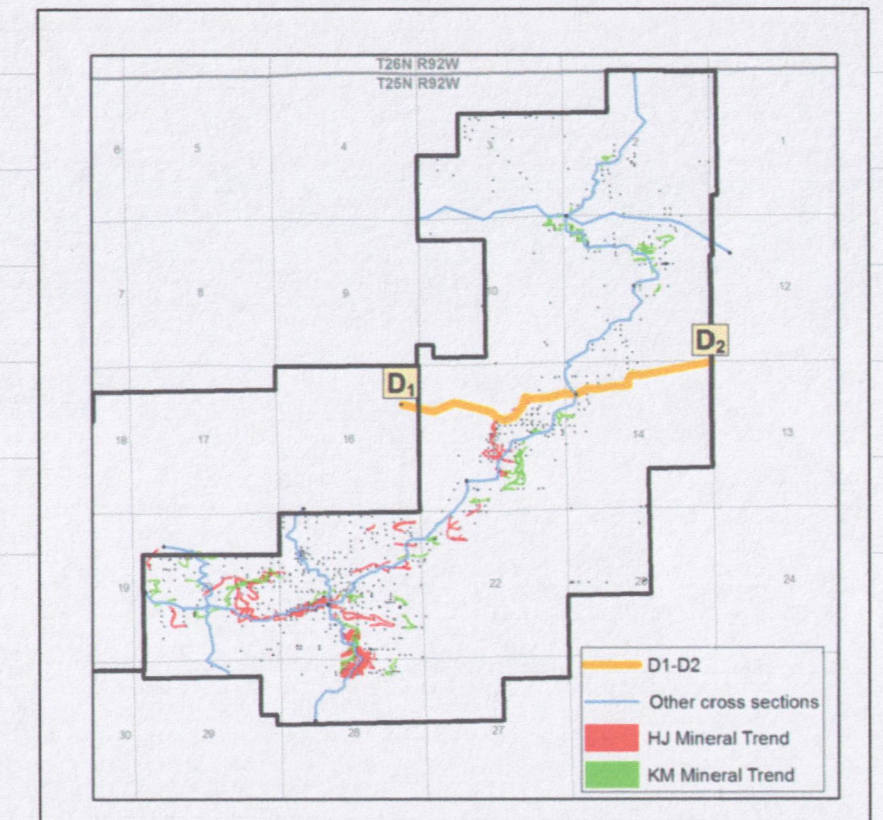
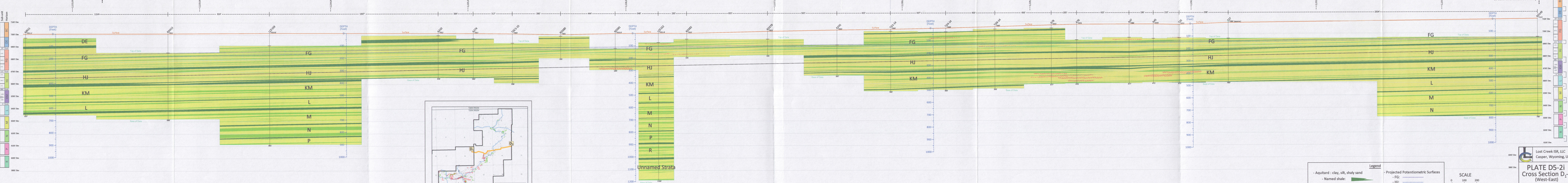
CROSS SECTION D₁-D₂

D₂
East

Lost Creek Permit LC East Amendment

Tie to Cross Sections A₃-A₁ and A₄-A₂

LC East Amendment boundary



Legend

- Aquitard : clay, silt, shaly sand
- Named shale:
- Unnamed shale:
- Sand:
- Mineralization: (generalized)
- Projected Potentiometric Surfaces:
 - FG:
 - HJ:
 - KM:
 - N:

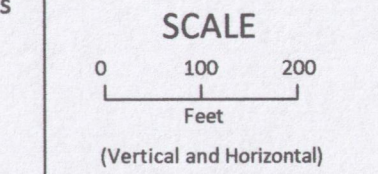


PLATE D5-2i
Cross Section D₁-D₂
(West-East)

Lost Creek Permit
LC East Amendment

Issued For: WDEQ-LQD 1.0
Geology by C. VanHolland
Issued/Revised: original

D18