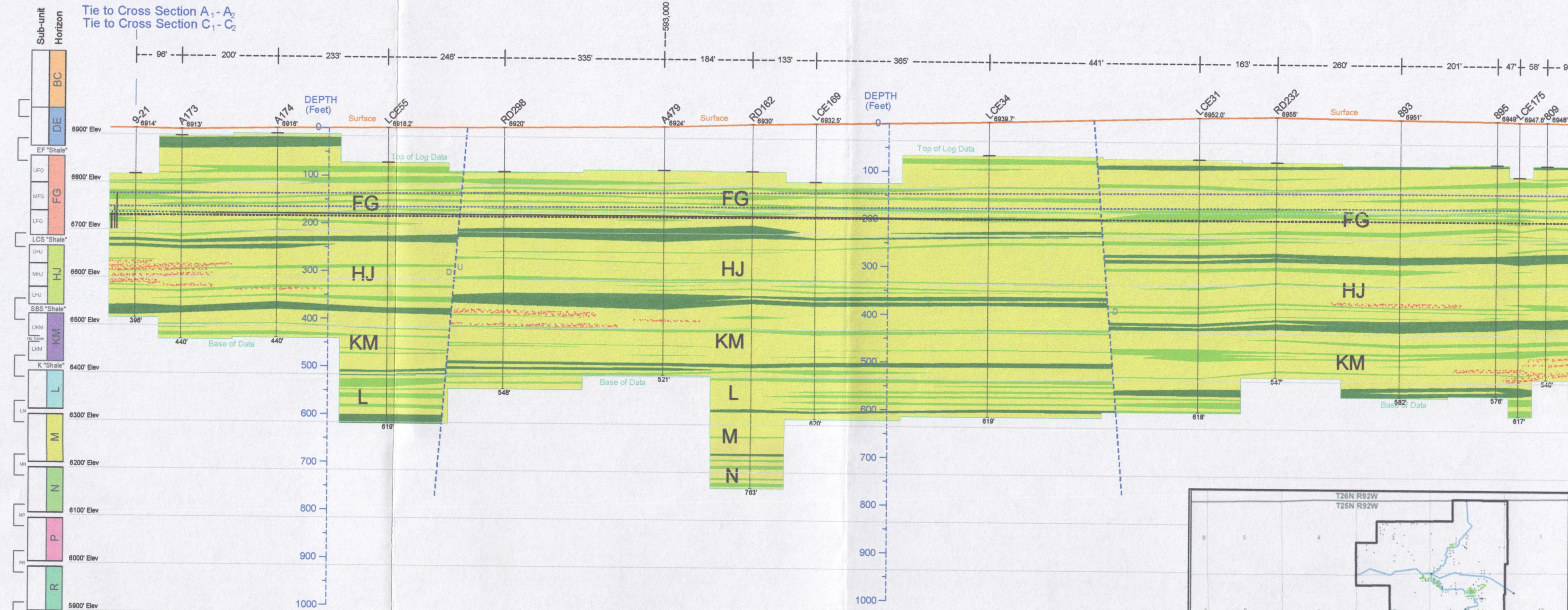
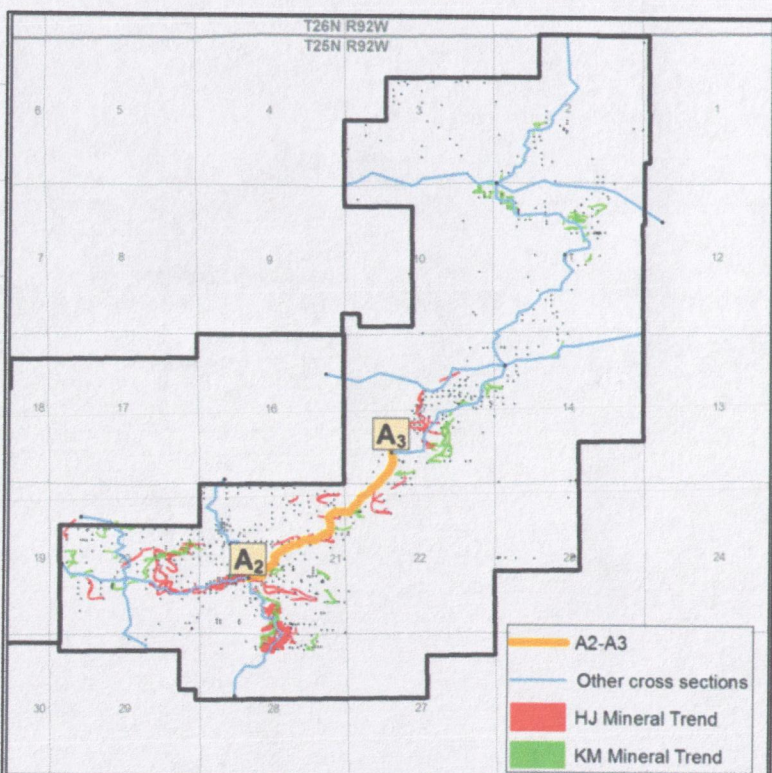
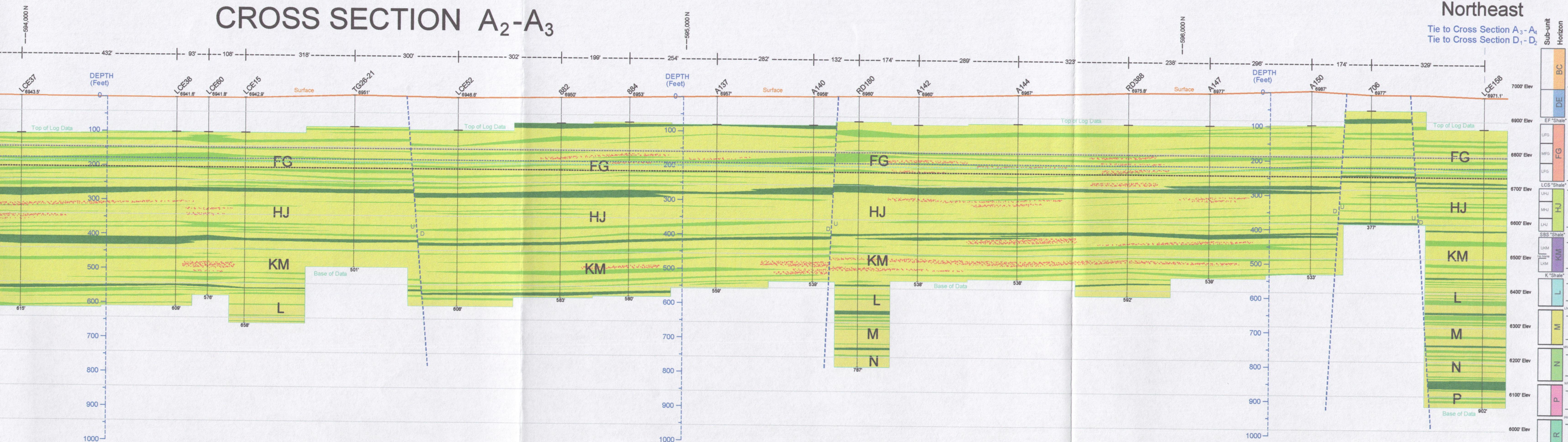


A₂ Southwest

Tie to Cross Section A₁-A₂
Tie to Cross Section C₁-C₂

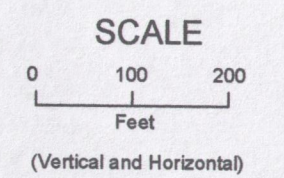


CROSS SECTION A₂-A₃



Legend

- Aquitard : clay, silt, shaly sand
- Named shale:
- Unnamed shale:
- Sand:
- Mineralization: (generalized)
- Projected Potentiometric Surfaces:
 - FG:
 - HJ:
 - KM:
 - N:



Lost Creek ISR, LLC
Casper, Wyoming, USA

PLATE D5-2b Cross Section A₂-A₃ (Southwest-Northeast)

Lost Creek Permit
LC East Amendment
Issued For: WDEQ-LQD 1.0
Geology by C. VanHolland
Issued/Revised: original