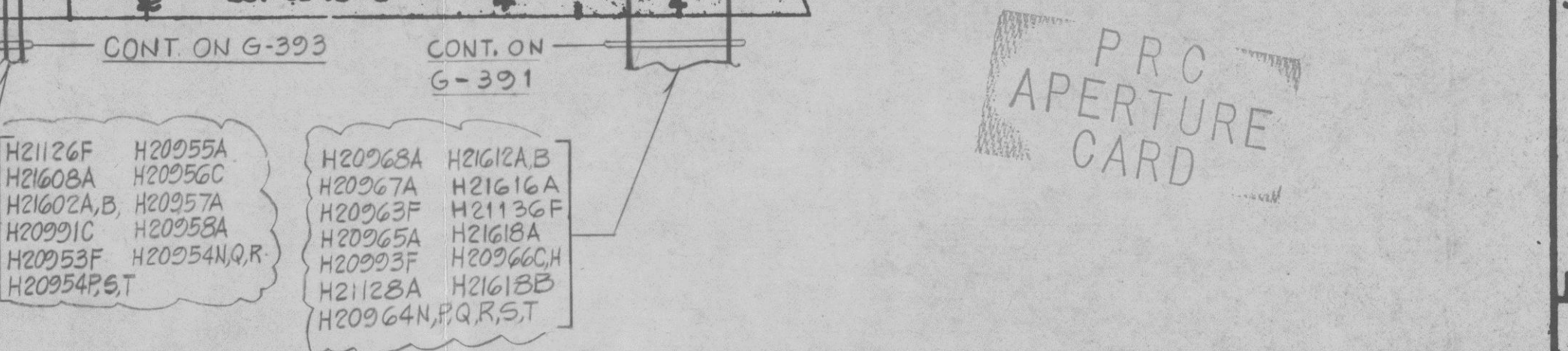
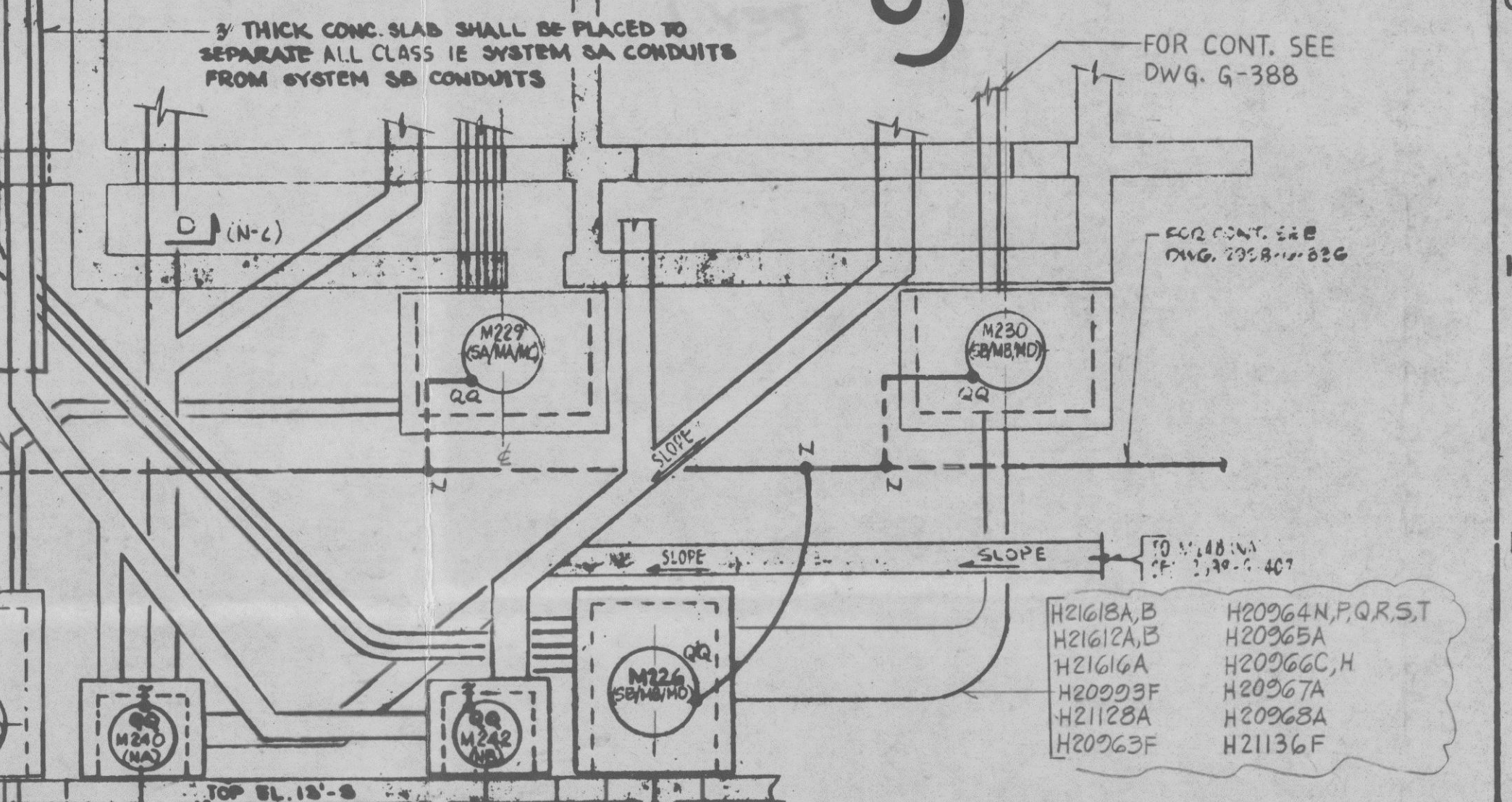


- NOTE'S**
1. FOR GROUNDING OF BOXES, HANDRAILS, CONDUIT AND MOTOR OPERATED VALVES A 4/0 GROUND CABLE SHALL BE RUN IN THE CONCRETE WALLS WHERE SHOWN. AT 2' ANG DISTANCE, 8" LONG, SHALL BE BROUGHT OUT AT 10' INTERVALS ALONG THIS GRID.
 2. ALL EMBEDDED CONDUITS PENETRATING THE FLOOR SHALL BE ADJACENT TO THE WALLS OR COLUMNS. UNLESS OTHERWISE NOTED BE INSTALLED 3/4" OFF THE FACE OF THE CONDUIT (BACK SIDE) IF THE CONDUIT ENTERS A BOX OR 1/8" OFF THE TANGENT IF THE CONDUIT DOES NOT ENTER A BOX.
 3. FOR SYMBOLS AND ADDITIONAL NOTES SEE DWG. 2998-G-355.
 4. FOR REFERENCE DWGS. SEE DWG. 2998-G-407.
 5. FOR TYPICAL INSTALLATION OF CLASS I DUCT BANKS SEE MAN HOLE DETAIL - B-34.
 6. ALL BOXES IN THE COMPONENT COOLING AREA ARE TO BE MTD ABOVE PLATFORM EL. 23'-0" UNLESS OTHERWISE NOTED.
 7. FOR COMPONENT COOLING AREA LIGHTING SEE DWG. 2998-G-408 SH.1B.



POOR ORIGINAL

REGULATORY DOCKET FILE

NUCLEAR SAFETY RELATED

ATTACHMENT 6 REV.1

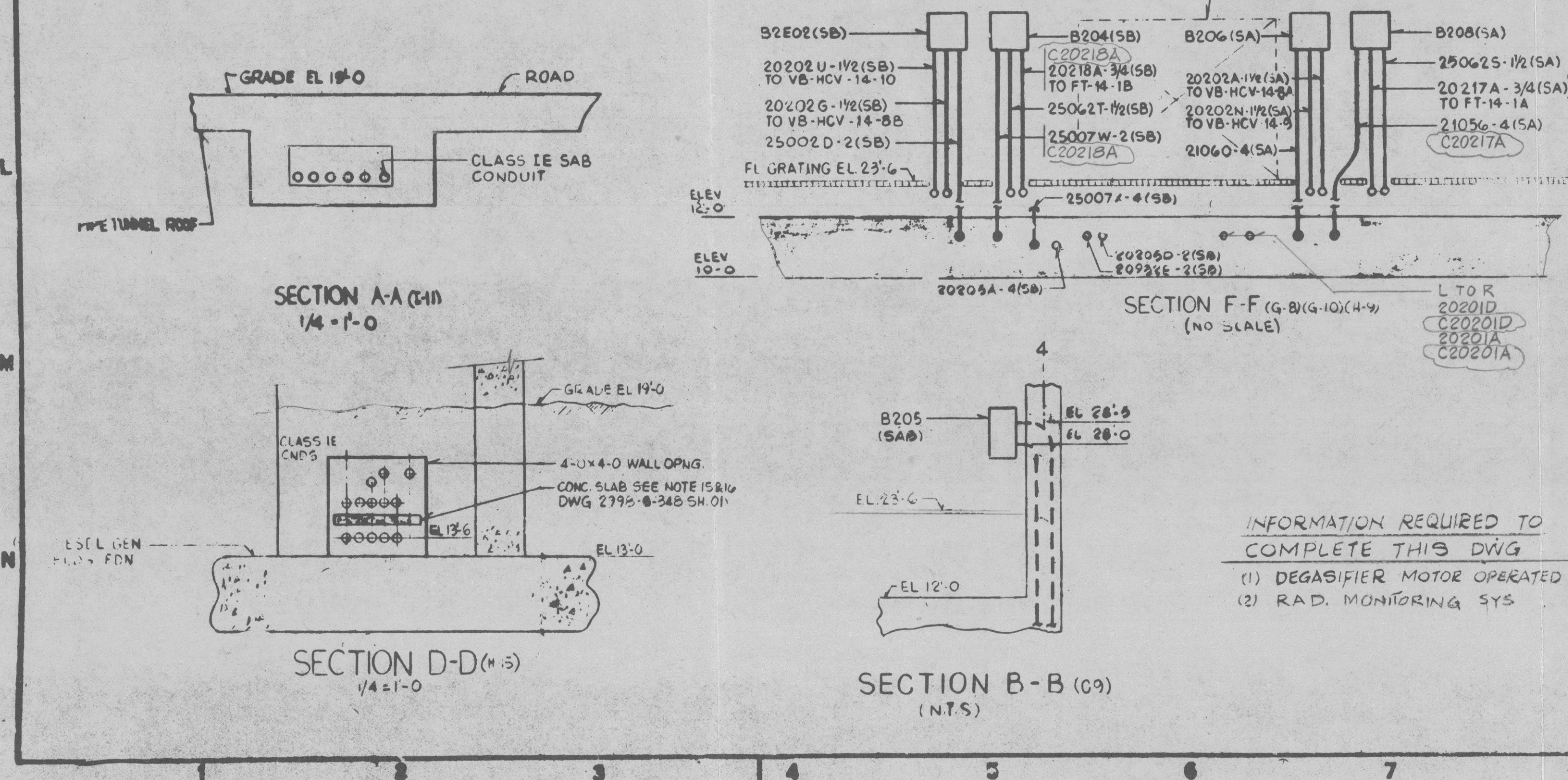
THIS DOCUMENT IS THE PROPERTY OF EBASCO SERVICE. INCORPORATED. ITS USE IS EXPRESSLY RESTRICTED BY THE TERMS OF THE CONTRACT, DATED AS OF SEP. 1974, BETWEEN EBASCO SERVICES INCORPORATED AND FLORIDA POWER & LIGHT COMPANY.

FLORIDA POWER & LIGHT COMPANY
 ST. LUCIE PLANT
 1983-890 MW (e) EXTENSION-UNIT NO. 2
 YARD DUCT RUNS AND LIGHTING
 PLAN, SECTIONS AND DETAILS-SH.1

EBASCO SERVICES INCORPORATED NEW YORK

SCALE 1/4"=1'-0"	APPROVED	DATE
DW. ELEC		2998-G-408
DR. P. SALVATORE		SH.1
CH. V. COX		

NO.	DATE	REVISION	BY	CHK.	APPROVED



INFORMATION REQUIRED TO COMPLETE THIS DWG

- (1) DEGASIFIER MOTOR OPERATED VALVES
- (2) RAD. MONITORING SYS