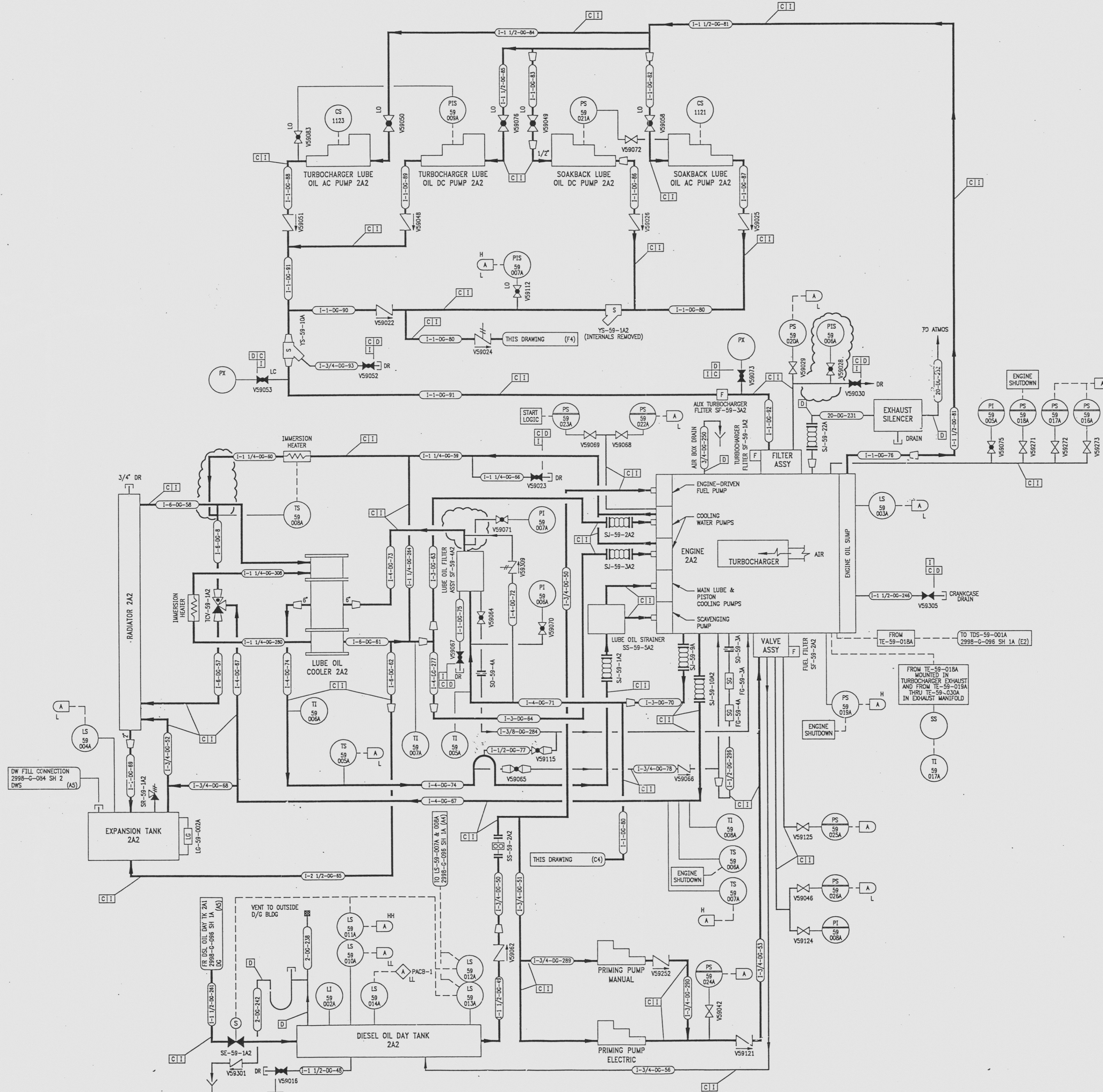


2998-G-096
SH 18

REVISIONS

NO	DATE	DESCRIPTION	BY	CH	APPROVED
7	7/24/95		DAC	PDB	JUZ
DCR-SLM-94-027 REDRAWN					
8	12/8/95		PAB	HS	TWS
FCM 075-295: REV. VS-59-1A2 TO SHOW INTERNALS REMOVED (C4)					
9	8/8/96		HUF	HS	JUZ
CRN 86037-6033; DEL: (F4) LO					
10	11/25/96		GM	GW	JUZ
CRN 86037-6400; REV: (02,04) BRANCH LINES (C5) VALVE LOCATION					



NOTE
LOCAL ALARMS ARE GROUPED ON A LOCAL PANEL.
THE LOCAL PANEL HAS AN ANNUNCIATOR IN THE
CONTROL ROOM ON RTG5 201.

REFERENCE DRAWINGS
PIPE, VALVE & INSTRUMENT SYMBOLS 2998-G-078 SH 100
VALVE LIST 2998-A-051
LINE LIST 2998-B-052
VALVE NUMBER OPERATIONAL NUMBER INDEX 2998-B-057A
INSTRUMENT INSTALLATION DETAILS 2998-B-231
INSTRUMENT LIST 2998-B-270C

NOTE:
THIS DRAWING IS MADE FROM REV. 8
OF DRAWING 2998-G-096 SH.1

REVISION OF THIS DRAWING MAY REQUIRE UPDATE OF
THE FOLLOWING DOCUMENT: FS&R FIGURE 9.5-7
**NUCLEAR SAFETY RELATED
IN PART ONLY**

FLORIDA POWER & LIGHT COMPANY
ST LUCIE PLANT
1983 - 890 Mw EXTENSION - UNIT 2
FLOW DIAGRAM
EMERGENCY DIESEL GENERATOR SYSTEM
DIESEL ENGINE 2A2

SCALE:	DATE:	APPROVAL:	DATE:
DR: MECH	2998-G-096		
CHK: P. BERGERSON	18		10

**INFORMATION
ONLY**
VERIFY WITH A CONTROLLED
COPY BEFORE USE.

DRAWING NUMBER
2998-G-096
SH 18

DRAWING NUMBER
2998-G-096
SH 18

DRAWING NUMBER
2998-G-096
SH 18

IBER

2998-G-096 SH.18