

2998-G-078  
SH 120

REVISIONS

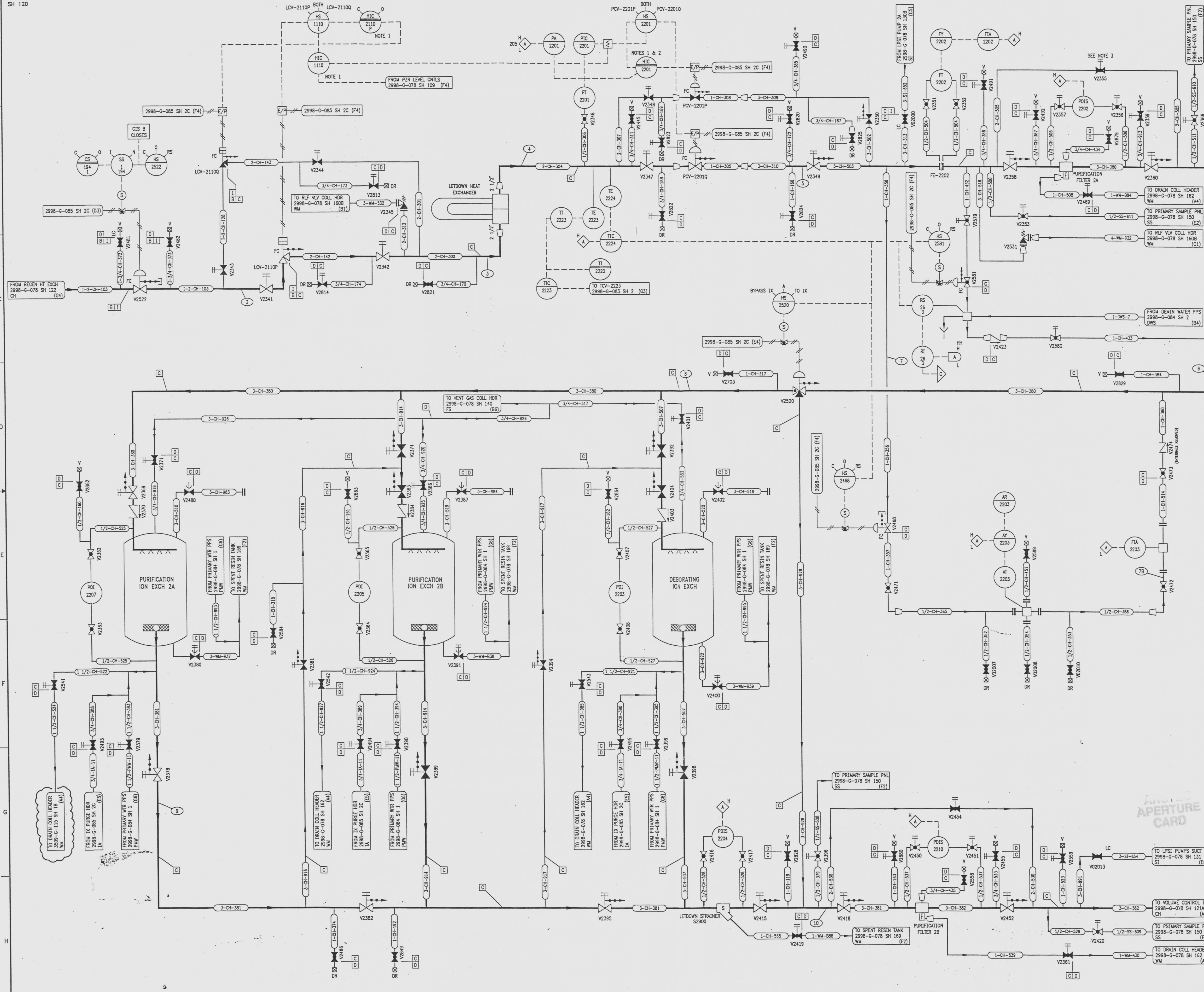
NO	DATE	DESCRIPTION	BY	CH	APPROVED
7	7/24/95	DCR-94-057: REDRAWN	RW	DWC	JJZ
8	1/8/96	PC/M 195-255: ADD:(D7) INTERNALS REMOVED FOR Y2474	PAB	HS	JJZ
9	10/4/96	GRN 96027-9036: ADD: (C1) VALVE MODE 'LC'	GW	HS	JRH
10	10/18/96	DCR 960223: ADDED: (C2,E6) STEM LEAKOFF CAP	HS	GW	JJZ
11	12/30/96	PC/M 96167: ADDED: (A7,E8) NOTE AND REFERENCE TO NOTE	GM	HS	DG
12	8/5/97	DCR 960223: REV: (G1) CONTINUATION	GM	K	JRH

DRAWING NUMBER  
2998-G-078  
SH 120

DRAWING NUMBER  
2998-G-078  
SH 120

DRAWING NUMBER  
2998-G-078  
SH 120

NUMBER



- NOTES
1. HAND INDICATING CONTROLLERS (HIC) HAVE SELECTOR FOR AUTOMATIC OR MANUAL CONTROL OF VALVE.
  2. HIC-2201 HAS LOCAL PRESSURE INDICATION.
  3. 2A LETDOWN PURIFICATION FILTER SHOWN IN SERVICE. THIS FILTER MAY BE PLACED IN SERVICE OR BYPASSED TO SUPPORT PLANT OPERATION.

- REFERENCE DRAWINGS:
- PIPE, VALVE & INSTRUMENT SYMBOLS 2998-G-078 SH 100
  - VALVE LIST 2998-G-081
  - LINE LIST 2998-G-052
  - VALVE OPERATIONAL NUMBER INDEX 2998-G-057A
  - INSTRUMENT INSTALLATION DETAILS 2998-G-211
  - INSTRUMENT LIST 2998-G-270C

INFORMATION  
VERIFY WITH A CONTROLLED  
COPY BEFORE USE.

NOTE:  
THIS DRAWING IS MADE FROM REV. 6  
OF DRAWING 2998-G-078 SH 120

REVISION OF THIS DRAWING MAY REQUIRE UPDATE OF  
THE FOLLOWING DOCUMENT: FSAR FIGURE 9.3-5

**NUCLEAR SAFETY RELATED  
IN PART ONLY**

FLORIDA POWER & LIGHT COMPANY  
ST LUCIE PLANT  
1983 - 890 MWe EXTENSION - UNIT 2  
FLOW DIAGRAM  
CHEMICAL AND VOLUME CONTROL  
SYSTEM

RAYTHEON ENGINEERS & CONSTRUCTORS, INC

SCALE:	NONE	DATE:	2998-G-078
DR: MECH		SHEET	12
DR: R. WIDMAN		SHEET	120
CH: CUNNINGHAM			

9712040016-02