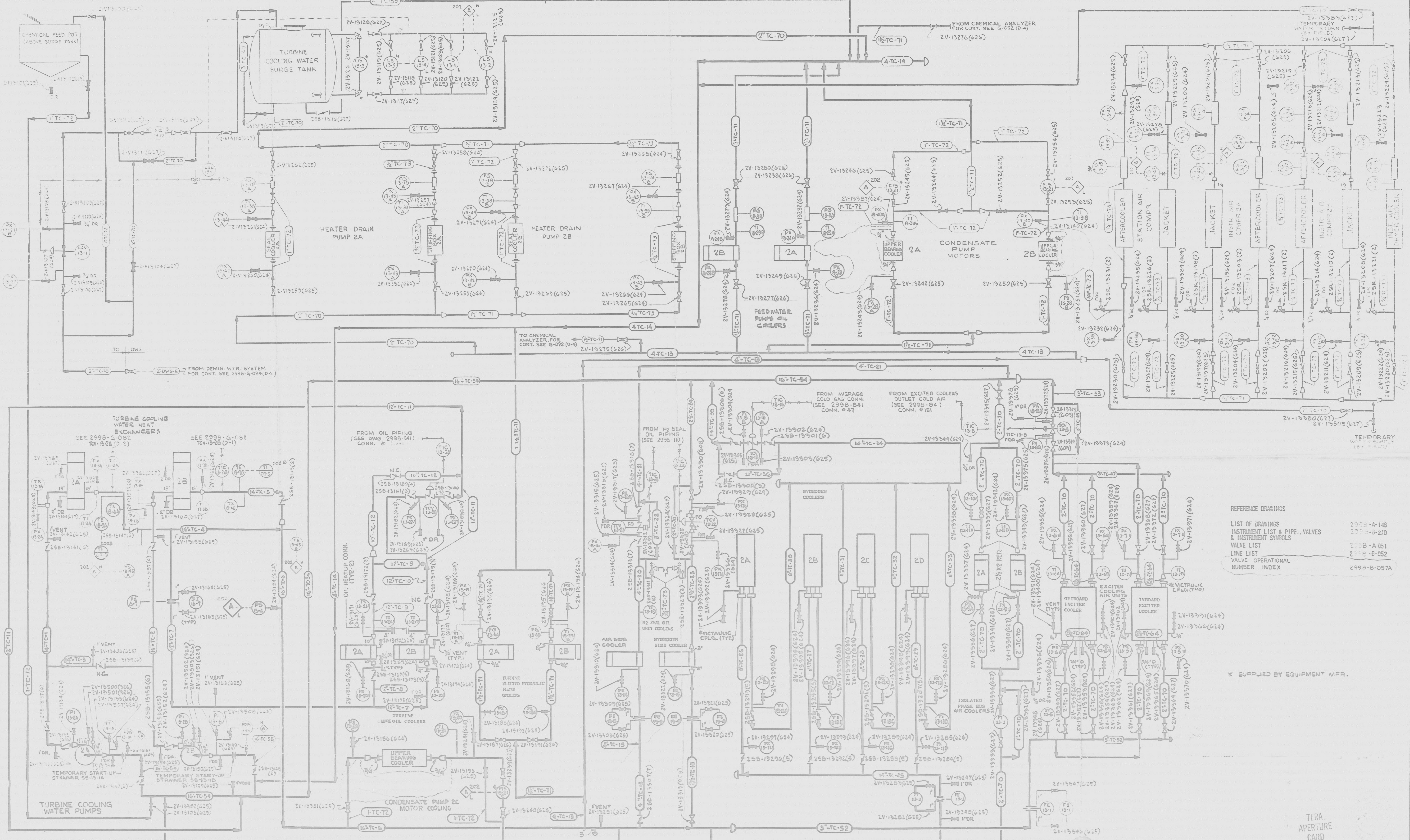


2998-G-089



REFERENCE DRAWINGS
 LIST OF DRAWINGS 2998-A-146
 INSTRUMENT LIST & PIPE, VALVES 2998-B-270
 & INSTRUMENT SYMBOLS 2998-C-051
 WIRE LIST 2998-D-051
 LINE LIST 2998-E-052
 VALVE OPERATIONAL NUMBER INDEX 2998-B-057A

* SUPPLIED BY EQUIPMENT MFR.

TERA APERTURE CARD

6	2/21/75	OPERATIONAL VALVE	J	J	UP	MM	
5	1/21/75	REVISED: (19) PIPING (14) INSTRUMENTS	J	SR	MM	MM	
4	1/21/75	REVISED: (19) INSTRUMENTS (14) PIPING	J	SR	MM	MM	
3	1/21/75	REVISED: (19) INSTRUMENTS (14) PIPING	J	SR	MM	MM	
2	1/21/75	REVISED: (19) INSTRUMENTS (14) PIPING	J	SR	MM	MM	
1	1/21/75	REVISED: (19) INSTRUMENTS (14) PIPING	J	SR	MM	MM	

THIS DOCUMENT IS THE PROPERTY OF EASCO SERVICE INCORPORATED. ITS USE IS EXPRESSLY RESTRICTED TO THE TERMS OF THE CONTRACT DATED AS OF 9-11-75 BETWEEN EASCO SERVICE INCORPORATED AND FLORIDA POWER & LIGHT COMPANY.

FLORIDA POWER & LIGHT COMPANY
 ST. LUCIE PLANT
 1993-2998(19) EXISTING UNIT NO. 2
 FLOW DIAGRAM
 TURBINE COOLING WATER SYSTEM

EASCO SERVICE INCORPORATED NEW YORK

SCALE: NONE
 APPROVED: [Signature]
 DATE: 2/21/75
 2998-G-089

Doc No: 50-380
 Cont No: 110000
 Date: 1/21/75
 PRELIMINARY DRAWING