

REGULATORY INFORMATION DISTRIBUTION SYSTEM (RIDS)

ACCESSION NBR: 8010080340 DOC. DATE: 80/10/03 NOTARIZED: NO
 FACIL: 50-389 St. Lucie Plant, Unit 2, Florida Power & Light Co.
 AUTH. NAME: AUTHOR AFFILIATION
 UHRIG, R.E. Florida Power & Light Co.
 RECIP. NAME: RECIPIENT AFFILIATION
 EISENHUT, D.G. Division of Licensing

DOCKET #
 05000389

MA/4

SUBJECT: Forwards list of critical review areas & description of methods/options for accelerated review of OL application. Draft SER w/open items list & NRC acceptance of Unit 2 as replicate of Unit 1 are among proposed methods.

DISTRIBUTION CODE: B001S COPIES RECEIVED: LTR 1 ENCL 1 SIZE: 9
 TITLE: PSAR/FSAR AMDTS and Related Correspondence

NOTES:

ACTION:	RECIPIENT	COPIES		RECIPIENT	COPIES	
	ID CODE/NAME	LTTR	ENCL		ID CODE/NAME	LTTR
ACTION:	A/D LICENSNG	1	0	YOUNGBLOOD, B	1	0
	RUSHBROOK, M.	1	0	BIRKEL, R. 04	1	1
INTERNAL:	ACCID EVALI BR26	1	1	AUX SYS BR 07	1	1
	CHEM ENG BR 08	1	1	CONT SYS BR. 09	1	1
	CORE PERF BR 10	1	1	EFF. TR SYS BR12	1	1
	EMERG PREP 22	1	0	EQUIP QUALI BR13	1	1
	GEOSCIENCES 14	1	1	HUM FACT ENG BR	1	1
	HYD/GEO BR 15	2	2	I&C SYS BR 16	1	1
	I&E 06	3	3	LIC GUID BR	1	1
	LIC QUALI BR	1	1	MATLI ENG BR 17	1	1
	MECH ENG BR 18	1	1	MPA	1	0
	NRC PDR 02	1	1	OELD	1	0
	OP LIC BR	1	1	POWER SYS BR 19	1	1
	PROC/TST REV 20	1	1	QA BR 21	1	1
	RAD ASSESS BR22	1	1	REAC SYS BR 23	1	1
	REG FILE 01	1	1	SIT ANAL BR 24	1	1
	STRUCT ENG BR25	1	1	SYS INTERAC BR	1	1
	EXTERNAL:	ACRS 27	16	16	LPDR 03	1
NSIC 05		1	1			

OCT 9 1980

TOTAL NUMBER OF COPIES REQUIRED: LTTR 55 ENCL 49

R

21



FLORIDA POWER & LIGHT COMPANY

October 3, 1980

L-80-333

Office of Nuclear Reactor Regulation
 Attention: Mr. Darrell G. Eisenhut, Director
 Division of Licensing
 U. S. Nuclear Regulatory Commission
 Washington, D. C. 20555

Dear Mr. Eisenhut:

Re: St. Lucie Unit 2
 Docket No. 50-389
Operating License Review

At our September 13, 1980 meeting with you in Bethesda, Maryland, it was apparent that an "innovative" design review approach will be necessary to complete the St. Lucie Unit 2 operating license review on a schedule consistent with Florida Power and Light's (FPL) St. Lucie Unit 2 construction schedule.

At the meeting FPL agreed to provide a list of "critical" review areas. That list is provided in Attachment 1. We request that you review this list for completeness and that you establish priorities for review of these areas based on your manpower availability.

FPL proposes the following as methods/options for an accelerated review of the St. Lucie Unit 2 operating license application.

- . Design review presentation for certain "critical" review areas.
- . Draft SER with open items list.
- . Accelerated Q1, Q2 with accelerated responses by applicant.
- . NRC acceptance/review of St. Lucie Unit 2 as a replicate of St. Lucie Unit 1. (Also, comparison of St. Lucie Unit 2 with a unit of similar design which the NRC is reviewing or has recently approved.)

Attachment 2 (taken from the September 18, 1980 FPL slide presentation) provides a more complete description of these methods/options. FPL is closely following the Palo Verde and Waterford-3 licensing reviews, and will adapt any lessons learned from these reviews (or others) to the St. Lucie Unit 2 review.

As part of the design review presentation option, and for other systems/ review areas where required, FPL will provide a lineup of the St. Lucie Unit 2 design against the current regulatory requirements (Standard Review Plans, Branch Technical Positions, Regulatory Guides, Standards, et al.) It was clear that this will be required for the St. Lucie Unit 2 review.

Boo!
 S
 111

8010080 340

H

PEOPLE .. SERVING PEOPLE

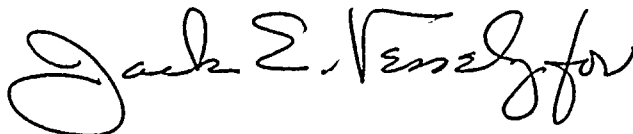
U. S. Nuclear Regulatory Commission
Division of Licensing

Page 2

We would like to meet with you or your staff again as soon as possible, preferably the week of October 13, 1980, to discuss the St. Lucie Unit 2 operating license review and to schedule the first of the design review presentations.

If you have any questions regarding this matter, please feel free to call.

Very truly yours,

A handwritten signature in dark ink, appearing to read "Jack E. Uhrig" with a stylized flourish at the end.

Robert E. Uhrig
Vice President
Advanced Systems & Technology

REU:TCG:cf

cc: Harold F. Reis

ATTACHMENT 1

"Critical" Review Areas

1. AC Power Systems
2. DC Power Systems
3. Auxiliary Feedwater System
4. Fire Protection
5. Environmental Qualification
6. Chapter 15 "Matrix" Approach
7. Loss of AC Power
8. Containment Cooling/Spray System

ATTACHMENT 2

DESIGN REVIEW PRESENTATION

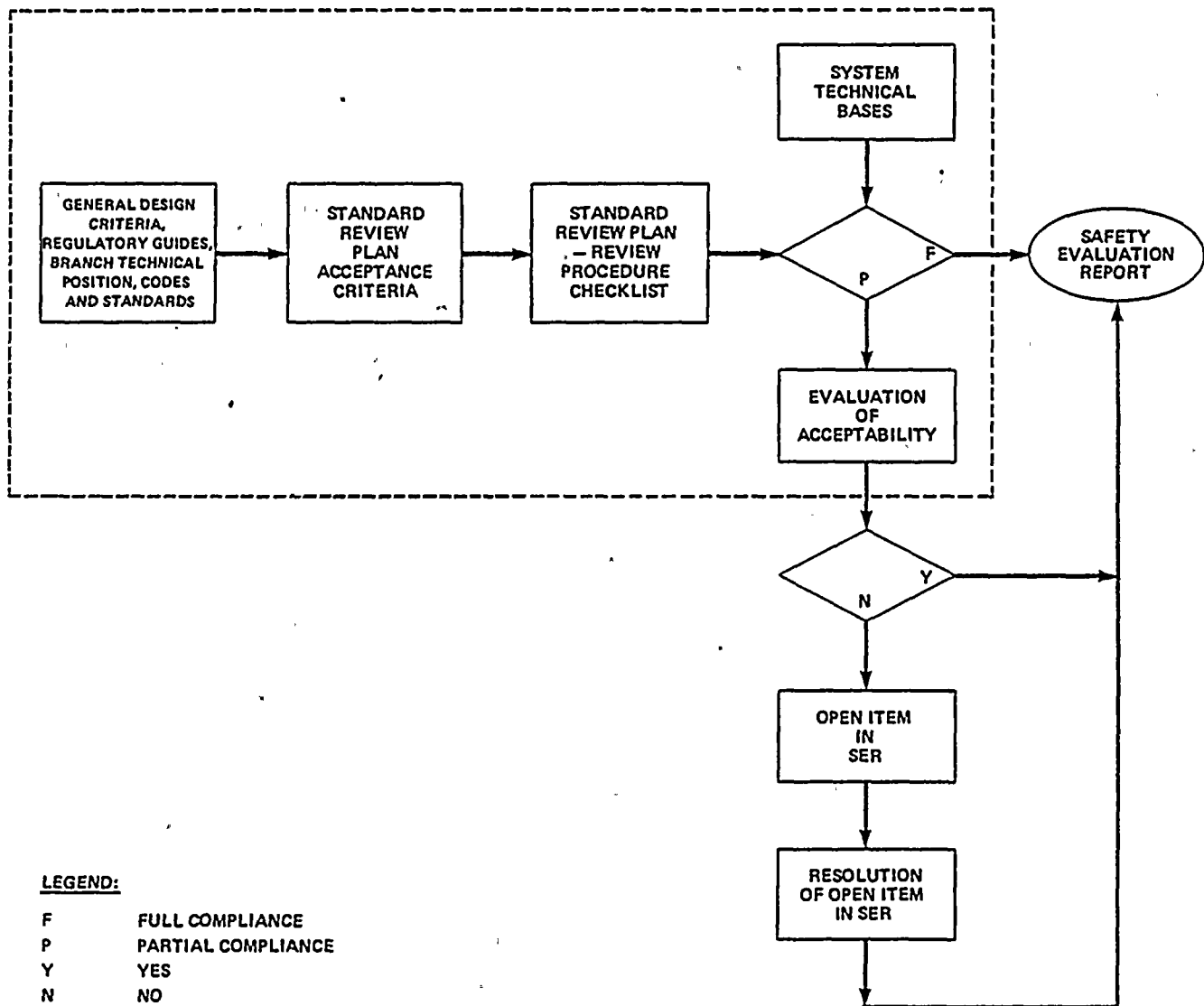
- REVIEW OF SYSTEM TECHNICAL BASES IN LIGHT OF STANDARD REVIEW PLAN, APPLICABLE REGULATORY GUIDES, BRANCH TECHNICAL POSITIONS, GENERAL DESIGN CRITERIA, STANDARDS, ETC.
- SYSTEM/LAYOUT & DESIGN BASES PRESENTATION TO FACILITATE DESIGN REVIEW
- ADVANCE COPY OF PRESENTATION TO NRC FOR REVIEW/COMMENT
- NRC COGNIZANT BRANCH PERSONNEL PRESENT AT ALL MEETINGS
- ALLOWS NRC TO WRITE SERS'

ADVANTAGES

- SHOULD ELIMINATE ROUND 1 AND 2 QUESTIONS
- ESTABLISHES DIRECT DIALOGUE BETWEEN NRC AND APPLICANT
- ASSIST REVIEWER IN UNDERSTANDING COMPLEX DESIGNS

SAMPLE OF THE TYPE OF REVIEW PROPOSED

1. LOGIC DIAGRAM OF PROPOSED REVIEW



DRAFT SER WITH OPEN ITEMS LIST

- MEB IS ACCOMPLISHING NOW ON WATERFORD-3
- SUBMIT DRAFT SER AND OPEN ITEMS LIST
- MEETING TO REVIEW/RESOLVE DRAFT SER AND OPEN ITEMS
- FINAL SER ISSUED
- OUTSTANDING ITEMS GOING TO ACRS

ADVANTAGES

- SHOULD ELIMINATE ROUND 1 AND 2 QUESTIONS
- ESTABLISHES DIRECT DIALOGUE BETWEEN NRC AND APPLICANT

**ACCELERATED
ROUND 1 AND 2
QUESTIONS/RESPONSES**

- BEING DONE ON
WATERFORD-3
PRESENTLY (AS OF 8/13/80)

ADVANTAGES

- SPEED UP THE REVIEW
PROCESS

REPLICATION BETWEEN ST. LUCIE UNITS 1 AND 2

- DESIGN IS A REPLICATION OF ST LUCIE UNIT 1
- FP&L WILL IDENTIFY DIFFERENCES BETWEEN UNIT 1 AND UNIT 2
- NRC WOULD AGREE TO REVIEW ONLY DIFFERENCES
- COULD LEND ITSELF TO ACCELERATED REVIEW AS OUTLINED ABOVE

ADVANTAGE

- REVIEW OF A DELTA DESIGN SHOULD ACCELERATE REVIEW